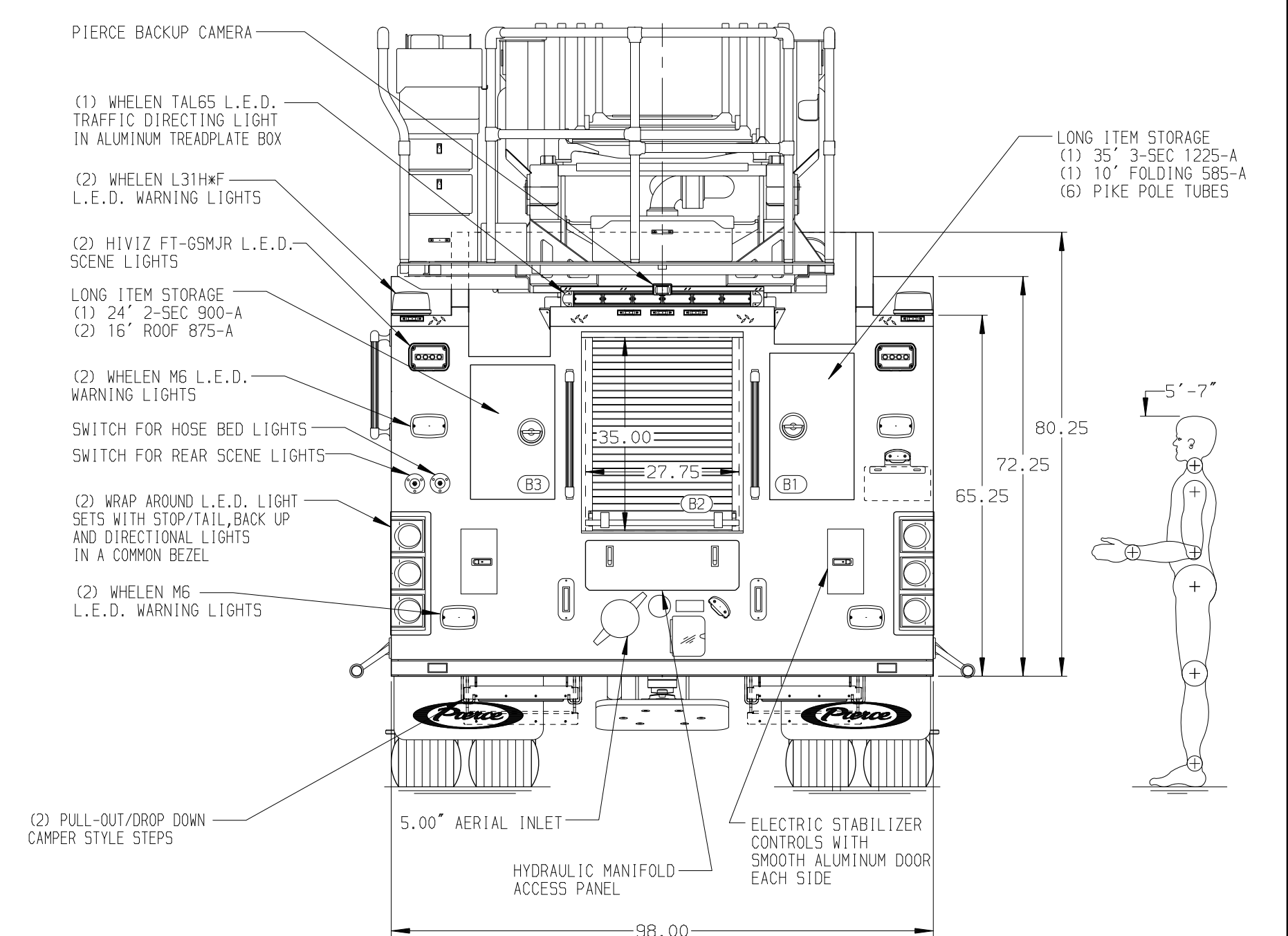
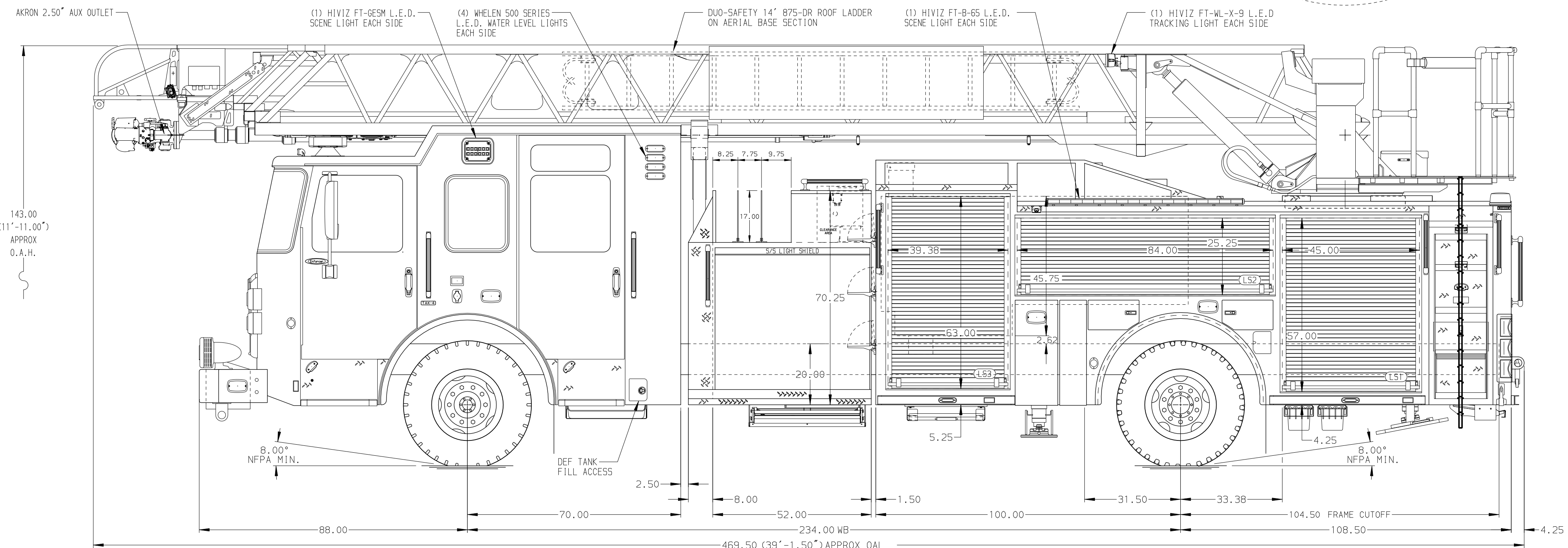


BODY	WATER TANK
107' ASL Aluminum Body	500 Gallon Poly Water Tank
COMPT, LEFT SIDE FRONT	Foam System
Full Height RollUp Forward	Husky 3 Single Agent Foam System
COMPT, LEFT SIDE REAR	Foam Cell
Full Height RollUp Rearward	20 Gallon Foam Cell, Non Reduced Water
COMPT, RIGHT SIDE FRONT	
Full Height RollUp Forward	
COMPT, RIGHT SIDE REAR	
Full Height RollUp Rearward	



CHASSIS	CAB	AXLE, FRONT, CUSTOM	TRANSMISSION	PUMPHOUSE	CROSSLAYS, 1.50"	SPEEDLAYS	SAFETY	Pierce MANUFACTURING INC.		JOB NO.
Enforcer Chassis	7010 Enforcer Notched Cab	22,800 Lb TAK-4 Axle	Allison 6th Gen, 4000 EV5 P	52" Control Zone Side Mount	(2) 1.50" Standard Capacity	Speedlays Not Required	Side Roll and Frontal Impact Protection	107' ASCENDANT AERIAL LADDER AND BODY ASSEMBLY		42594
ENGINE	BUMPER	AXLE, REAR		PUMP	CROSSLAYS, 2.50"	GENERATOR		MAKE	TITLE	DATE
510 HP Paccor MX13 Engine	19" Extended Painted Steel	33,500 Lb Meritor Axle		2000 GPM Waterous CSU	(1) 2.50" Standard Capacity	Generator Not Required		PIERCE	FOR	27APR24
NOTE								MODEL	DWG NO.	SHEET NO.
1. SHORELINE RECEPTACLE WITH KUSSMAUL SUPER AUTO-EJECT LOCATED ON DRIVER SIDE OF THE CAB 2. AIR INLET WITH DISCONNECT COUPLING LOCATED FORWARD IN THE DRIVER SIDE STEPWELL 3. BATTERY CHARGER LOCATED BEHIND DRIVERS SEAT 4. BATTERY CHARGE INDICATOR LOCATED ON DRIVERS SIDE OF THE CAB 5. ONE 1.50" OUTLET WITH 2.00" PIPING AND SWIVEL LOCATED IN CENTER BUMPER TRAY 6. SEVEN ADJUSTABLE SHELVES LOCATED IN COMPARTMENTS PER ORDER 7. TWO PAC TRAC MOUNTING SYSTEMS MOUNTED ON COMPARTMENT BACK WALLS LOCATED PER ORDER 8. MOUNTING PROVISIONS FOR FRONT INLET 9. TWO RECEPTACLES LOCATED PER ORDER 10. THREE RECEPTACLE STRIPS LOCATED PER ORDER 11. ONE SWING-OUT ALUMINUM TOOLBOARD LOCATED IN COMPARTMENT PER ORDER 12. ONE VERTICAL PARTITION LOCATED IN COMPARTMENT PER ORDER 13. RUNG LIGHTING ON AERIAL LADDER 14. NON-RAISED AERIAL PEDESTAL 15. 1500 GPM HIGH FLOW WATERWAY 16. LIMITED RETRACTION NOT REQUIRED								ENFORCER	42594AD	1 OF 1
								REV	DATE	BY