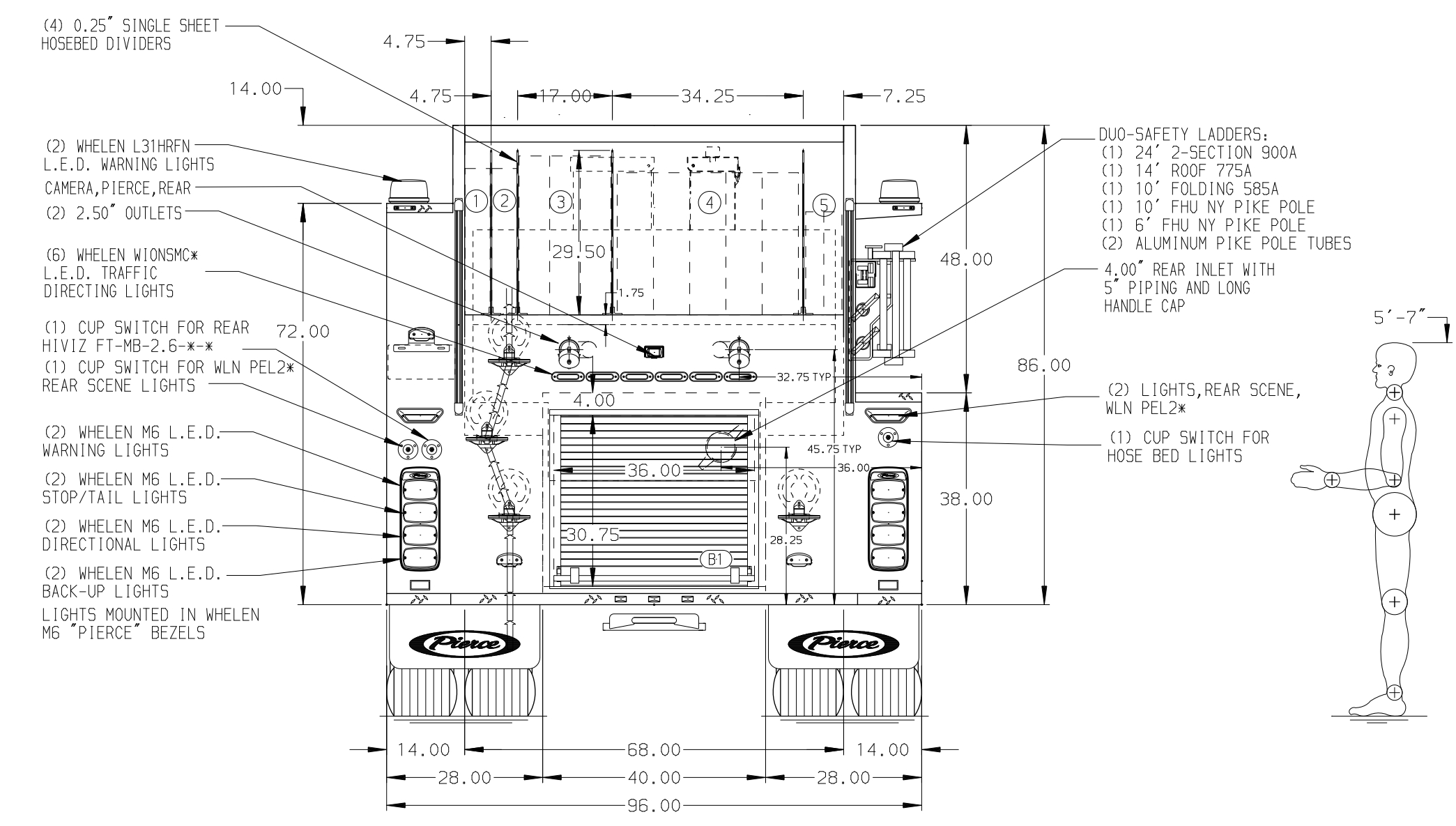
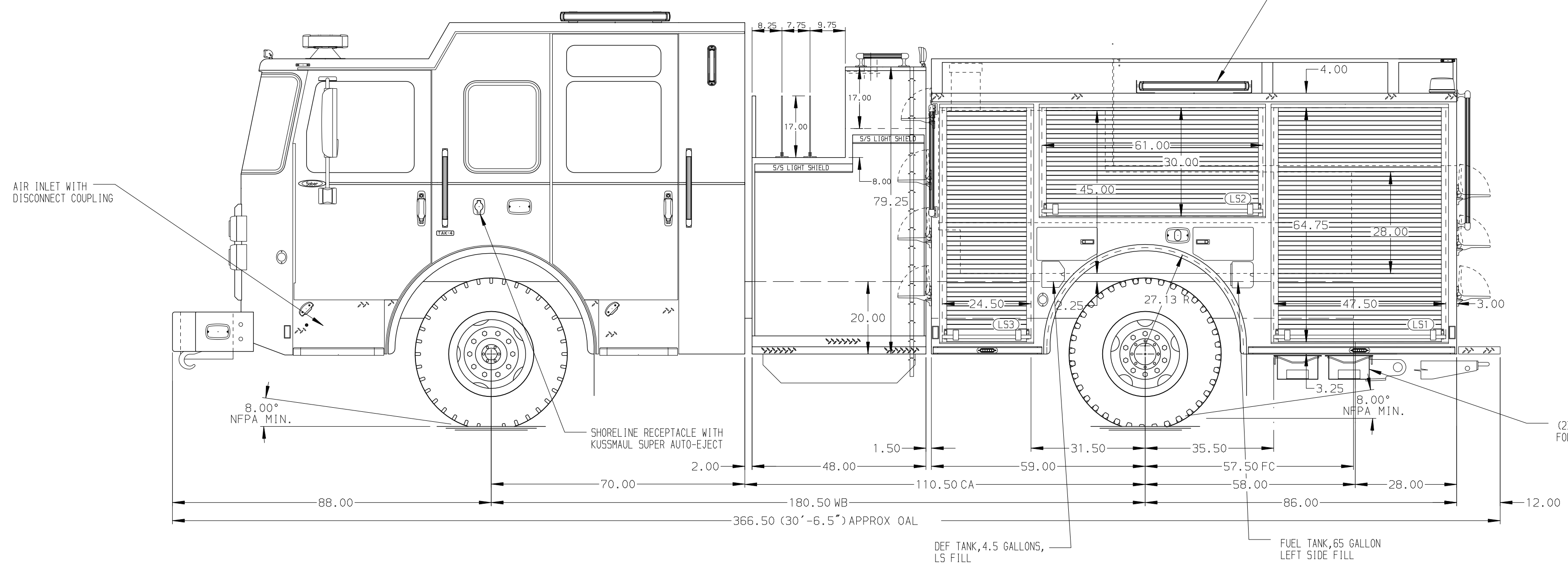


HOSEBED CAPACITIES

- ① 250' OF 2.50" D.J. HOSE
- ② 250' OF 2.50" D.J. HOSE
- ③ 800' OF 3.00" D.J. HOSE
- ④ 1200' OF 4.00" D.J. HOSE
- ⑤ 400' OF 1.75" D.J. HOSE



ALUMINUM BODY

SIDE ROLL AND FRONTAL IMPACT PROTECTION

NOTE
DIMENSIONS SHOWN ARE APPROXIMATE AND ARE SUBJECT TO MINOR DEVIATIONS AS MAY OCCUR OR BE NECESSARY IN CONSTRUCTION. MINOR DETAILS NOT SHOWN.

CHASSIS DATA	TITLE	1500-D-770P, 750 WATER W/20 FOAM, 145" BODY
MAKE	FOR	(3) CROSSLAYS, RS LADDER BRACKETS
PIERCE		PIERCE FIELD UNIT
MODEL		BRADENTON, FLORIDA
REV	DATE	BY
CH		
SABER FR	DWG NO.	42336AD

Pierce MANUFACTURING INC.

JOB NO. 42336

SCALE 1:24 DATE

DRAWN BY VHO 11APR24

CHECKED BY JAP 12APR24

SHEET SIZE D SHEET NO. 1 OF 1