

# PUMPER BODY

Long Aluminum 2nd Gen Pumper

## CHASSIS

Sober FR Chassis

## CHASSIS

AXLE, FRONT, CUSTOM  
DANA, D-2000F, 20,000 LB

AXLE, REAR  
27,000 Lb Dana Axle

## ENGINE

450 HP Cummins L9 Engine

## TRANSMISSION

Allison 6th Gen, 3000 EVS P

## BUMPER

19" Extended Steel Pointed

## CAB

7010 Sober FR Cab

## BODY

### WATER TANK

1000 Gallon New York Style Water Tank

COMPT, PUMPER, REAR  
23.50" FF RollUp Rear Compt

COMPT, PUMPER, LEFT SIDE  
171" RollUp Full Height & Depth, Front & Rear  
Cleaveland Notch 12"

COMPT, PUMPER, RIGHT SIDE  
171" RollUp Full Height & Depth, Front & Rear  
Cleaveland Notch 12"

## FIRE SUPPRESSION

### PUMPHOUSE

45" Control Zone Side Mount

### PUMP

1500 GPM Waterous CSU

CROSSLAYS, 1.50"  
(2) 1.50" Standard Capacity

CROSSLAYS, 2.50"  
2.50" Crosslay Not Required

### SPEEDLAYS

Speedlays Not Required

### GENERATOR

Generator Not Required

### Foam System

Husky 3 Single Agent Foam System

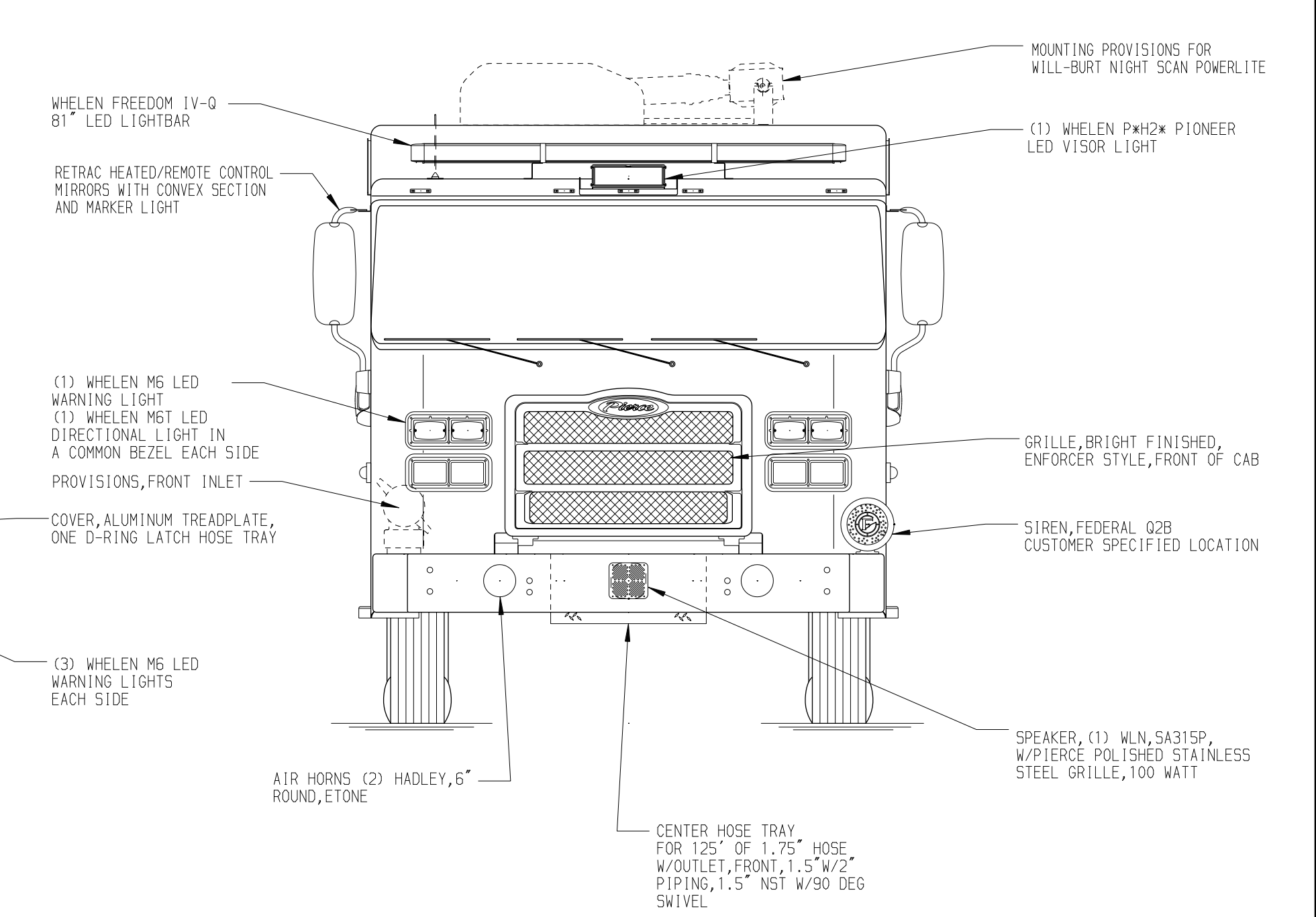
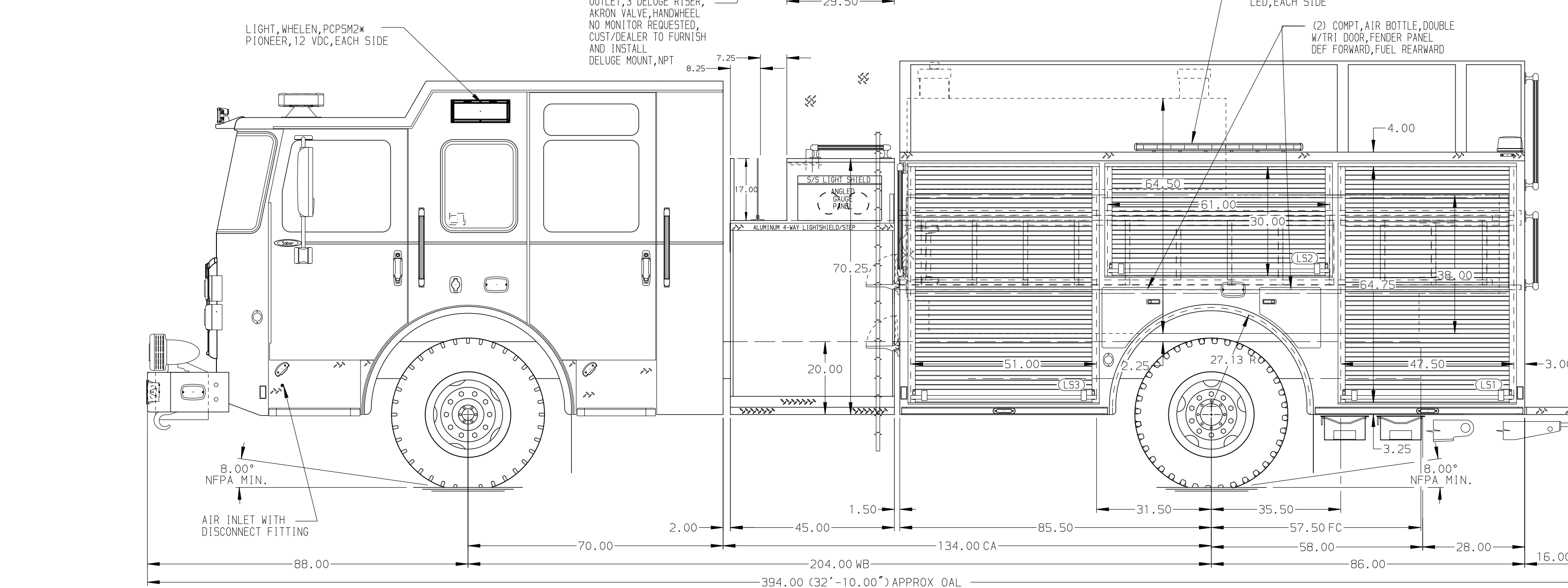
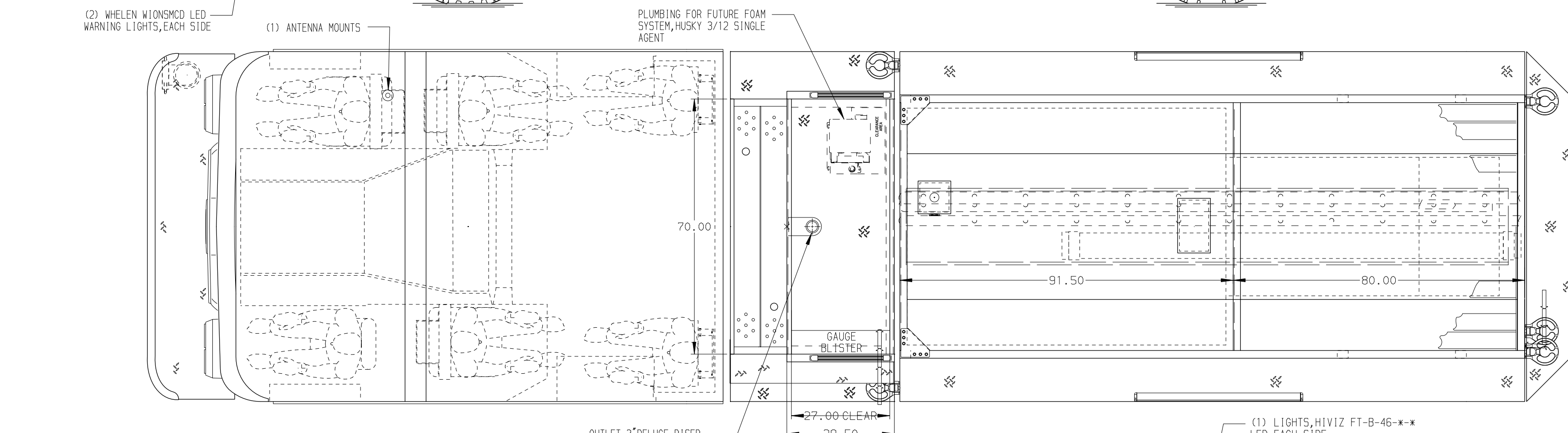
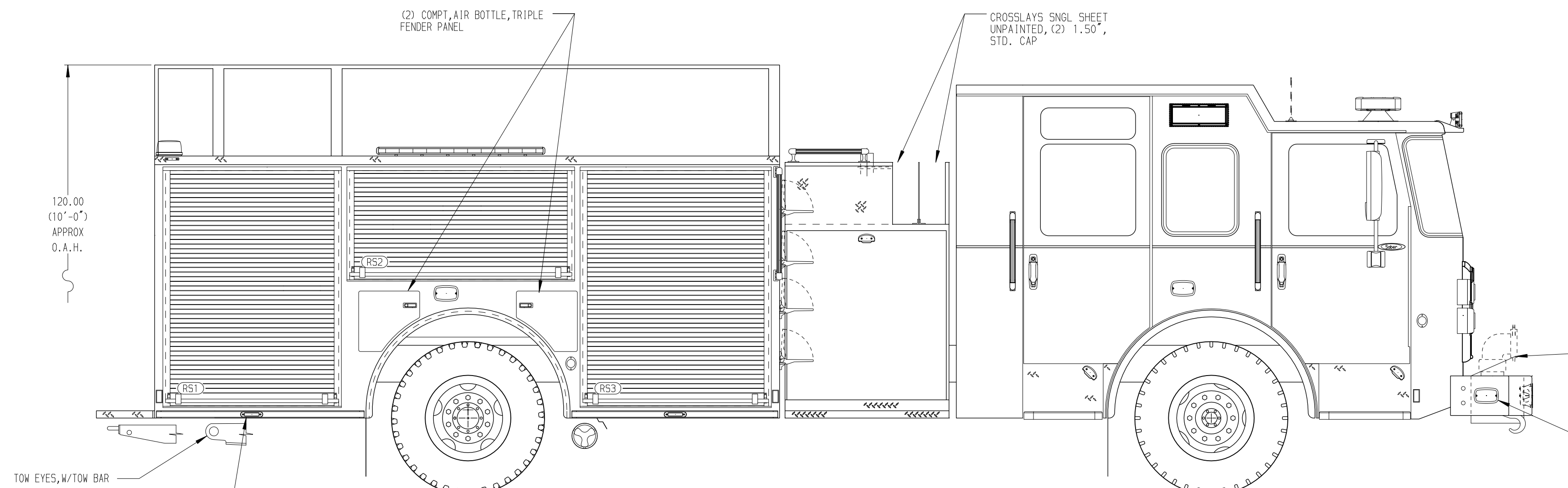
### Foam Cell

20 Gallon Foam Cell, Not Reduced Water

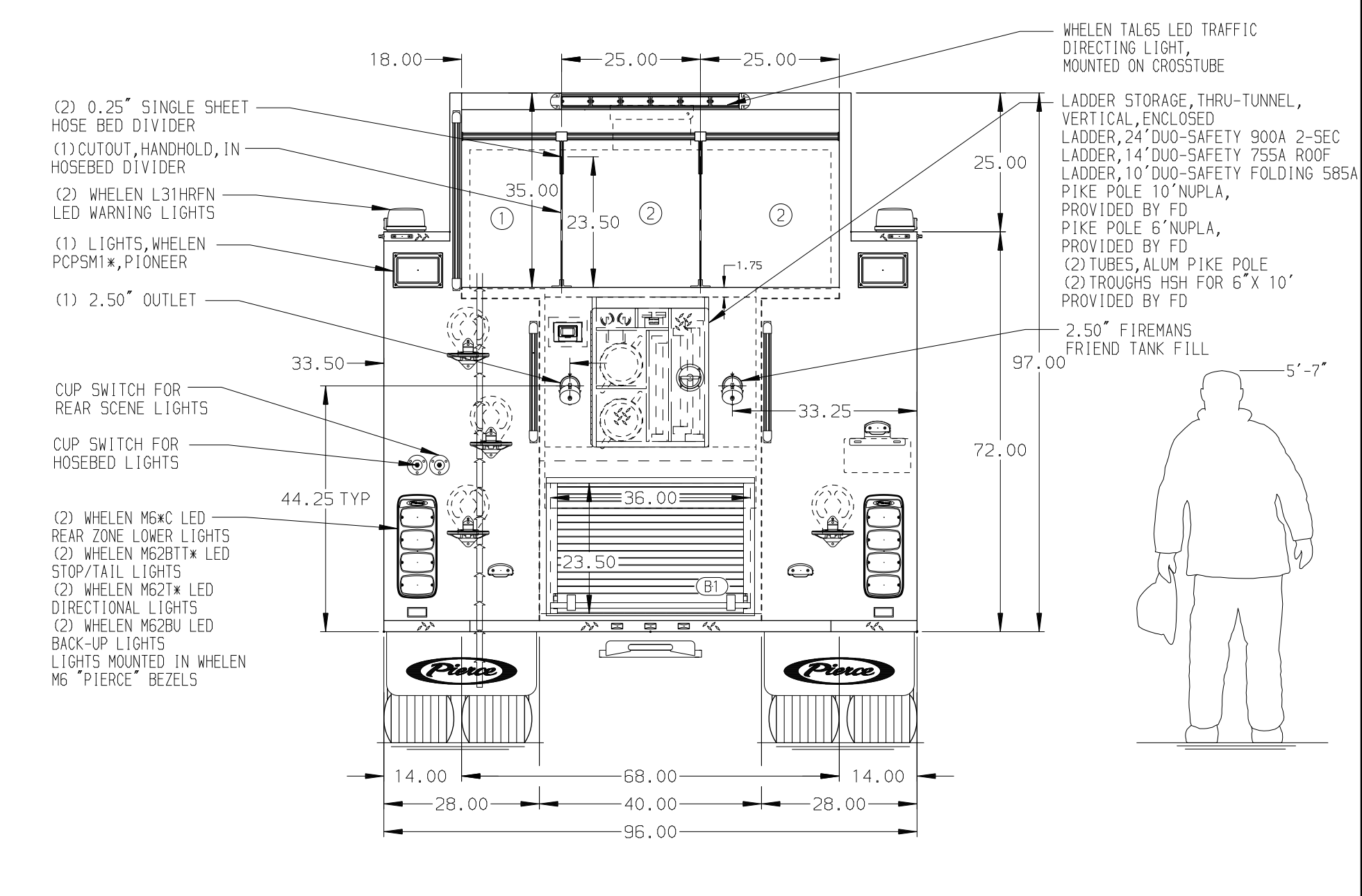
### NOTE

DIMENSIONS SHOWN ARE APPROXIMATE AND ARE SUBJECT TO MINOR DEVIATIONS AS MAY OCCUR OR BE NECESSARY IN CONSTRUCTION. MINOR DETAILS NOT SHOWN.

- ONE 1.50" OUTLET WITH 2.00" PIPING AND SWIVEL LOCATED IN CENTER BUMPER TRAY
- SHOULDER RECEPTACLE WITH KUSSMAUL SUPER AUTO-EJECT LOCATED ON DRIVER SIDE OF THE CAB
- AIR INLET WITH DISCONNECT COUPLING IN THE DRIVER SIDE STEPWELL
- BATTERY CHARGER LOCATED IN COMPARTMENT PER SHOP ORDER
- BATTERY CHARGE INDICATOR LOCATED ON THE DRIVER SIDE THROUGH WINDOW
- SIX ADJUSTABLE SHELVES IN COMPARTMENTS PER SHOP ORDER
- PLUMBING FOR FUTURE HUSKY FOAM SYSTEM



HOSEBED CAPACITY	
BED 1	400' OF 3.00" D.J. POLY HOSE
BED 2	1000' OF 5.00" D.J. POLY HOSE



		JOB NO.	42323
		SCALE	DATE
		1:24	
Pierce Pumper Approval Drawing		DRAWN BY	02FEB24
		RWR	
Pierce Field Unit		CHECKED BY	06FEB24
Bradenton, Florida		THS	
DWG NO.		SHEET SIZE	SHEET NO.
42323AD		D	1 OF 1

REV	DATE	BY	CH	SABER FR
26AUG24	RHU	JAP		
10MAY24	RWR	JAP		