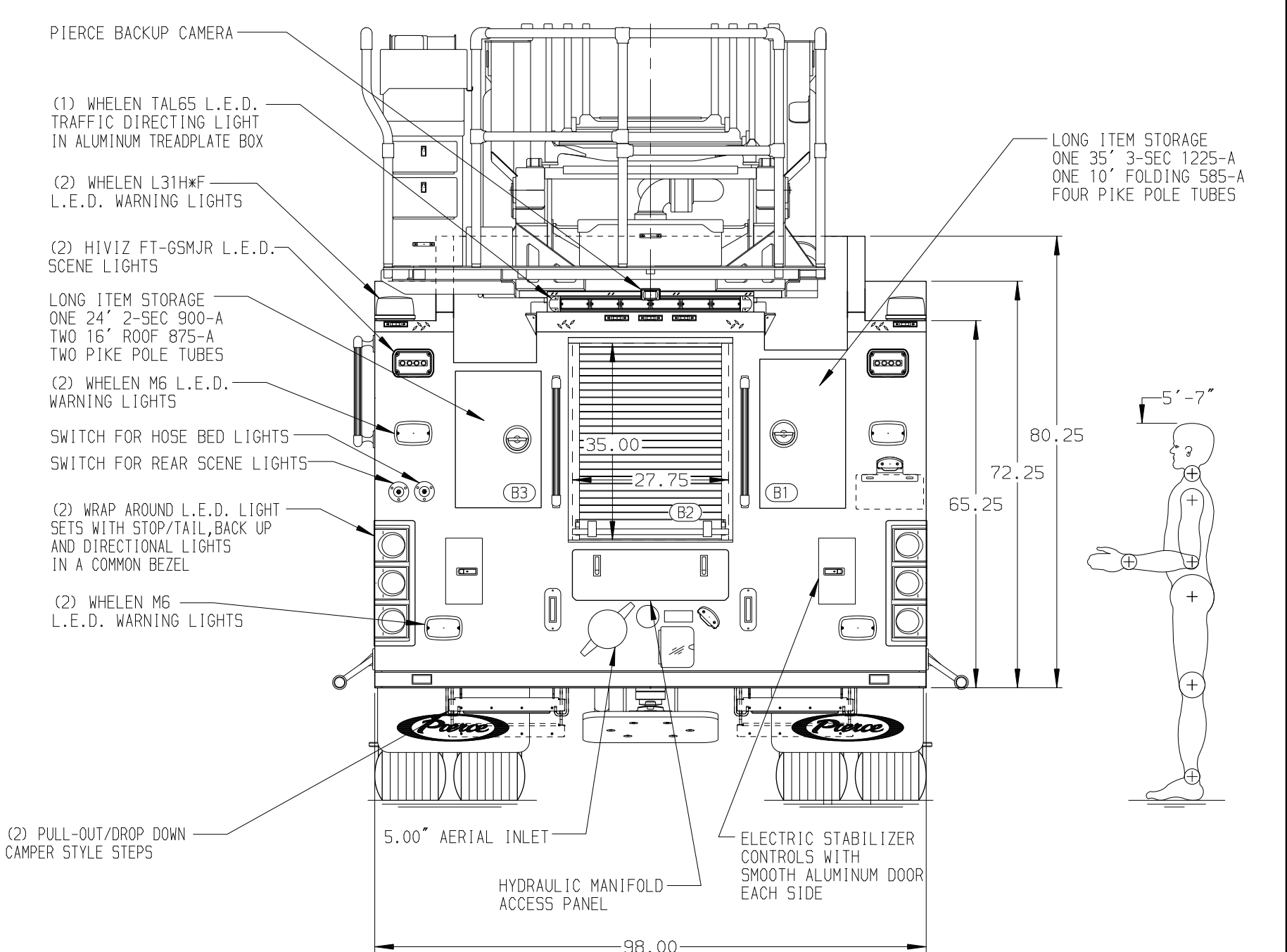
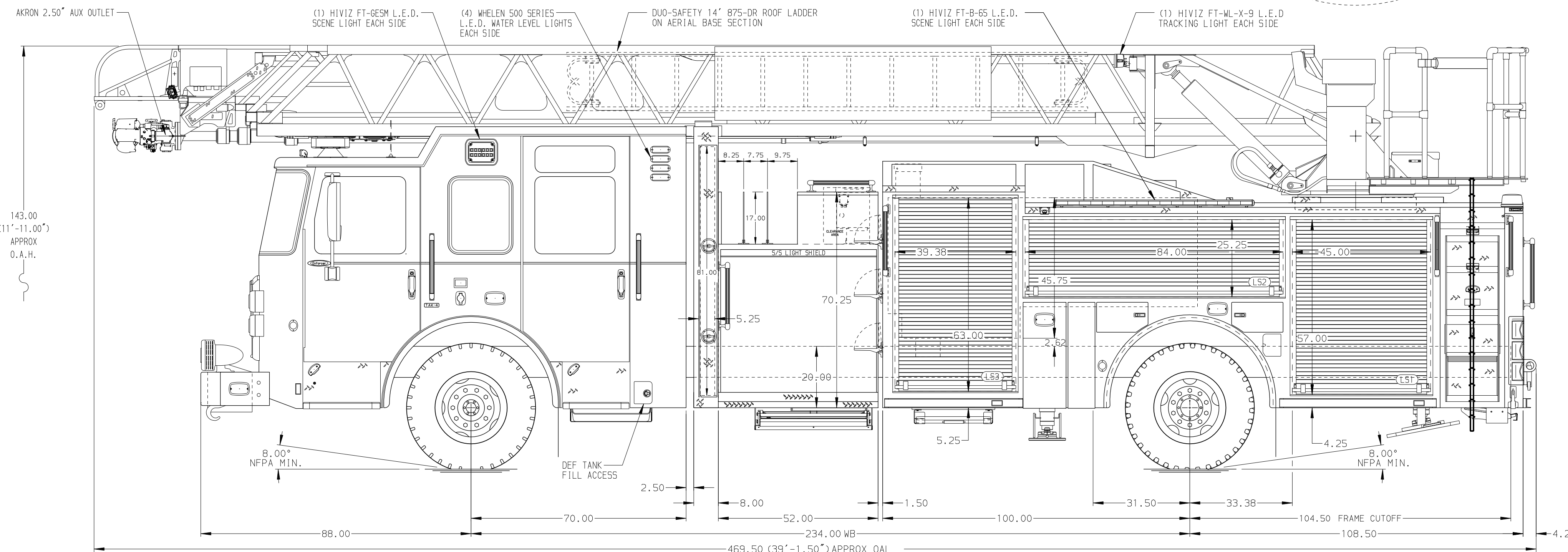


SURFACE DESIGNATION AND PATHWAY MARKINGS

BODY	WATER TANK
107' ASL Aluminum Body	500 Gallon Poly Water Tank
COMPT, LEFT SIDE FRONT	Foam System
Full Height RollUp Forward	Husky 3 Single Agent Foam System
COMPT, LEFT SIDE REAR	Foam Cell
Full Height RollUp Rearward	20 Gallon Foam Cell, Non Reduced Water
COMPT, RIGHT SIDE FRONT	
Full Height RollUp Forward	
COMPT, RIGHT SIDE REAR	
Full Height RollUp Rearward	



CHASSIS	CAB	AXLE, FRONT, CUSTOM	TRANSMISSION	PUMPHOUSE	CROSSLAYS, 1.50"	SPEEDLAYS	SAFETY	Pierce MANUFACTURING INC.		JOB NO.					
Enforcer Chassis	7010 Enforcer Notched Cab	22,800 Lb TAK-4 Axle	Allison 6th Gen, 4000 EV5 P	52" Control Zone Side Mount	(2) 1.50" Standard Capacity	Speedlays Not Required	Side Roll and			42248					
ENGINE	BUMPER	AXLE, REAR		PUMP	CROSSLAYS, 2.50"	GENERATOR	Frontal Impact Protection			SCALE	DATE				
510 HP Paccar MX13 Engine	19" Extended Painted Steel	33,500 Lb Meritor Axle		2000 GPM Waterous CSU	(1) 2.50" Standard Capacity	Generator Not Required		TITLE	107' ASCENDANT AERIAL LADDER AND BODY ASSEMBLY	DRAWN BY					
<b>NOTE</b> DIMENSIONS SHOWN ARE APPROXIMATE AND ARE SUBJECT TO MINOR DEVIATIONS AS MAY OCCUR OR BE NECESSARY IN CONSTRUCTION. MINOR DETAILS NOT SHOWN.								FOR	CITY OF TUPELO TUPELO, MS	CHECKED BY					
								DWG NO.	42248AD	AST	07FEB24				
1. SHORELINE RECEPTACLE WITH KUSSMAUL SUPER AUTO-EJECT LOCATED ON DRIVER SIDE OF THE CAB 2. AIR OUTLET WITH SHROFF VALVE LOCATED ON DRIVER SIDE PUMP PANEL 3. BATTERY CHARGER LOCATED BEHIND DRIVERS SEAT 4. BATTERY CHARGE INDICATOR LOCATED ON DRIVERS SIDE OF CAB 5. AIR INLET WITH DISCONNECT COUPLING LOCATED IN DRIVER SIDE STEP WELL 6. SIX ADJUSTABLE SHELVES LOCATED IN COMPARTMENTS PER ORDER 7. THREE FLOOR MOUNTED SLIDE-OUT TRAYS LOCATED IN COMPARTMENTS PER ORDER 8. RUNG LIGHTING ON AERIAL LADDER 9. ONE RECEPTACLE LOCATED IN COMPARTMENT PER ORDER 10. TWO RECEPTACLE STRIPS LOCATED IN COMPARTMENTS PER ORDER 11. ONE VERTICAL PARTITION LOCATED IN COMPARTMENT PER ORDER 12. ONE PEGBOARD MOUNTED ON COMPARTMENT BACK WALL LOCATED PER ORDER 13. DUAL L.E.D. LIGHT STRIPS LOCATED IN COMPARTMENTS PER ORDER 14. NON-RAISED AERIAL PEDESTAL 15. 1500 GPM HIGH FLOW WATERWAY 16. LIMITED RETRACTION NOT REQUIRED 17. ONE 1.50" OUTLET WITH 2.00" PIPING AND SWIVEL LOCATED IN CENTER BUMPER TRAY								REV	09JUL24	ANZ	AST	MAKE		SHEET SIZE	SHEET NO.
								ENFORCER	17APR24	ANZ	AST	PIERCE		D	1 OF 1