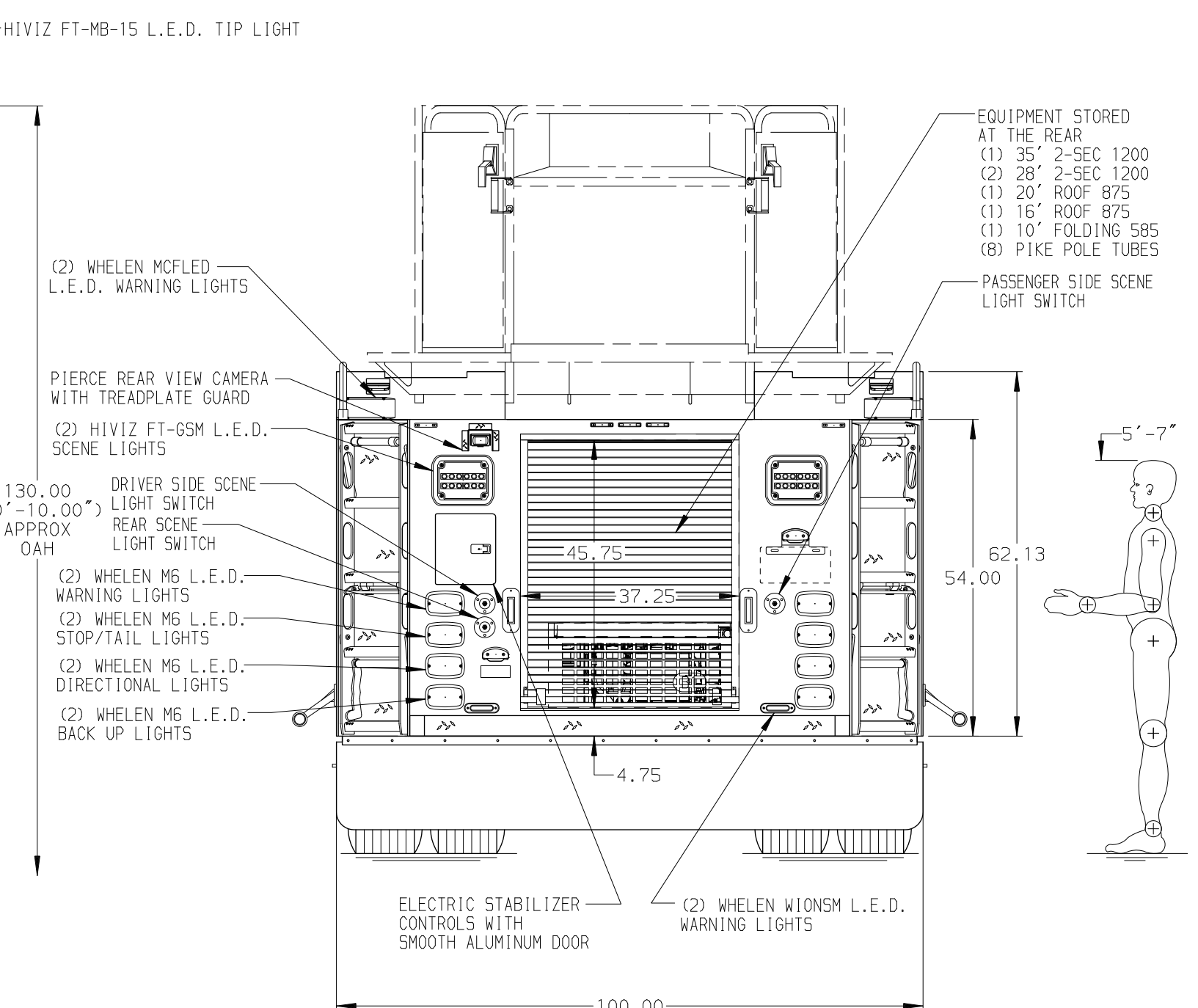
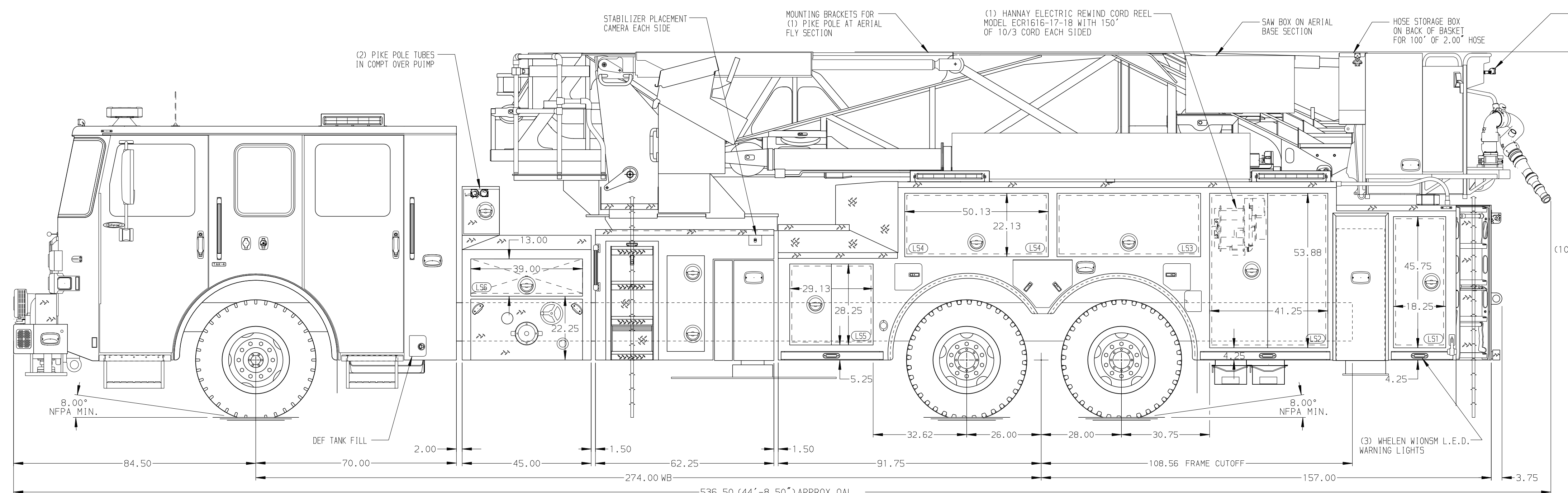


BODY
 100' Ascendant Aerial Tower No Pump Alum Body
COMPT, LEFT SIDE
 Full Height & Full Depth Lap Doors
COMPT, RIGHT SIDE
 Full Height & Full Depth Lap Doors



CHASSIS Enforcer Chassis ENGINE 510 HP Paccor MX13 Engine	CAB 7000 Enforcer Cab BUMPER 15" Painted Aluminum	AXLE, FRONT, CUSTOM 22,800 Lb TAK-4 Axle AXLE, REAR 52,000 Lb Meritor Axle	TRANSMISSION Allison 6th Gen, 4500 EVS P GENERATOR Generator Not Required	COMPARTMENT-NO PUMP 45" Compartment, No Pump, Lap Door	MAXIMUM O.A.H. = 130.00"	Pierce MANUFACTURING INC.	JOB NO. 42118 SCALE 1:24 DATE
NOTE DIMENSIONS SHOWN ARE APPROXIMATE AND ARE SUBJECT TO MINOR DEVIATIONS AS MAY OCCUR OR BE NECESSARY IN CONSTRUCTION. MINOR DETAILS NOT SHOWN.						TITLE 100' ASCENDANT AERIAL TOWER AND BODY ASSEMBLY NO PUMP, NO TANK FOR BOROUGH OF GLEN ROCK GLEN ROCK, NJ DWG NO. 42118AD	DRAWN BY ANZ 18DEC23 CHECKED BY NAK 20DEC23 SHEET SIZE D SHEET NO. 1 OF 1
1. SHORELINE RECEPTACLE WITH KUSSMAUL SUPER AUTO-EJECT LOCATED ON DRIVER SIDE OF THE CAB 2. AIR INLET WITH KUSSMAUL AIR EJECT & WEATHERPROOF COVER LOCATED ON DRIVER SIDE OF THE CAB 3. BATTERY CHARGER LOCATED PER BEHIND DRIVER SEAT 4. BATTERY CHARGE INDICATOR LOCATED ON DRIVER SEAT WITH BRACKET 5. SEVEN ADJUSTABLE SHELVES LOCATED IN COMPARTMENTS PER ORDER 6. DUAL LIGHT STRIPS LOCATED IN COMPARTMENTS PER ORDER 7. TWO TILT/SLIDE-OUT TRAYS LOCATED IN COMPARTMENTS PER ORDER 8. TWO FLOOR MOUNTED SLIDE-OUT TRAYS LOCATED IN COMPARTMENTS PER ORDER 9. TWO ALUMINUM SLIDE-OUT TOOLBOARDS LOCATED IN COMPARTMENTS PER ORDER 10. FOUR BACK-WALL MOUNTED PEGBOARDS LOCATED IN COMPARTMENTS PER ORDER 11. TURTLE TILE MATTING ON COMPARTMENT SHELVES & FLOORS PER ORDER 12. HARRISON B&W M106.0 GENERATOR IN B1 COMPARTMENT 13. ONE CIRCUIT BREAKER LOCATED IN COMPARTMENT PER ORDER 14. FOUR RECEPTACLES LOCATED PER ORDER 15. TECNIO RUNG LIGHTING AT AERIAL DEVICE 16. NON-RAISED AERIAL PEDESTAL 17. 3-IN-1 LYFCOMBO BRACKETS AT AERIAL BASKET 18. DC POWER TO AERIAL TIP 19. FOUR HIWIZ FT-MB-16-TR L.E.D. LIGHTS UNDER BASKET SIDE & CORNER STEPS 20. FIRE RESEARCH 2-WAY INTERCOM 21. ONE LITTLE GIANT VELOCITY MODEL 13, 15413-001 SHIPPED LOOSE						CHASSIS DATA MAKE PIERCE MODEL ENFORCER	REV 22APR24 ANZ AST 07MAR24 ANZ AST