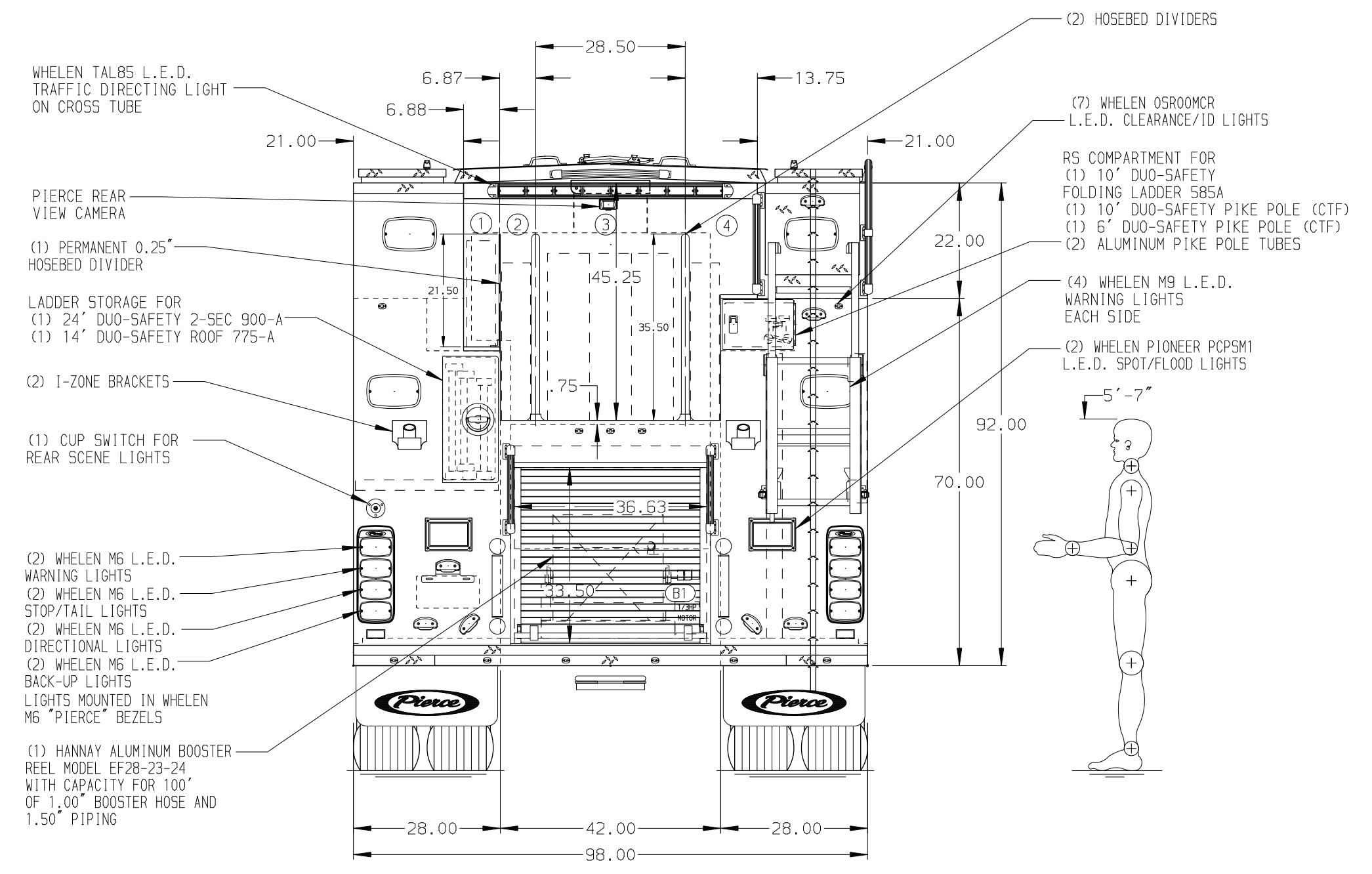
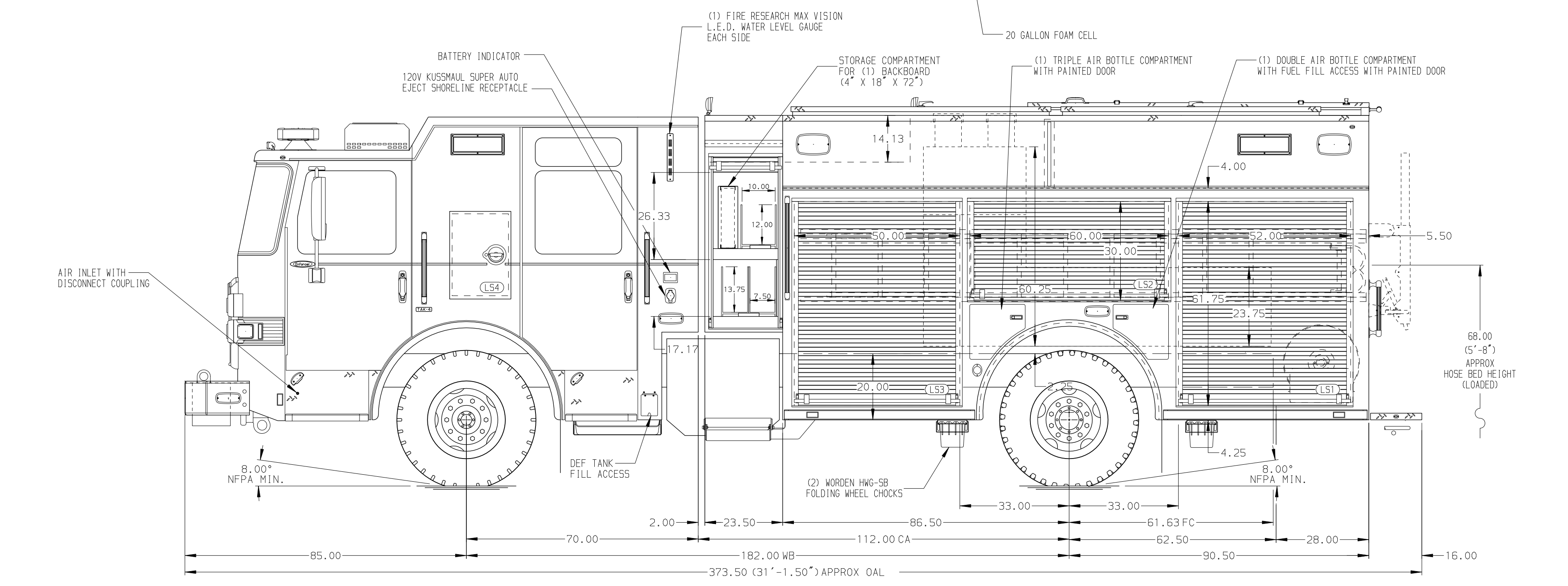


- HOSEBED CAPACITIES
- ① 200' OF 3.00" D.J. HOSE
  - ② 300' OF 3.00" D.J. HOSE
  - ③ 1000' OF 5.00" D.J. HOSE
  - ④ 300' OF 3.00" D.J. HOSE



ALUMINUM BODY

SIDE ROLL AND FRONTAL IMPACT PROTECTION

NOTE  
DIMENSIONS SHOWN ARE APPROXIMATE AND ARE SUBJECT TO MINOR DEVIATIONS AS MAY OCCUR OR BE NECESSARY IN CONSTRUCTION. MINOR DETAILS NOT SHOWN.

- 1. BATTERY CHARGER LOCATED BEHIND THE DRIVER'S SEAT
- 2. DUAL L.E.D. LIGHT STRIPS LOCATED IN HOSE BED

REV	DATE	BY	CH	ENFORCER
23JAN25	BTH	AST		CHASSIS DATA
20DEC24	BTH	AST		MAKE
05AUG24	BTH	AST		PIERCE
01MAY24	BTH	AST		MODEL
01MAY24	BTH	SJS		

	<b>MANUFACTURING INC.</b>		JOB NO.	42095
			SCALE	DATE
TITLE	2000GPM, 520G TANK, 500G WATER, 20G FOAM		DRAWN BY	BTH
	177" PUMPER PUC, MUX		CHECKED BY	SJS
FOR	PIERCE FIELD UNIT		SHEET SIZE	D
	APPLETON, WISCONSIN		SHEET NO.	1 OF 1
DWG NO.	42095AD			