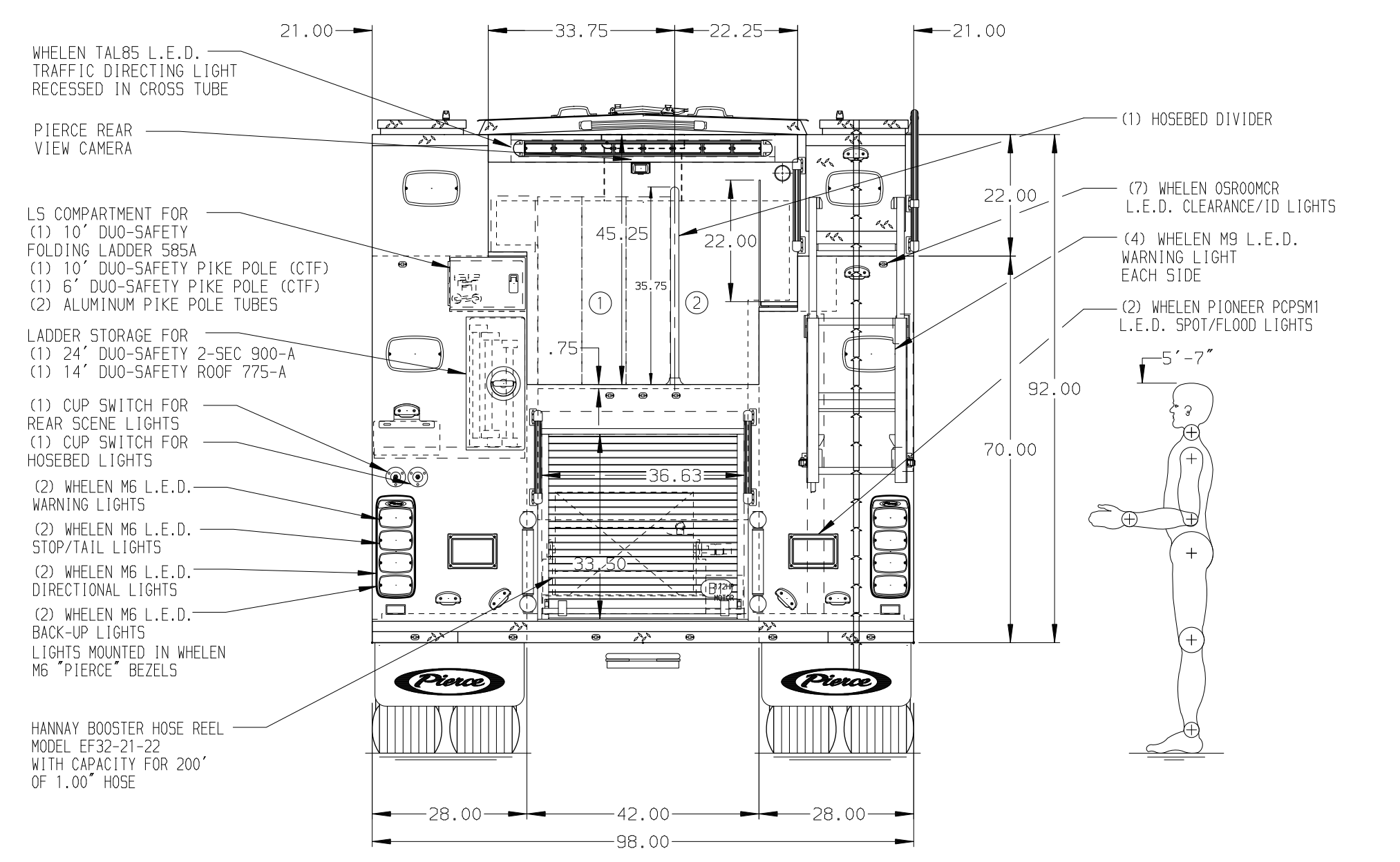
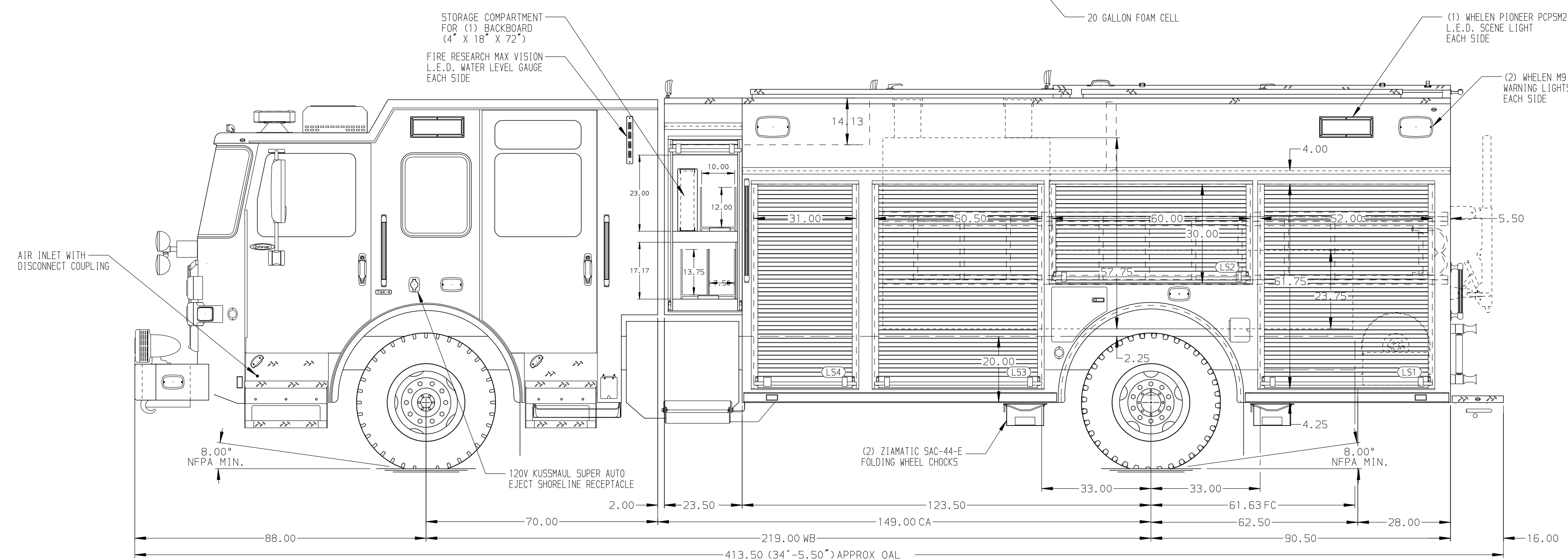


- HOSEBED CAPACITIES**
- ① 1000' OF 5.00" D.J. HOSE
 - ② 400' OF 3.00" D.J. HOSE
 - ③ 250' OF 2.50" D.J. HOSE



ALUMINUM BODY

NOTE
DIMENSIONS SHOWN ARE APPROXIMATE AND ARE SUBJECT TO MINOR DEVIATIONS AS MAY OCCUR OR BE NECESSARY IN CONSTRUCTION. MINOR DETAILS NOT SHOWN.

1. BATTERY CHARGER LOCATED BEHIND THE DRIVER'S SEAT
2. BATTERY CHARGER INDICATOR LOCATED ON DRIVER'S SEAT RISER
3. DUAL L.E.D. LIGHT STRIPS LOCATED IN HOSE BED
4. FIVE FULL WIDTH/DEPTH ADJUSTABLE SHELVES LOCATED PER ORDER
5. TWO FLOOR MOUNTED SLIDE-OUT TRAYS WITH SLIDE SIDES LOCATED PER ORDER
6. TWO SWING-OUT ALUMINUM TOOL BOARDS LOCATED PER ORDER
7. PARTITION BETWEEN L51/B1 AND R51/B1
8. ONE VERTICAL PARTITION LOCATED PER SHOP ORDER

CUSTOMER APPROVAL				Pierce MANUFACTURING INC.		JOB NO.	41857
APPROVED BY: _____						SCALE	DATE
DATE: _____						1:24	
CHASSIS DATA				TITLE	2000-D-750P, 730 WATER W/20 FOAM, 214" PUC RESCUE		
MAKE				FOR	(3) CROSSLAYS, HUSKY 3, LADDERS THRU BODY		
PIERCE				FOR	Anna Fire Department Anna, Texas		
MODEL				DWG NO.	41857AD		
REV	DATE	BY	CH	ENFORCER			
25JUN24	MMF	AST			CHECKED BY	MMF 11APR24	
31MAY24	MMF	AST			SHEET SIZE	D 1 OF 1	