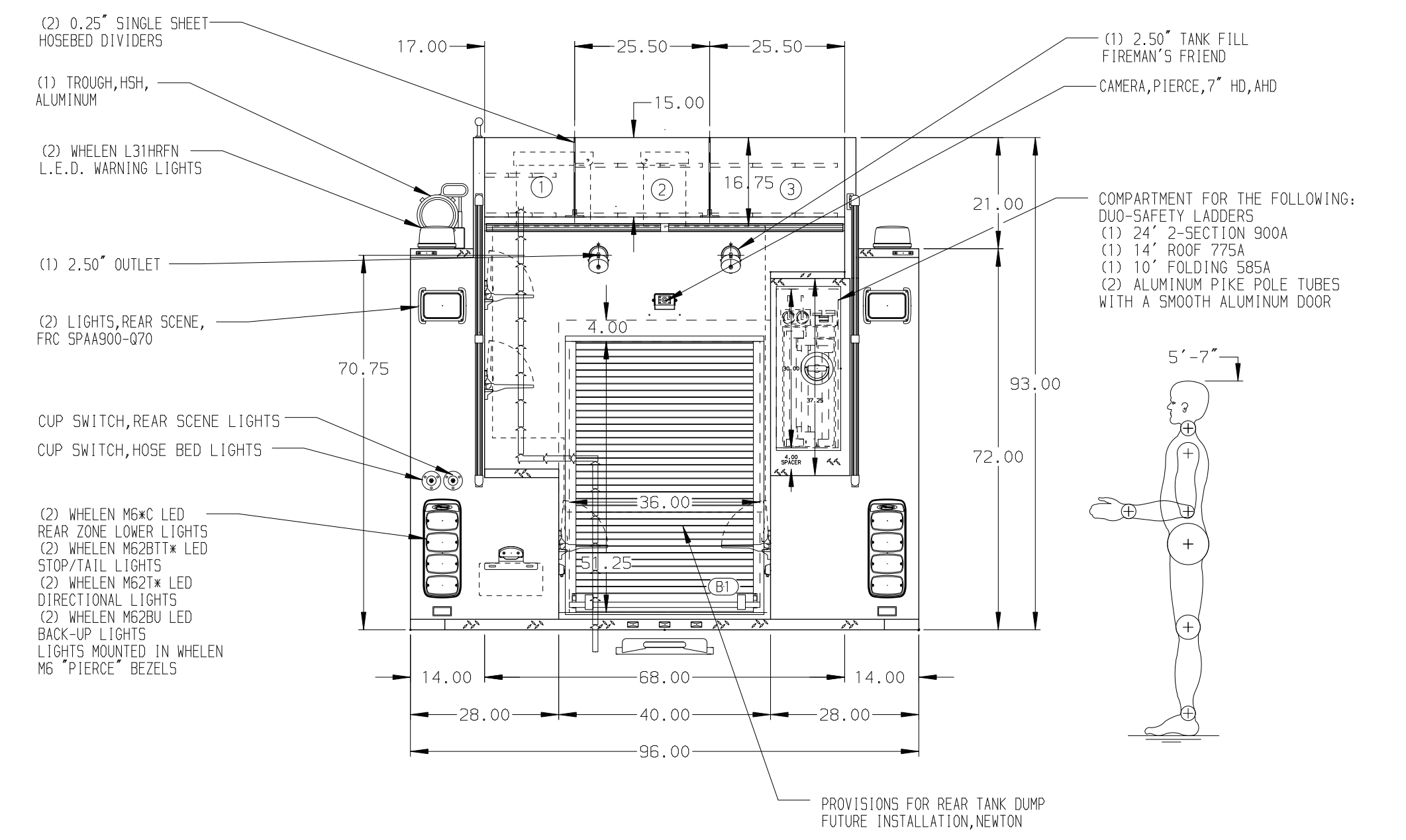
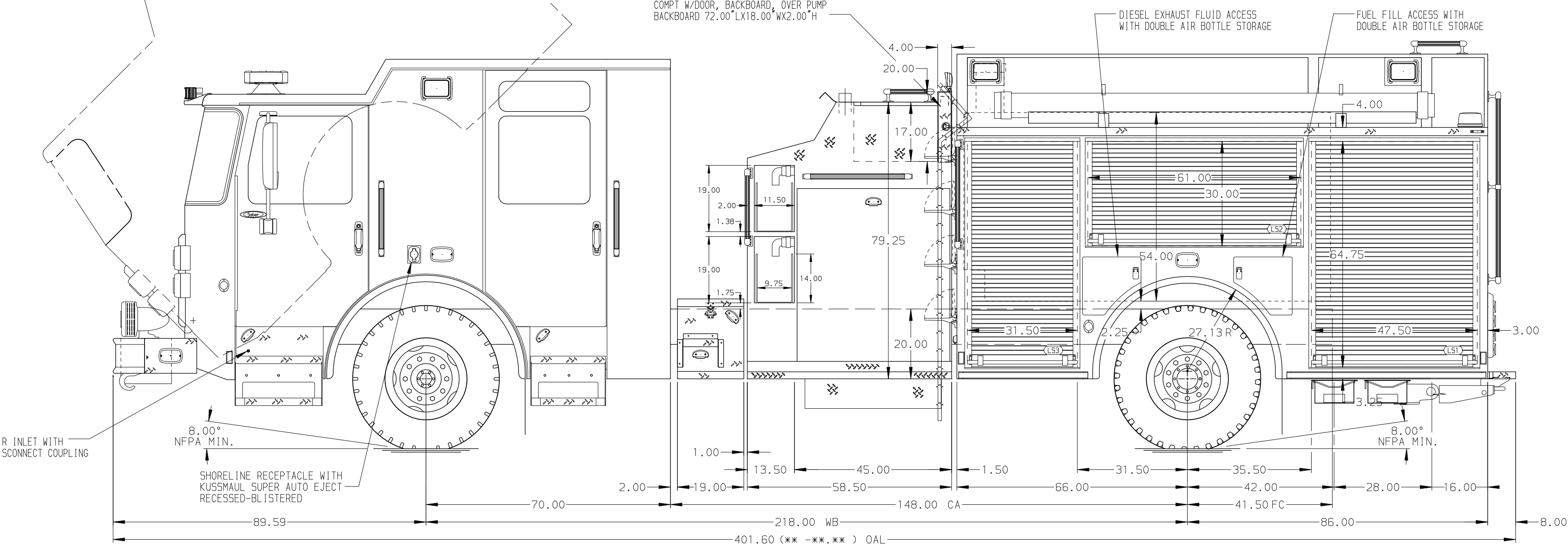


- HOSEBED CAPACITIES**
- ① 400' OF 2.50" D.J. HOSE
 - ② 500' OF 5.00" D.J. HOSE
 - ③ 500' OF 5.00" D.J. HOSE



ALUMINUM BODY

NOTE
DIMENSIONS SHOWN ARE APPROXIMATE AND ARE SUBJECT TO MINOR DEVIATIONS AS MAY OCCUR OR BE NECESSARY IN CONSTRUCTION. MINOR DETAILS NOT SHOWN.

		JOB NO.	41761
		SCALE	DATE
1500-D-1000P, 980WATER, 20 FOAM 152" PUMPER BODY, TOP CONTROL, LADDERS BESIDE TANK		DRAWN BY	VHO
		CHECKED BY	JAP
41761AD		SHEET SIZE	SHEET NO.
		DWG NO.	D

REV	DATE	BY	CH	SABER FR
11JUN24	VHO	CAG	MAKE	CHASSIS DATA
20JUN24	VHO	CAG	PIERCE	FOR
14MAY24	RWR	JAP	MODEL	DWG NO.