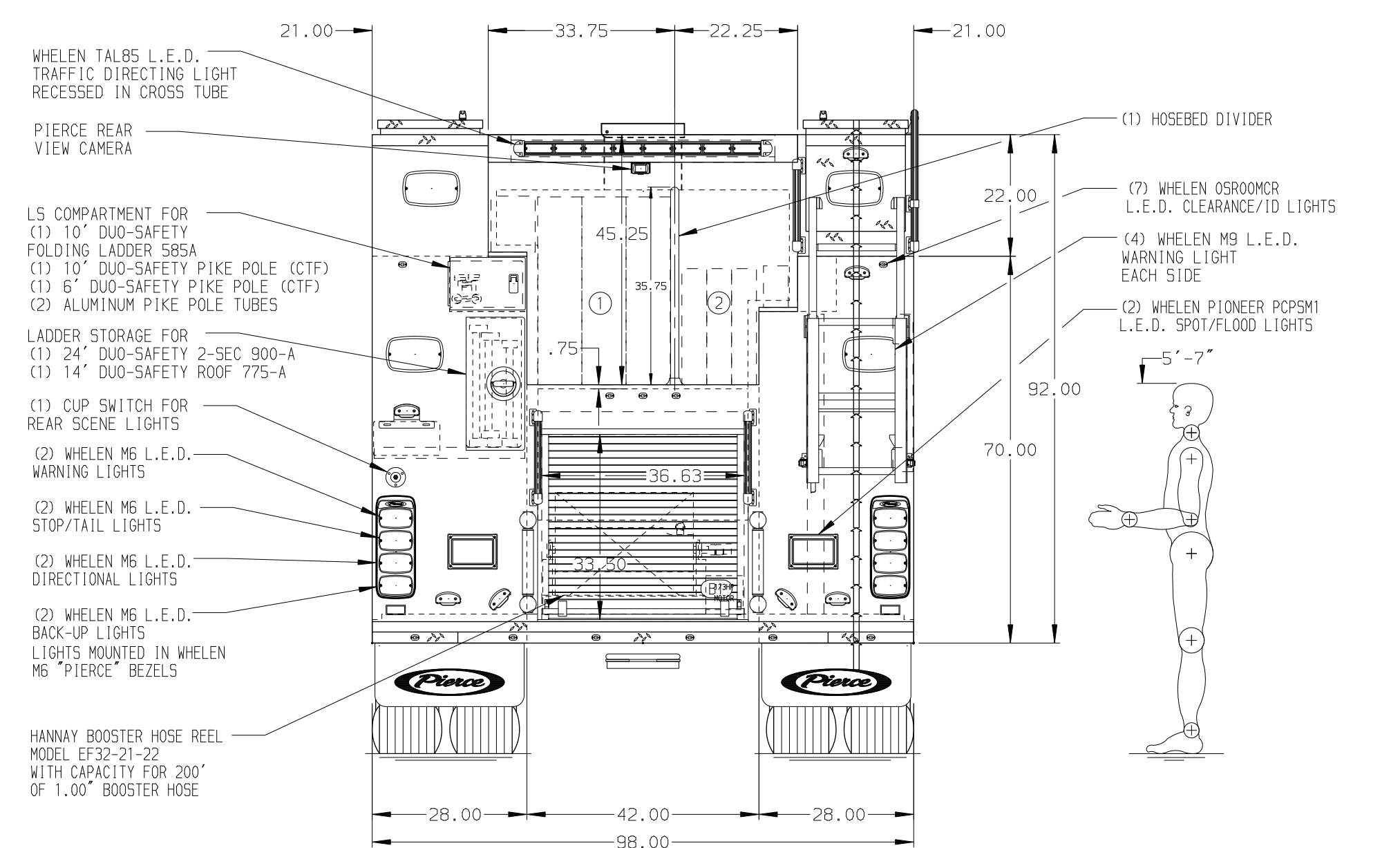
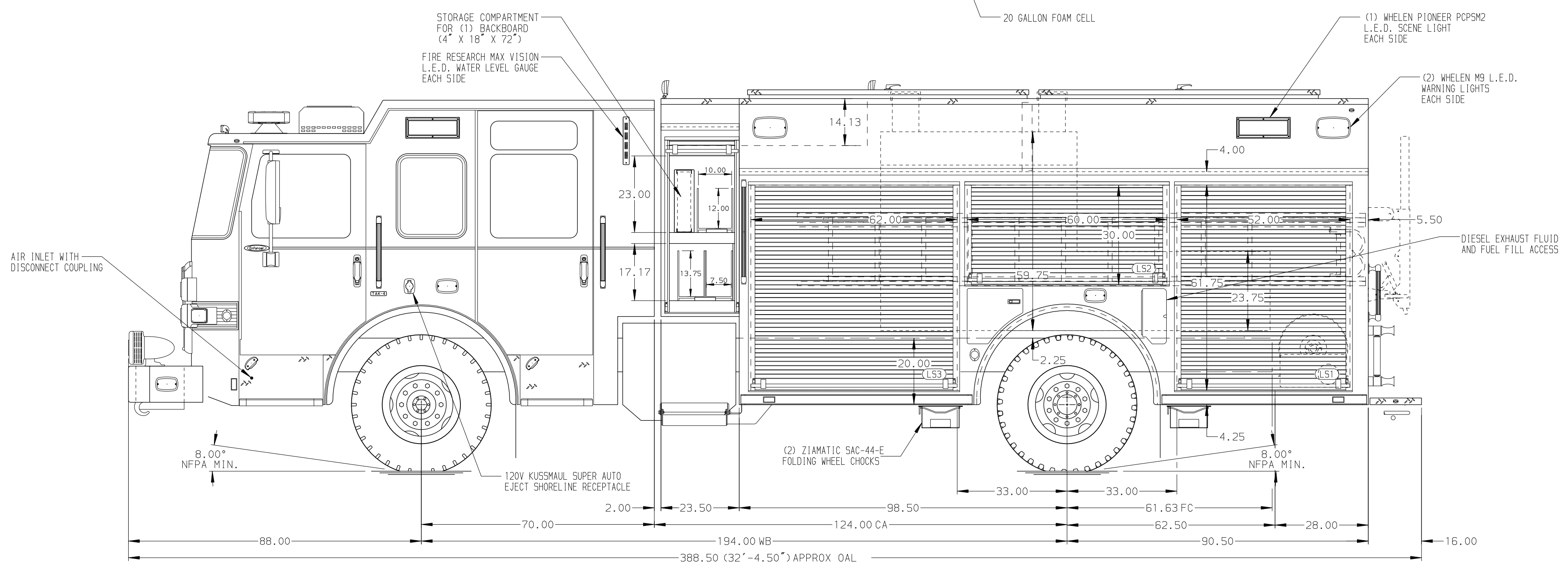


HOSEBED CAPACITIES

① 1000' OF 5.00" D.J. HOSE

② 600' OF 2.50" D.J. HOSE



ALUMINUM BODY

NOTE  
DIMENSIONS SHOWN ARE APPROXIMATE AND ARE SUBJECT TO MINOR DEVIATIONS AS MAY OCCUR OR BE NECESSARY IN CONSTRUCTION. MINOR DETAILS NOT SHOWN.

- BATTERY CHARGER LOCATED BEHIND THE DRIVER'S SEAT
- BATTERY CHARGER INDICATOR LOCATED ON DRIVER'S SEAT RISER
- DUAL L.E.D. LIGHT STRIPS LOCATED IN HOSE BED
- FOUR FULL WIDTH/DEPTH ADJUSTABLE SHELVES LOCATED PER ORDER
- TWO FLOOR MOUNTED SLIDE-OUT TRAYS WITH SIDE SLIDES LOCATED PER ORDER
- TWO SWING-OUT ALUMINUM TOOL BOARDS LOCATED PER ORDER
- PARTITION BETWEEN L51/B1 AND RS1/B1

REV	DATE	BY	CH	ENFORCER
26JUL24	AM1	AST		
14MAY24	MMF	AST		

		JOB NO.	41723
		SCALE	DATE
TITLE	2000-D-750P, 730 WATER W/20 FOAM, 189" PUC RESCUE (3) CROSSLAYS, HUSKY 3, LADDERS THRU BODY	DRAWN BY	MMF 16FEB24
FOR	Chandler, Arizona	CHECKED BY	THS 16FEB24
DWG NO.	41723AD	SHEET SIZE	D
		SHEET NO.	1 OF 1