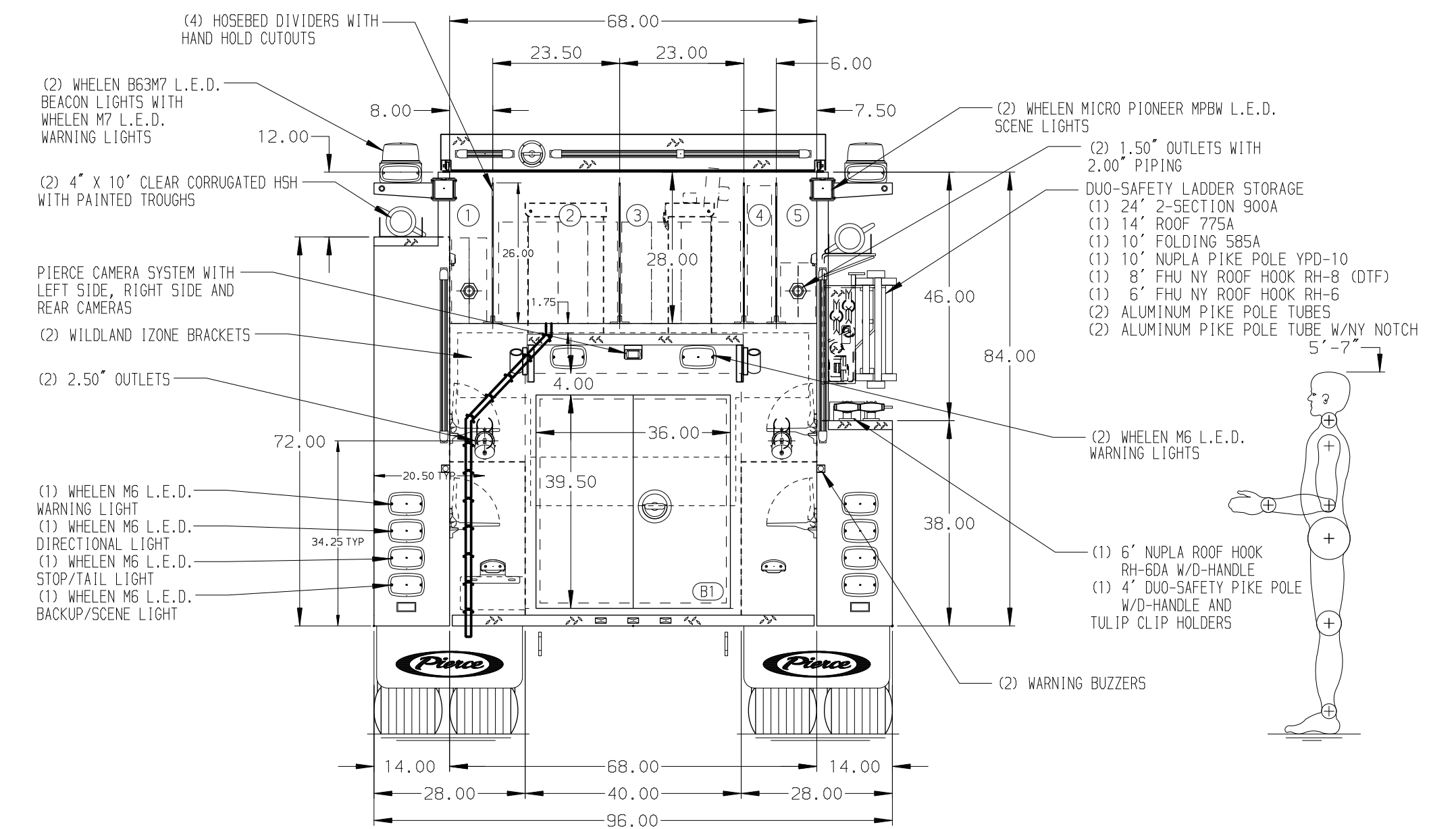


- HOSEBED CAPACITIES**
- ① - 350' OF 1.75" DJP HOSE
 - ② - 750' OF 3.00" DJP HOSE
 - ③ - 750' OF 3.00" DJP HOSE
 - ④ - 250' OF 2.50" DJP HOSE
 - ⑤ - 250' OF 1.75" DJP HOSE



ALUMINUM BODY

MAXIMUM O.A.H. 116"

NOTE
 DIMENSIONS SHOWN ARE APPROXIMATE AND ARE SUBJECT TO MINOR DEVIATIONS AS MAY OCCUR OR BE NECESSARY IN CONSTRUCTION. MINOR DETAILS NOT SHOWN.

- 1. AIR OUTLET WITH SHUT-OFF VALVE LOCATED AT THE DRIVER'S SIDE PUMP PANEL
- 2. CHARGER LOCATED BEHIND DRIVER'S SEAT
- 3. REMOTE CHARGE INDICATOR LOCATED ON DRIVER'S SEAT RISER
- 4. KANTREX FREEDOM DISPLAY LOCATED NEAR DRIVER'S SEAT RISER ON SPECIAL BRACKET
- 5. FOMPRO 2002 FOM SYSTEM

REV	DATE	BY	CH	ENFORCER
▽	04JUN24	SAM	BSE	CHASSIS DATA
▽	16MAY24	SAM	BSE	MAKE
▽	12APR24	SAM	BSE	PIERCE
▽	01MAR24	SAM	BSE	MODEL
▽	22FEB24	SAM	BSE	

	MANUFACTURING INC.	JOB NO.	41436-01-02
		SCALE	1:24
TITLE 1500-D-520P, 500G WATER W/20G FOAM, 124" BODY (2) CROSSLAYS, LADDER BRACKETS, DELUGE, BOOSTER REEL		DRAWN BY	SAM
		CHECKED BY	BSE
FOR LONG BEACH FIRE DEPARTMENT LONG BEACH, CALIFORNIA		SHEET SIZE	D
		SHEET NO.	1 OF 2
DWG NO. 41436AD-SH1			