

PUMPER BODY

Medium Aluminum 2nd Gen Pumper

CHASSIS

Enforcer Chassis

CHASSIS AXLE, FRONT, CUSTOM

19,500 Lb TAK-4 Axle

AXLE, REAR

24,000 Lb Slipper Spring Axle

ENGINE

Paccar MX13, 510HP

TRANSMISSION

Allison 6th Gen, 4000 EVS P

BUMPER

19" Extended Painted Steel

CAB

7000 Enforcer Cab

BODY

TOTAL TANK CAPACITY

500 Gallon Poly Tank

WATER CAPACITY

500 Gallons of Water

FOAM CELL

Foam Cell Not Required

COMPT, PUMPER, REAR

30.75" FF RollUp Rear Compt

COMPT, PUMPER, LEFT SIDE

152" RollUp Full Height Front & Rear FDLER

COMPT, PUMPER, RIGHT SIDE

152" RollUp Full Height Front and Rear

FIRE SUPPRESSION PUMPHOUSE

48" Control Zone Side Mount

PUMP

1500 GPM Waterous CSU

CROSSLAYS, 1.50"

(2) 1.50" Standard Capacity

CROSSLAYS, 2.50"

(1) 2.50" Standard Capacity

SPEEDLAYS

SpeedLays Not Required

GENERATOR

Generator Not Required

FOAM SYSTEM

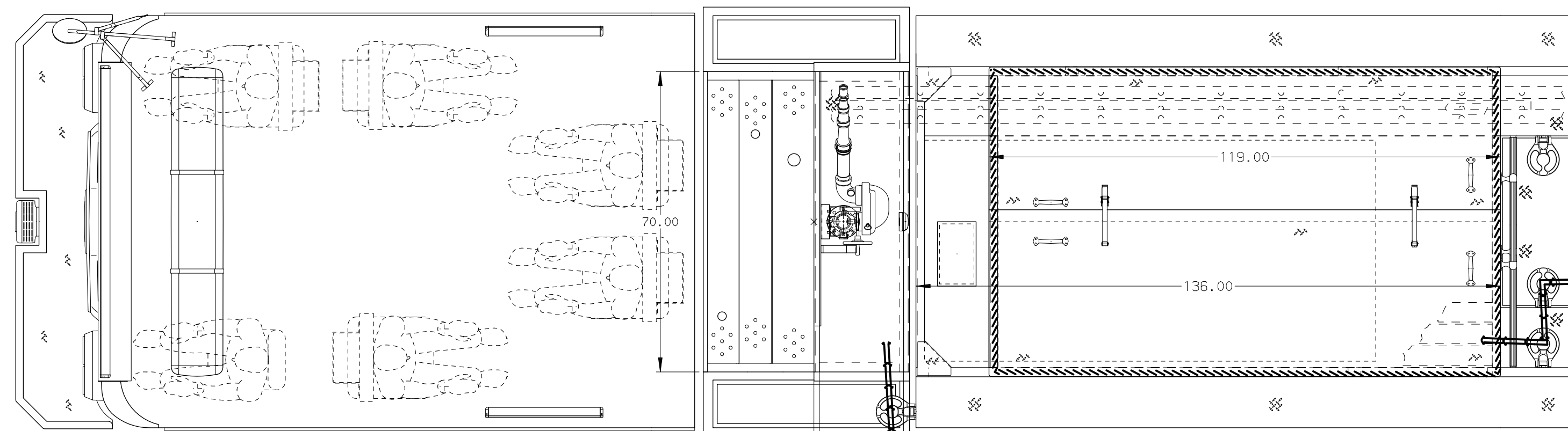
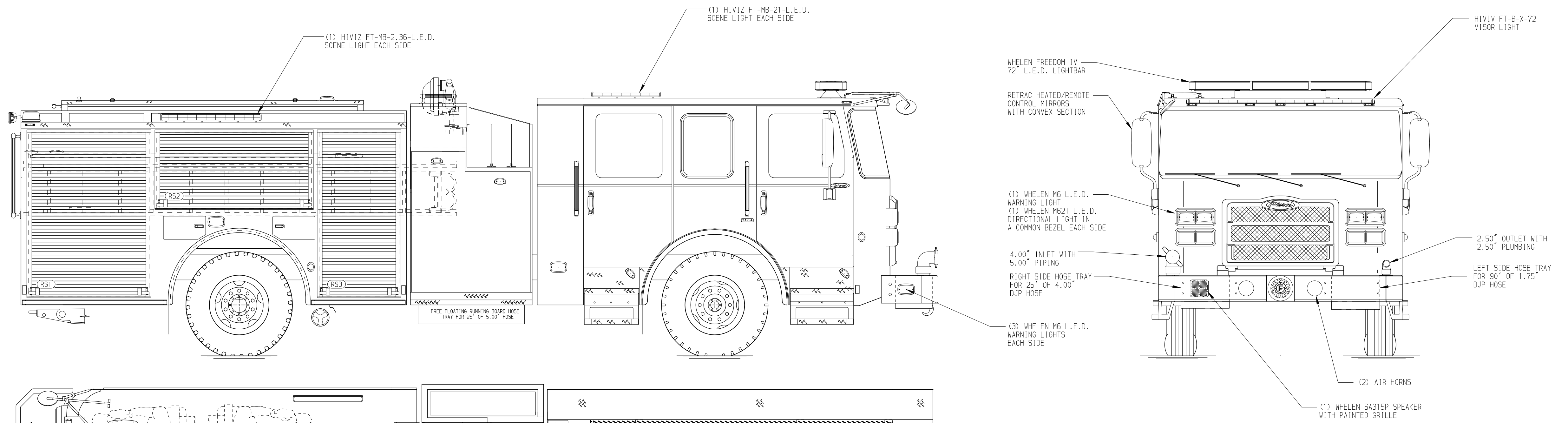
Foam System Not Required

SAFETY

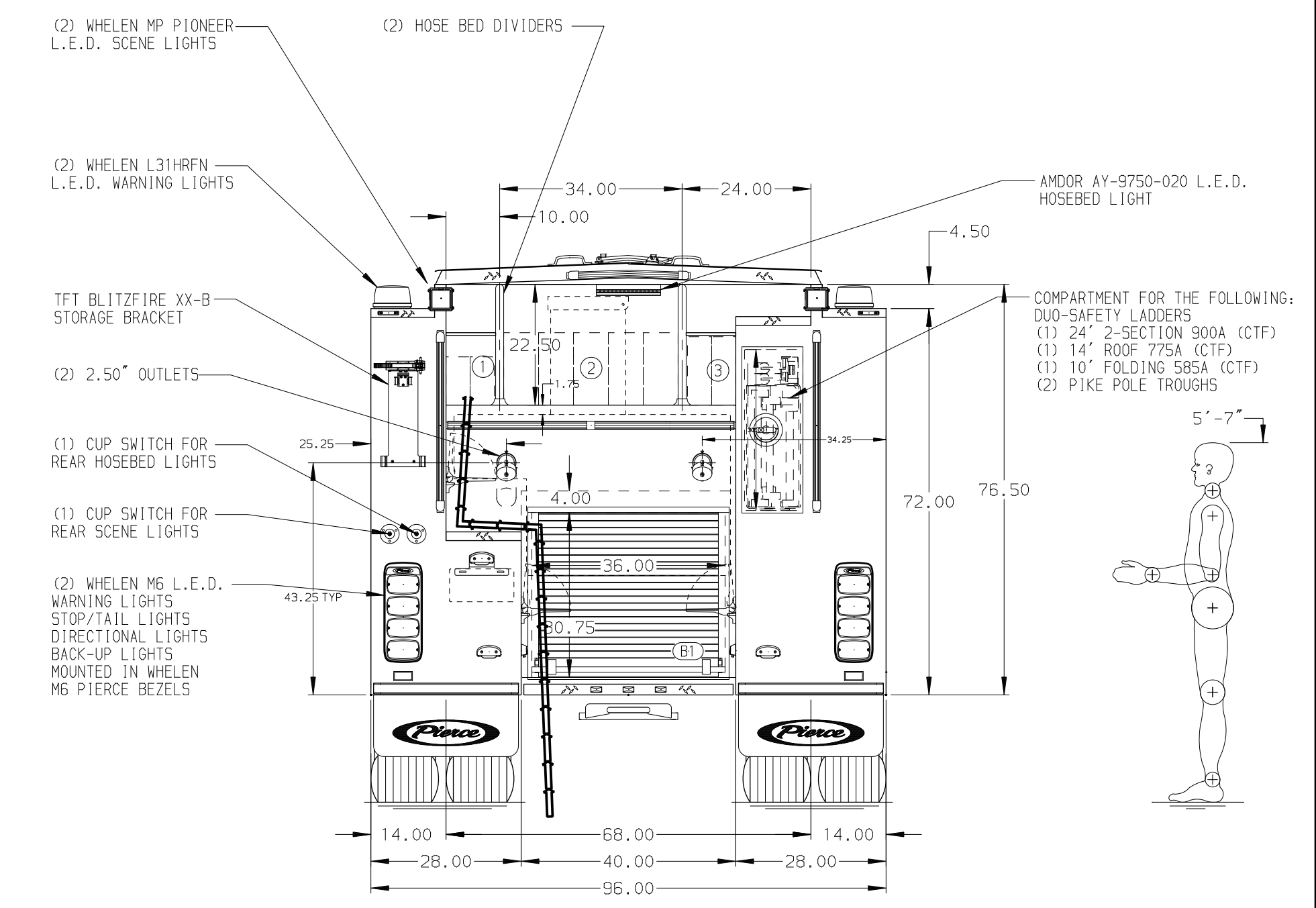
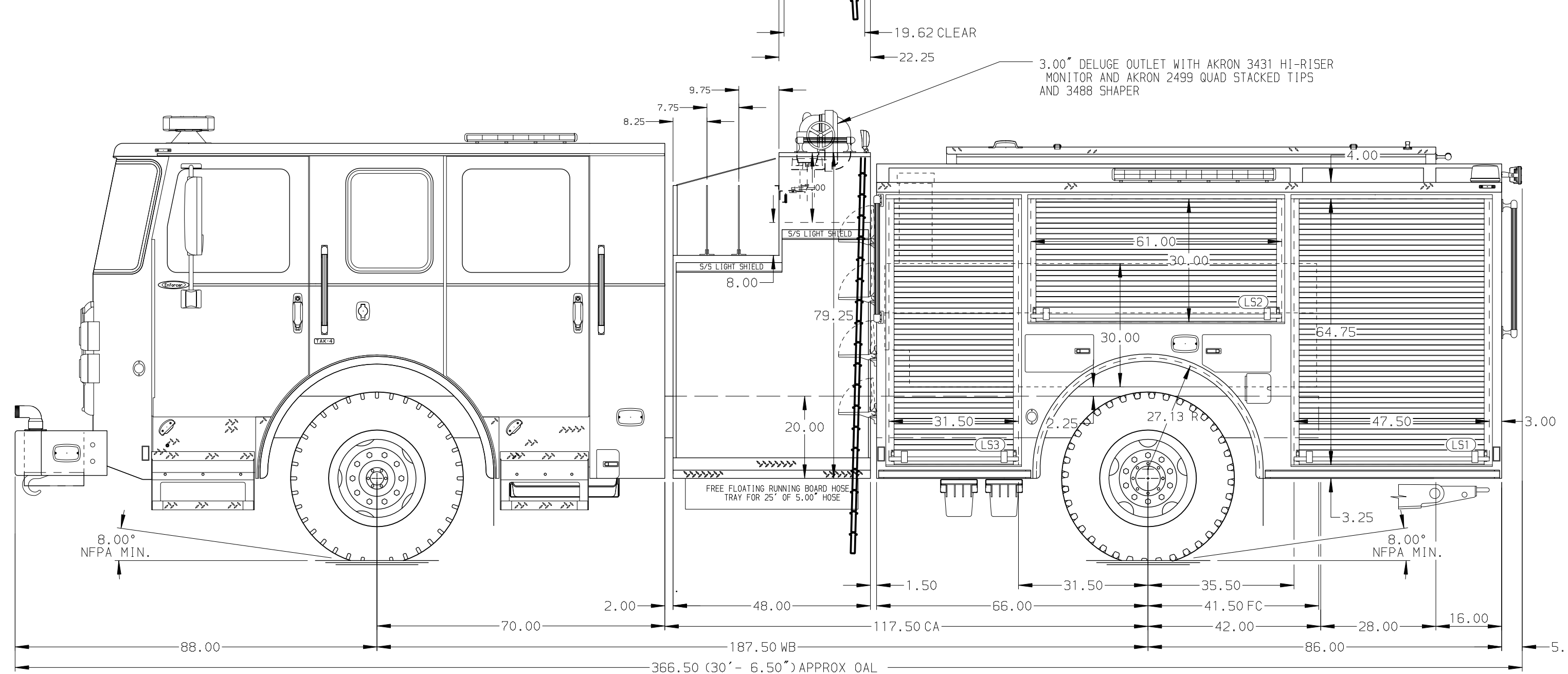
Not Required

NOTE
DIMENSIONS SHOWN ARE APPROXIMATE AND ARE SUBJECT TO MINOR DEVIATIONS AS MAY OCCUR OR BE NECESSARY IN CONSTRUCTION. MINOR DETAILS NOT SHOWN.

- ONE 1.50" OUTLET WITH 2.00" PIPING AND SWIVEL LOCATED IN CENTER BUMPER TRAY
- SHORELINE RECEPTACLE WITH KUSSMAUL SUPER AUTO-EJECT LOCATED ON DRIVER SIDE OF THE CAB
- AIR INLET WITH DISCONNECT COUPLING IN THE DRIVER SIDE STEPWELL
- BATTERY CHARGER LOCATED PER ORDER
- BATTERY CHARGE INDICATOR LOCATED ON DRIVER SEAT RISER
- SIX ADJUSTABLE SHELVES LOCATED PER ORDER
- FIVE FLOOR MOUNTED SLIDE-OUT TRAYS LOCATED PER ORDER
- ONE SWING-OUT TOOLBOARD LOCATED PER ORDER
- BACK WALL MOUNTED PEGBOARD LOCATED PER ORDER



HOSEBED CAPACITY	
BED 1	200' OF 2.50" D.J. POLY HOSE
BED 2	800' OF 4.00" D.J. POLY HOSE
BED 3	300' OF 2.50" D.J. POLY HOSE



Pierce MANUFACTURING INC.		JOB NO.	41133
		SCALE	DATE
		1:24	
TITLE		Pierce Pumper Approval Drawing	
FOR		College of the Canyons	
DRAWN BY		KLE	12FEB24
CHECKED BY		MMF	13FEB24
DWG NO.		41133AD	SHEET NO.
			1 OF 1

REV	DATE	BY	CH	ENFORCER
19JUN24	KLE	DTJ	MAKE	
06JUN24	KLE	DTJ	PIERCE	
19APR24	KLE	DTJ	MODEL	