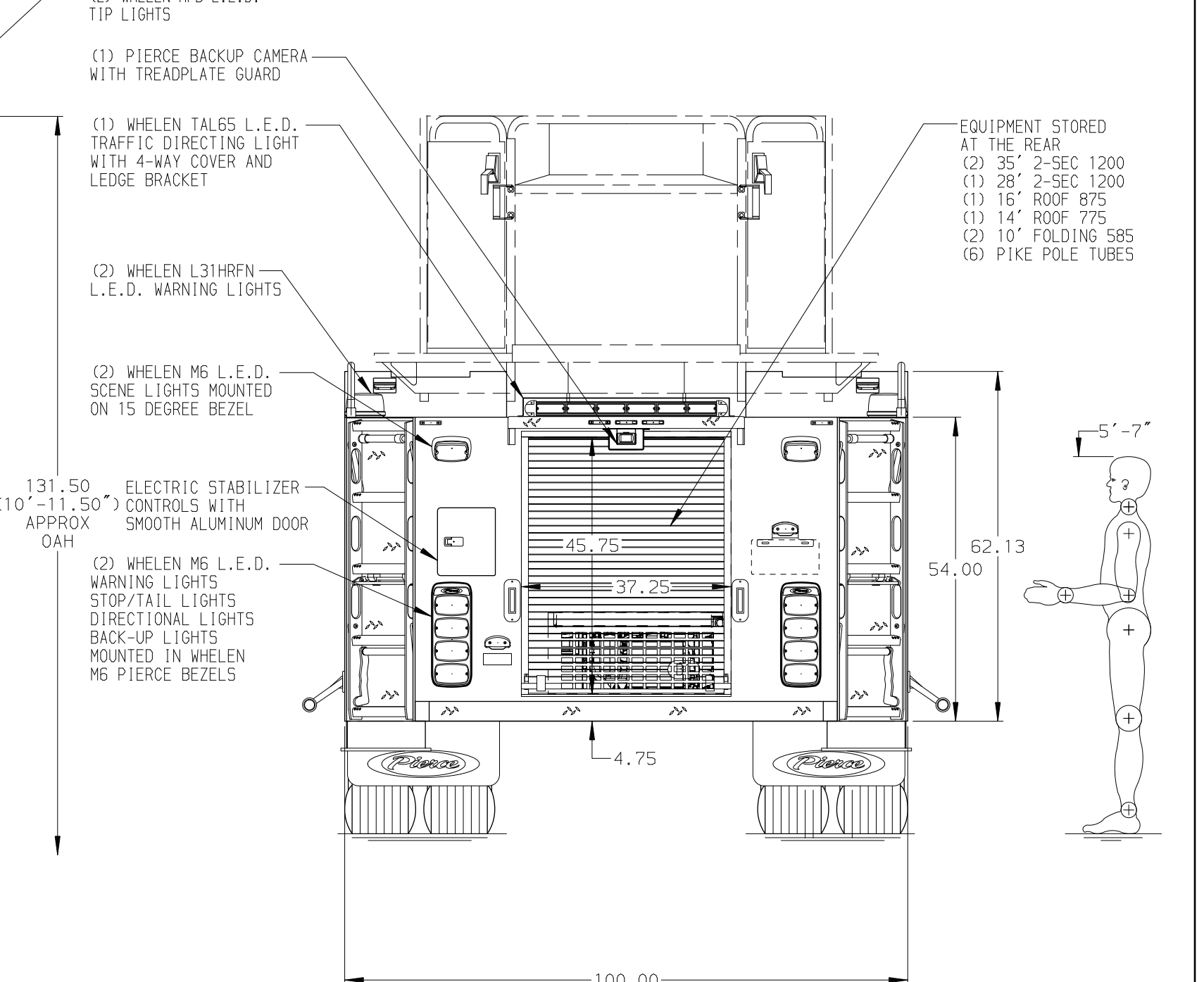
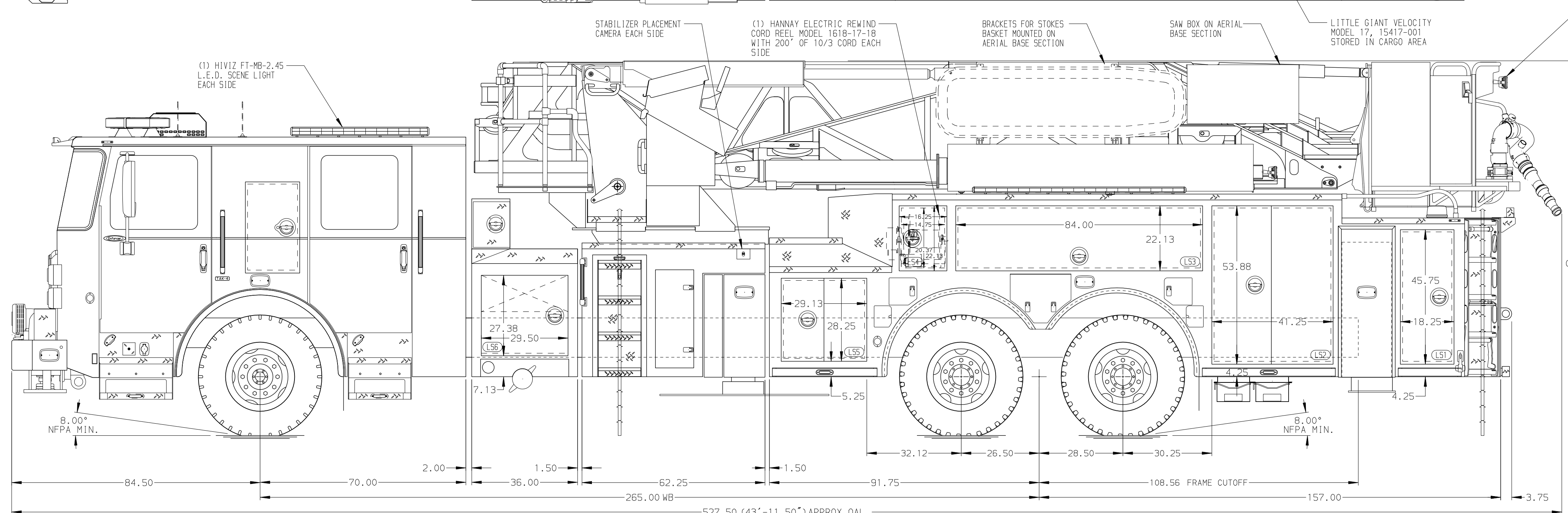


**BODY**  
 100' Ascendant Aerial Tower No Pump Alum Body  
**COMPT, LEFT SIDE**  
 FH/FD Lap Doors  
**COMPT, RIGHT SIDE**  
 FH/FD Lap Doors



<b>CHASSIS</b> Enforcer Chassis <b>ENGINE</b> 605 HP Cummins X15 Engine	<b>CAB</b> 7000 Enforcer Cab <b>BUMPER</b> 15" Extended Painted Aluminum	<b>AXLE, FRONT, CUSTOM</b> 24,000 Lb TAK-4 Axle <b>AXLE, REAR</b> 54,000 Lb Meritor Axle	<b>TRANSMISSION</b> Allison 6th Gen, 4000 EV5 P	<b>COMPARTMENT-NO PUMP</b> 36" Compartment, No Pump, Lap Door	<b>SAFETY</b> Frontal Impact Protection
--	---	---	--	--	--

<b>NOTE</b> DIMENSIONS SHOWN ARE APPROXIMATE AND ARE SUBJECT TO MINOR DEVIATIONS AS MAY OCCUR OR BE NECESSARY IN CONSTRUCTION. MINOR DETAILS NOT SHOWN.	1. SHORELINE RECEPTACLE WITH KUSSMAUL SUPER AUTO-EJECT LOCATED IN DRIVER SIDE STEPWELL 2. AIR INLET WITH DISCONNECT COUPLING IN THE DRIVER SIDE STEPWELL 3. BATTERY CHARGER LOCATED IN BODY COMPARTMENT PER ORDER 4. BATTERY CHARGE INDICATOR LOCATED ON DRIVER SEAT RISER 5. NINE ADJUSTABLE SHELVES LOCATED IN COMPARTMENTS PER ORDER 6. ONE VERTICAL PARTITION LOCATED IN COMPARTMENT PER ORDER 7. FOUR FLOOR MOUNTED SLIDE-OUT TRAYS LOCATED IN COMPARTMENTS PER ORDER 8. ONE ALUMINUM SWING-OUT TOOLBOARD LOCATED IN COMPARTMENT PER ORDER 9. TURTLE TILE MATTING LOCATED ON COMPARTMENT FLOORS PER ORDER 10. TWO FLOOR EXTENSIONS LOCATED IN COMPARTMENTS PER ORDER	11. ONE CIRCUIT BREAKER PANEL LOCATED IN COMPARTMENT PER ORDER 12. TEN RECEPTACLES LOCATED IN COMPARTMENTS PER ORDER 13. HARRISON BKW MID-0 HYDRAULIC GENERATOR LOCATED IN B1 COMPARTMENT 14. DRI-DECK MATTING ON COMPARTMENT TRAYS & SHELVES PER ORDER 15. ONE WEBBING RESTRAINT LOCATED IN COMPARTMENT PER ORDER 16. ONE TWO-WAY SLIDE-OUT TRAY LOCATED IN TRANSVERSE COMPARTMENT PER ORDER 17. DC POWER TO AERIAL TIP 18. TWO WHELEN PSL16W L.E.D. LIGHTS UNDER BASKET CORNER STEPS 19. FIRE RESEARCH 2-WAY INTERCOM 20. NON-RAISED AERIAL PEDESTAL	21. 3-in-1 LYFECOMBO BRACKETS AT AERIAL BASKET 22. TECNIO RUNG LIGHTING AT AERIAL DEVICE
--	--	---	---

		JOB NO.	41125
		SCALE	1:24
<b>CHASSIS DATA</b> <b>TITLE</b> 100' ASCENDANT AERIAL TOWER AND BODY ASSEMBLY <b>FOR</b> WEST WARWICK FIRE DEPARTMENT, RI WEST WARWICK, RI	DRAWN BY	ANZ	18JAN24
	CHECKED BY	NAK	24JAN24
<b>DWG NO.</b> 41125AD <b>NO.</b> D	SHEET SIZE		SHEET NO.
			1 OF 1