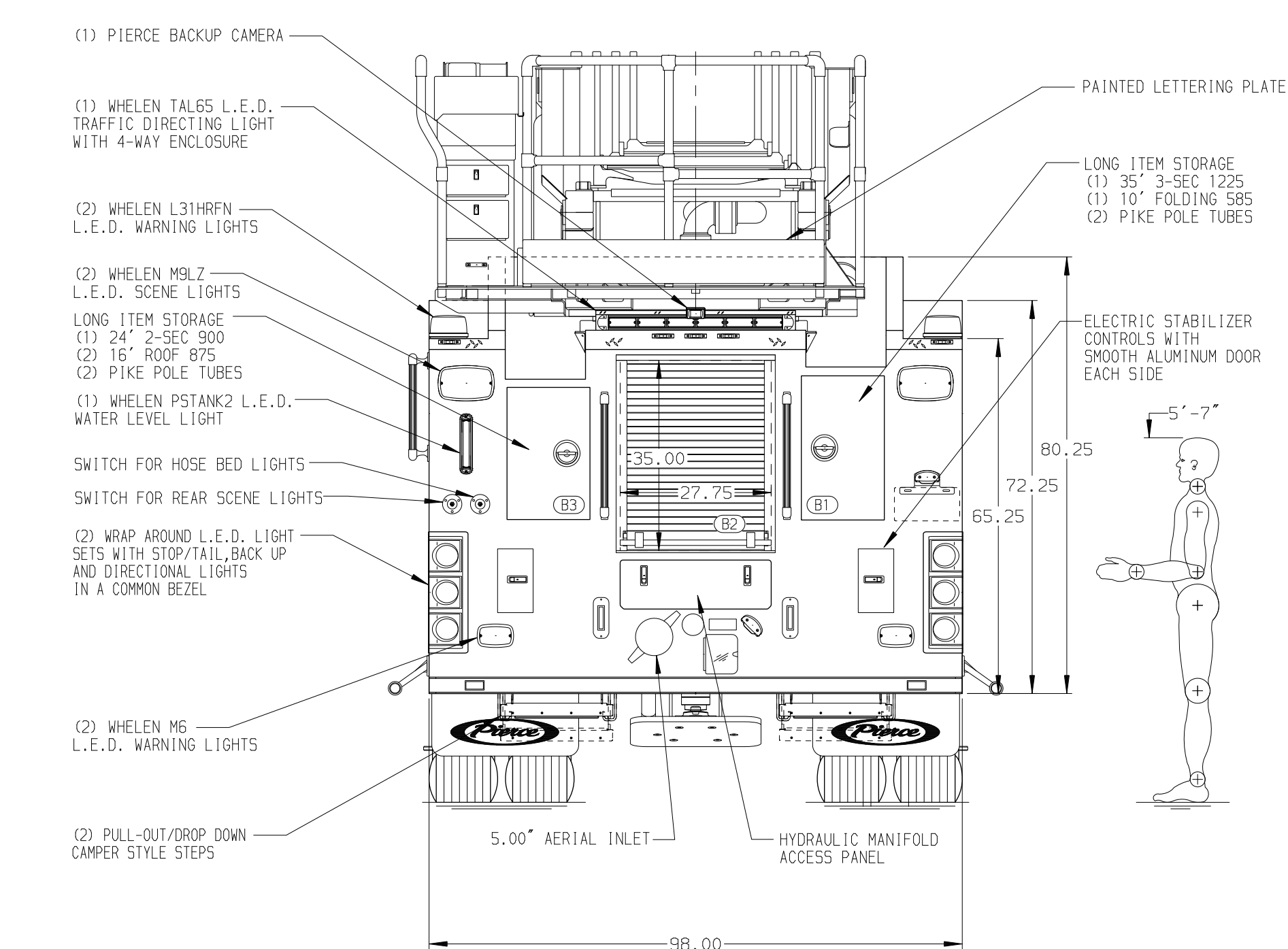
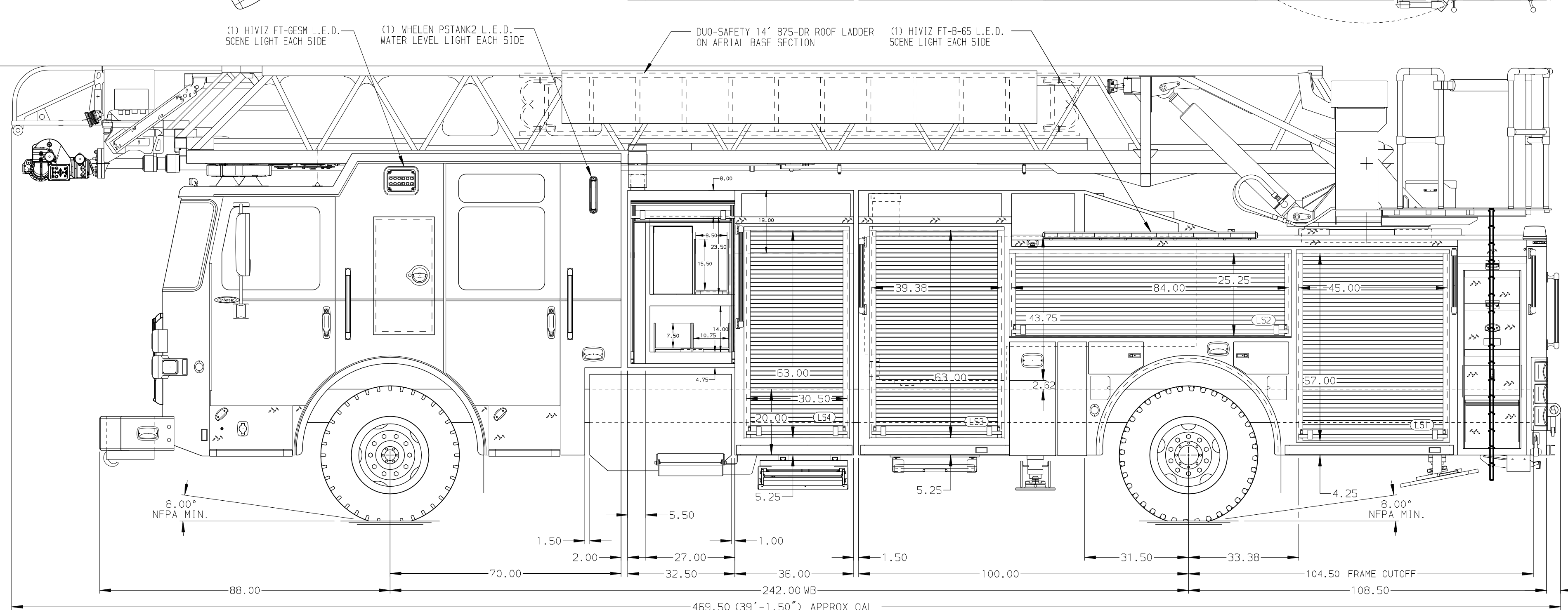


BODY	TOTAL TANK CAPACITY
107' ASL Aluminum Body PUC	500 Gallon Poly Tank
COMPT, LEFT SIDE FRONT	WATER CAPACITY
Full Height RollUp Forward	500 Gallons of Water
COMPT, LEFT SIDE REAR	FOAM CELL CAPACITY
Full Height RollUp Rearward	Foam Cell Not Required
COMPT, RIGHT SIDE FRONT	FOAM SYSTEM
Full Height RollUp Forward	Foam System Not Required
COMPT, RIGHT SIDE REAR	
Full Height RollUp Rearward	



CHASSIS Enforcer Chassis, PUC 450 HP Cummins L9 Engine	CAB 7010 Notched Enforcer Cab, PUC 19" Extended Painted Steel	AXLE, FRONT, CUSTOM 23,000 Lb Dana Axle AXLE, REAR 33,500 Lb Meritor Axle	TRANSMISSION Allison 6th Gen, 3000 EV5 P	PUMPHOUSE Control Zone, PAL/PAP PUC PUMP 1500 GPM Pierce PUC	CROSSLAYS, 1.50" (2) 1.50", Poly Trays, 200' CROSSLAYS, 2.50" (1) 2.50", Poly Tray, 200'	SPEEDLAYS GENERATOR Generator Not Required	SAFETY Side Roll and Frontal Impact Protection	Pierce MANUFACTURING INC.	JOB NO. 41088
NOTE DIMENSIONS SHOWN ARE APPROXIMATE AND ARE SUBJECT TO MINOR DEVIATIONS AS MAY OCCUR OR BE NECESSARY IN CONSTRUCTION. MINOR DETAILS NOT SHOWN.	1. NO LIMITED RETRACTION REQUIRED 2. 1.50" OUTLET WITH 2.00' PIPING LOCATED IN LEFT SIDE BUMPER TRAY 3. SHORELINE RECEPTACLE WITH KUSSMALL SUPER AUTO-EJECT LOCATED IN DRIVER SIDE STEP WELL 4. AIR INLET WITH DISCONNECT COUPLING IN THE DRIVER SIDE STEPMELL 5. BATTERY CHARGER LOCATED PER ORDER 6. BATTERY CHARGE INDICATOR LOCATED NEAR DRIVER'S SEAT RISER WITH BRACKET 7. SEVEN ADJUSTABLE SHELVES LOCATED IN COMPARTMENTS PER ORDER 8. THREE FLOOR MOUNTED SLIDE-OUT TRAYS LOCATED PER ORDER 9. ONE ALUMINUM SWING-OUT TOOLBOARD LOCATED IN COMPARTMENT PER ORDER 10. ONE BACK WALL MOUNTED PEGBOARD LOCATED IN COMPARTMENT PER ORDER	11. THREE RECEPTACLES LOCATED PER ORDER 12. NON-RAISED AERIAL PEDESTAL 13. LIFTING EYE ROPE RESCUE ATTACHMENT AT AERIAL TIP 14. 1500 GPM HIGH FLOW WATERWAY						MANUFACTURING INC.	SCALE 1:24
								Chassis DATA	TITLE 107' ASCENDANT AERIAL LADDER AND BODY ASSEMBLY
								FOR PIERCE	500 GALLON WATER TANK
								MODEL	VILLAGE OF STICKNEY FIRE DEPARTMENT
								DWG NO.	STICKNEY, IL
									41088AD
									SHEET NO. 1 OF 1