

PUMPER BODY

Long Aluminum 2nd Gen Pumper

CHASSIS

Enforcer Chassis

CHASSIS AXLE, FRONT, CUSTOM

19,500 lb TAK-4 Axle

AXLE, REAR

24,000 lb Meritor Axle

ENGINE

450 HP Cummins L9 Engine

TRANSMISSION

Allison 6th Gen, 3000 EVS P

BUMPER

19" Extended Painted Steel

CAB

7010 Enforcer Cab

BODY

TOTAL TANK CAPACITY

530 Gallon Poly Tank

WATER CAPACITY

500 Gallons of Water

FOAM CELL

30 Gallon Foam Cell

COMPT, PUMPER, REAR

34.75" FF Rollup Rear Comp

COMPT, PUMPER, LEFT SIDE

161" Rollup Full Height Front & Rear FDLER

COMPT, PUMPER, RIGHT SIDE

161" Rollup Full Height Front & Rear FDLER

FIRE SUPPRESSION PUMPHOUSE

48" Control Zone Side Mount

PUMP

1500 GPM Waterous CSU

CROSSLAYS, 1.50"

(2) 1.50" Standard Capacity

CROSSLAYS, 2.50"

2.50" Crosslay Not Required

SPEEDLAYS

SpeedLays Not Required

GENERATOR

Generator Not Required

FOAM SYSTEM

Husky 3 Single Agent Foam System

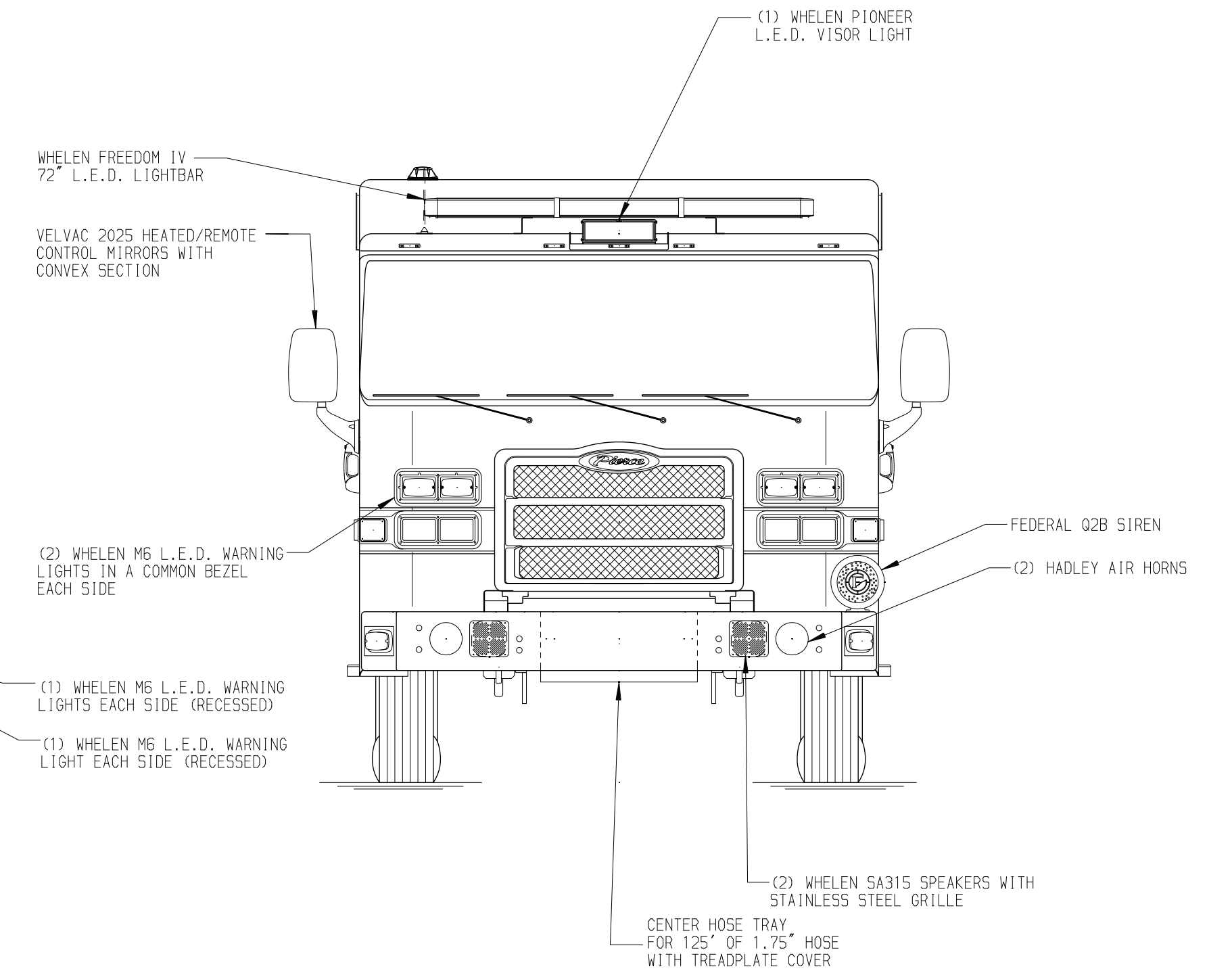
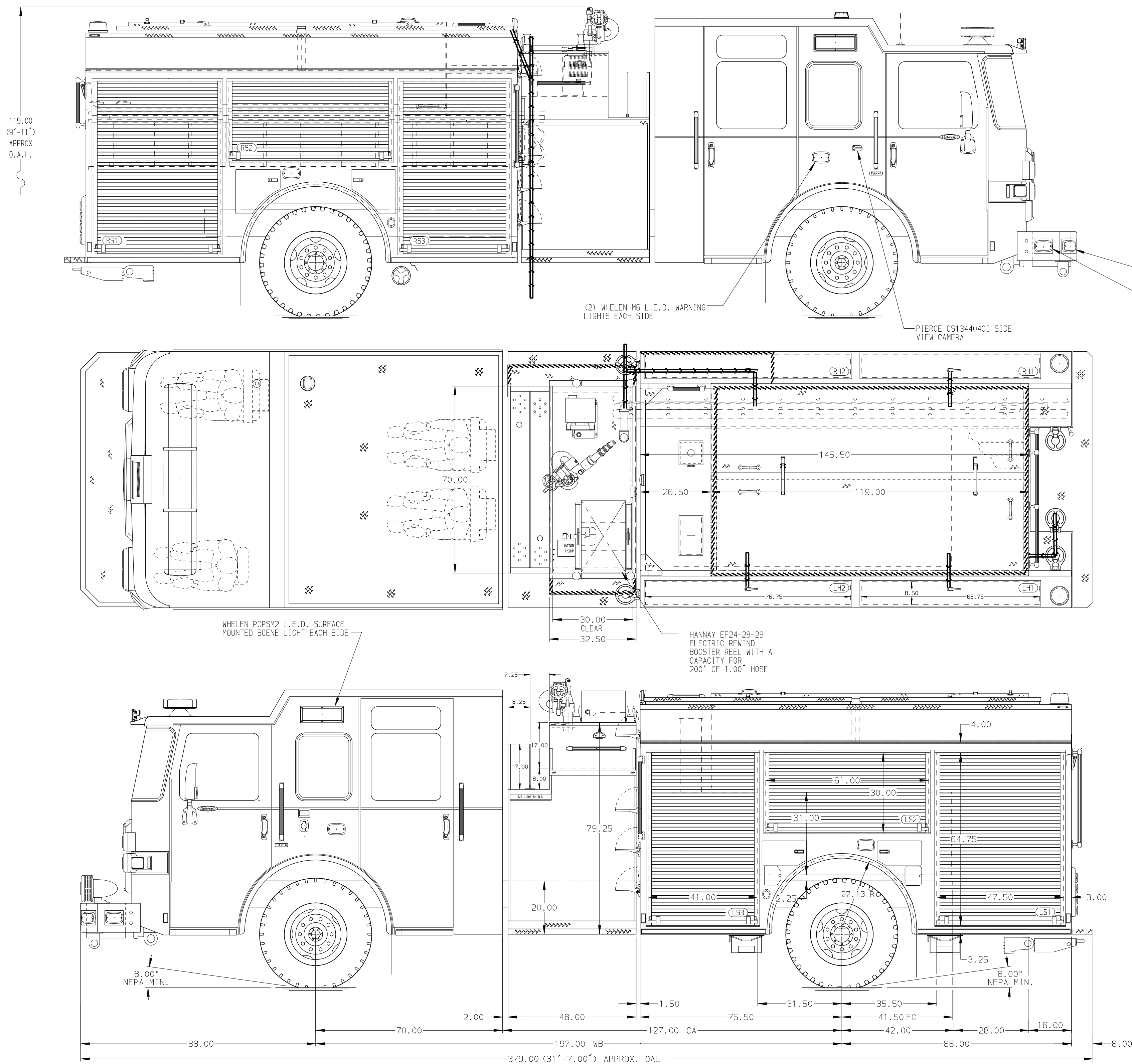
SAFETY

Side Roll and Frontal Impact Protection

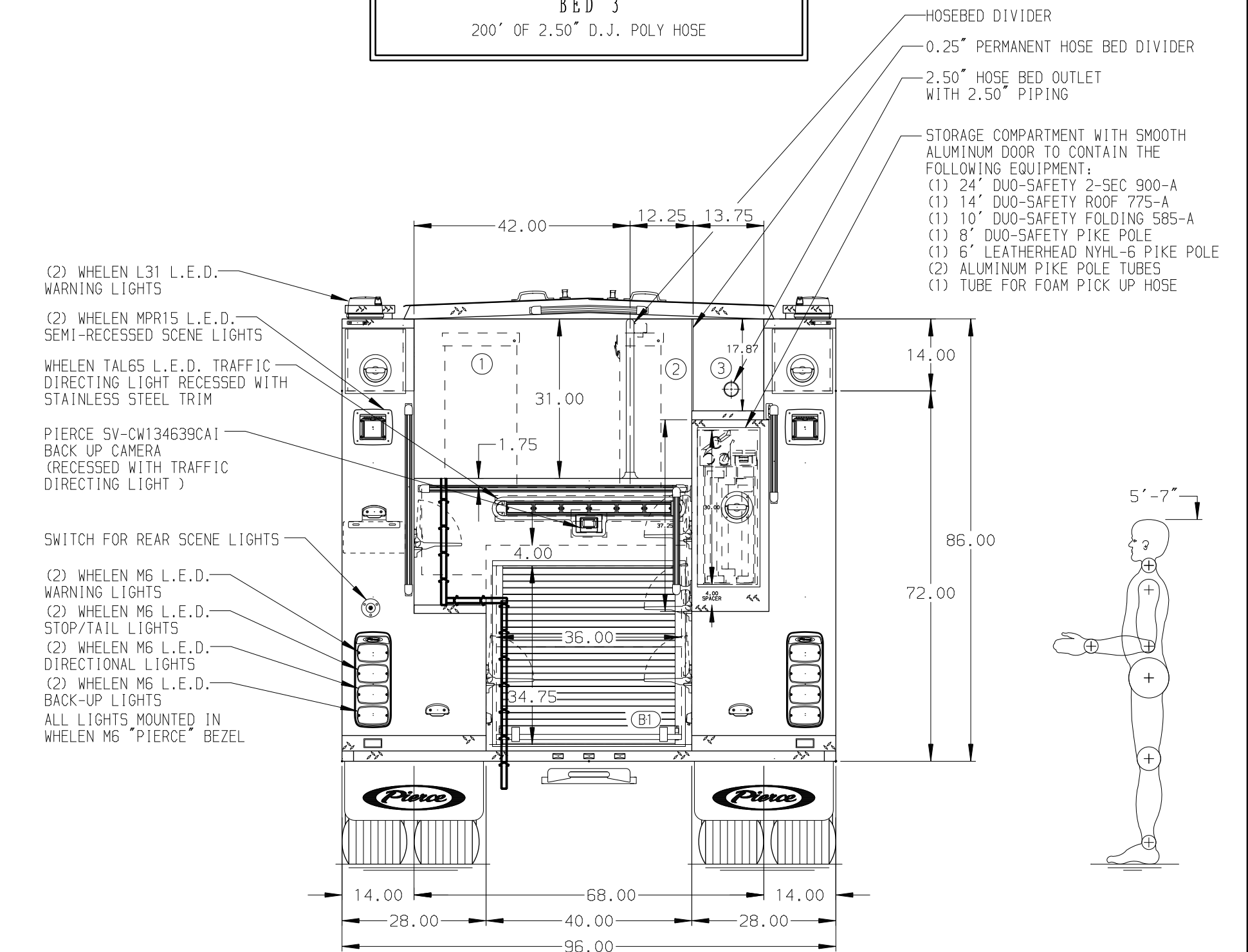
NOTE

DIMENSIONS SHOWN ARE APPROXIMATE AND ARE SUBJECT TO MINOR DEVIATIONS AS MAY OCCUR OR BE NECESSARY IN CONSTRUCTION. MINOR DETAILS NOT SHOWN.

- ONE 1.50" OUTLET WITH 2.00" PIPING AND SWIVEL LOCATED IN CENTER BUMPER TRAY
- SHORELINE RECEPTACLE WITH KUSSMAUL SUPER AUTO-EJECT LOCATED ON DRIVER SIDE OF THE CAB
- AIR INLET WITH DISCONNECT COUPLING IN THE DRIVER SIDE STEPWELL
- BATTERY CHARGER LOCATED IN COMPARTMENT PER SHOP ORDER
- BATTERY CHARGE INDICATOR LOCATED ON THE DRIVER SIDE OF CAB
- NINE ADJUSTABLE SHELVES IN COMPARTMENTS PER SHOP ORDER
- TWO FLOOR MOUNTED SLIDE-OUT TRAYS LOCATED PER SHOP ORDER



HOSEBED CAPACITY	
BED 1	1500' OF 5.00" D.J. POLY HOSE
BED 2	300' OF 2.50" D.J. POLY HOSE
BED 3	200' OF 2.50" D.J. POLY HOSE



		MANUFACTURING INC.		JOB NO.	40725
				SCALE	DATE
				1:24	
				DRAWN BY	09APR24
				BTH	
				CHECKED BY	09APR24
				MMF	
				SHEET SIZE	SHEET NO.
				D	1 OF 1

REV	DATE	BY	CH	ENFORCER
22JUL24	MMF	TDC		CHASSIS DATA
24MAY24	MMF	JGO		MAKE PIERCE
24MAY24	MMF	JGO		MODEL

TITLE	Pierce Pumper Approval Drawing
FOR	Fort Smith Fire Department
DWG NO.	40725AD