

PUMPER BODY
Long Aluminum 2nd Gen Pumper

CHASSIS
Enforcer Chassis

CHASSIS AXLE, FRONT, CUSTOM
19,500 Lb TAK-4 Axle

AXLE, REAR
31,000 Lb Dana Axle

ENGINE
450 HP Cummins L9 Engine

TRANSMISSION
Allison 6th Gen, 3000 EVS P

BUMPER
19" Extended Stainless Steel

CAB
7010 Enforcer Cab

BODY

TOTAL TANK CAPACITY
1030 Gal/Lon New York Style Poly Tank

WATER CAPACITY
1000 Gallons of Water

FOAM CELL
30 Gallon Foam Cell

COMPT, PUMPER, REAR
23.50" FF Rollup Rear Compt.

COMPT, PUMPER, LEFT SIDE
161" Lap Full Height Front & Rear FDLER

COMPT, PUMPER, RIGHT SIDE
161" Lap Full Height & Depth Front Full Height Rear FDLER

FIRE SUPPRESSION PUMPHOUSE
52" Control Zone Top Mount

PUMP
2000 GPM Waterous CSU

CROSSLAYS, 1.50"
1.50" CrossLays Not Required

CROSSLAYS, 2.50"
2.50" CrossLay Not Required

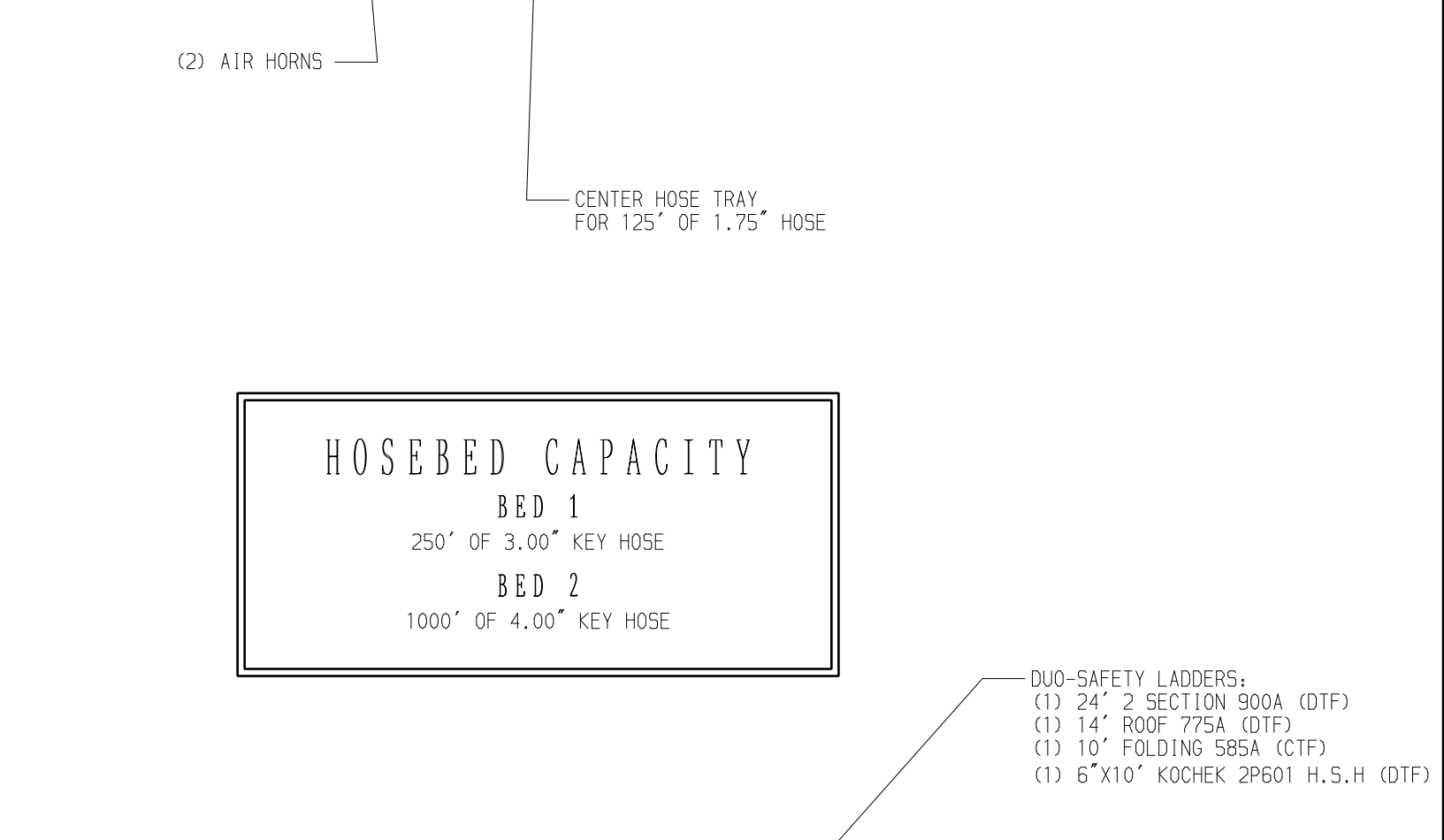
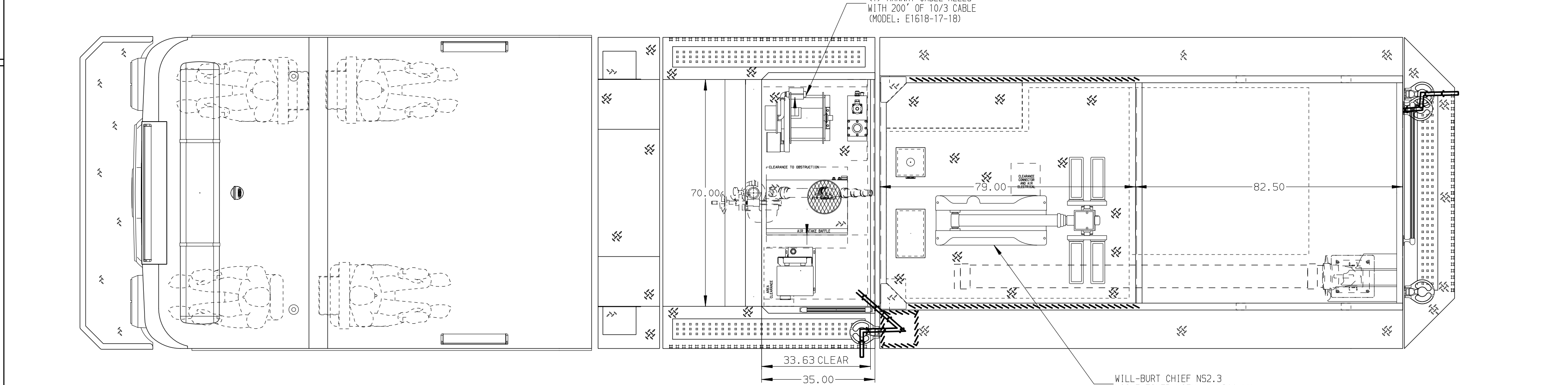
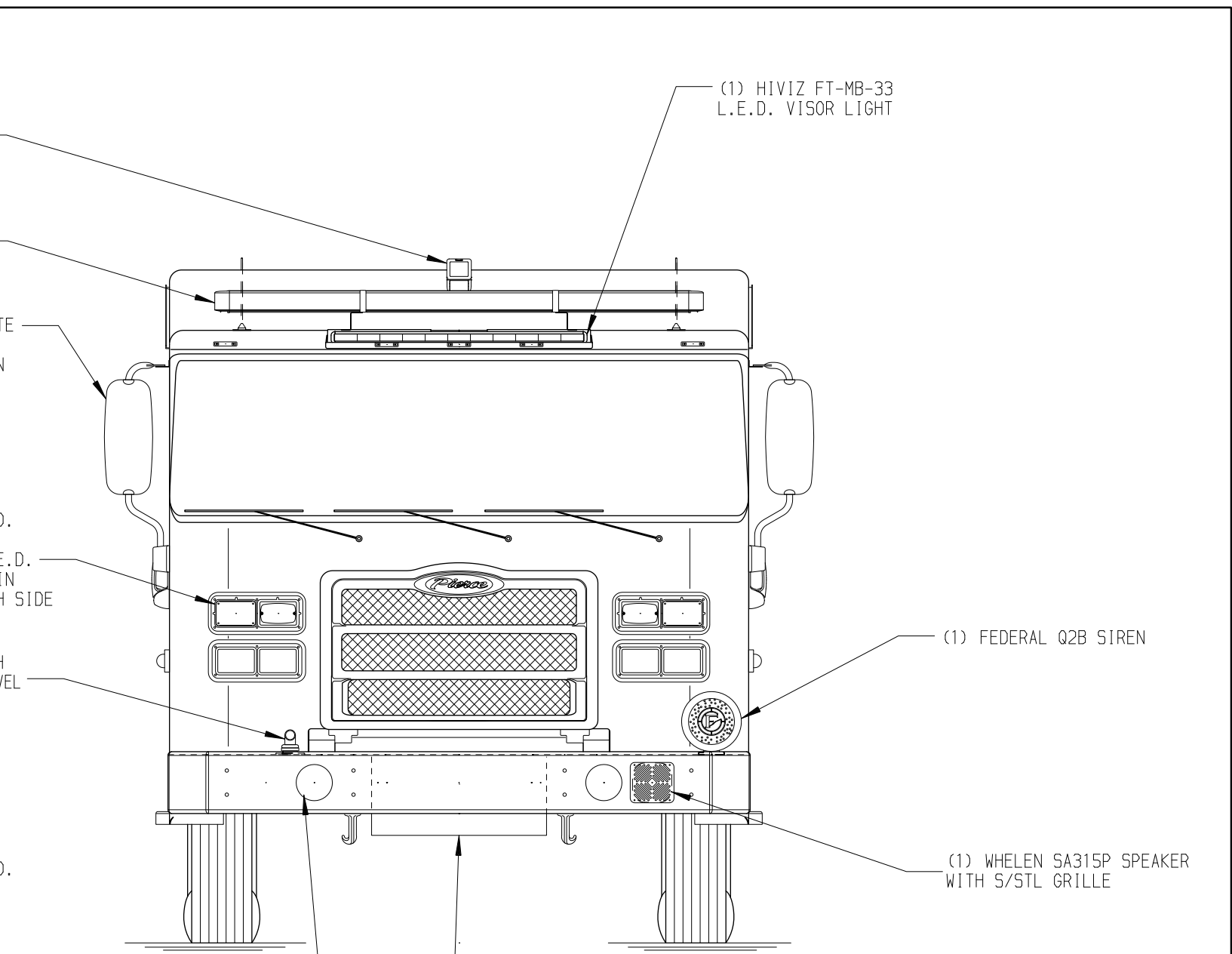
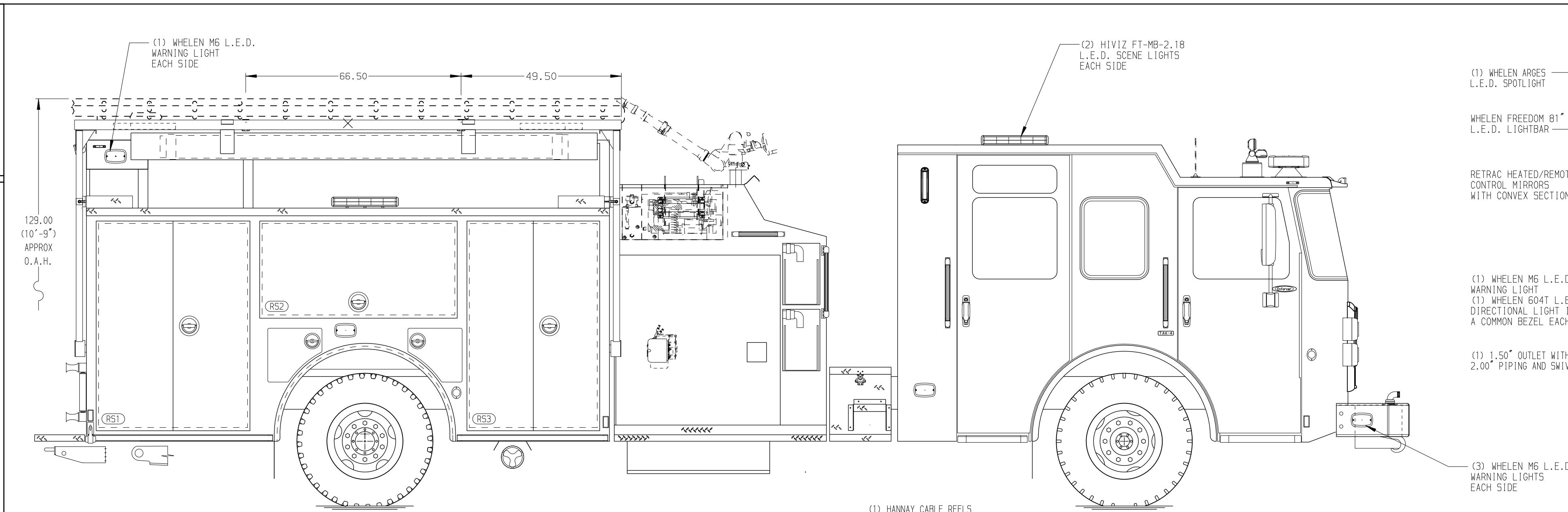
SPEEDLAYS
(2) 1.50" W/Tray Std. Capacity

GENERATOR
Harrison 3.0kw MSV 120v

FOAM SYSTEM
Husky 3 Single Agent Foam System

SAFETY

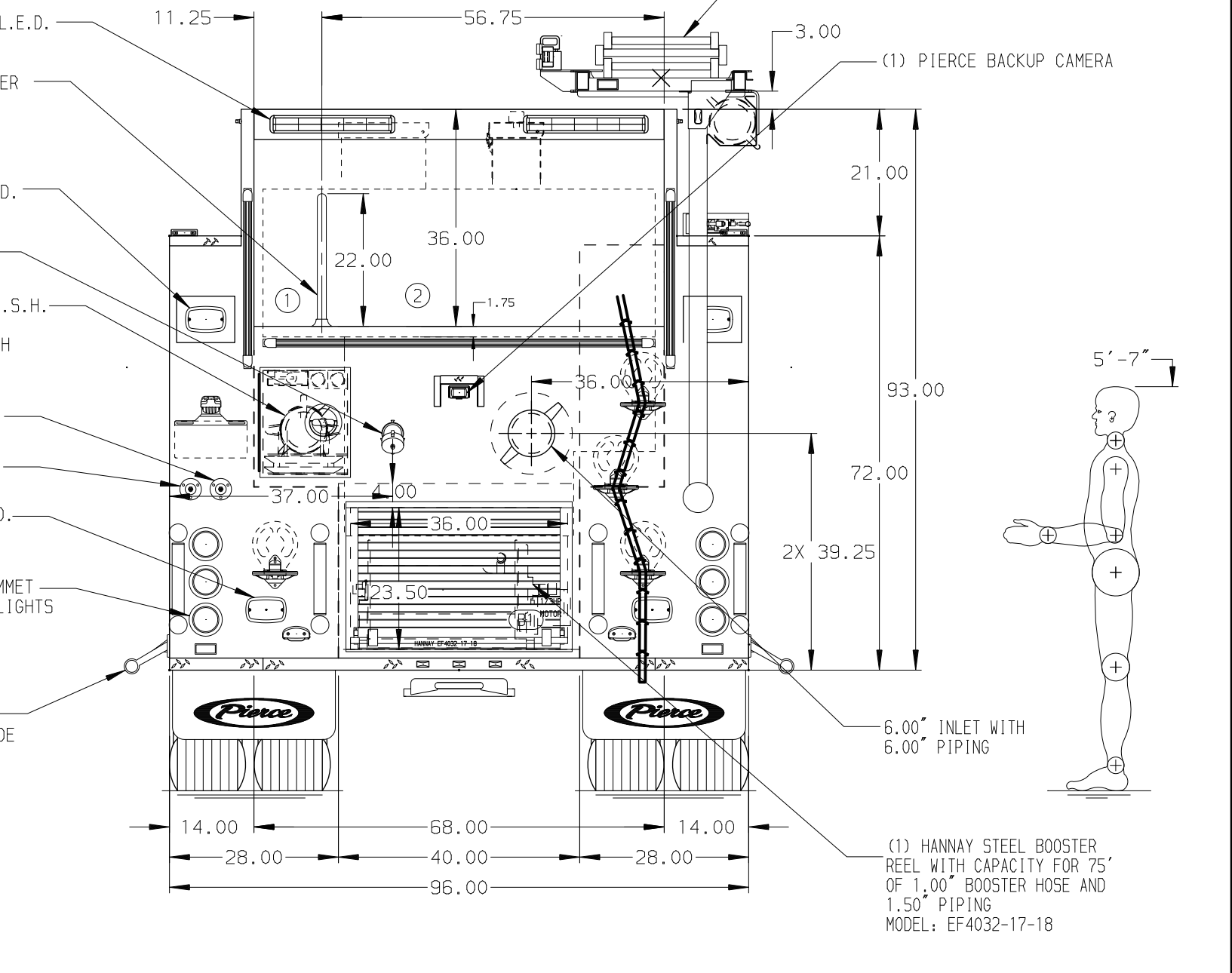
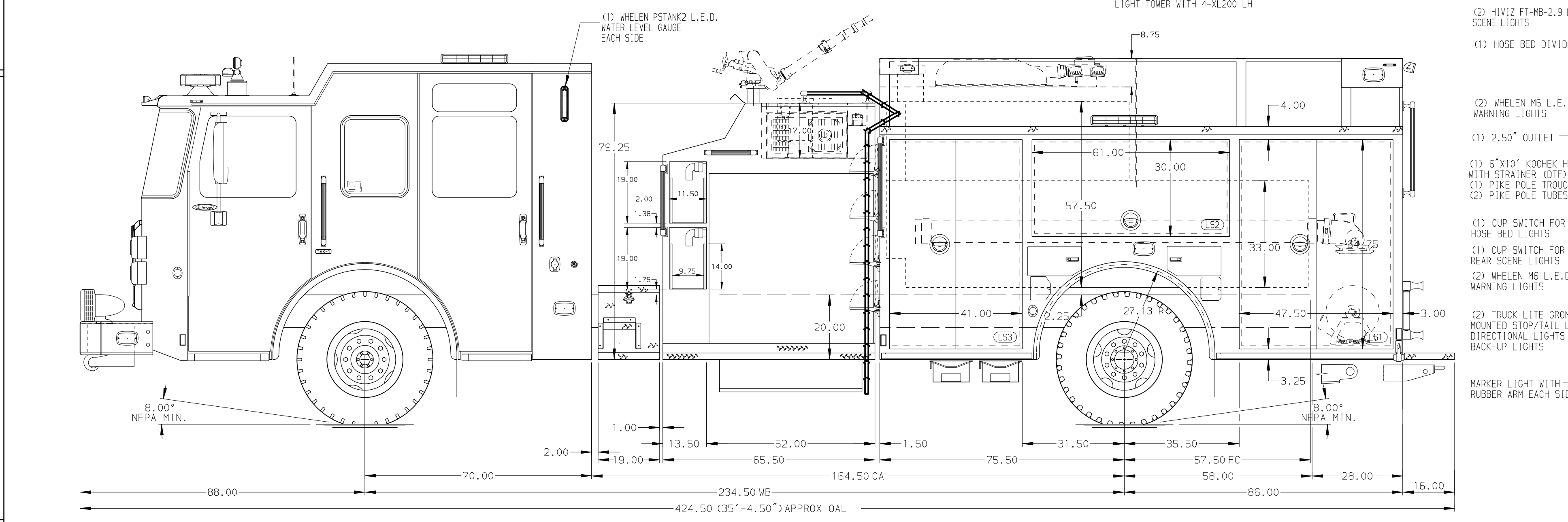
NOTE
DIMENSIONS SHOWN ARE APPROXIMATE AND ARE SUBJECT TO MINOR DEVIATIONS AS MAY OCCUR OR BE NECESSARY IN CONSTRUCTION. MINOR DETAILS NOT SHOWN.



HOSEBED CAPACITY

BED 1
250' OF 3.00" KEY HOSE

BED 2
1000' OF 4.00" KEY HOSE



- ONSPOT AUTOMATIC TIRE CHAINS
- SHORELINE RECEPTACLE WITH KUSSMAUL SUPER AUTO-EJECT LOCATED ON DRIVER SIDE OF THE CAB
- AIR INLET WITH DISCONNECT COUPLING ON THE DRIVER SIDE OF CAB
- BATTERY CHARGER LOCATED PER ORDER
- BATTERY CHARGE INDICATOR LOCATED ON DRIVER SIDE THROUGH WINDOW
- SEVEN ADJUSTABLE SHELVES LOCATED PER ORDER
- ONE FLOOR MOUNTED SLIDE-OUT TRAY LOCATED PER ORDER
- ONE PARTITION LOCATED PER ORDER

REV	DATE	BY	CH	ENFORCER
18SEP24	JAM	COS		CHASSIS DATA
11SEP24	JAM	COS		MAKE
18JUL24	MMF	COS		PIERCE
11JUL24	MMF	COS		MODEL

		JOB NO.	40665
		SCALE	DATE
TITLE	Pierce Pumper Approval Drawing		
FOR	Ironwood Public Safety Department		
DWG NO.	40665AD		
DRAWN BY	JAM	DATE	15MAY24
CHECKED BY	MMF	DATE	16MAY24
SHEET SIZE	D	SHEET NO.	1 OF 1