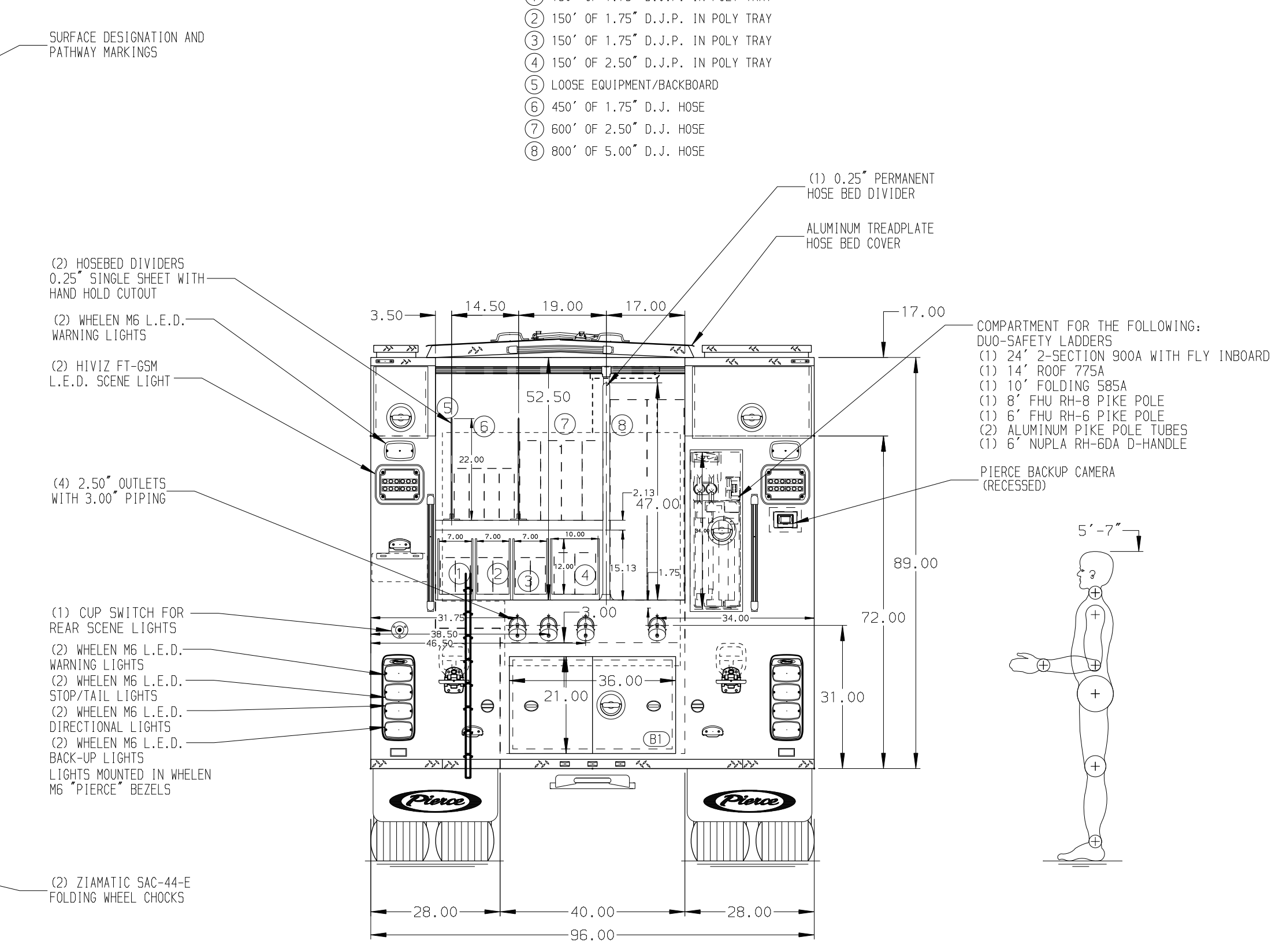
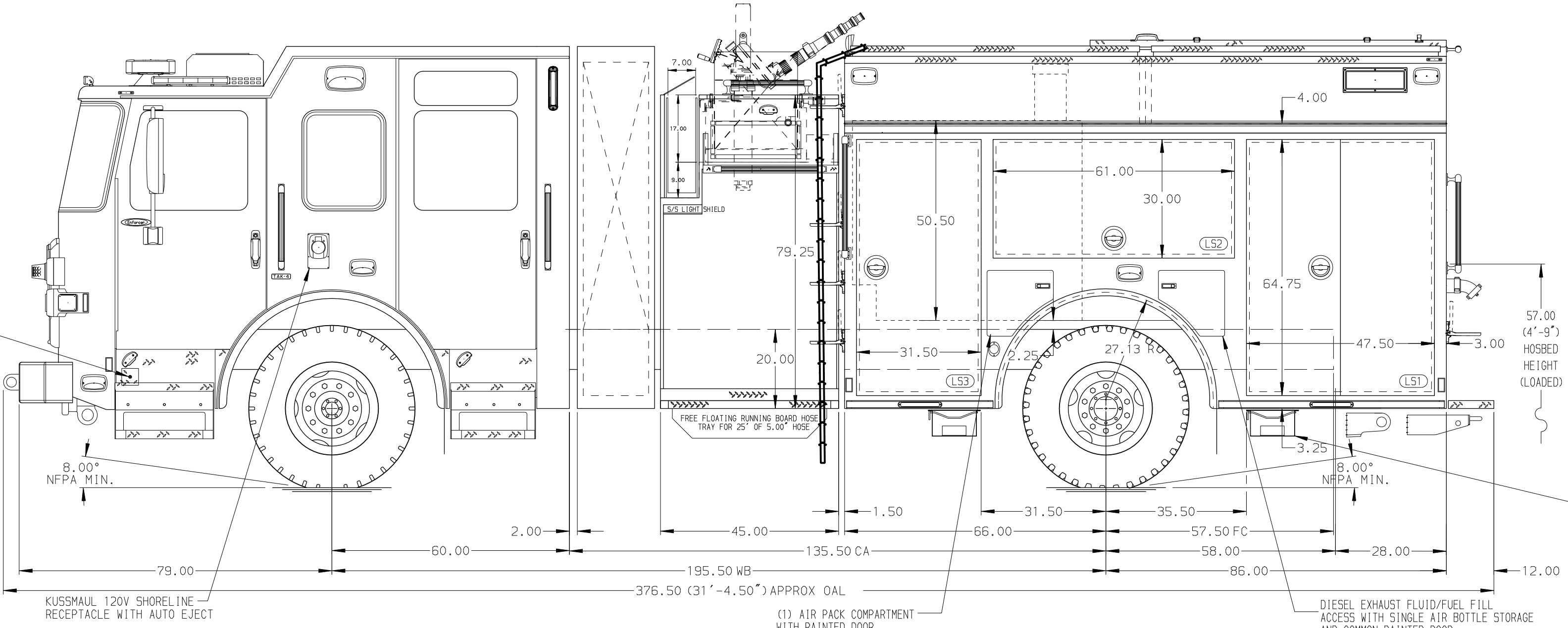


- HOSEBED CAPACITIES
- 150' OF 1.75" D.J.P. IN POLY TRAY
 - 150' OF 1.75" D.J.P. IN POLY TRAY
 - 150' OF 1.75" D.J.P. IN POLY TRAY
 - 150' OF 2.50" D.J.P. IN POLY TRAY
 - LOOSE EQUIPMENT/BACKBOARD
 - 450' OF 1.75" D.J. HOSE
 - 600' OF 2.50" D.J. HOSE
 - 800' OF 5.00" D.J. HOSE



ALUMINUM BODY

SIDE ROLL AND FRONTAL IMPACT PROTECTION

NOTE
DIMENSIONS SHOWN ARE APPROXIMATE AND ARE SUBJECT TO MINOR DEVIATIONS AS MAY OCCUR OR BE NECESSARY IN CONSTRUCTION. MINOR DETAILS NOT SHOWN.

- DUAL L.E.D. LIGHT STRIPS LOCATED IN HOSE BED

REV	DATE	BY	CH	ENFORCER
16DEC24	JAM	PHA		CHASSIS DATA
09SEP24	JAM	PHA		MAKE
25JUL24	JAM	NPE		PIERCE
18JUL24	JAM	NPE		MODEL
20MAY24	JAM	NPE		

		JOB NO.	40617
		SCALE	DATE
TITLE 2000-D-500P, 500G W OG F, 152" FDLR LS & FH FD RS VOLTERRA, HATCH COMPTS, HOSE BED COVER, HOSE REEL	FOR REDMOND, CITY OF REDMOND, WASHINGTON	DRAWN BY	JAM 28NOV23
		CHECKED BY	CDU 28NOV23
DWG NO.	40617AD-SH1	SHEET SIZE	SHEET NO.
		D	1 OF 2