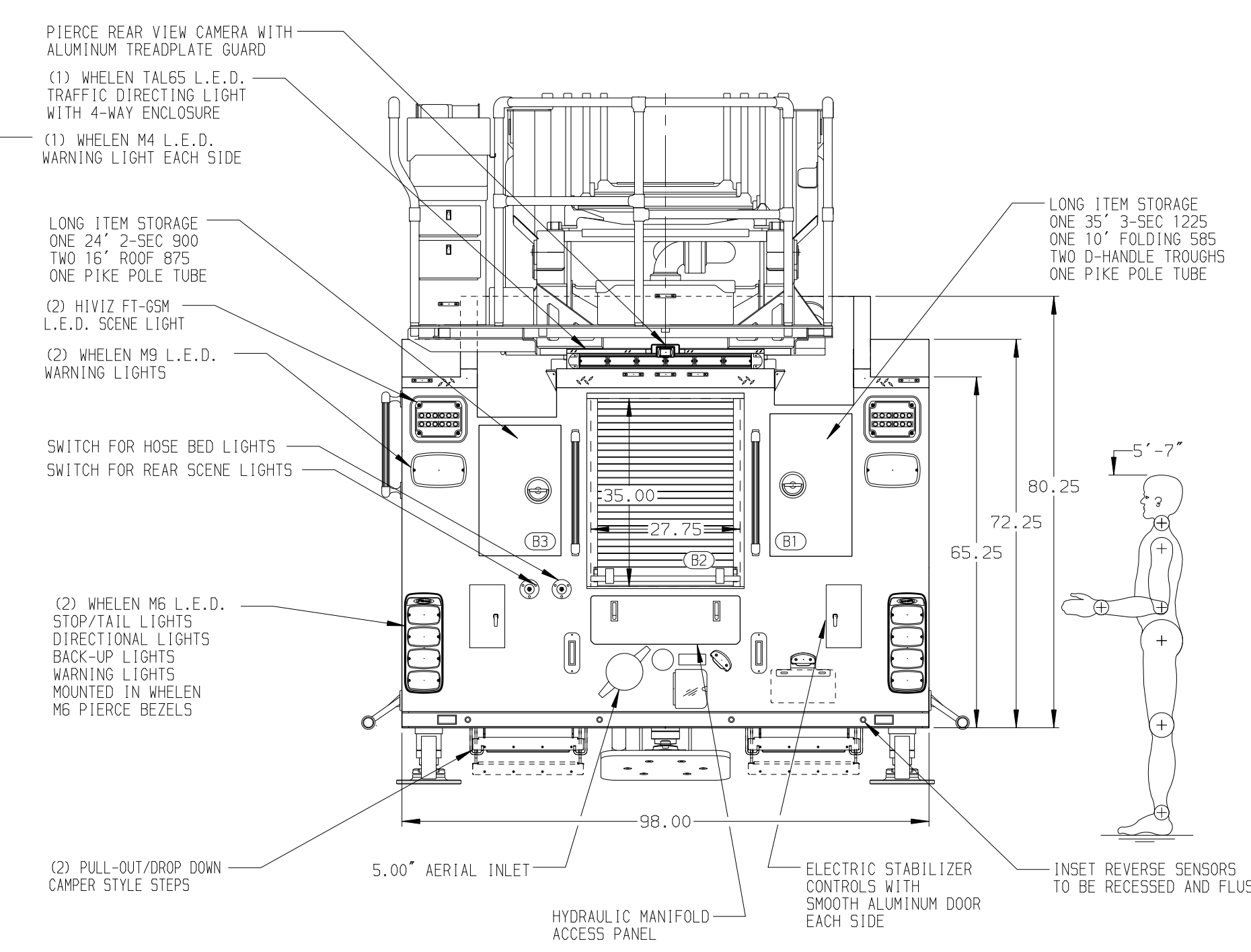


BODY	WATER TANK
107' ASL Aluminum Body	500 Gallon Poly Water Tank
COMPT, LEFT SIDE FRONT	Foam System
Full Height Rollup/Lift Forward	External Foam System
COMPT, LEFT SIDE REAR	Foam Cell
Full Height Rollup Rearward	25 Gallon Foam Cell, Non-Reduced Water
COMPT, RIGHT SIDE FRONT	
Full Height Rollup/Lift Forward	
COMPT, RIGHT SIDE REAR	
Full Height Rollup Rearward-Large Rear	



CHASSIS Enforcer Chassis 450 HP Cummins L9 Engine	CAB 7000 Enforcer Cab BUMPER 22" Painted Steel	AXLE, FRONT, CUSTOM 23,000 Lb Dana Axle AXLE, REAR 33,500 Lb Meritor Axle	TRANSMISSION Allison 5th Gen, 3000 EV5 P	PUMPHOUSE 52" Control Zone Side Mount PUMP 1500 GPM Hole QMAX	CROSSLAYS, 1.50" (2) 1.50" Std Cap-With Rollers DEADLAY, 2.50" (1) 2.50" Deadlay 250' Capacity	SPEEDLAYS Speedlays Not Required GENERATOR Generator Not Required	-	-
--	---	--	--	--	---	--	---	---

NOTE
DIMENSIONS SHOWN ARE APPROXIMATE AND ARE SUBJECT TO MINOR DEVIATIONS AS MAY OCCUR OR BE NECESSARY IN CONSTRUCTION. MINOR DETAILS NOT SHOWN.

- BATTERY CHARGER LOCATED BEHIND DRIVER SEAT
- L.E.D. LIGHT STRIPS LOCATED IN HOSE BED PER ORDER
- TRIDENT FOLDING STEPS ON AERIAL DEVICE
- TECNO L.E.D. RING STYLE LIGHTING ON AERIAL LADDER SECTIONS PER SHOP ORDER
- FIRE RESEARCH 3-WAY INTERCOM SYSTEM BETWEEN AERIAL TIP, PUMP PANEL AND TURNTABLE
- LIFTING EYE ROPE RESCUE ATTACHMENT AT AERIAL TIP
- 1500 GPM HIGH FLOW WATERWAY
- ONE 120V RECEPTACLE IN CAB PER ORDER
- AERIAL LIMITED RETRACTION NOT REQUIRED
- AIR OUTLET WITH SHUT OFF VALVE LOCATED AT DRIVERS SIDE PUMP PANEL PER ORDER

- TREADPLATE ON CAB ROOF PER ORDER

				CHASSIS DATA	TITLE	107' ASCENDANT AERIAL LADDER AND BODY ASSEMBLY	JOB NO.	40585 01-03
				PIERCE	FOR	MIAMI DADE FIRE RESCUE MIAMI, FL	SCALE	1:24
				MODEL	DWG NO.	40585AD-SH1	DATE	
REV	DATE	BY	CH	ENFORCER			DRAWN BY	LWE
							CHECKED BY	JBL
							SHEET SIZE	D
							SHEET NO.	1 OF 2