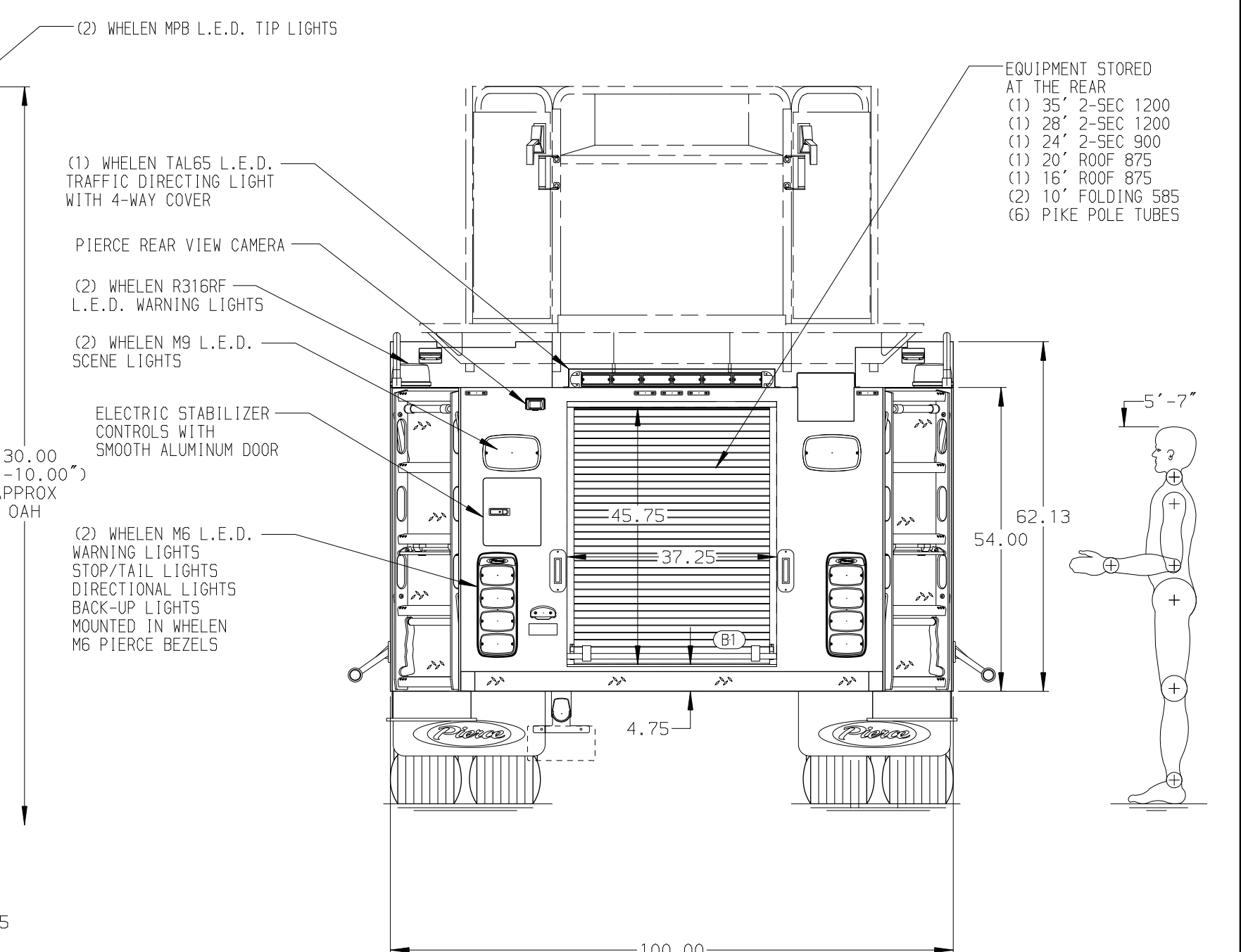
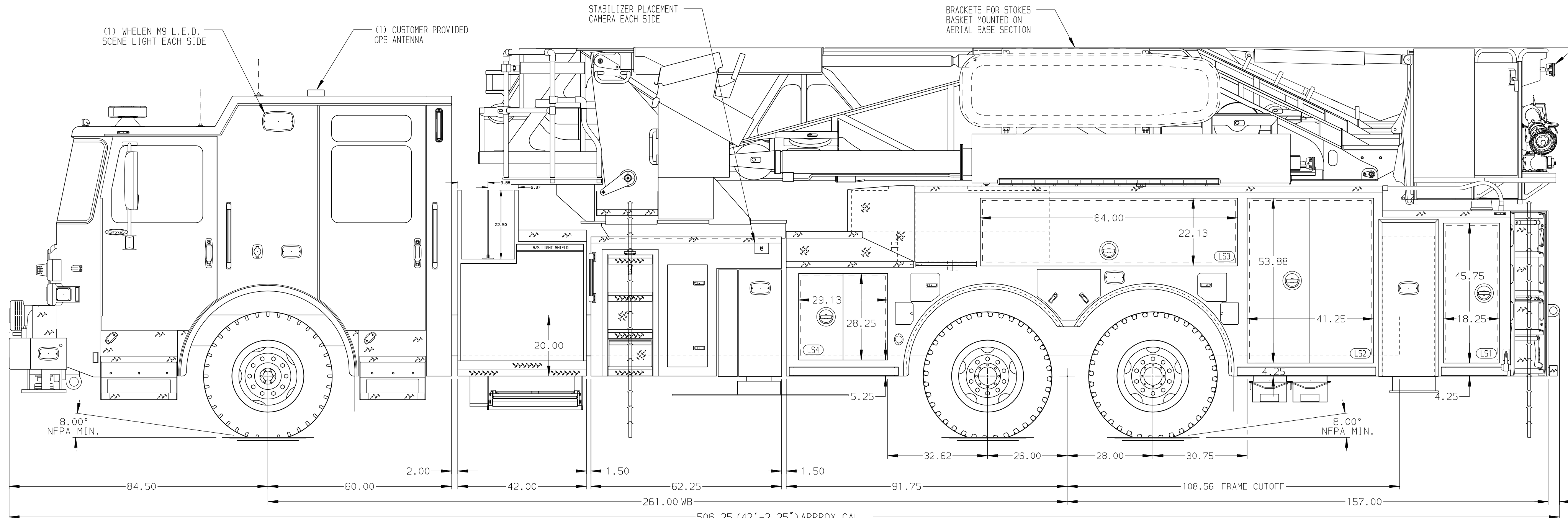
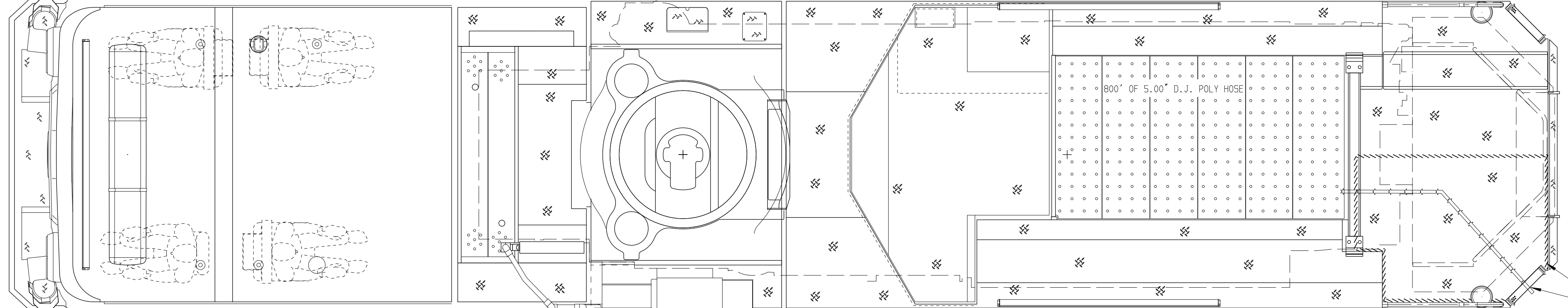


BODY 100' Ascendant Aerial Tower Alum Body COMPT, LEFT SIDE Full Height Lap Doors COMPT, RIGHT SIDE Full Height Lap Doors	WATER TANK 300 Gallon Poly Water Tank Foam System Foam System Not Required Foam Cell Foam Cell Not Required
---	---



CHASSIS Enforcer Chassis ENGINE 525 HP Cummins X12 Engine	CAB 6010 Enforcer Cab BUMPER 15\" Painted Aluminum	AXLE, FRONT, CUSTOM 23,000 Lb Dana Axle AXLE, REAR 54,000 Lb Meritor Axle	TRANSMISSION Allison 6th Gen, 4000 EV5 P	PUMPHOUSE 42\" Control Zone Side Mount PUMP 1500 GPM Waterous S100	CROSSLAYS, 1.50\" (1) 1.50\", 200' of 1.75\" Hose CROSSLAYS, 2.50\" (1) 2.50\", 200' of 2.50\" Hose	SPEEDLAYS Speedlays Not Required GENERATOR Generator Not Required	SAFETY Side Roll and Frontal Impact Protection	MANUFACTURING INC.	JOB NO. 40366 SCALE 1:24 DATE
NOTE DIMENSIONS SHOWN ARE APPROXIMATE AND ARE SUBJECT TO MINOR DEVIATIONS AS MAY OCCUR OR BE NECESSARY IN CONSTRUCTION. MINOR DETAILS NOT SHOWN.									DRAWN BY ANZ CHECKED BY NAK SHEET SIZE D SHEET NO. 1 OF 1
1. SHORELINE RECEPTACLE WITH KUSSMAUL SUPER AUTO-EJECT LOCATED ON DRIVER SIDE CAB CORNER 2. AIR INLET WITH DISCONNECT COUPLING IN THE DRIVER SIDE STEPWELL 3. BATTERY CHARGER/COMPRESSOR LOCATED BEHIND DRIVER SEAT 4. BATTERY CHARGE INDICATOR LOCATED PER ORDER 5. NINE ADJUSTABLE SHELVES LOCATED IN COMPARTMENTS PER ORDER 6. ONE FLOOR MOUNTED SLIDE-OUT TRAY LOCATED IN COMPARTMENT PER ORDER 7. ONE ALUMINUM SWING-OUT TOOLBOARD LOCATED IN COMPARTMENT PER ORDER 8. ONE VERTICAL PARTITION LOCATED IN COMPARTMENT PER ORDER 9. TECNO RING LIGHTING AT AERIAL DEVICE 10. DC POWER TO AERIAL TIP		11. TWO WHELEN PSL18 L.E.D. LIGHTS UNDER BASKET CORNER STEPS 12. ONE PIERCE CAMERA LOCATED AT PASSENGER SIDE PUMP PANEL FOR LINING UP HYDRANT		13. THREE RECEPTACLES LOCATED PER ORDER 14. 3-in-1 LYFECOMBO BRACKETS AT AERIAL BASKET		CHASSIS DATA MAKE PIERCE MODEL ENFORCER		TITLE 100' ASCENDANT AERIAL TOWER AND BODY ASSEMBLY 300 GALLON WATER TANK FOR COUNTRYSIDE FIRE PROTECTION DISTRICT VERNON HILLS, IL DWG NO. 40366AD	19JUN24 ANZ CLM REV DATE BY CH