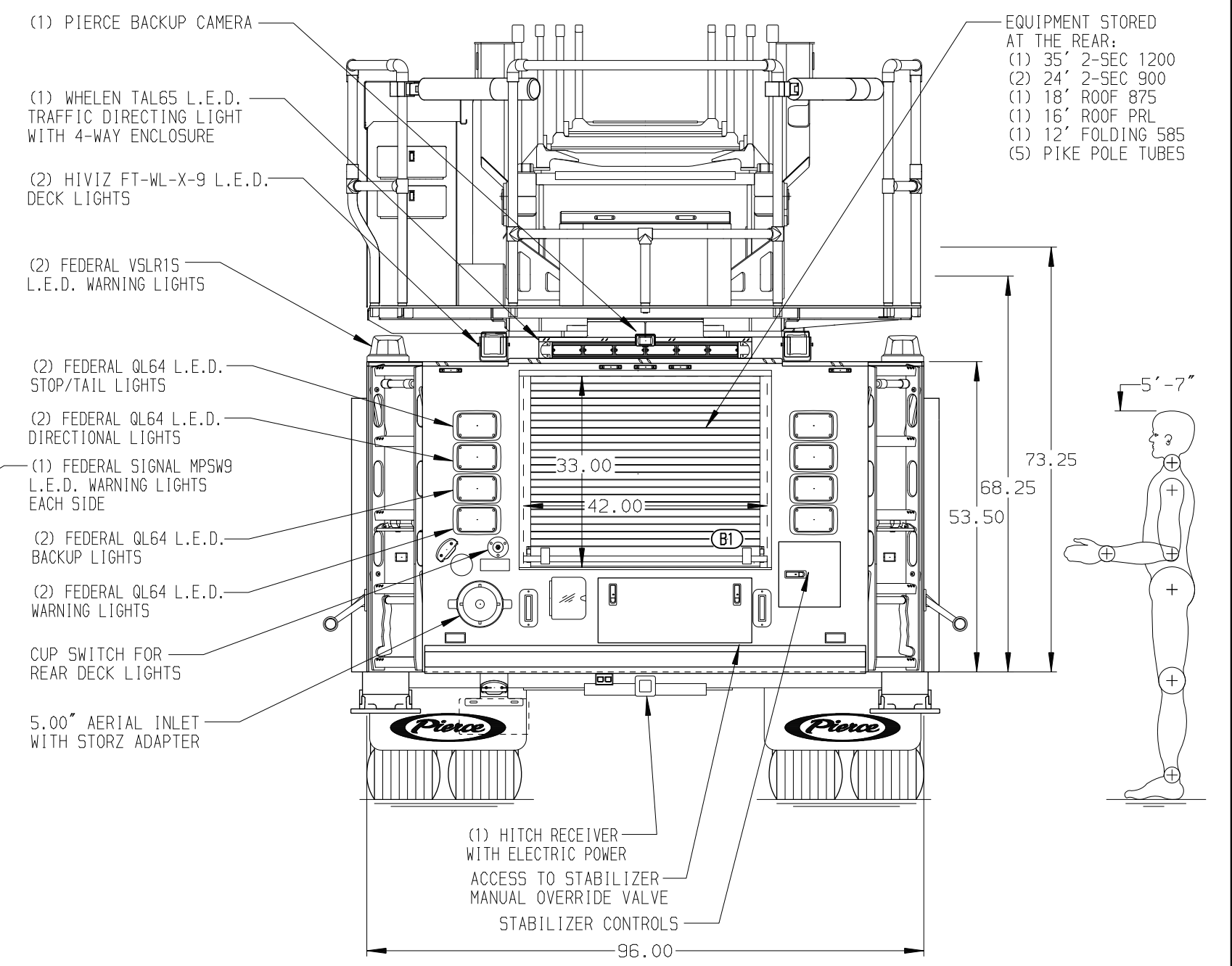
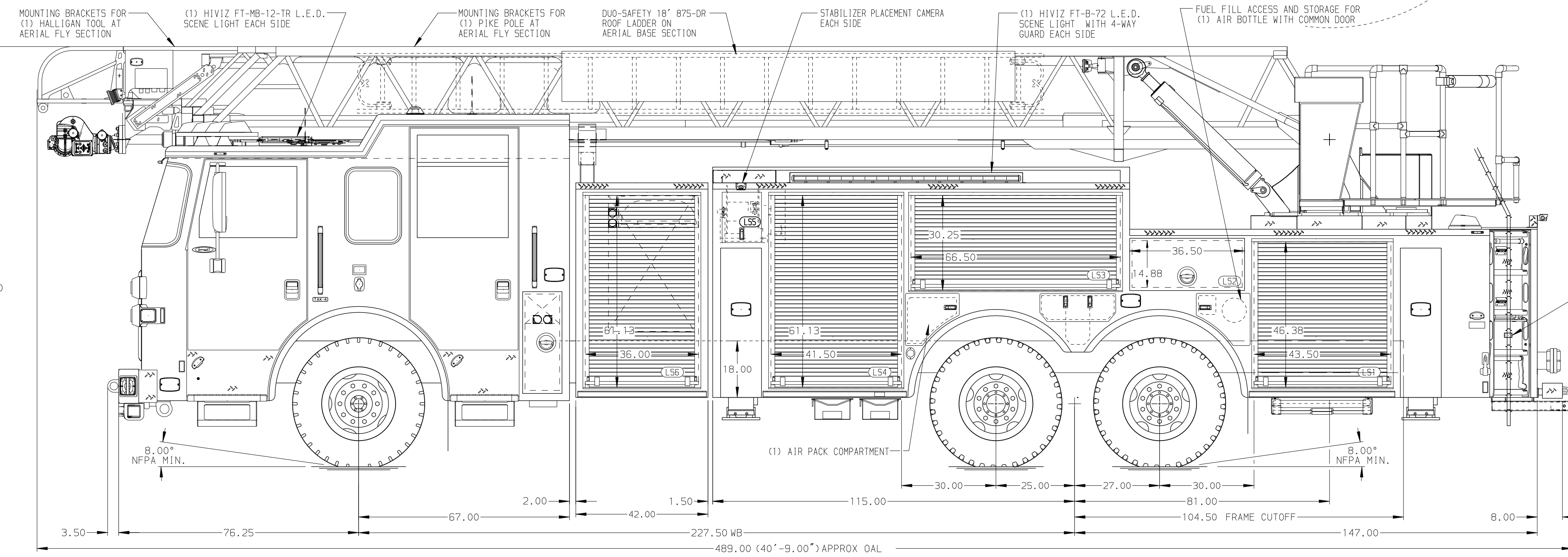


**BODY**  
 107' ASL Tandem Axle Aluminum Body  
**COMPT, LEFT SIDE FRONT**  
 FH/FD RollUp Forward w/o Chute  
**COMPT, LEFT SIDE REAR**  
 FH/FD RollUp Rearward  
**COMPT, RIGHT SIDE FRONT**  
 FH/FD RollUp Forward w/o Chute  
**COMPT, RIGHT SIDE REAR**  
 FH/FD RollUp Rearward



<b>CHASSIS</b> Arrow XT Chassis <b>ENGINE</b> 500 HP Cummins X12 Engine	<b>CAB</b> 6710 Notched Arrow XT Cab <b>BUMPER</b> Non-Extended Stainless Steel	<b>AXLE, FRONT, CUSTOM</b> 22,800 Lb TAK-4 Axle <b>AXLE, REAR</b> 48,000 Lb Meritor Axle	<b>TRANSMISSION</b> Allison 6th Gen, 4500 EVS P <b>GENERATOR</b> Harrison MCR 10kW Hydraulic	<b>COMPARTMENT-NO PUMP</b> 42" Wide w/RollUp Door	<b>SAFETY</b> Side Roll and Frontal Impact Protection
--	--	---	---	--	---

**Pierce MANUFACTURING INC.**

JOB NO. 40273  
 SCALE 1:24  
 DATE

**NOTE**  
 DIMENSIONS SHOWN ARE APPROXIMATE AND ARE SUBJECT TO MINOR DEVIATIONS AS MAY OCCUR OR BE NECESSARY IN CONSTRUCTION. MINOR DETAILS NOT SHOWN.

- NO LIMITED RETRACTION REQUIRED
- SHORELINE RECEPTACLE WITH KUSSMAUL SUPER AUTO-EJECT LOCATED ON DRIVER SIDE OF THE CAB
- AIR INLET WITH DISCONNECT COUPLING IN THE DRIVER SIDE STEPIELL
- BATTERY CHARGER/COMPRESSOR LOCATED BEHIND DRIVER'S SEAT
- BATTERY CHARGE INDICATOR LOCATED ON DRIVER SIDE OF CAB
- FOUR POLY TOOL BOXES LOCATED IN COMPARTMENTS PER ORDER
- TWO FLOOR MOUNTED SLIDE-OUT TRAYS LOCATED IN COMPARTMENTS PER ORDER
- ONE CIRCUIT BREAKER PANEL LOCATED PER ORDER
- FOUR SLIDE-OUT TRAYS LOCATED IN COMPARTMENTS PER ORDER
- ONE TILT/SLIDE-OUT TRAYS LOCATED IN COMPARTMENT PER ORDER
- ONE FLOOR MOUNTED TWO-WAY SLIDE-OUT TRAY LOCATED IN COMPARTMENT PER ORDER
- TWO ALUMINUM SWING-OUT TOOLBOARDS LOCATED IN COMPARTMENTS PER ORDER
- ONE ALUMINUM TOOLBOARD ADDED TO SLIDE-OUT TRAY LOCATED IN COMPARTMENT PER ORDER
- ONE VERTICAL PARTITION LOCATED IN COMPARTMENTS PER ORDER
- EIGHT RECEPTACLES LOCATED PER ORDER
- TURF TIRE MATTING LOCATED ON COMPARTMENT FLOORS & SHELVES PER ORDER
- ONE EQUIPMENT RACK LOCATED IN COMPARTMENT PER ORDER
- ONE AIR BAG RACK LOCATED IN COMPARTMENT PER ORDER
- TWO FLOOR EXTENSIONS LOCATED IN COMPARTMENTS PER ORDER
- FOUR EXTINGUISHER STORAGE BINS LOCATED IN COMPARTMENTS PER ORDER
- TECNO RUNG LIGHTING AT AERIAL DEVICE
- 1.00" LOWEDED AERIAL PEDESTAL
- LIFTING EYE ROPE RESCUE ATTACHMENT AT AERIAL TIP
- 1500 GPM HIGH FLOW WATERWAY

CHASSIS DATA	TITLE	107' ASCENDANT AERIAL LADDER AND BODY ASSEMBLY NO PUMP/NO TANK	DRAWN BY	ANZ	17ARP24
MAKE	FOR	WOODBURY FIRE DEPARTMENT HIGHLAND MILLS, NY	CHECKED BY	NAK	17APR24
MODEL	DWG NO.	40273AD	SHEET SIZE	D	SHEET NO. 1 OF 1