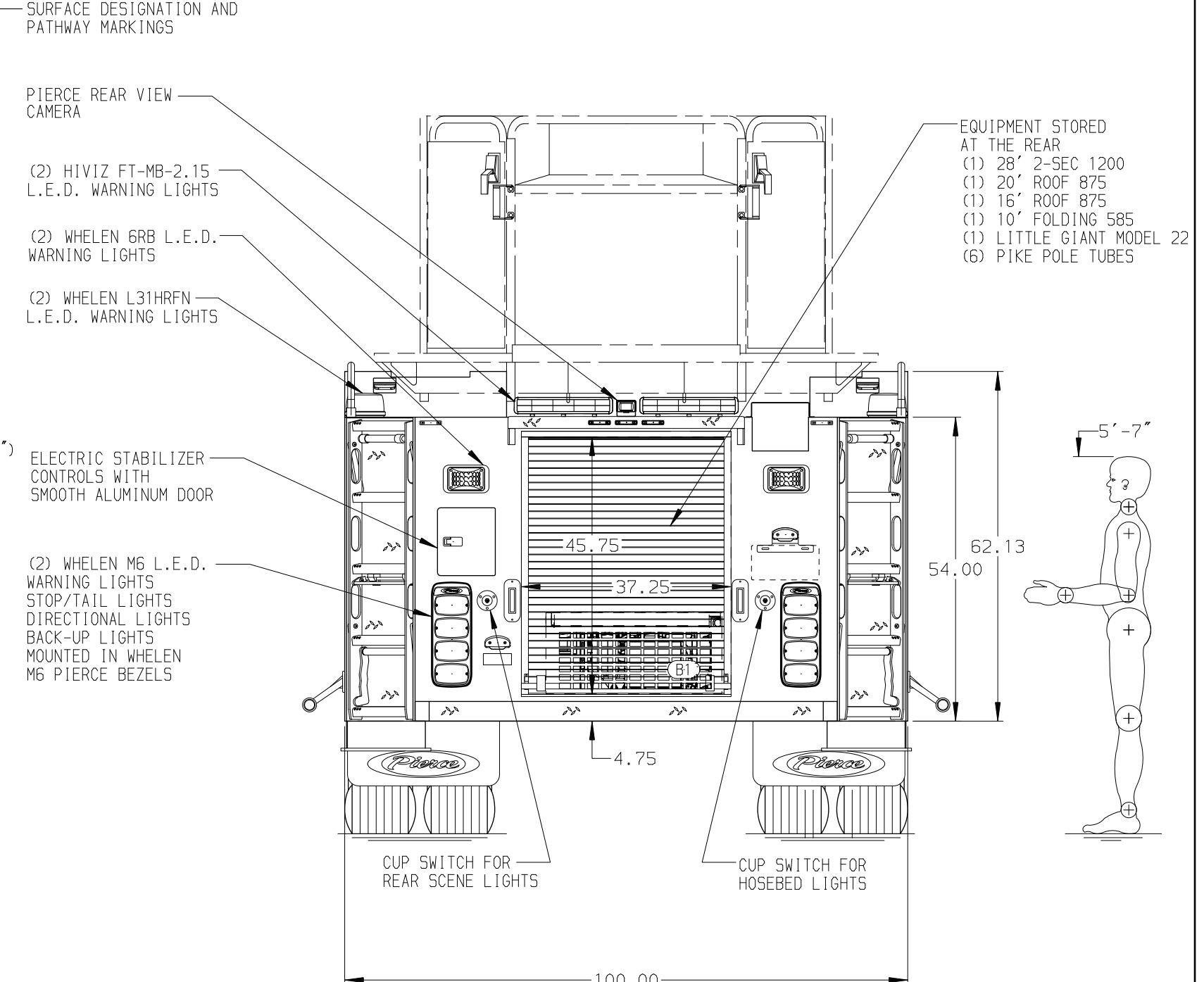
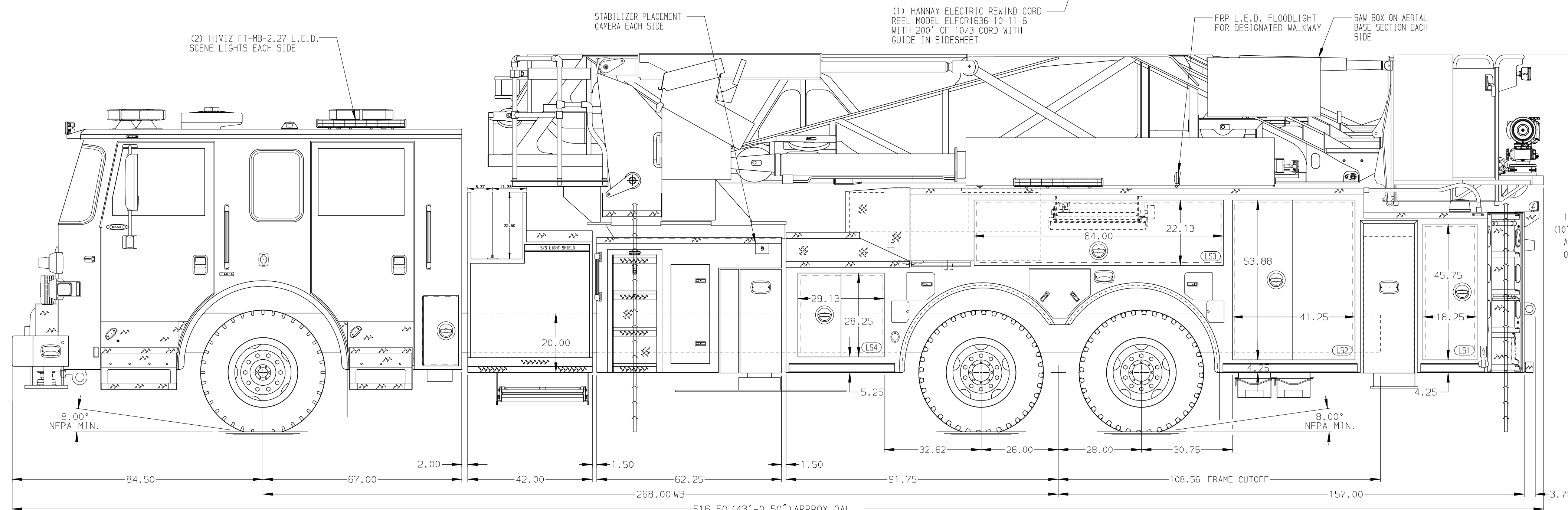
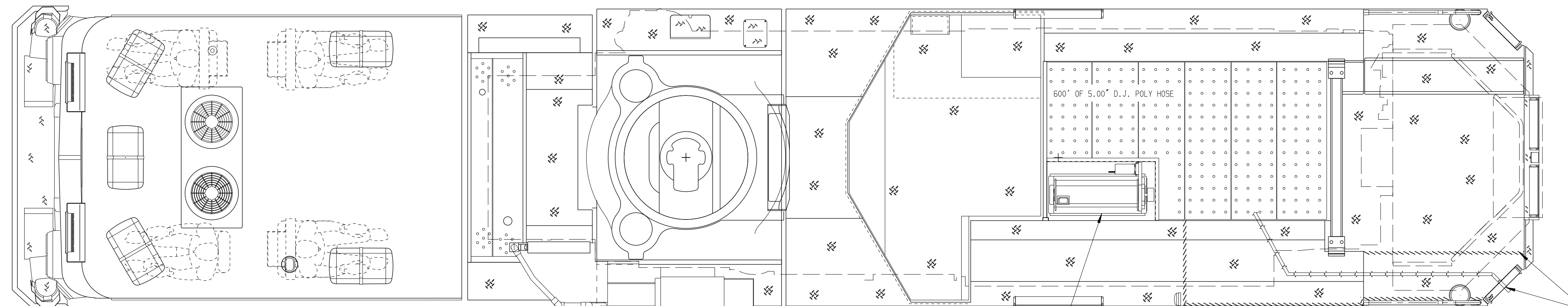


BODY 100' Ascendant Aerial Tower Alum Body COMPT, LEFT SIDE Full Height Lap Doors COMPT, RIGHT SIDE Full Height Lap Doors	WATER TANK 300 Gal/Lon Poly Water Tank Foam System Foam System Not Required Foam Cell Foam Cell Not Required
---	--



CHASSIS Arrow XT Chassis ENGINE 605 HP Cummins X15 Engine	CAB 6700 Arrow XT Cab BUMPER 15" Painted Aluminum	AXLE, FRONT, CUSTOM 24,000 Lb TAK-4 Axle AXLE, REAR 54,000 Lb Meritor Axle	TRANSMISSION Allison 6th Gen, 4500 EV5 P	PUMPHOUSE 42" Control Zone Side Mount PUMP 2000 GPM Waterous S100	CROSSLAYS, 1.50" (1) 1.50", 200' of 1.75" Hose CROSSLAYS, 2.50" (1) 2.50", 200' of 2.50" Hose	SPEEDLAYS Speedlays Not Required GENERATOR Harrison 6kW MID6.0 Hydraulic	SAFETY Side Roll and Frontal Impact Protection		JOB NO. 40272 SCALE 1:24 DATE DRAWN BY ANZ 17APR24 CHECKED BY NAK 26APR24 SHEET SIZE D SHEET NO. 1 OF 1		
NOTE DIMENSIONS SHOWN ARE APPROXIMATE AND ARE SUBJECT TO MINOR DEVIATIONS AS MAY OCCUR OR BE NECESSARY IN CONSTRUCTION. MINOR DETAILS NOT SHOWN.		1. SHORELINE RECEPTACLE WITH KUSSMAUL SUPER AUTO-EJECT LOCATED ON DRIVER SIDE OF THE CAB 2. AIR INLET WITH DISCONNECT COUPLING IN THE DRIVER SIDE STEPWELL 3. BATTERY CHARGER LOCATED PER ORDER 4. BATTERY CHARGE INDICATOR LOCATED NEAR DRIVER SEAT RISER WITH BRACKET 5. SEVEN ADJUSTABLE SHELVES LOCATED IN COMPARTMENTS PER ORDER 6. ONE FLOOR MOUNTED SLIDE-OUT TRAY LOCATED IN COMPARTMENT PER ORDER 7. ONE RECEPTACLE LOCATED ON PUMP PANEL 8. SIX WHELEN SV3 L.E.D. LIGHTS UNDER BASKET 9. ONE ALUMINUM SLIDE-OUT TOOLBOARD LOCATED IN COMPARTMENT PER ORDER 10. ONE CIRCUIT BREAKER PANEL LOCATED PER ORDER		11. 3-in-1 LYFECOMBO BRACKETS AT AERIAL BASKET 12. NON-RAISED AERIAL PEDESTAL		MAXIMUM O.A.H. 10'-9.00" (129.00")					CHASSIS DATA TITLE 100' ASCENDANT AERIAL TOWER AND BODY ASSEMBLY FOR HYDE PARK FIRE DEPARTMENT HYDE PARK, NY DWG NO. 40272AD