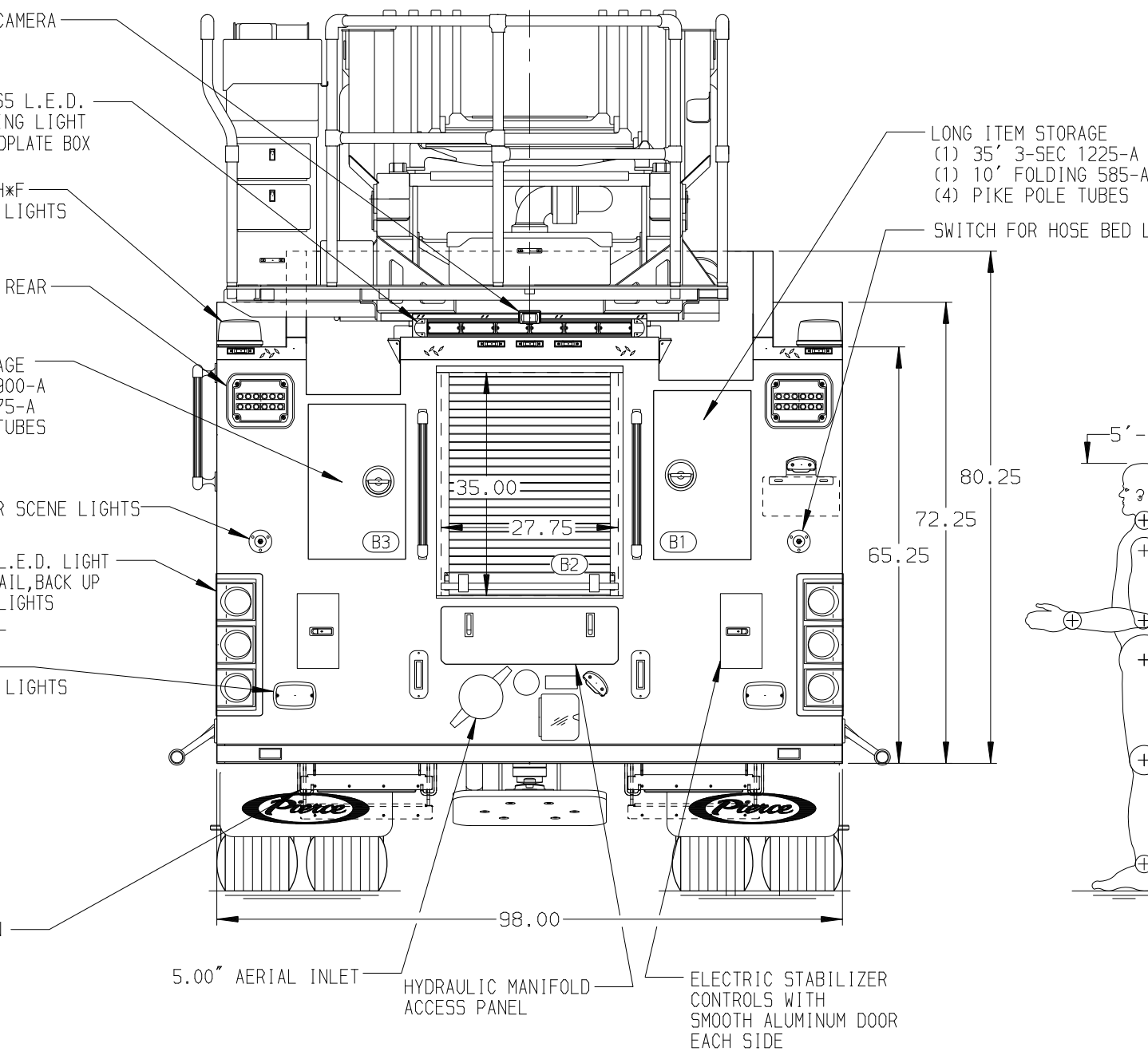


BODY	WATER TANK
107' ASL Aluminum Body	500 Gallon Poly Water Tank
COMPT, LEFT SIDE FRONT	Foam System
Full Height RollUp Forward	Foam System Not Required
COMPT, LEFT SIDE REAR	Foam Cell
Full Height RollUp Rearward	Foam Cell Not Required
COMPT, RIGHT SIDE FRONT	
Full Height RollUp Forward	
COMPT, RIGHT SIDE REAR	
Full Height RollUp Rearward	



CHASSIS	CAB	AXLE, FRONT, CUSTOM	TRANSMISSION	PUMPHOUSE	CROSSLAYS, 1.50"	SPEEDLAYS	SAFETY	Pierce MANUFACTURING INC.		JOB NO.
Enforcer Chassis	7010 Enforcer Notched Cab	22,800 Lb TAK-4 Axle	Allison 6th Gen, 4500 EV5 P	52" Control Zone Side Mount	(2) 1.50" Standard Capacity	Speedlays Not Required	Side Roll and	Pierce MANUFACTURING INC.		40224
ENGINE	BUMPER	AXLE, REAR		PUMP	CROSSLAYS, 2.50"	GENERATOR	Frontal Impact Protection	TITLE		SCALE
525 HP Cummins X12 Engine	19" Extended Painted Steel	33,500 Lb Meritor Axle		2000 GPM Waterous CSU	(1) 2.50" Standard Capacity	Generator Not Required		DATA	107' ASCENDANT AERIAL LADDER AND BODY ASSEMBLY	1:24
								FOR	500 GALLON WATER TANK	DATE
								MODEL	VILLAGE OF SPRING VALLEY	11JAN24
								ENFORCER	SPRING VALLEY, NY	CHECKED BY
										NAK
										12JAN24
										SHEET SIZE
										D
										SHEET NO.
										1 OF 1