

PUMPER BODY
Medium Aluminum 2nd Gen Pumper

CHASSIS
Enforcer Chassis

CHASSIS AXLE, FRONT, CUSTOM
18,000 Lb TAK-4 Axle

AXLE, REAR
24,000 Lb Meritor Axle

ENGINE
450 HP Cummins L9 Engine

TRANSMISSION
Allison 6th Gen, 3000 EVS P

BUMPER
19" Extended Pointed Underslung

CAB
7010 Enforcer Cab

BODY WATER TANK
500 Gallon New York Style Poly Tank

COMPT, PUMPER, REAR
30.75" FF Double Door Rear Compt

COMPT, PUMPER, LEFT SIDE
152" Lap Full Height Front & Rear FDLER Double Door Over Wheel

COMPT, PUMPER, RIGHT SIDE
152" Lap Full Height Front & Rear FDLER Double Door Over Wheel

FIRE SUPPRESSION PUMPHOUSE
52" Control Zone Side Mount

PUMP
2000 GPM Waterous CSU

CROSSLAYS, 1.50"
(2) 200' of 1.75" TruID Key Hose

CROSSLAYS, 2.50"
2.50" Crosslay Not Required

SPEEDLAYS
Speedlays Not Required

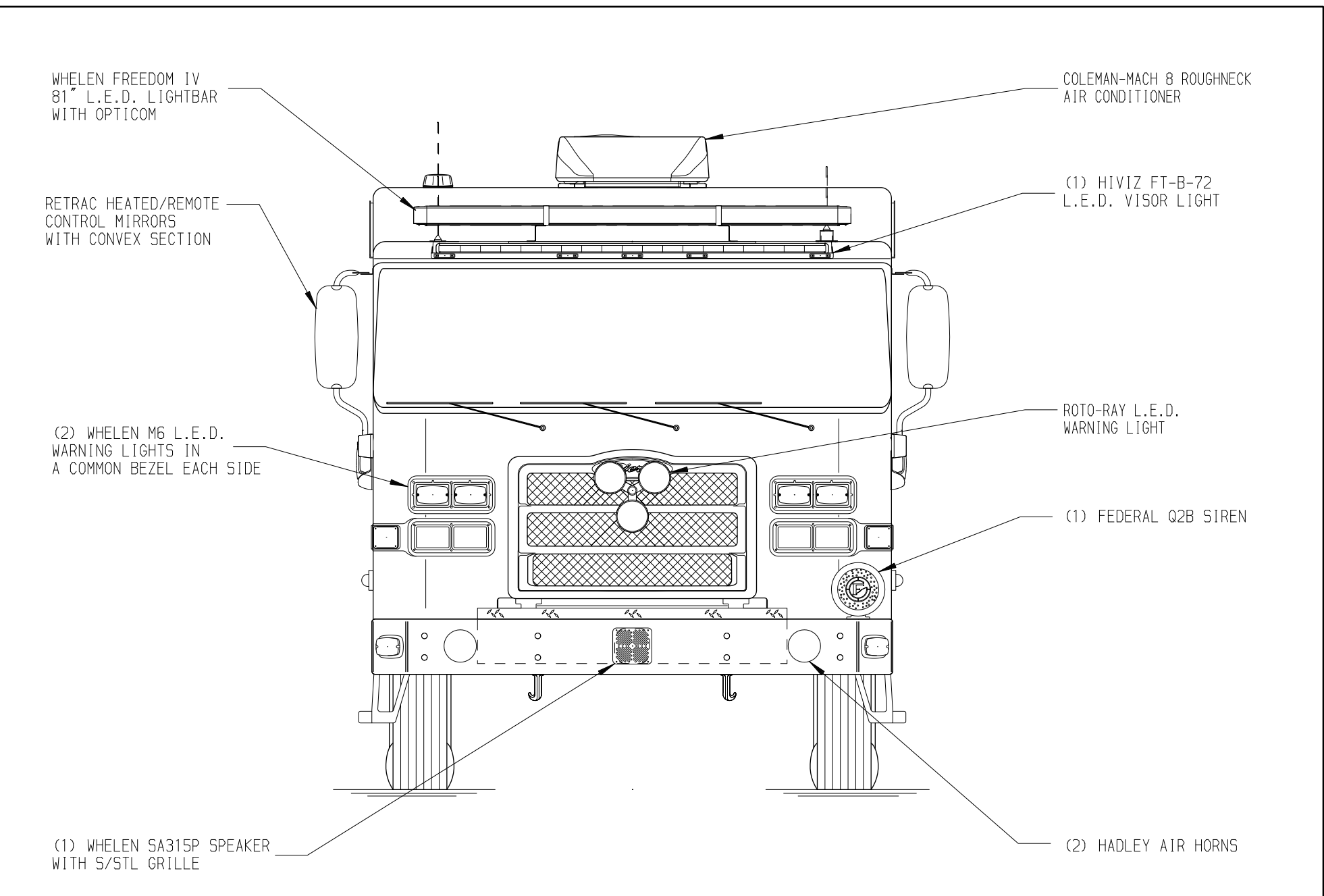
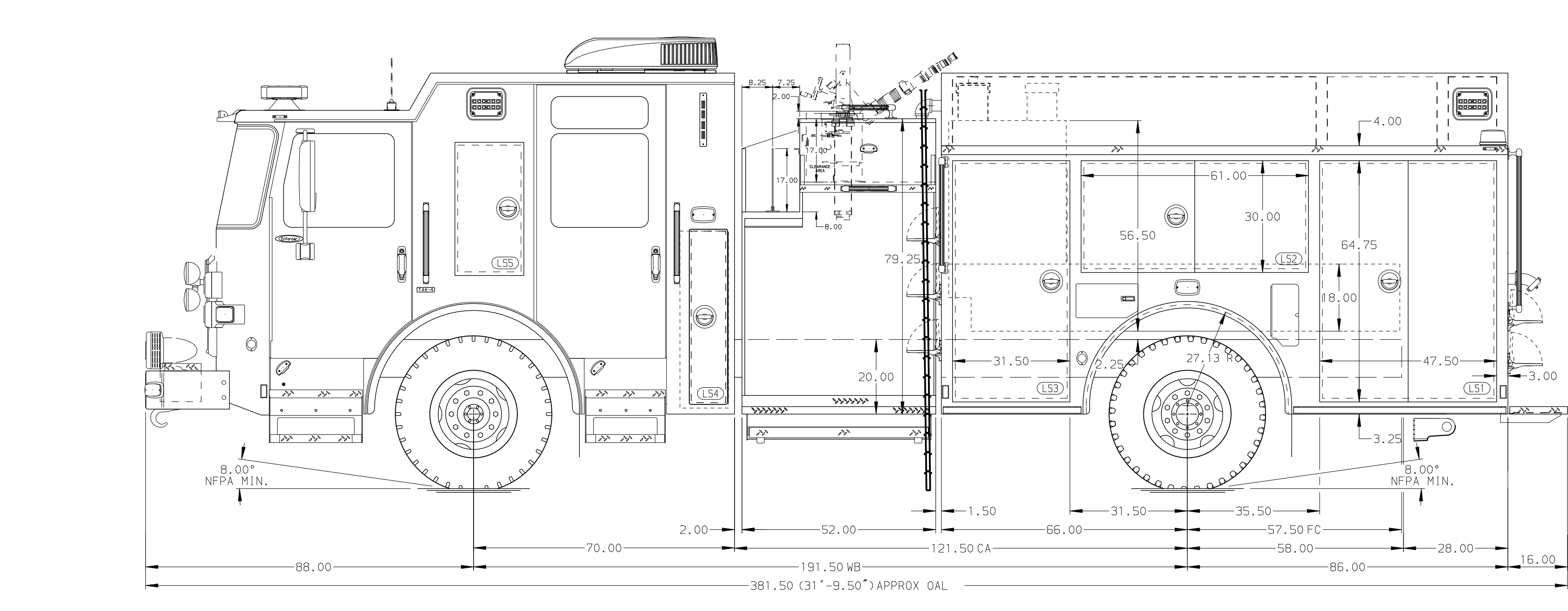
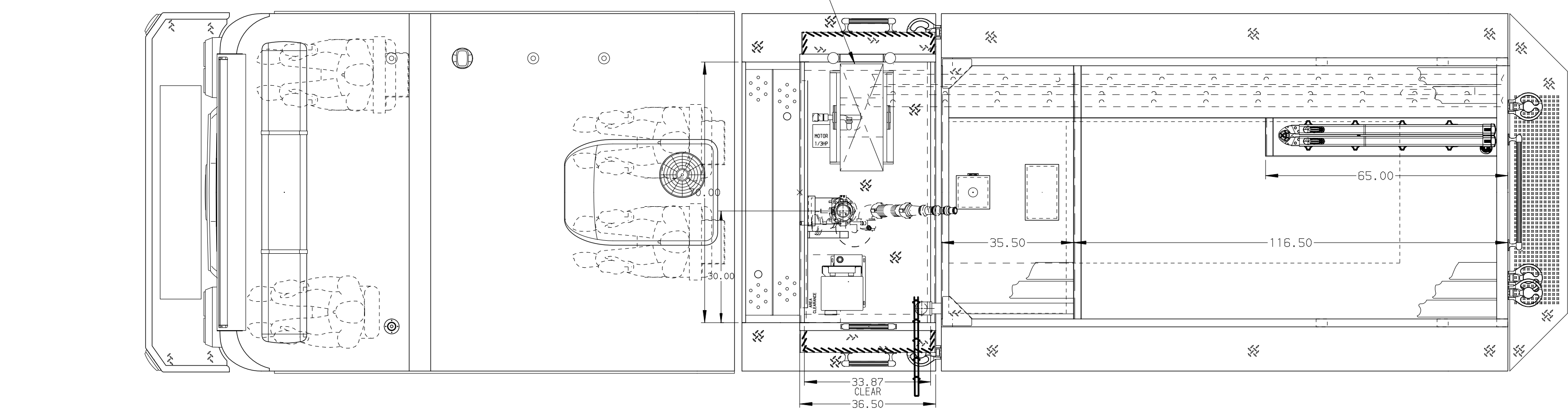
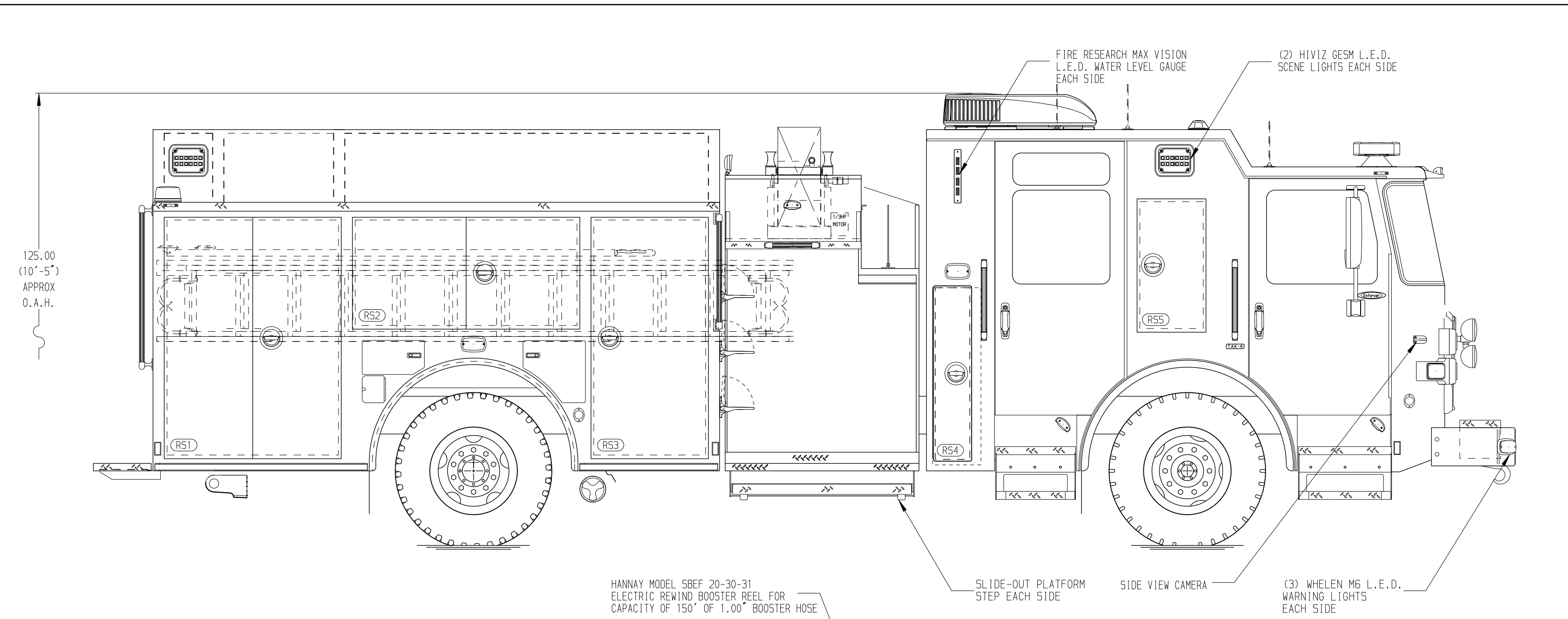
GENERATOR
Generator Not Required

Foam System
Husky 3 Single Agent Foam System

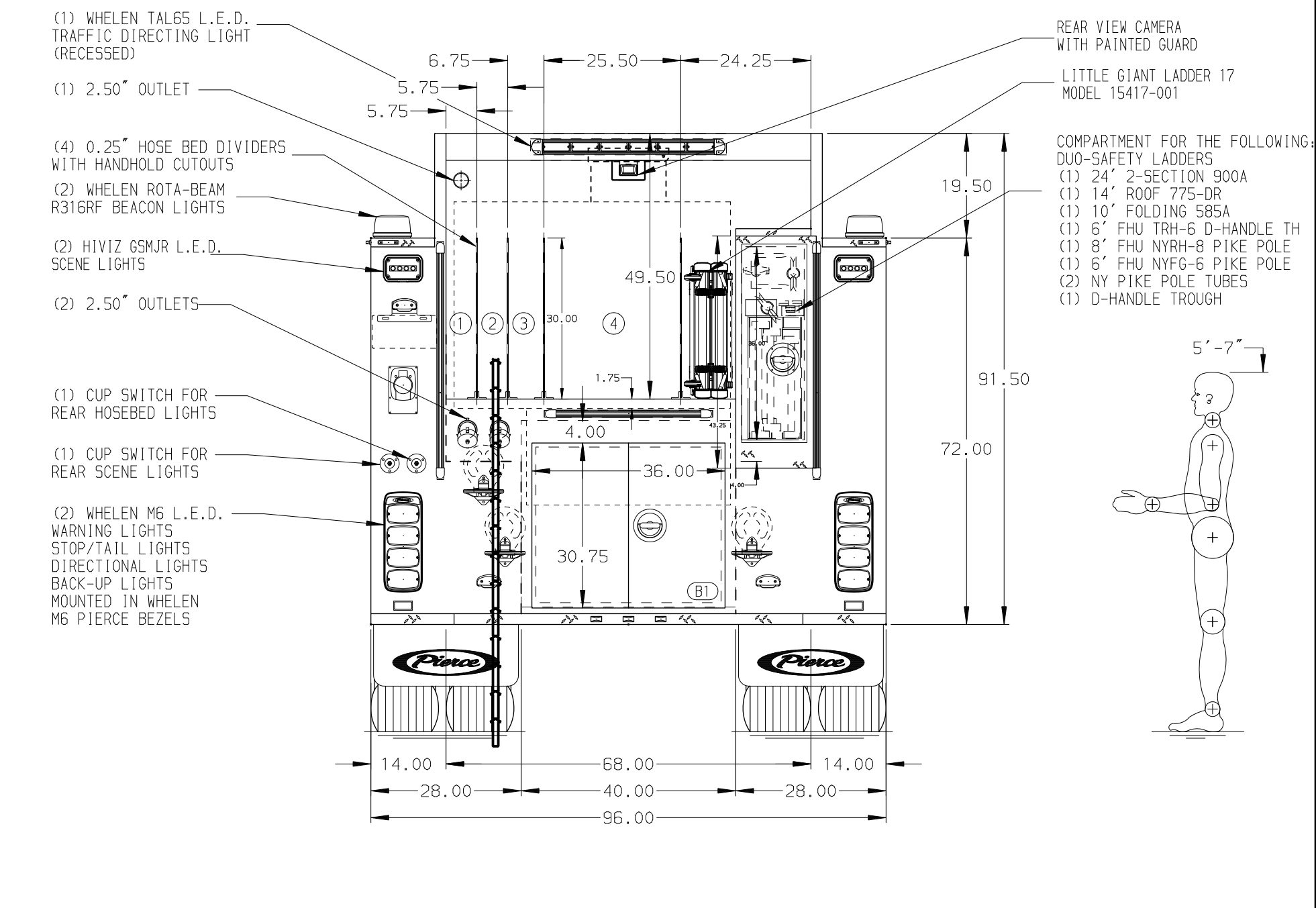
Foam Cell
20 Gallon Foam Cell, Not Reduced Water

NOTE
DIMENSIONS SHOWN ARE APPROXIMATE AND ARE SUBJECT TO MINOR DEVIATIONS AS MAY OCCUR OR BE NECESSARY IN CONSTRUCTION. MINOR DETAILS NOT SHOWN.

- ONE 1.50" OUTLET WITH 2.00" PIPING AND SWIVEL LOCATED PER SHOP ORDER
- SHORELINE RECEPTACLE WITH KUSSMALL SUPER AUTO-EJECT LOCATED PER SHOP ORDER
- AIR INLET WITH DISCONNECT COUPLING IN THE DRIVER SIDE STEPELL
- BATTERY CHARGER LOCATED PER SHOP ORDER
- EIGHT ADJUSTABLE SHELVES LOCATED PER SHOP ORDER
- ONE FLOOR MOUNTED SLIDE-OUT TRAY LOCATED PER SHOP ORDER
- TWO SLIDE-OUT TOOLBOARDS LOCATED PER SHOP ORDER
- AUTOMATIC TIRE CHAINS



HOSEBED CAPACITY	
BED 1	200' OF 2.50" D.J. POLY HOSE
BED 2	250' OF 2.50" D.J. POLY HOSE
BED 3	300' OF 3.00" D.J. POLY HOSE
BED 4	1000' OF 5.00" D.J. POLY HOSE



				JOB NO.	40122 01-04
				SCALE	DATE
TITLE Pierce Pumper Approval Drawing				DRAWN BY	JJB
				CHECKED BY	MMF
MAKE PIERCE				SHEET SIZE	SHEET NO.
				REV	DATE
MODEL ENFORCER				DWG NO. 40122AD	
				NO. 1 OF 1	