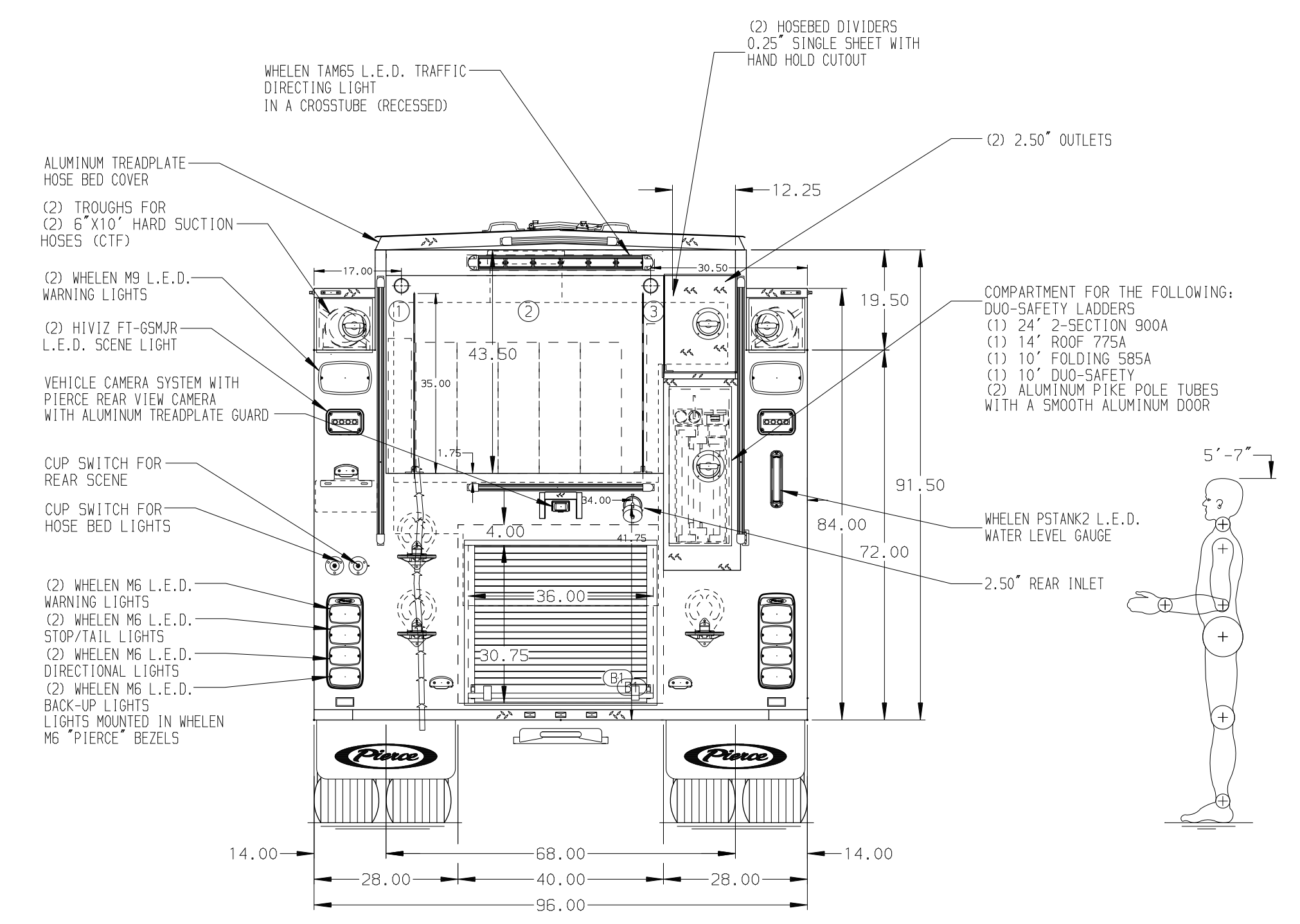
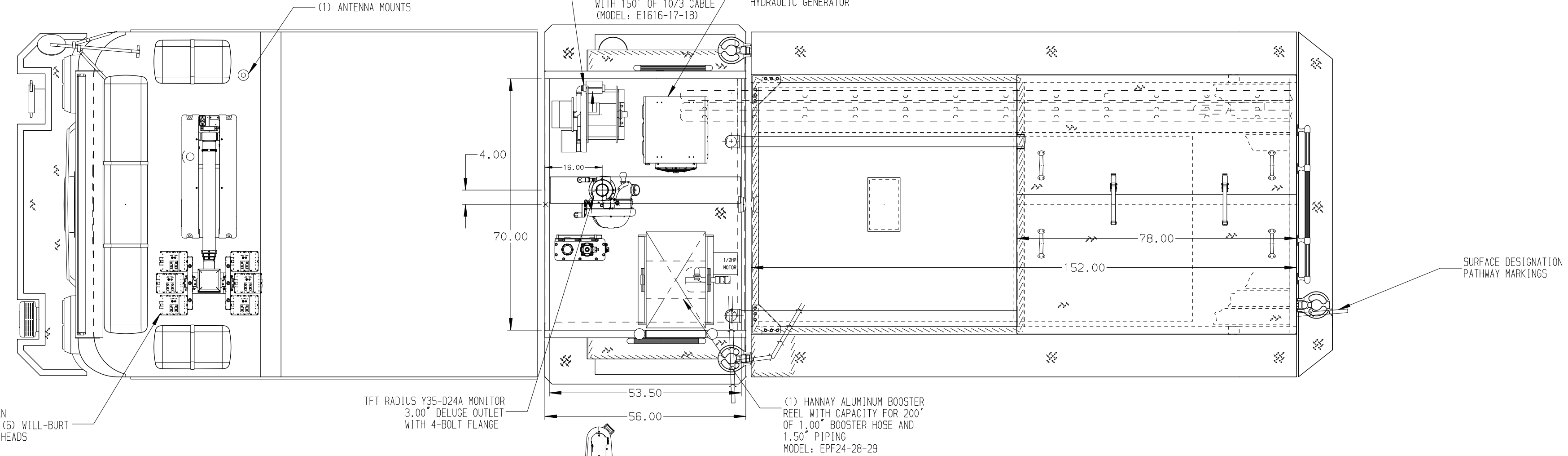


- HOSEBED CAPACITIES**
- ① 200' OF 2.50" D.J. POLY HOSE SINGLE STACK
  - ② 1000' OF 5.00" D.J. POLY HOSE
  - ③ 300' OF 1.75" D.J. POLY HOSE SINGLE STACK



ALUMINUM BODY      MAXIMUM O.A.L. 372"

**NOTE**  
DIMENSIONS SHOWN ARE APPROXIMATE AND ARE SUBJECT TO MINOR DEVIATIONS AS MAY OCCUR OR BE NECESSARY IN CONSTRUCTION. MINOR DETAILS NOT SHOWN.

REV	DATE	BY	CH	SABER FR
14MAY24	RWR	CCS		MAKE
27MAR24	WHO	CCS		PIERCE
16JAN24	CDU	CDU		MODEL

		JOB NO.	40081
TITLE		SCALE	DATE
1500-D-1000P, 1000G WATER, 152" FDLR BODY, DELUGE (2) SPEEDLAYS, HOSE REEL, RS LADDER STORAGE, GENERATOR		1:24	
FOR		DRAWN BY	22DEC23
FERRELLS FIRE RESCUE		CHECKED BY	03JAN24
FERRELLS, NORTH CAROLINA		SHEET SIZE	SHEET NO.
DWG NO.		40081AD	
		D	1 OF 1