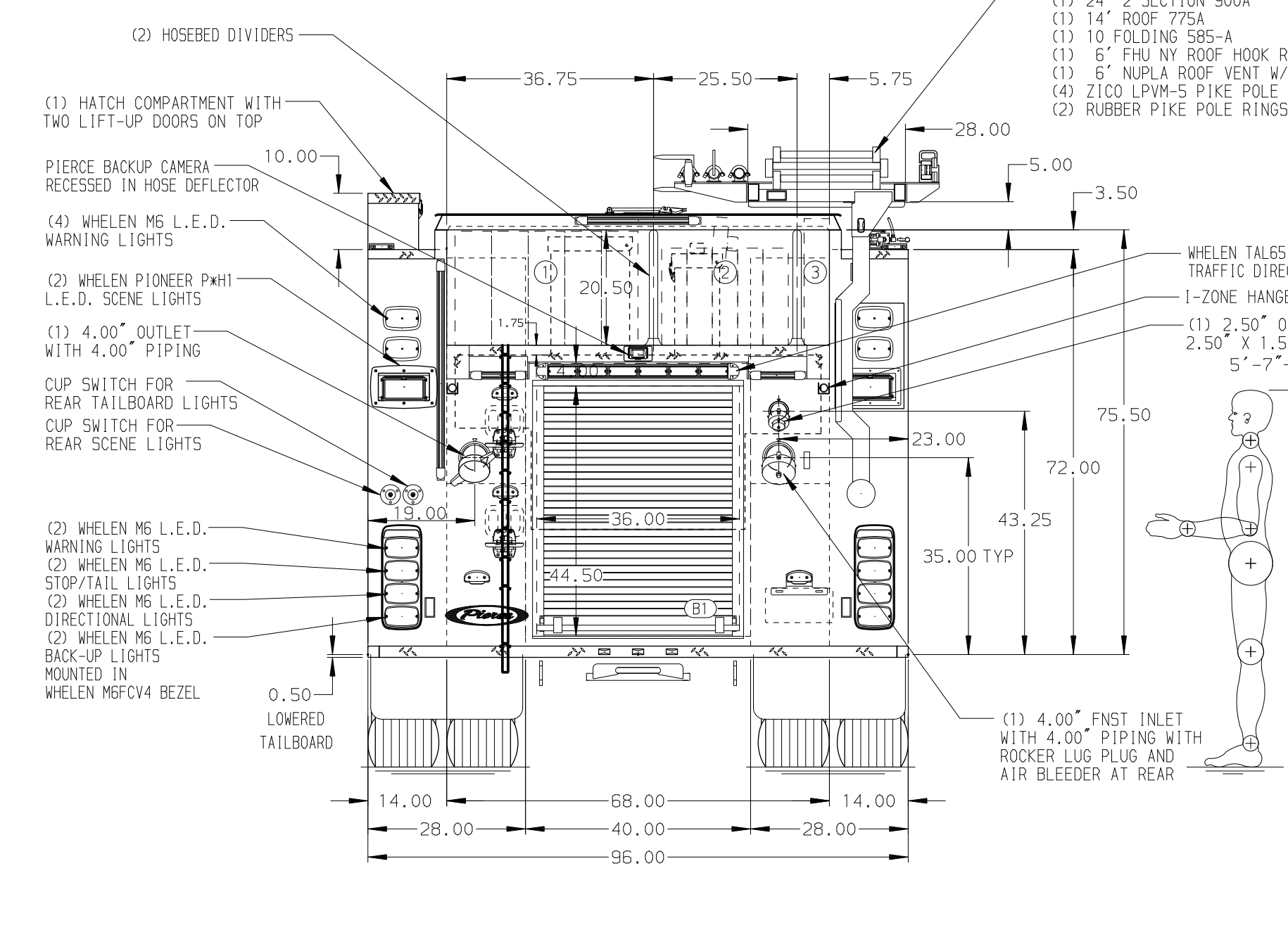
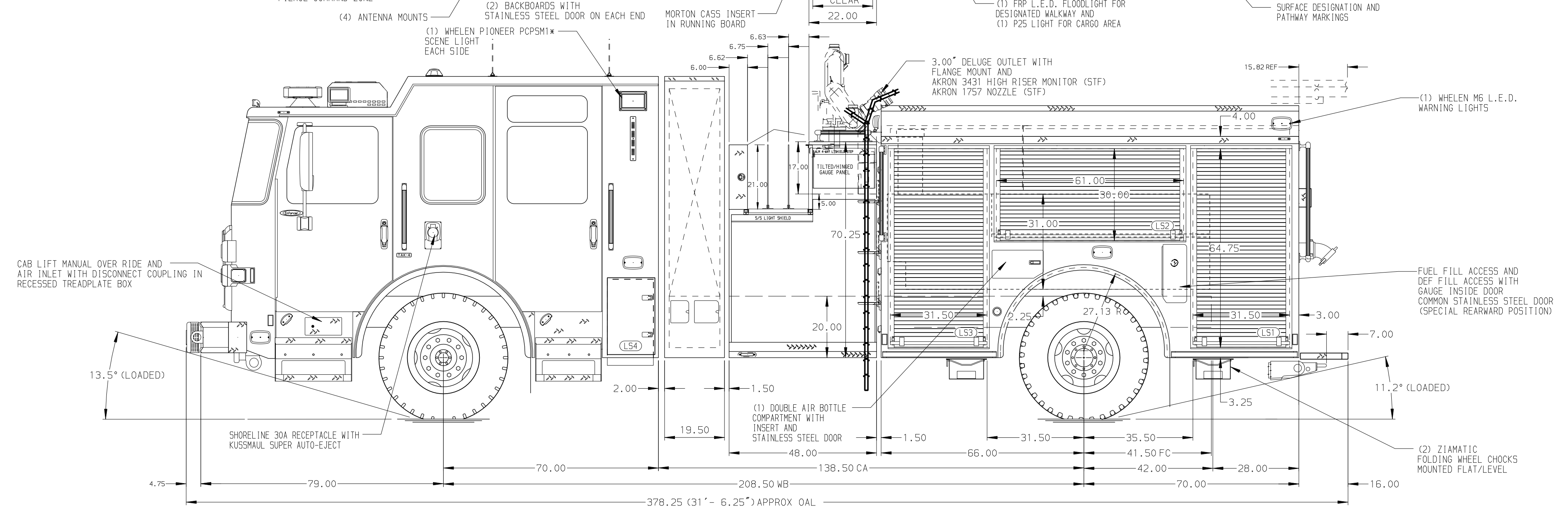


- HOSEBED CAPACITIES
- ① - 900' OF 4.00" DJP HOSE
 - ② - 750' OF 2.50" DJP HOSE
 - ③ - 200' OF 2.50" DJP HOSE



GALVANNEAL BODY

MAXIMUM O.A.L. 372.00"

MAXIMUM O.A.H. 114.00"

NOTE
DIMENSIONS SHOWN ARE APPROXIMATE AND ARE SUBJECT TO MINOR DEVIATIONS AS MAY OCCUR OR BE NECESSARY IN CONSTRUCTION. MINOR DETAILS NOT SHOWN.

1. ONE AIR OUTLET WITH SHUT OFF VALVE LOCATED ON EACH SIDE PUMP PANEL
2. PERIMETER SCENE LIGHTS LOCATED PER ORDER
3. DUAL L.E.D. LIGHT STRIPS IN HOSE BED COVER PER ORDER
4. SEVEN DRIP PAN GUARDS LOCATED ON DOORS PER ORDER
5. SEVEN ELECTRIC DOOR LOCKS ON BODY DOORS PER ORDER
6. SEVEN ON SCENE DUAL L.E.D. LIGHT STRIPS LOCATED ON COMPARTMENTS PER ORDER
7. TWO TRUCK-LITES IN HATCH COMPARTMENT PER ORDER
8. NINE FULL DEPTH/WIDTH ADJUSTABLE SHELVES LOCATED IN COMPARTMENTS PER ORDER
9. FIXED SHELF LOCATED PER ORDER
10. ONE SLIDE OUT FLOOR MOUNTED TRAY LOCATED IN COMPARTMENT PER ORDER
11. ONE RESPOND READY STORAGE WITH FOUR DRAWERS LOCATED IN COMPARTMENT PER ORDER
12. PARTITION BETWEEN COMPARTMENTS (LS1/B1 AND RS1/B1)
13. DRAIN ACCESS PANEL LOCATED IN COMPARTMENT WALL PER ORDER
14. FOAMPRO 2002 SINGLE AGENT FOAM SYSTEM
15. MIC & SPEAKER COMPARTMENT LOCATED ON DS PUMP PANEL

REV	DATE	BY	CH	MAKE	MODEL	ENFORCER
15FEB24		SAM	BSE	PIERCE		
05JAN24		SAM	BSE	PIERCE		
19OCT23		SAM	CDU	PIERCE		

		JOB NO.	40047
		SCALE	DATE
TITLE	1500-D-540P, 500G WATER W/40G FOAM, 136" BODY VOLTERRA (3) CROSSLAYS, HYD LADDER RACK, DELUGE, BOOSTER REEL	DRAWN BY	SAM
FOR	SAN DIEGO FIRE DEPARTMENT SAN DIEGO, CALIFORNIA	CHECKED BY	CDU
DWG NO.	40047AD	SHEET SIZE	SHEET NO.
		D	1 OF 1