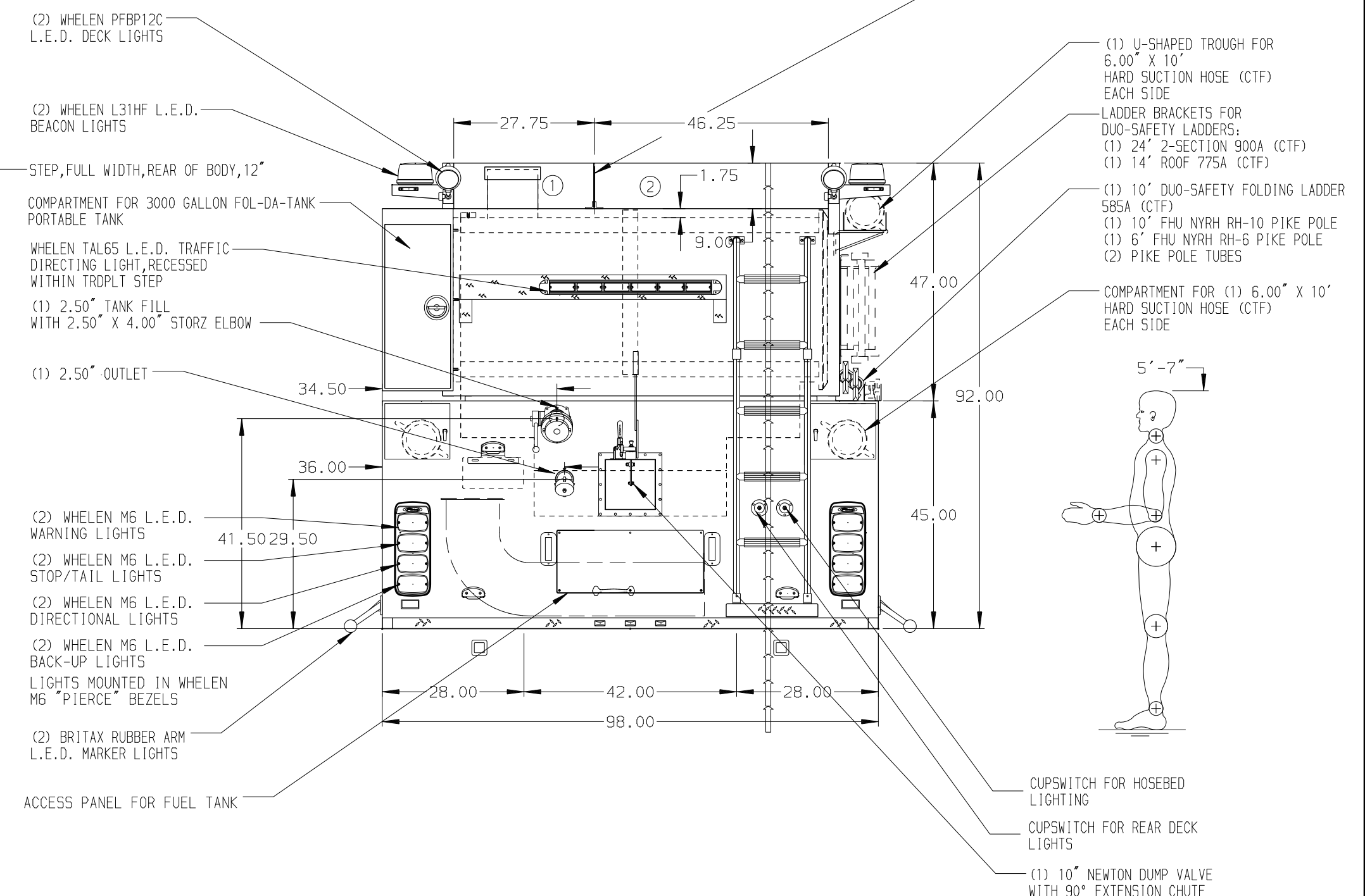
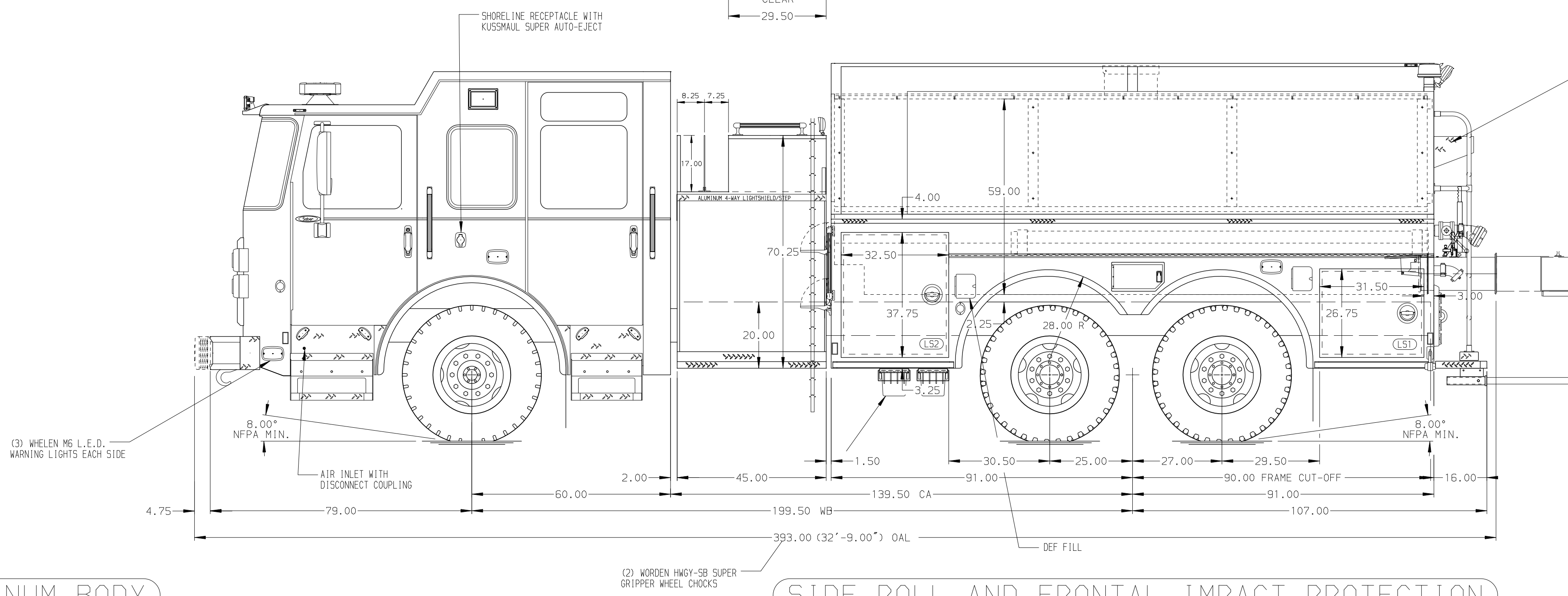


- HOSEBED CAPACITIES
- ① 600' OF 2.50" D.J. HOSE
  - ② 1000' OF 4.00" LDH
- (1) HOSEBED DIVIDER 0.25" SINGLE SHEET



ALUMINUM BODY

SIDE ROLL AND FRONTAL IMPACT PROTECTION

NOTE  
DIMENSIONS SHOWN ARE APPROXIMATE AND ARE SUBJECT TO MINOR DEVIATIONS AS MAY OCCUR OR BE NECESSARY IN CONSTRUCTION. MINOR DETAILS NOT SHOWN.

02AUG24	ADP	CCS	CHASSIS DATA
13MAR24	VHO	CCS	MAKE
01MAR24	VHO	CCS	PIERCE
12DEC23	RWR	CCS	MODEL
06OCT23	LST	PHA	SABER FR
REV	DATE	BY	CH

		JOB NO.	39934
		SCALE	DATE
TITLE	1500-D-2500P, 182" DRYSIDE TANDEM AXLE TANKER (2) CROSSLAYS, DELUGE, RS LADDER BRACKETS	DRAWN BY	LST 18SEP23
FOR	DERRY FIRE DEPARTMENT DERRY, NEW HAMPSHIRE	CHECKED BY	PHA 22SEP23
DWG NO.	39934AD	SHEET SIZE	SHEET NO.
		D	1 OF 1