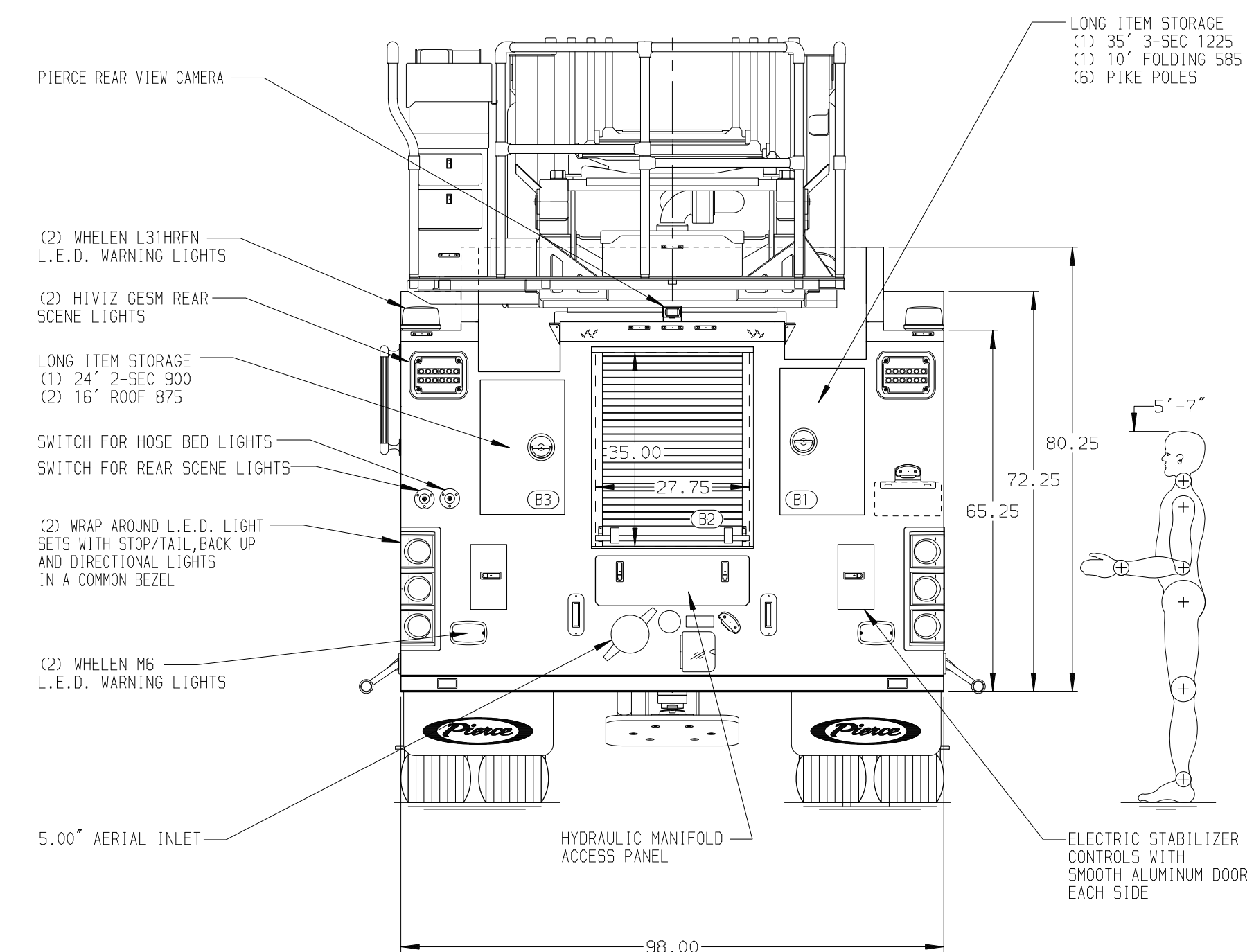
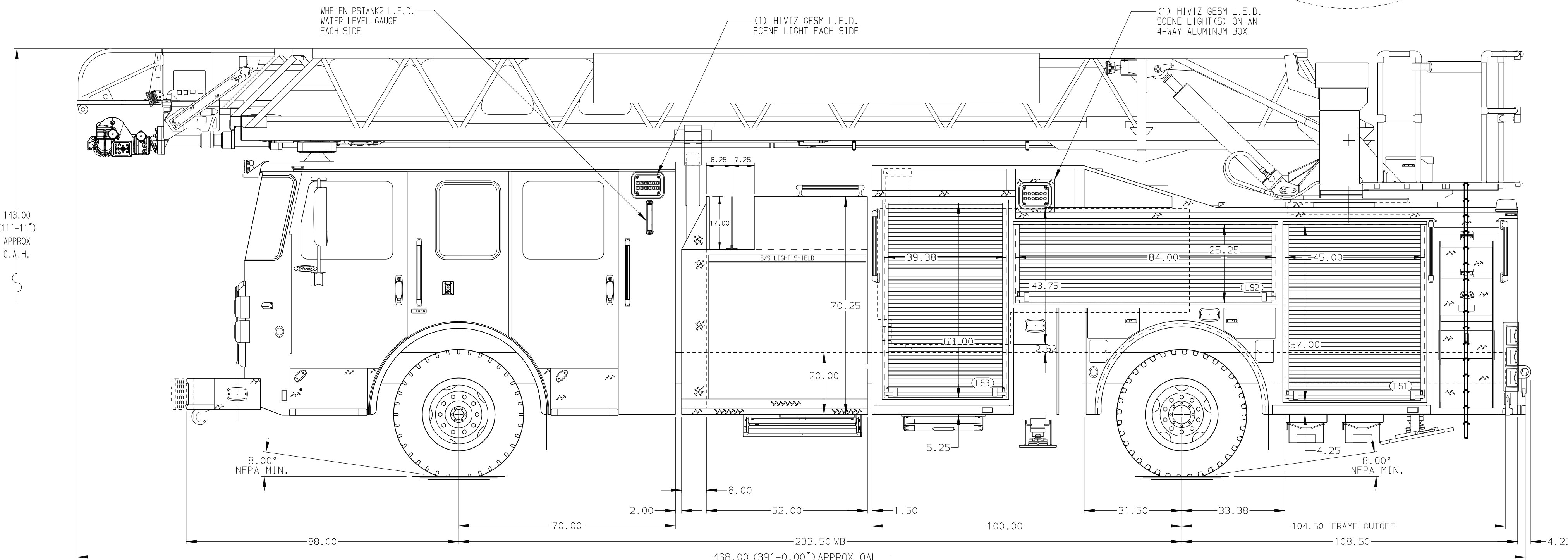


BODY	TOTAL TANK CAPACITY
107' ASL Aluminum Body	500 Gallon Poly Tank
COMPT, LEFT SIDE FRONT	WATER CAPACITY
Full Height RollUp Forward	500 Gallons of Water
COMPT, LEFT SIDE REAR	FOAM CELL CAPACITY
Full Height RollUp Rearward	Foam Cell Not Required
COMPT, RIGHT SIDE FRONT	FOAM SYSTEM
Full Height RollUp Forward	Foam System Not Required
COMPT, RIGHT SIDE REAR	
Full Height RollUp Rearward	



CHASSIS Enforcer Chassis ENGINE 450 HP Cummins L9 Engine	CAB 7000 Enforcer Cab BUMPER 19\"/>	
AXLE, FRONT, CUSTOM 22,800 Lb TAK-4 Axle AXLE, REAR 33,500 Lb Meritor Axle	TRANSMISSION Allison 6th Gen, 3000 EV5 P	PUMPHOUSE 52\"/>
CROSSLAYS, 1.50\" (2) 1.50\"/>		
SPEEDLAYS Speedlays Not Required GENERATOR Generator Not Required	SAFETY Side Roll and Frontal Impact Protection	

NOTE
DIMENSIONS SHOWN ARE APPROXIMATE AND ARE SUBJECT TO MINOR DEVIATIONS AS MAY OCCUR OR BE NECESSARY IN CONSTRUCTION. MINOR DETAILS NOT SHOWN.

- NO LIMITED RETRACTION REQUIRED
- ONE 1.50\"/>
- SHOULDER RECEPTACLE WITH SURE-EJECT LOCATED ON DRIVER SIDE OF THE CAB
- AIR INLET WITH DISCONNECT COUPLING IN THE DRIVER SIDE STEPWELL
- 1500 GPM HIGH FLOW WATERWAY
- BATTERY CHARGE LOCATED ON DRIVER SEAT RISER
- RING LIGHTING ON AERIAL DEVICE PER ORDER
- LIFTING EYE ROPE RESCUE ATTACHMENT AT AERIAL TIP
- NON-RAISED AERIAL PEDESTAL

- ONSPOT AUTOMATIC TIRE CHAIN
- TEN ADJ SHELVES PER ORDER
- ONE TILT/SLIDE-OUT TRAY PER ORDER
- FOUR FLOOR MOUNTED SLIDE-OUT TRAYS PER ORDER
- ONE SWING-OUT TOOLBOARD PER ORDER
- ONE VERTICAL PARTITION PER ORDER
- ONE PEGBOARD ON BACK WALL PER ORDER
- ONE 120V RECEPTACLE PER ORDER

Pierce MANUFACTURING INC.		JOB NO.	39832
TITLE		SCALE	DATE
107' ASCENDANT AERIAL LADDER AND BODY ASSEMBLY		1:24	18DEC23
FOR		CHECKED BY	20DEC23
LENOIR CITY FIRE DEPARTMENT		NAK	
LENOIR, TN		SHEET SIZE	SHEET NO.
DWG NO.		D	1 OF 1
REV		39832AD	