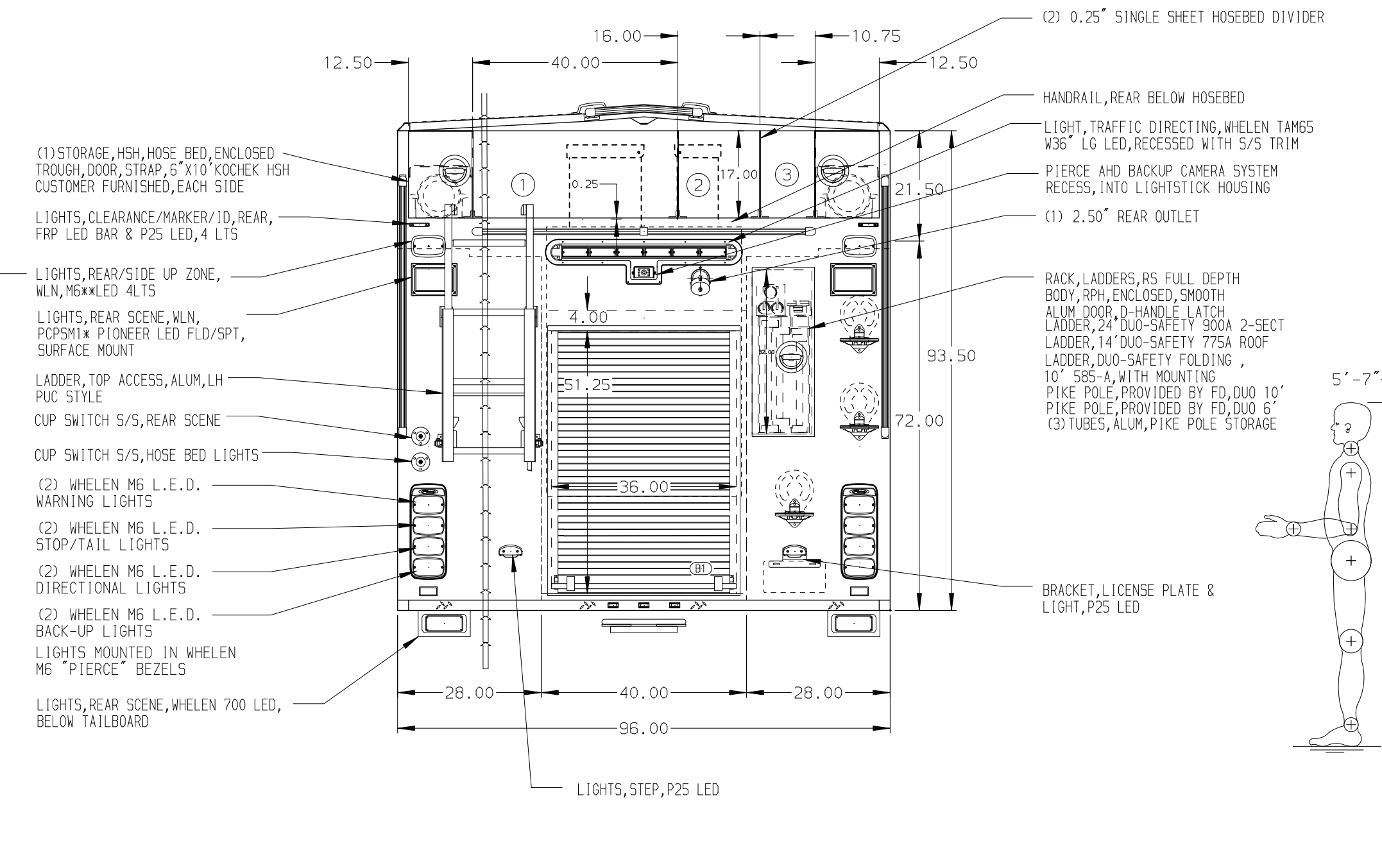
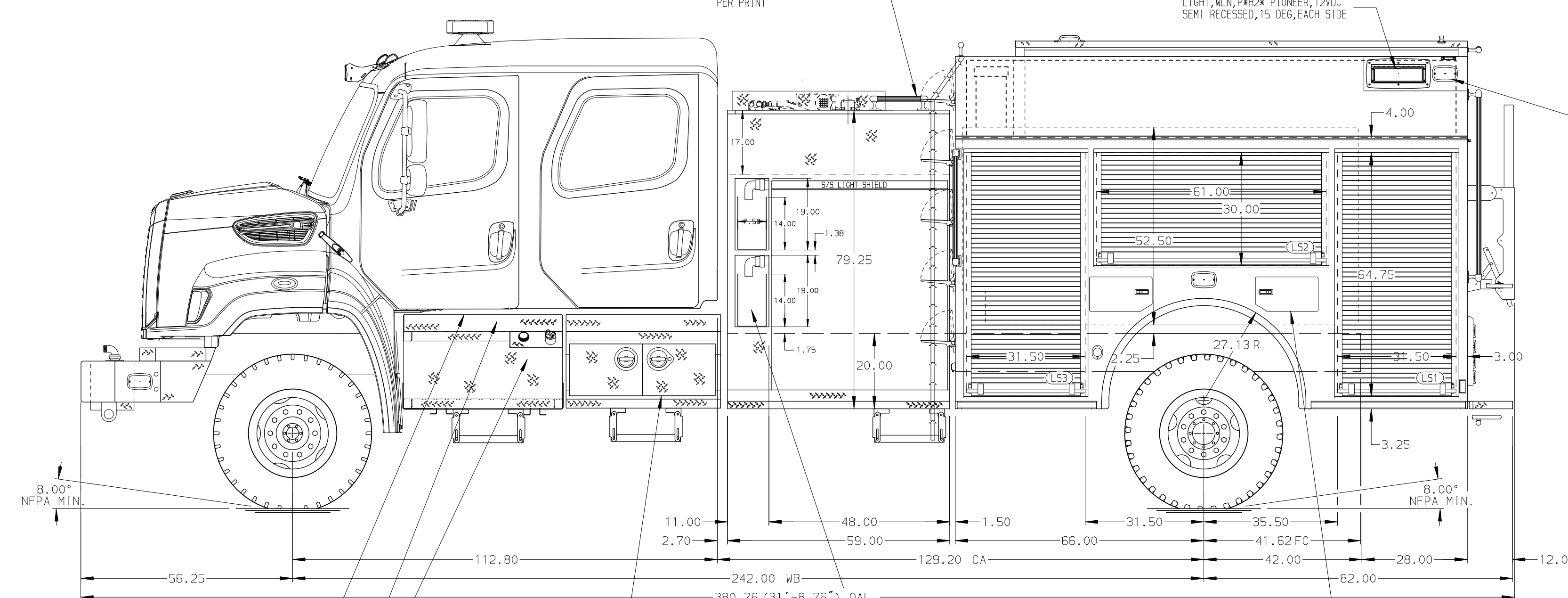


- HOSEBED CAPACITIES
- ① 1000' OF 5.00" LDH STORZ HOSE
 - ② 500' OF 2.50" D.J. HOSE
 - ③ 200' OF 2.50" D.J. HOSE



ALUMINUM BODY

NOTE
DIMENSIONS SHOWN ARE APPROXIMATE AND ARE SUBJECT TO MINOR DEVIATIONS AS MAY OCCUR OR BE NECESSARY IN CONSTRUCTION. MINOR DETAILS NOT SHOWN.

- FUEL TANK, 50 GALLON, LEFT SIDE, ALUM DEF TANK, LEFT SIDE
- AIR INLET, DS STEP AREA
- SHORLINE, 20A 120V, STRAIGHT BLADE, RED COVER, DS UNDER CAB
- COMPARTMENT, TOOL, UNDER LH CREW CAB, WILDLAND, PWF
- SPEED, (2) 1.5" W/POLY TRAY, SIDE MT, SPECIAL WIDTH, DOUBLE STACK HOSE, FOR 200' OF 1.75" DJH
- (2) DOUBLE AIR BOTTLE COMPARTMENT POLISHED DOOR, CHROME C2 LATCH

		JOB NO.	39525
		SCALE	1:24
TITLE 1250-D-750P, 30 FOAM, 136"BDY, L5&R5 FL HGT&DPHT FRT&RR 48" SIDE CONTROL, (2) 1.5" SPEEDLAYS, POLY TRAYS		DRAWN BY	JLA
		CHECKED BY	AJA
FOR DURANGO FIRE PROTECTION DISTRICT DURANGO, COLORADO		SHEET SIZE	D
		SHEET NO.	1 OF 1
DWG NO. 39525AD			

REV	DATE	BY	CH	CHASSIS DATA	MAKE	MODEL	PLUS
10MAY24	RWR	JAP					
02APR24	VHO	CCS					
12FEB24	RWR	AJA					