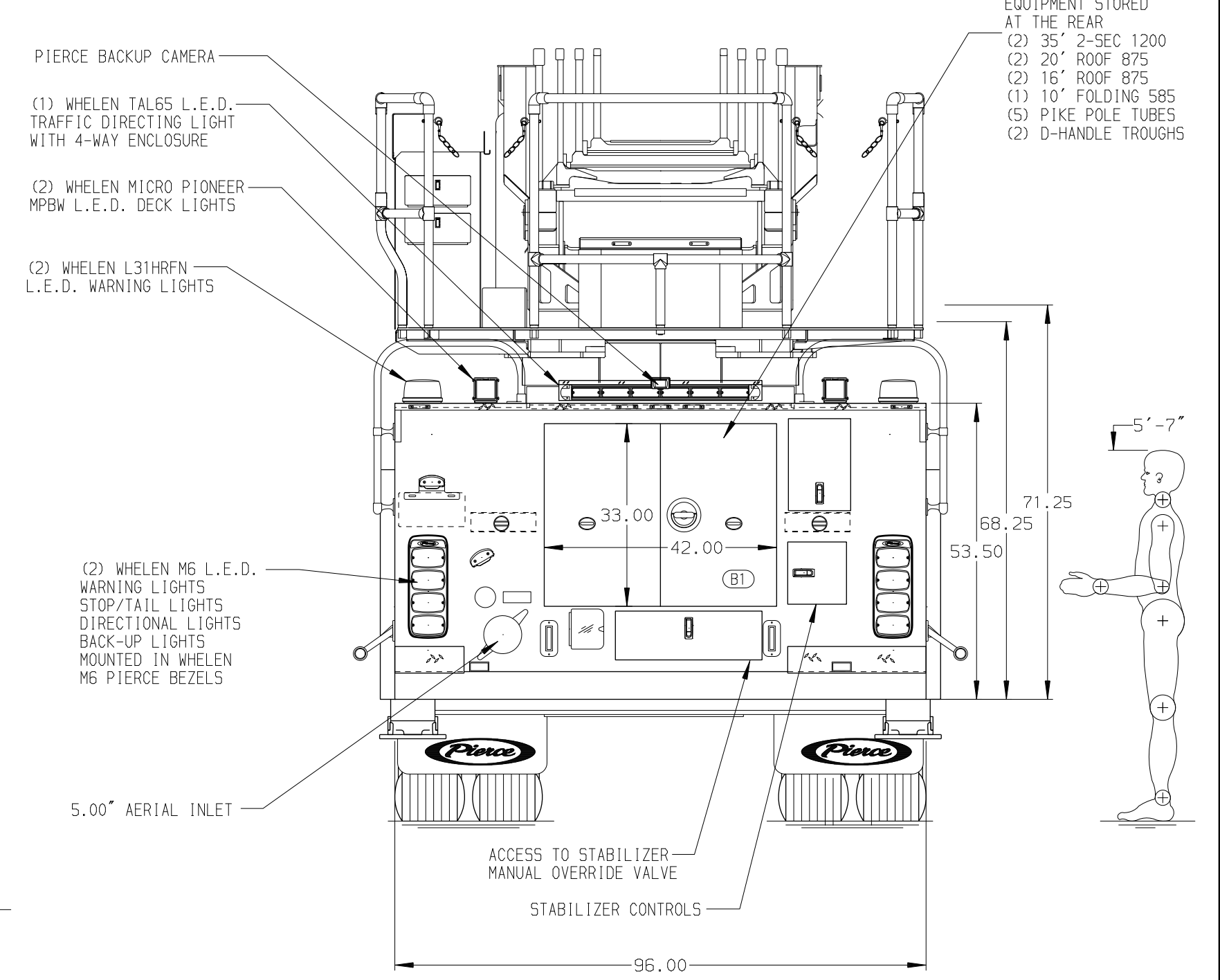
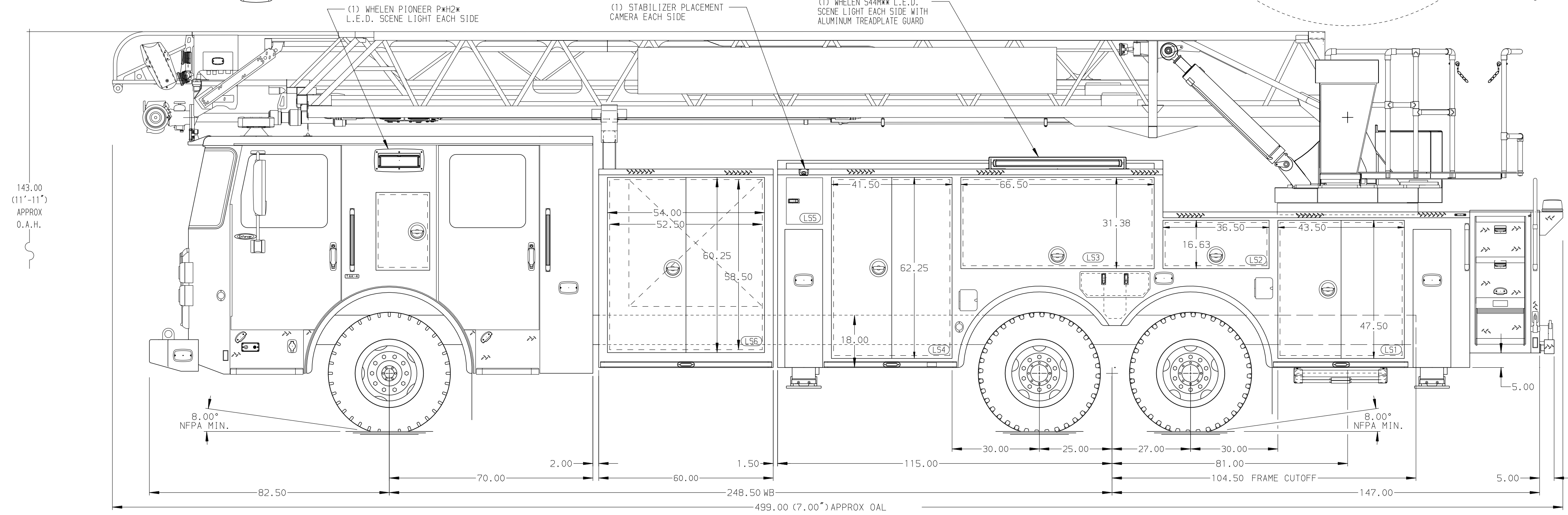


**BODY**  
 107' ASL Tandem Axle Aluminum Body  
**COMPT, LEFT SIDE FRONT**  
 FH/FD Lap Forward w/o Chute  
**COMPT, LEFT SIDE REAR**  
 FH/FD Lap Rearward  
**COMPT, RIGHT SIDE FRONT**  
 FH/FD Lap Forward w/o Chute  
**COMPT, RIGHT SIDE REAR**  
 FH/FD Lap Rearward



<b>CHASSIS</b> Enforcer Chassis	<b>CAB</b> 7000 Enforcer Cab	<b>AXLE, FRONT, CUSTOM</b> 22,800 Lb TAK-4 Axle	<b>TRANSMISSION</b> Allison 6th Gen, 4500 EVS P	<b>COMPARTMENT-NO PUMP</b> 60" Wide w/Double Doors
<b>ENGINE</b> 525 HP Cummins X12 Engine	<b>BUMPER</b> 13" Extended Painted Steel	<b>AXLE, REAR</b> 44,000 Lb Meritor Axle	<b>GENERATOR</b> Generator Not Required	

<b>NOTE</b> DIMENSIONS SHOWN ARE APPROXIMATE AND ARE SUBJECT TO MINOR DEVIATIONS AS MAY OCCUR OR BE NECESSARY IN CONSTRUCTION. MINOR DETAILS NOT SHOWN.	1. 14.00" AERIAL LIMITED RETRACTION	11. ONSPOT AUTOMATIC TIRE CHAINS PER ORDER	21. TWO SWING-OUT TOOLBOARDS PER ORDER
	2. SHORELINE RECEPTACLE WITH KUSSMAUL SUPER AUTO-EJECT LOCATED ON DRIVER SIDE OF THE CAB	12. TWO SLIDE-OUT TRAYS PER ORDER	22. ONE VERTICAL PARTITION PER ORDER
	3. AIR INLET/OUTLET WITH DISCONNECT FITTING IN THE DRIVER SIDE STEPWELL	13. ONE SLIDE-OUT 2-WAY (FULL TRANS) TRAY PER ORDER	
	4. BATTERY CHARGER LOCATED PER ORDER	14. DC POWER TO AERIAL TIP	
	5. BATTERY CHARGE INDICATOR LOCATED ON THE DRIVER SIDE SEAT RISER	15. RUNG LIGHTING ON AERIAL LADDER	
	6. FOUR ADJUSTABLE SHELVES LOCATED PER ORDER	16. TWO FLOOR EXTENSIONS PER ORDER	
	7. FOUR FLOOR MOUNTED SLIDE-OUT TRAYS LOCATED PER ORDER	17. WHEEL CHOCKS PROVIDED BY FIRE DEPARTMENT	
	8. 3.00" RAISED AERIAL PEDESTAL	18. TWO PULL STRAPS PER ORDER	
	9. LIFTING EYE ROPE RESCUE ATTACHMENT AT AERIAL TIP	19. ONE FIXED SHELF PER ORDER	
	10. 1500 GPM HIGH FLOW WATERWAY	20. TWO SLIDE-OUT (1/2 TRANS) TRAYS PER ORDER	

MAXIMUM O.A.H. 144.00"  
 MIN A.O.A. 15°  
 MIN A.O.D. 12°

REV	DATE	BY	CH
14MAR24	LWE	JKR	
27NOV23	LWE	AST	

<b>Pierce MANUFACTURING INC.</b>		JOB NO.	39367
TITLE		SCALE	DATE
107' ASCENDANT AERIAL LADDER AND BODY ASSEMBLY		1:24	26SEP23
FOR		CHECKED BY	28SEP23
EL DORADO COUNTY FIRE DISTRICT		NAK	
CAMINO, CA		SHEET SIZE	SHEET NO.
DWG NO.		D	1 OF 1
39367AD			