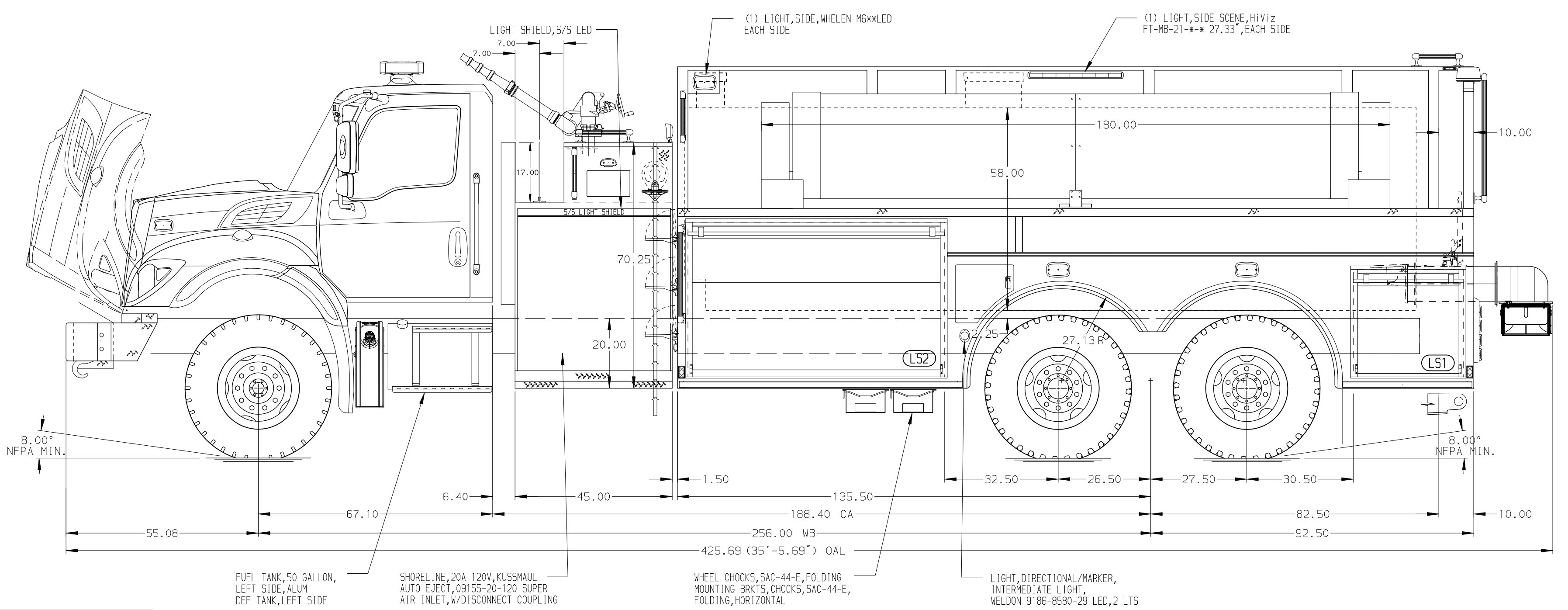


HOSEBED CAPACITIES
 (1) 200' OF 2.50" D.J. POLY HOSE



ALUMINUM BODY

NOTE
 DIMENSIONS SHOWN ARE APPROXIMATE AND ARE SUBJECT TO MINOR DEVIATIONS AS MAY OCCUR OR BE NECESSARY IN CONSTRUCTION. MINOR DETAILS NOT SHOWN.

REV	DATE	BY	CH	CHASSIS DATA	TITLE
02JUL24	RHU	CAG	MAKE	1500-D-3000P, 2980 WTR, 20 FOAM, 228" DRYSIDE 2ND GEN, LS&RS 3/4 HGT FRNT, LOW RR, 45" SD CNTRL, (2) 1.5" CRSSLY	
03APR24	RWR	JAP	IHC	HAGERMAN FIRE DEPARTMENT	
11DEC23	JLA	AJA	MODEL	HAGERMAN, NEW MEXICO 88232	
			HV607	DWG NO.	

Pierce MANUFACTURING INC.

JOB NO. 39315

SCALE 1:24 DATE

DRAWN BY JLA 120CT23

CHECKED BY AJA 160CT23

SHEET SIZE D SHEET NO. 1 OF 1

39315AD