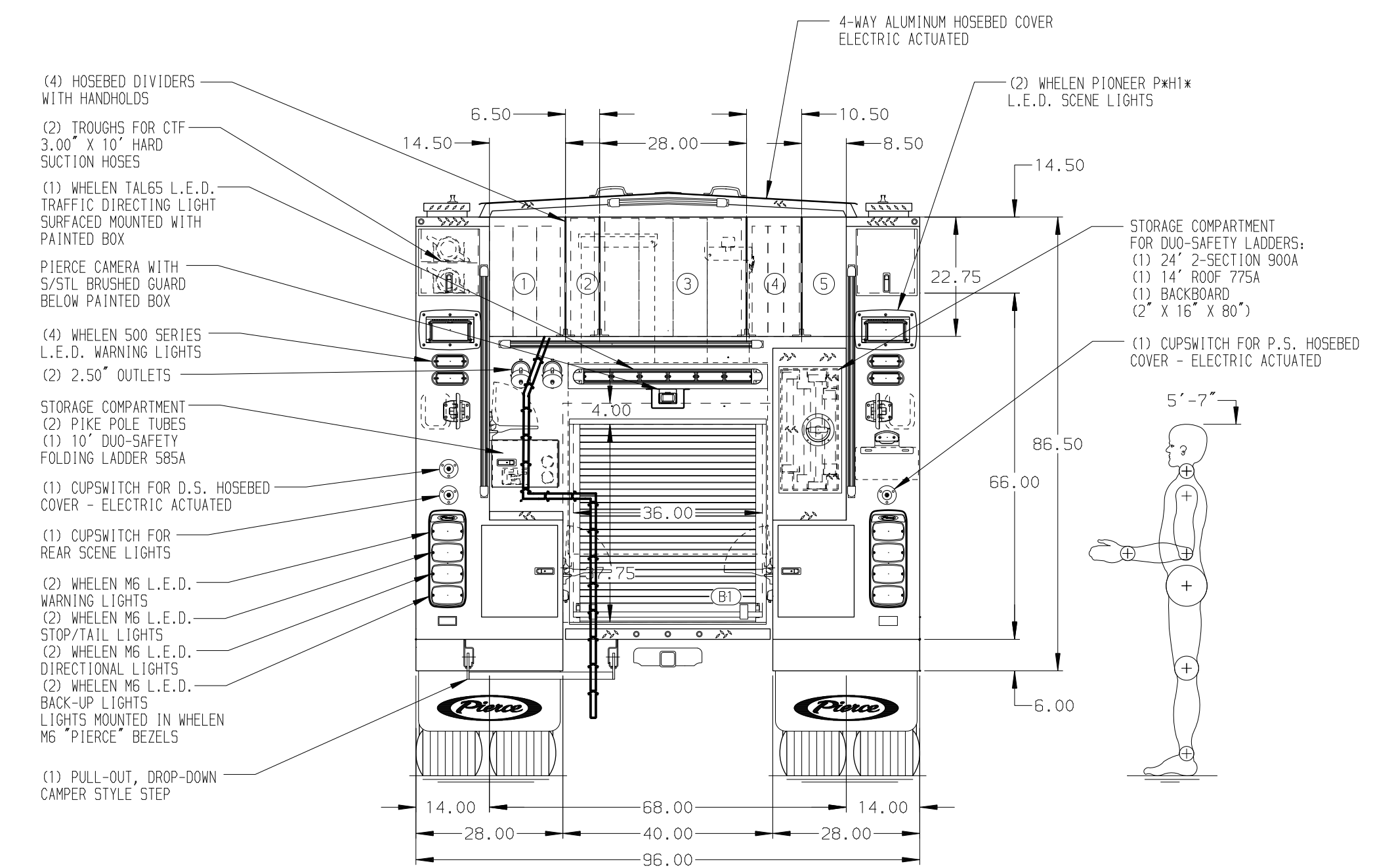


- HOSEBED CAPACITIES
- ① 700' OF 2.50" D.J. POLY HOSE
  - ② 250' OF 2.50" D.J. POLY HOSE
  - ③ 1000' OF 4.00" D.J. POLY HOSE
  - ④ 1000' OF 1.50" S.J. WILDLAND HOSE (5 BUNDLES OF ROLLED HOSE)
  - ⑤ STOKES BASKET, C.T.F.



GALVANNEAL MAXIMUM O.A.H. 120.00"

NOTE  
DIMENSIONS SHOWN ARE APPROXIMATE AND ARE SUBJECT TO MINOR DEVIATIONS AS MAY OCCUR OR BE NECESSARY IN CONSTRUCTION. MINOR DETAILS NOT SHOWN.

- 1. AIR INLET w/ DISCONNECT COUPLING LOCATED ON D.S. PUMP PANEL
- 2. BATTERY CHARGER LOCATED BEHIND DRIVER'S SEAT
- 3. BATTERY CHARGE INDICATOR LOCATED ON D.S. SEAT RISER
- 4. TWELVE ADJUSTABLE FULL WIDTH/DEPTH SHELVES LOCATED PER SHOP ORDER
- 5. ONE FLOOR MOUNTED SLIDE-OUT TRAY LOCATED PER SHOP ORDER
- 6. TWO VERTICAL PARTITIONS LOCATED PER SHOP ORDER

REV	DATE	BY	CH	ENFORCER
27SEP24	JDA	TDC		
16AUG24	AMI	TDC		
27JUN24	KLE	KLH		

		JOB NO.	39261
		SCALE	DATE
TITLE	1250 GPM, 520G TANK, 500G WATER, 20G FOAM 152" PUMPER, MUX	DRAWN BY	-
FOR	SCOTT'S VALLEY FPD SCOTT'S VALLEY, CALIFORNIA	CHECKED BY	KLH
DWG NO.	39261AD	SHEET SIZE	SHEET NO.
		D	1 OF 1