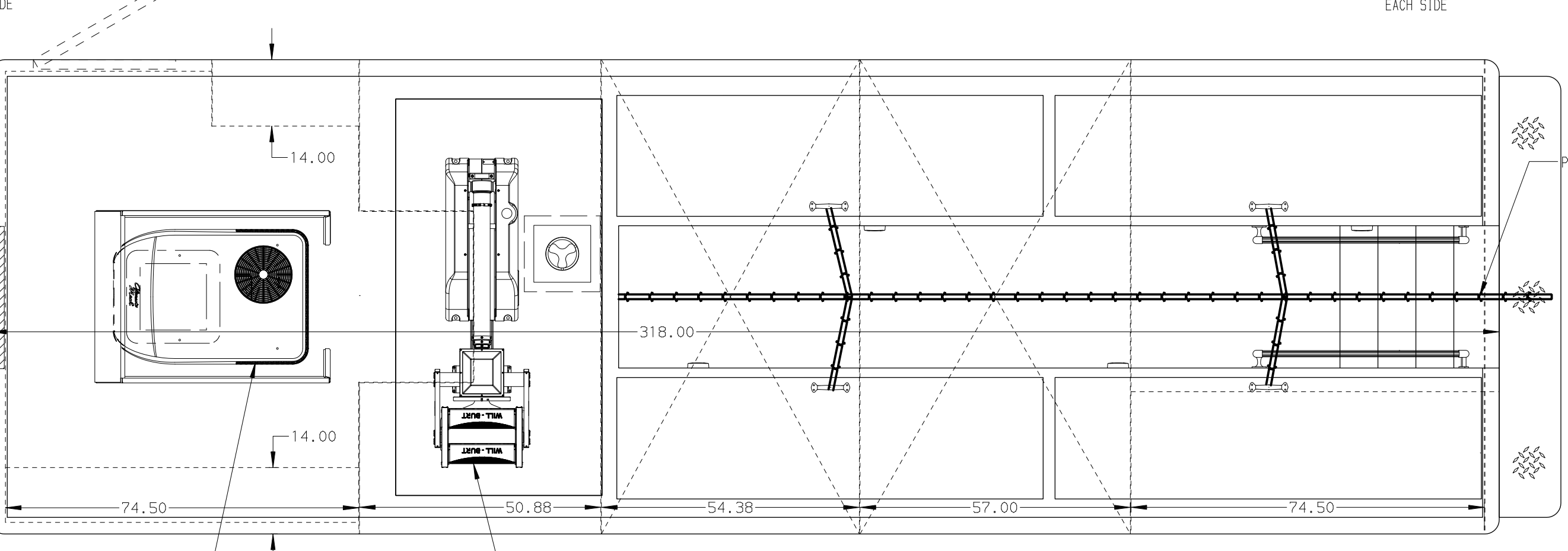
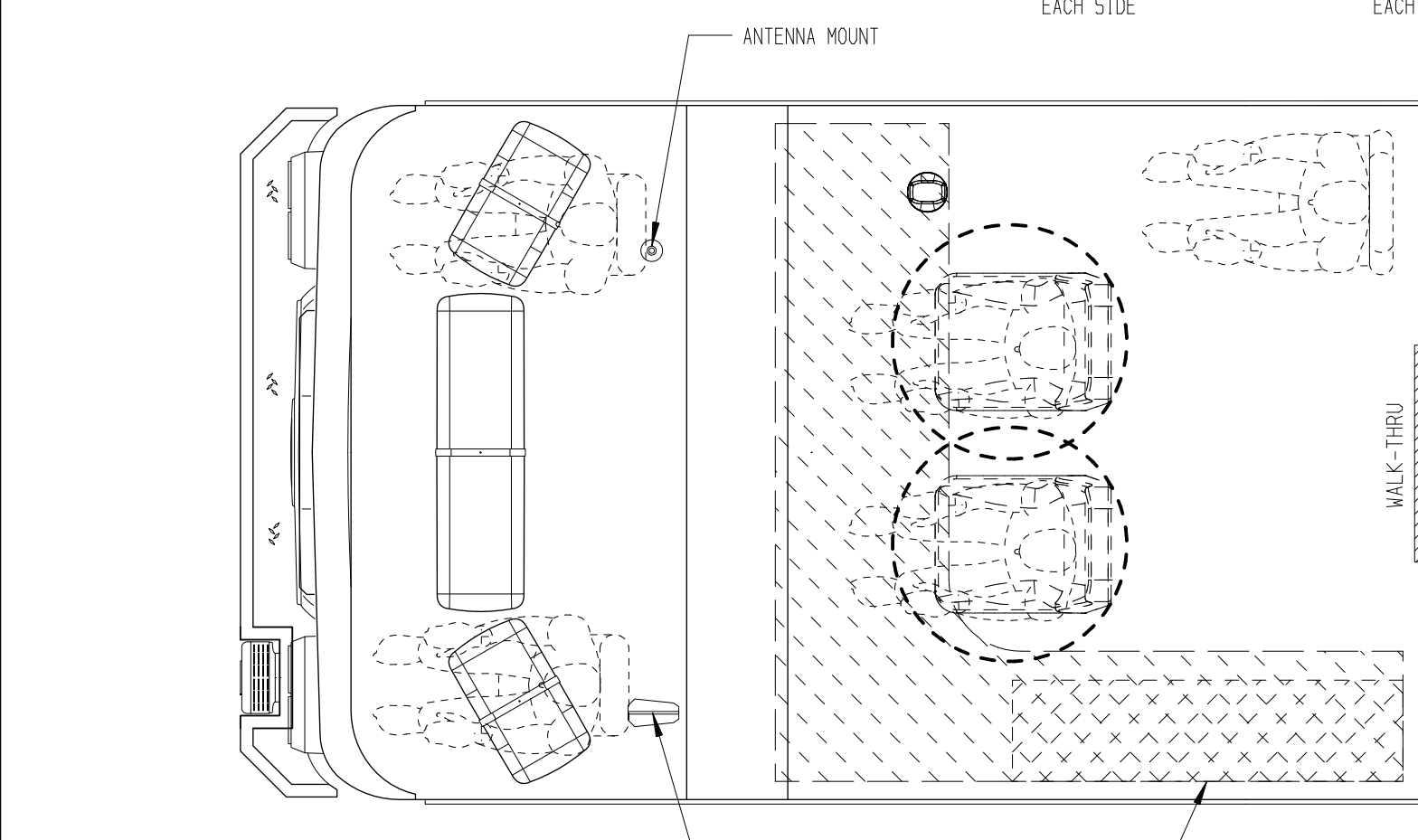
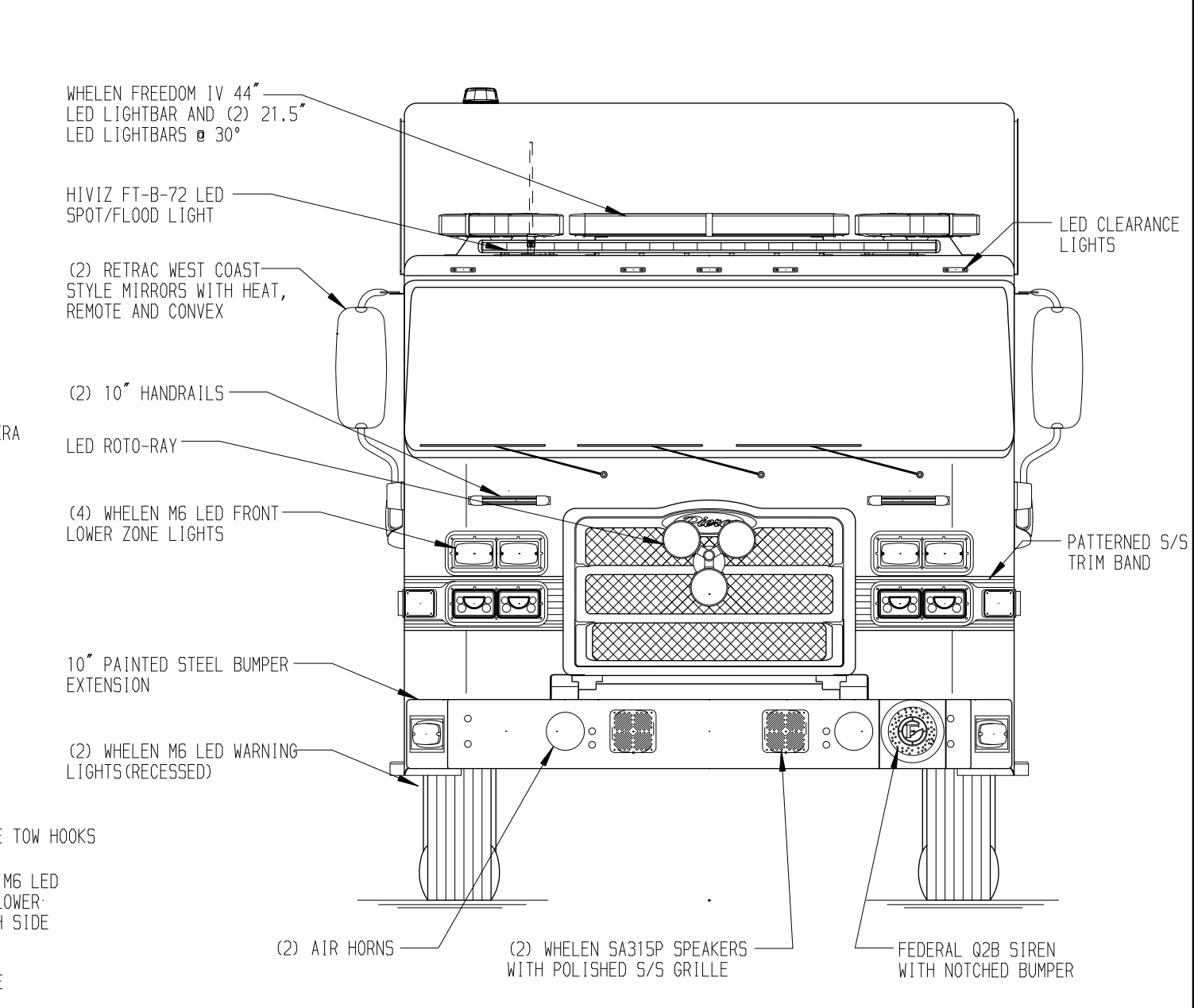
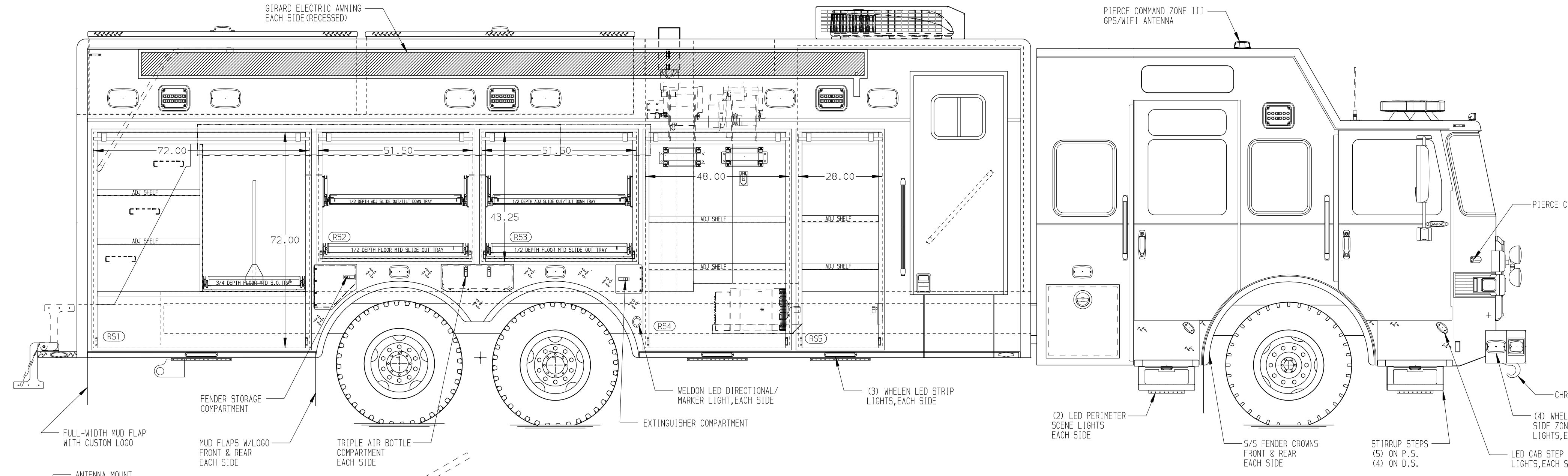
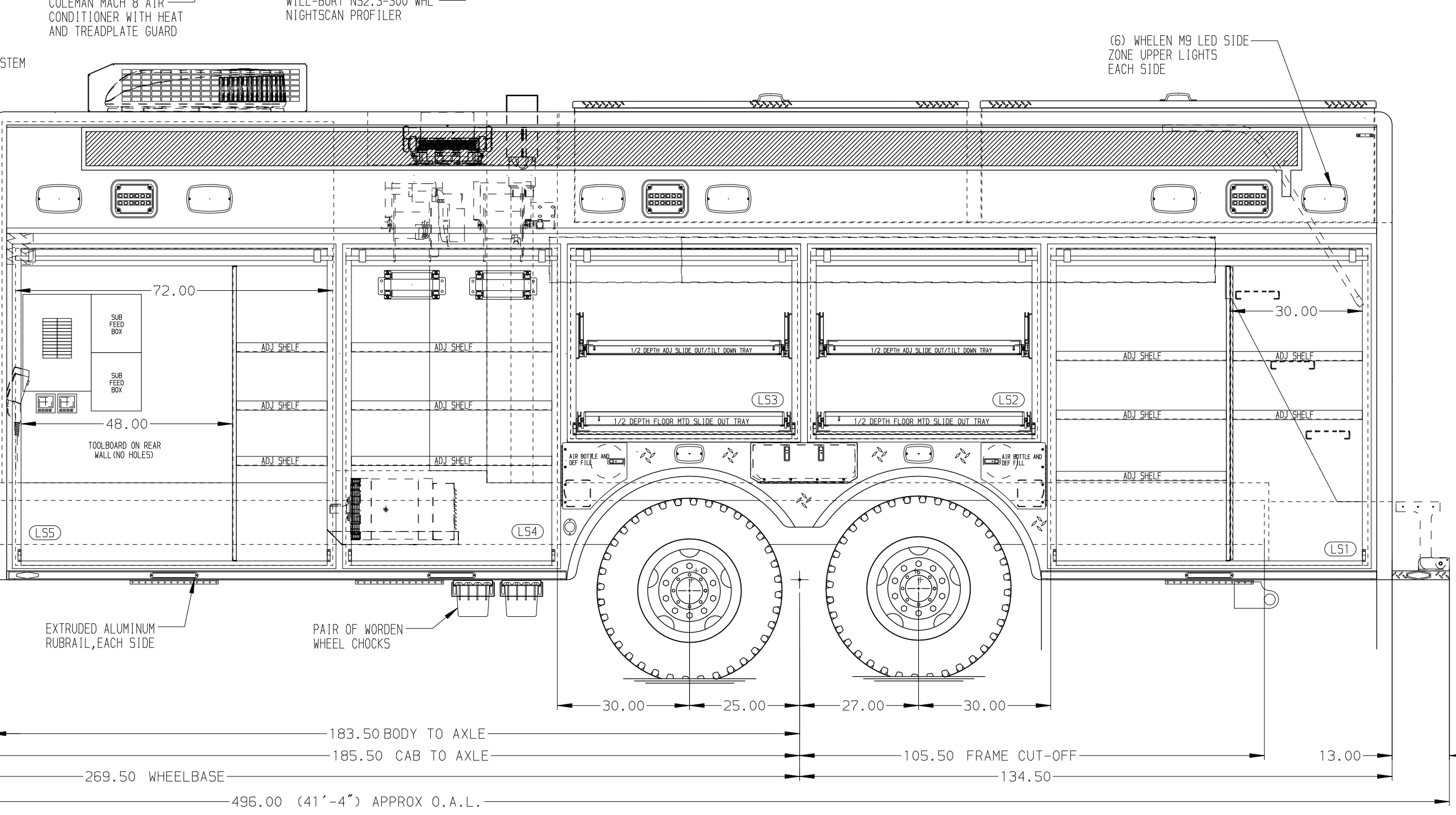
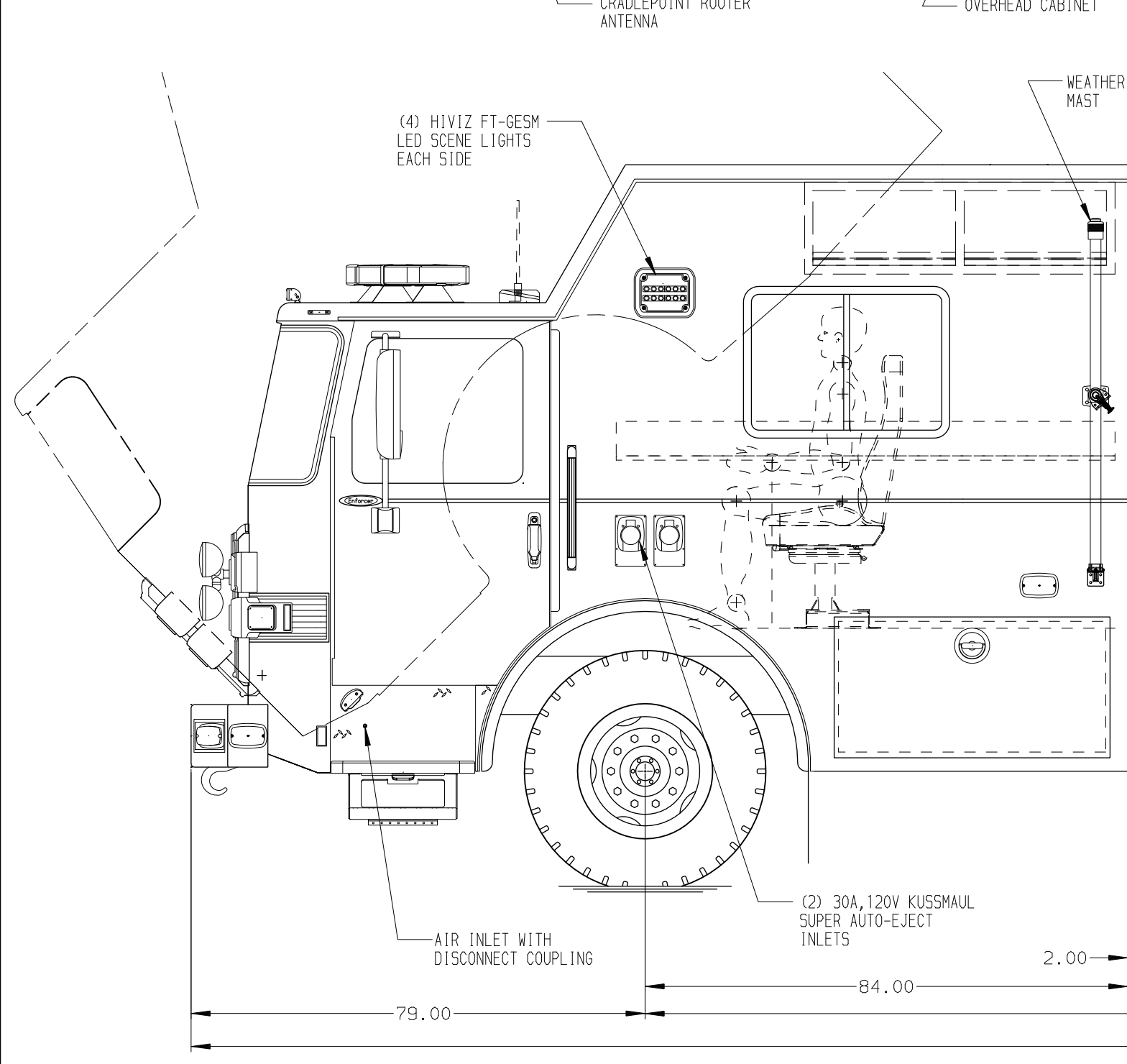
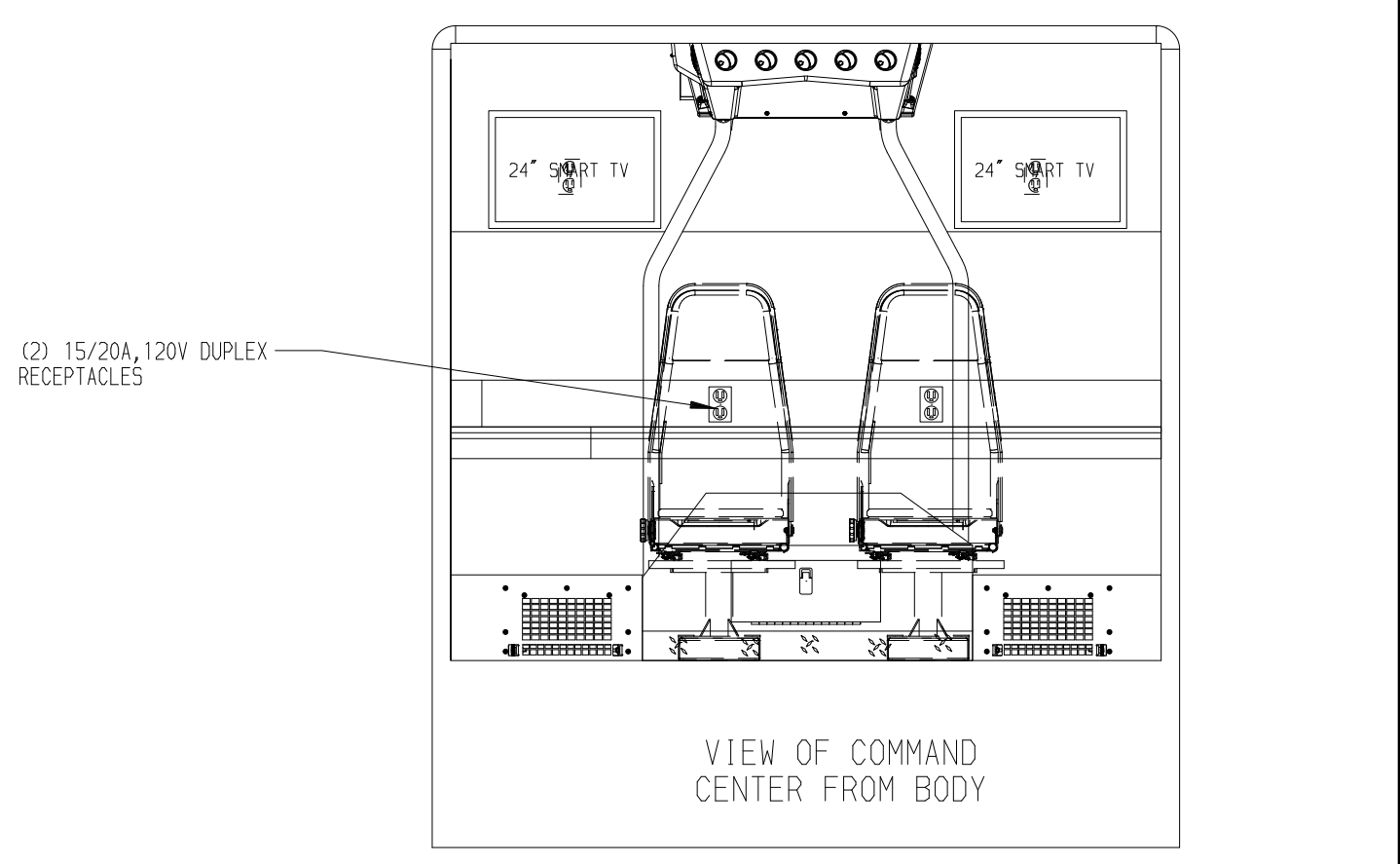


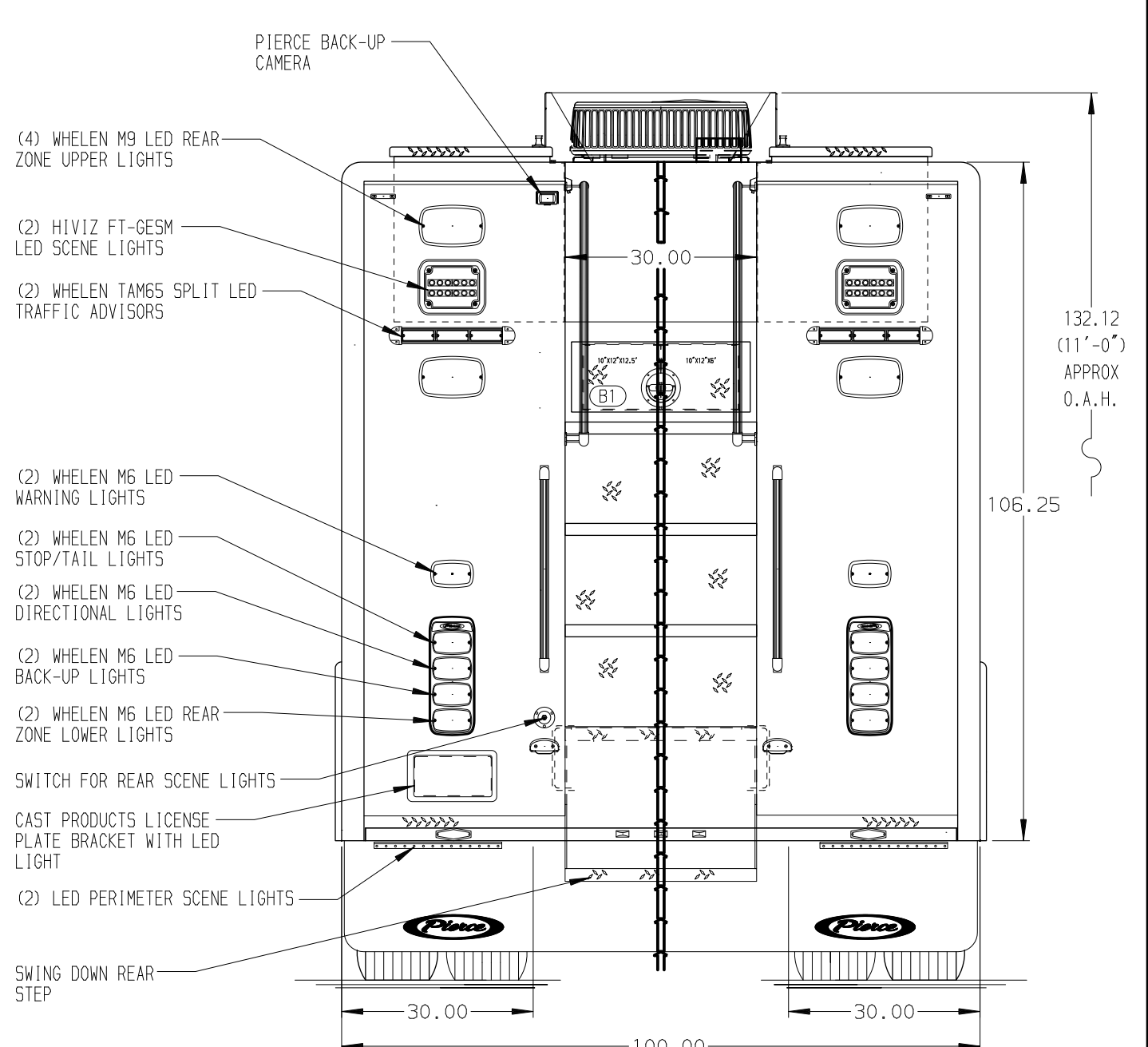
- RIGHT SIDE COMPARTMENTS CONTAIN THE FOLLOWING:**
- COMPARTMENT R51 CONTAINS:
    - (1) HORIZONTAL FLOOR EXTENSION
    - (1) VERTICAL COMPARTMENT DIVIDER
    - (2) STD DEPTH ADJ SHELVES
    - (1) 3/4 DEPTH FLOOR MOUNTED TRAY WITH TOOLBOARD
  - COMPARTMENT R52 CONTAINS:
    - (1) 1/2 DEPTH FLOOR MTD SLIDE OUT TRAY
    - (1) 1/2 DEPTH SLIDE OUT/TILT TRAY
  - COMPARTMENT R53 CONTAINS:
    - (1) 1/2 DEPTH FLOOR MTD SLIDE OUT TRAY
    - (1) 1/2 DEPTH SLIDE OUT/TILT TRAY
  - COMPARTMENT R54 CONTAINS:
    - (1) ELECTRIC CORD REEL WITH 200' OF 12/3 YELLOW CORD
    - (1) TOOL AIR REEL WITH 200' OF HOSE
    - (2) STD DEPTH ADJ SHELVES
    - (1) 15/20A, 120V DUPLEX RECEPTACLE
  - COMPARTMENT R55 CONTAINS:
    - (1) CAB LIFT CONTROLLER
    - (2) SPECIAL DEPTH ADJ SHELVES



- REAR COMPARTMENT CONTAINS THE FOLLOWING:**
- COMPARTMENT B1 CONTAINS:
    - (2) STORAGE TROUGHS
  - COMPARTMENT B2 CONTAINS:



- LEFT SIDE COMPARTMENTS CONTAIN THE FOLLOWING:**
- COMPARTMENT L51 CONTAINS:
    - (1) REAR WALL DIVIDER
    - (1) VERTICAL COMPARTMENT DIVIDER
    - (5) STD DEPTH ADJ SHELVES
  - COMPARTMENT L52 CONTAINS:
    - (1) 1/2 DEPTH FLOOR MTD SLIDE OUT TRAY
    - (1) 1/2 DEPTH SLIDE OUT/TILT TRAY
  - COMPARTMENT L53 CONTAINS:
    - (1) 1/2 DEPTH FLOOR MTD SLIDE OUT TRAY
    - (1) 1/2 DEPTH SLIDE OUT/TILT TRAY
  - COMPARTMENT L54 CONTAINS:
    - (1) ELECTRIC CORD REEL WITH 200' OF 20/3 YELLOW CORD
    - (1) TOOL AIR REEL WITH 200' OF HOSE
    - (3) STD DEPTH ADJ SHELVES
  - COMPARTMENT L55 CONTAINS:
    - TOOLBOARD ON BACK WALL OF COMPARTMENT
    - (1) NIGHT SCAN CONTROLLER
    - (1) VERTICAL COMPARTMENT DIVIDER
    - (3) SPECIAL DEPTH ADJ SHELVES
    - (1) CIRCUIT BREAKER PANEL
    - (1) GENERATOR METER PANEL
    - (2) SUB FEED BOXES



**NOTE**  
DIMENSIONS SHOWN ARE APPROXIMATE AND ARE SUBJECT TO MINOR DEVIATIONS AS MAY OCCUR OR BE NECESSARY IN CONSTRUCTION. MINOR DETAILS NOT SHOWN.

- NOTES:**
- ONAN 25KW SINGLE PHASE PTO DRIVEN GENERATOR WITH SPLASH GUARD LOCATED BETWEEN THE FRAME RAILS
  - POLISHED S/S SCUFFPLATES ON CAB AND CREW CAB DOOR JAMBS
  - FLOOR IN CAB AND COMMAND CAB TO BE ALUMINUM TREADPLATE
  - BATTERY CHARGE INDICATOR LOCATED ON DRIVER'S SEAT RISER
  - PIERCE LED LIGHT STRIPS IN ALL BODY AND HATCH COMPARTMENTS
  - REAR FENDER PANELS WILL BE ALUMINUM TREADPLATE

**CUSTOMER APPROVAL**  
APPROVED BY: \_\_\_\_\_  
DATE: \_\_\_\_\_

**CLEAR DOOR WIDTH KEY**

AMOR ROLL UP DOORS:	-2 1/4"
CURTAIN ROLL UP DOORS:	-2 1/2"
PIERCE DOUBLE LAP DOORS:	-4 1/4"
PIERCE LIFT-UP LAP DOORS:	-1 1/2"

(EX: 60" F-F - 2 1/4" = 57 3/4" CLEAR)  
(F-F) = FRAME TO FRAME

**(SIDE ROLL & FRONTAL IMPACT PROTECTION)**

REV	DATE	BY	CH	MODEL
20SEP24	DHE	JJF	CHASSIS DATA	
17JUN24	DHE	CDK		
08APR24	DHE	CDU	MAKE	
04APR24	DHE	CDK	PIERCE	
05FEB24	DHE	CDK		

**Pierce MANUFACTURING INC.**

JOB NO. 39244  
SCALE 1:24  
DATE \_\_\_\_\_

TITLE HEAVY DUTY RESCUE COMBO WALK-IN/NON-WALK-IN  
FOR FAYETTEVILLE FIRE DEPARTMENT  
BID #1187 FARRIOR, WADE

DWG NO. 39244AD-SH1  
DRAWN BY DHE  
CHECKED BY CDK  
SHEET SIZE D  
SHEET NO. 1 OF 1