

Pumper, PUC BODY

Pumper, PUC, Aluminum
CHASSIS
Enforcer Chassis, PUC

CHASSIS
AXLE, FRONT, CUSTOM
19,500 Lb TAK-4 Axle

AXLE, REAR
27,000 Lb Meritor Axle

ENGINE
500 HP Cummins X12 Engine

TRANSMISSION
Allison 6th Gen, 4500 EVS P

BUMPER
16" Extended Stainless Steel

CAB
7010 Enforcer Cab, PUC

BODY
TOTAL TANK CAPACITY
750 Gallon Poly Tank

WATER CAPACITY
730 Gallons of Water

FOAM CELL CAPACITY
20 Gallon Foam Cell

COMPT, PUMPER, REAR
33.50" FF RollUp Rear Compt w/Tailboard, PUC

COMPT, PUMPER, LEFT SIDE
177" RollUp Full Height & Depth Front & Rear, PUC

COMPT, PUMPER, RIGHT SIDE
177" RollUp Full Height & Depth Front & Rear, PUC

FIRE SUPPRESSION
PUMPHOUSE
Control Zone, PUC

PUMP
1500 GPM Pierce PUC

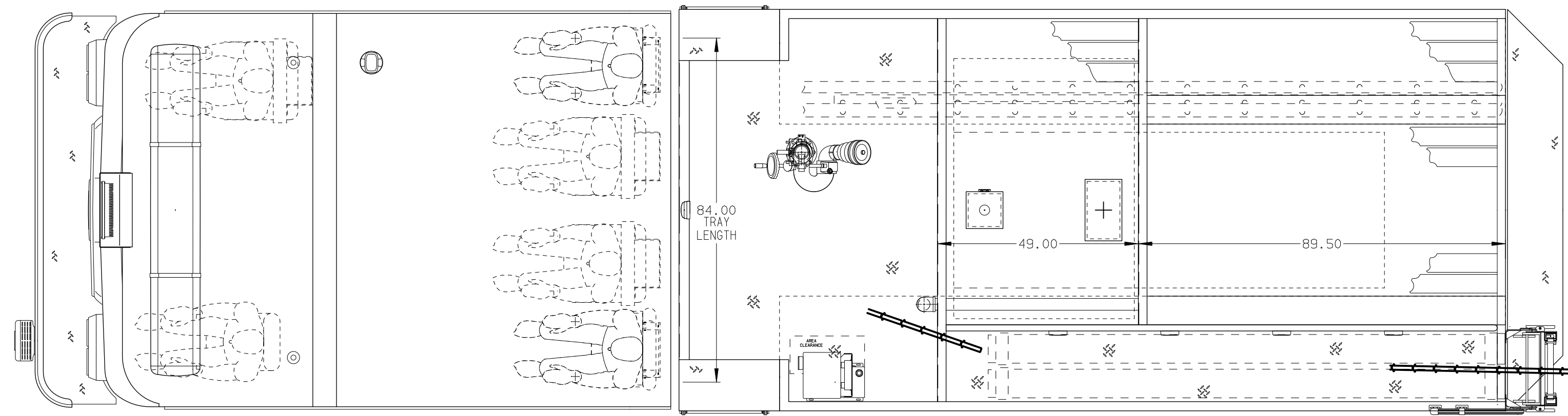
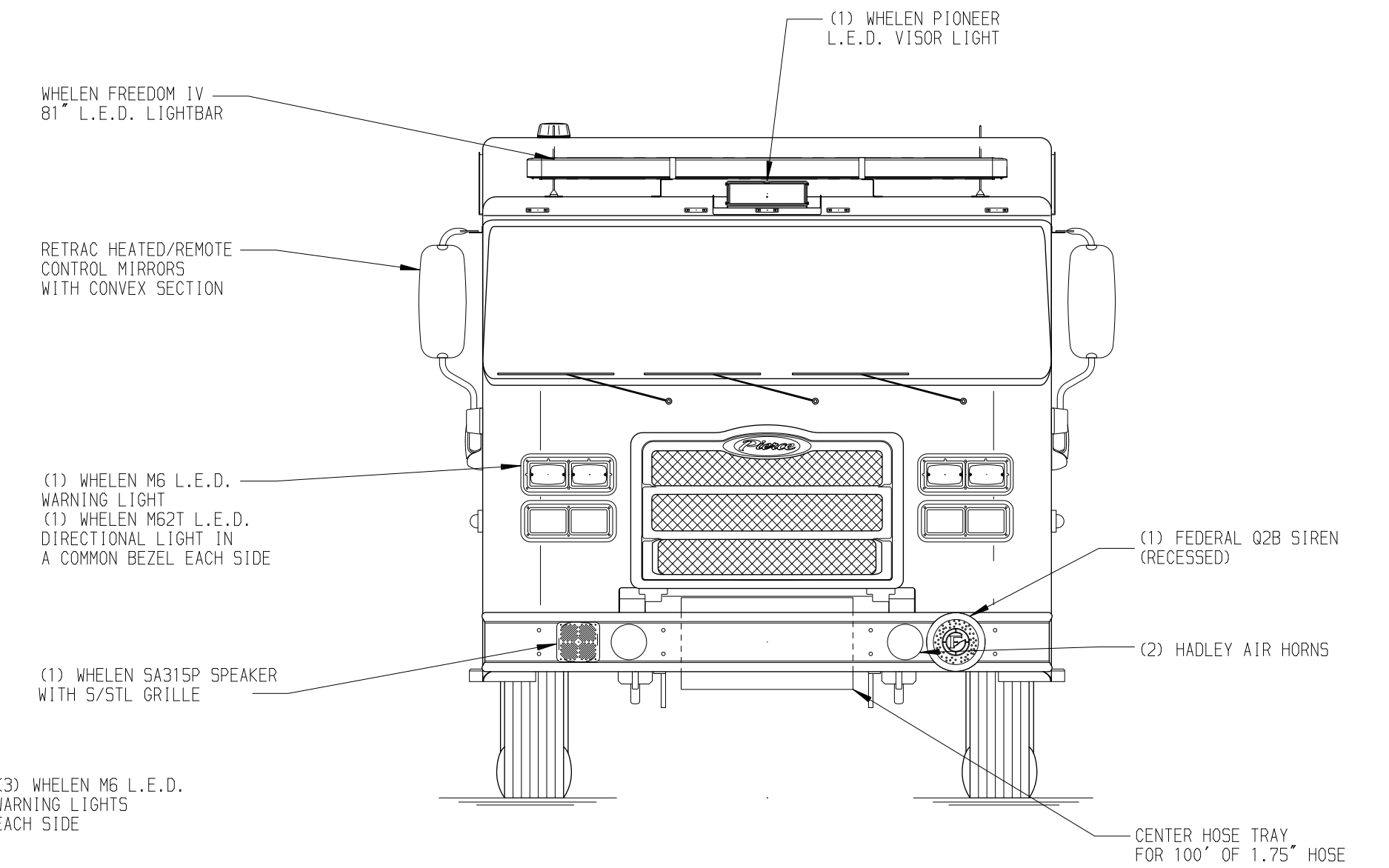
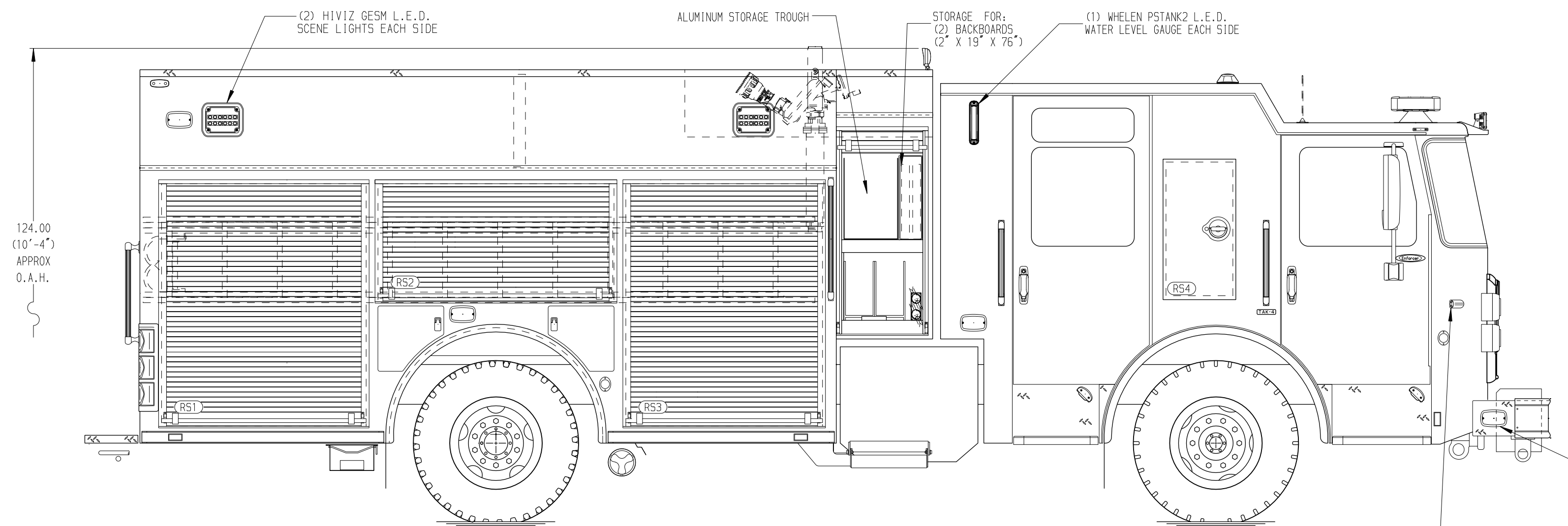
CROSSLAYS, 1.50"
(2) 1.50", Poly Trays, 200'

CROSSLAYS, 2.50"
2.50" Crosslays Not Required

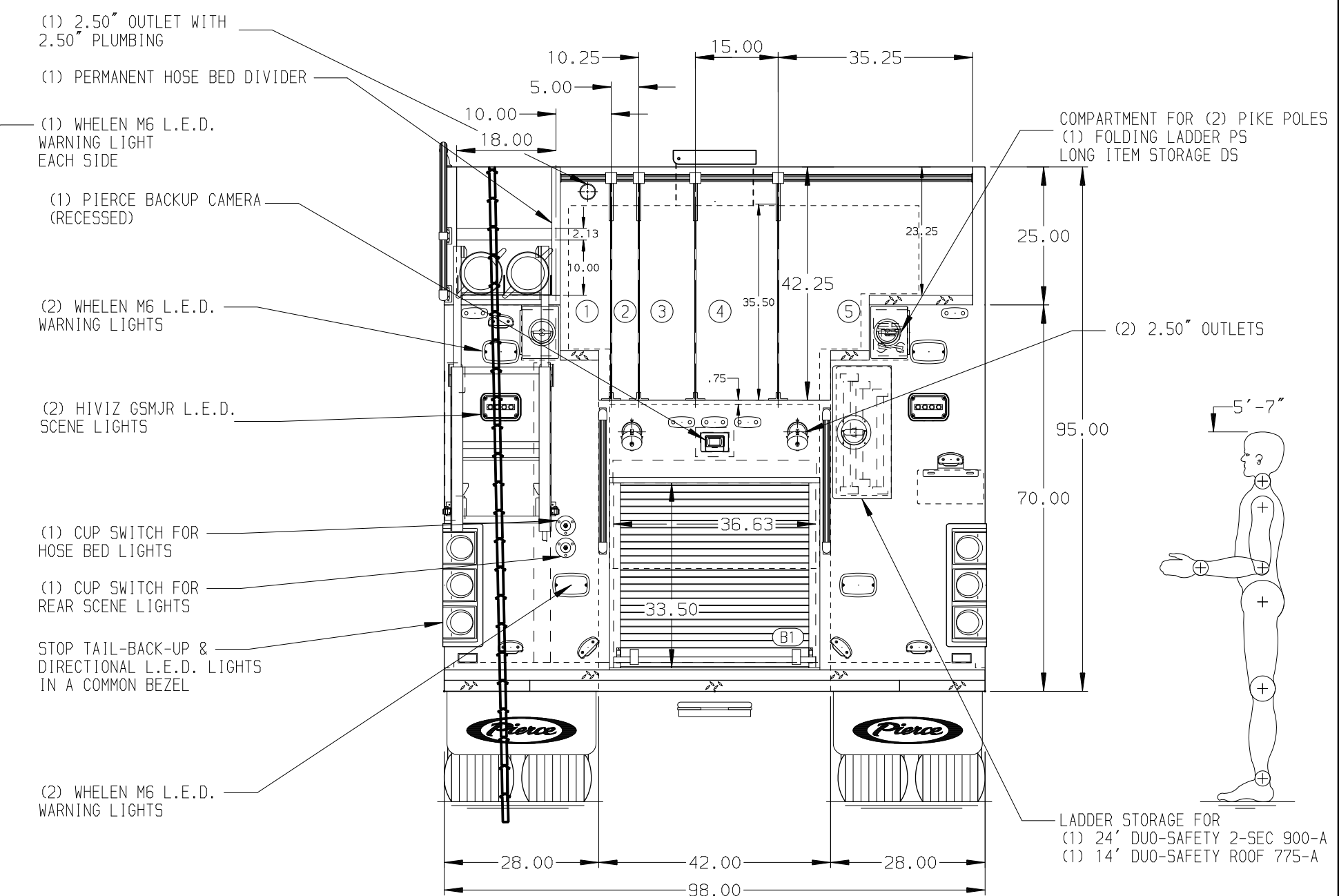
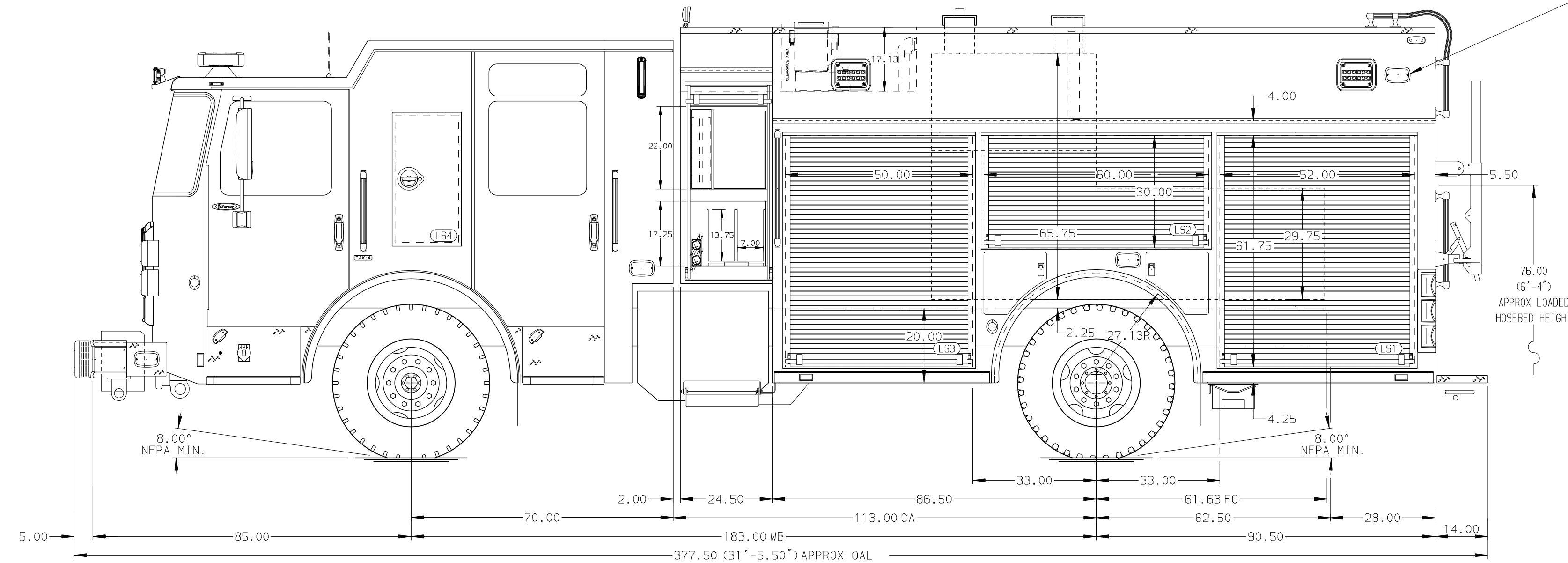
SPEEDLAYS

GENERATOR
Generator Not Required

FOAM SYSTEM
Husky 3 Single Agent Foam System



HOSEBED CAPACITY	
BED 1	150' OF 2.50" D.J. POLY HOSE
BED 2	200' OF 1.75" D.J. POLY HOSE
BED 3	300' OF 1.75" D.J. POLY HOSE (ABOVE) 200' OF 2.50" D.J. POLY HOSE (BELOW)
BED 4	700' OF 2.50" D.J. POLY HOSE
BED 5	800' OF 5.00" D.J. POLY HOSE



NOTE
DIMENSIONS SHOWN ARE APPROXIMATE AND ARE SUBJECT TO MINOR DEVIATIONS AS MAY OCCUR OR BE NECESSARY IN CONSTRUCTION. MINOR DETAILS NOT SHOWN.

- ONE 1.50 OUTLET WITH 2.00 PIPING AND SWIVEL LOCATED IN CENTER BUMPER TRAY
- SHOULDER RECEPTACLE WITH STRAIGHT BLADE NEMA LOCATED IN THE DRIVER SIDE STEPWELL
- AIR INLET WITH DISCONNECT COUPLING IN THE DRIVER SIDE STEPWELL
- BATTERY CHARGER LOCATED PER ORDER
- BATTERY CHARGE INDICATOR LOCATED ON DRIVER SEAT RISER
- TEN ADJUSTABLE SHELVES LOCATED PER ORDER
- TWO FLOOR MOUNTED SLIDE-OUT TRAYS LOCATED PER ORDER
- ONE SLIDE-OUT TRAY LOCATED PER ORDER
- ONE DOUBLE SWING-OUT TOOL GRID SYSTEM LOCATED PER ORDER
- ONE STORAGE COMPARTMENT STOP LOCATED PER ORDER

REV	DATE	BY	CH	ENFORCER
160CT24	JJB	GKH		CHASSIS DATA
08JUL24	JJB	GKH		PIERCE
17MAY24	JJB	GKH		MODEL

		JOB NO.	39228		
		SCALE	DATE		
TITLE	Pierce PUC Pumper Approval Drawing		DRAWN BY	JJB	20MAR24
FOR	Astoria Fire Department		CHECKED BY	MMF	20MAR24
DWG NO.	39228AD		SHEET SIZE	SHEET NO.	
			D	1 OF 1	