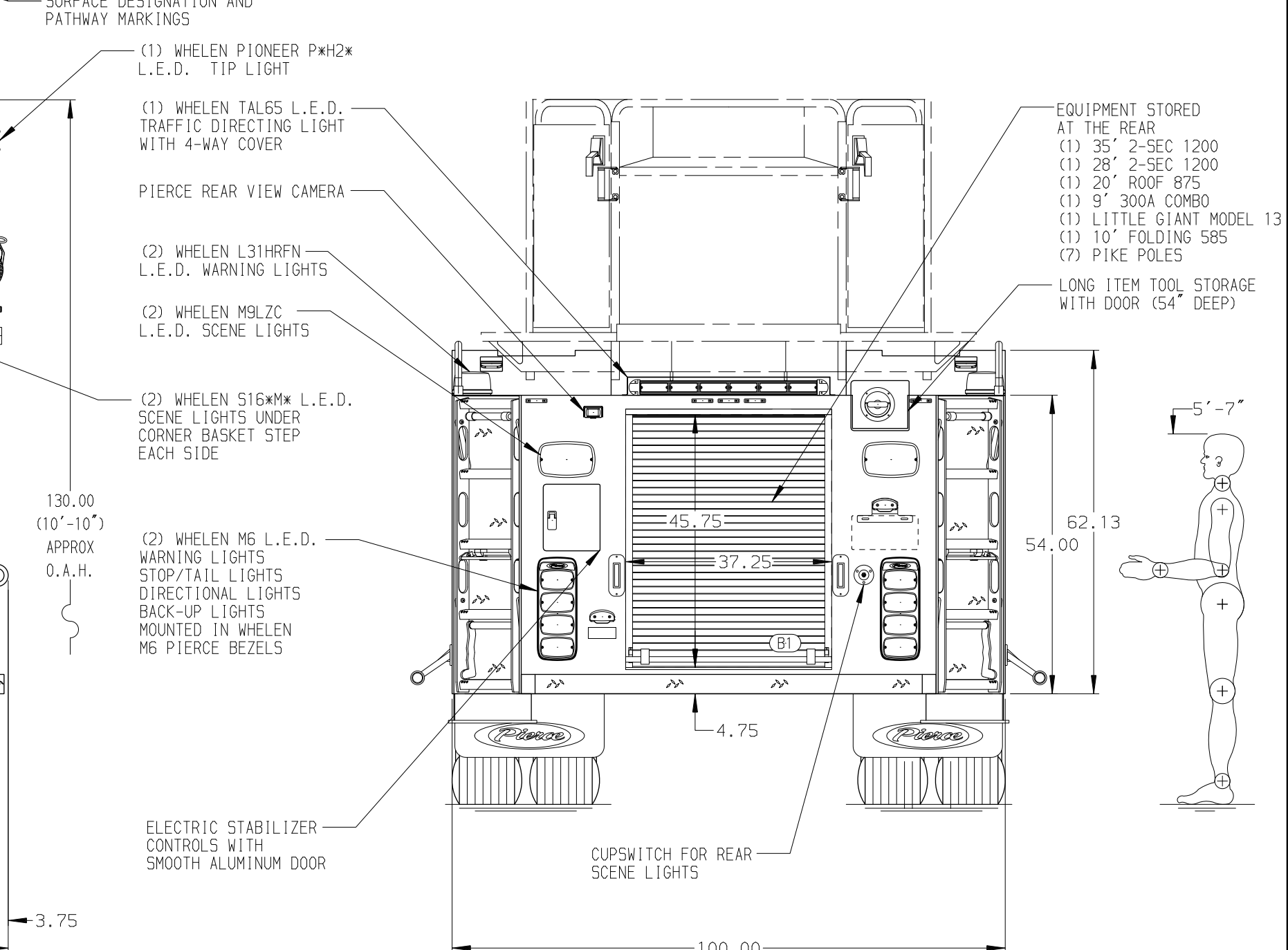
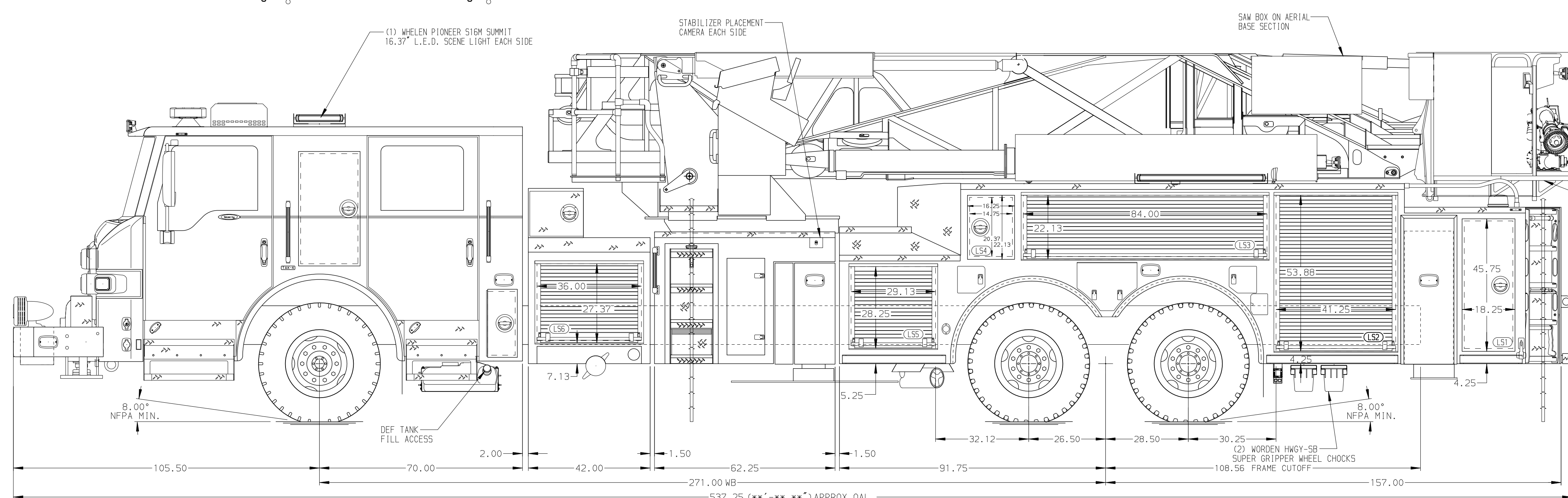


BODY
 100' Ascendant Aerial Tower No Pump Alum Body
COMPT, LEFT SIDE
 Full Height RollUp/Lap Doors
COMPT, RIGHT SIDE
 Full Height RollUp/Lap Doors



CHASSIS Velocity Chassis (Big Block) ENGINE 510 HP Paccar MX13 Engine	CAB 7000 Velocity FR Cab BUMPER 27" Painted Aluminum	AXLE, FRONT, CUSTOM 24,000 Lb TAK-4 Axle AXLE, REAR 54,000 Lb Meritor Axle	TRANSMISSION Allison 6th Gen, 4500 EVS P GENERATOR Generator Not Required	COMPARTMENT-NO PUMP 36" Compartment, No Pump, Lap Door	SAFETY Side Roll and Frontal Impact Protection
--	---	---	--	--	--

NOTE
 DIMENSIONS SHOWN ARE APPROXIMATE AND ARE SUBJECT TO MINOR DEVIATIONS AS MAY OCCUR OR BE NECESSARY IN CONSTRUCTION. MINOR DETAILS NOT SHOWN.

- SHORELINE RECEPTACLE WITH KUSSMAUL SUPER AUTO-EJECT LOCATED ON DRIVER SIDE OF THE CAB CORNER
- AIR INLET WITH AIR EJECT AND COVER ON DRIVERS SIDE CAB CORNER
- BATTERY CHARGER LOCATED PER ORDER
- SIX ADJUSTABLE SHELVES LOCATED PER ORDER
- NON-RAISED AERIAL PEDESTAL
- 3-in-1 LYFCOMBO BRACKETS AT AERIAL BASKET
- ONE 2-WAY FLOOR MOUNTED SLIDE-OUT TRAY PER ORDER
- SEVEN FLOOR MOUNTED SLIDE-OUT TRAYS PER ORDER
- TWO SLIDE-OUT TOOLBOARDS PER ORDER
- TWO SWING-OUT TOOLBOARD PER ORDER
- DC POWER TO AERIAL TIP
- ZEON 10-5 WINCH PER ORDER
- ONE POLY TRAY IN COMPARTMENT PER ORDER
- TWO VERTICAL PARTITION PER ORDER

08AUG24	LWE	ZWE	CHASSIS DATA
26JUN24	LWE	ZWE	MAKE
14MAR24	LWE	ZWE	PIERCE
25JAN24	SHU	ZWE	MODEL
17JAN24	LWE	ZWE	VELOCITY
REV	DATE	BY	CH

Pierce MANUFACTURING INC.		JOB NO.	39097
		SCALE	DATE
		1:24	28JUN23
TITLE		DRAWN BY	29JUN23
100' ASCENDANT AERIAL TOWER AND BODY ASSEMBLY		CHECKED BY	
FOR		NAK	
OSHKOSH FIRE DEPT.		SHEET SIZE	SHEET NO.
OSHKOSH, WI		D	1 OF 1
DWG NO.		39097AD	