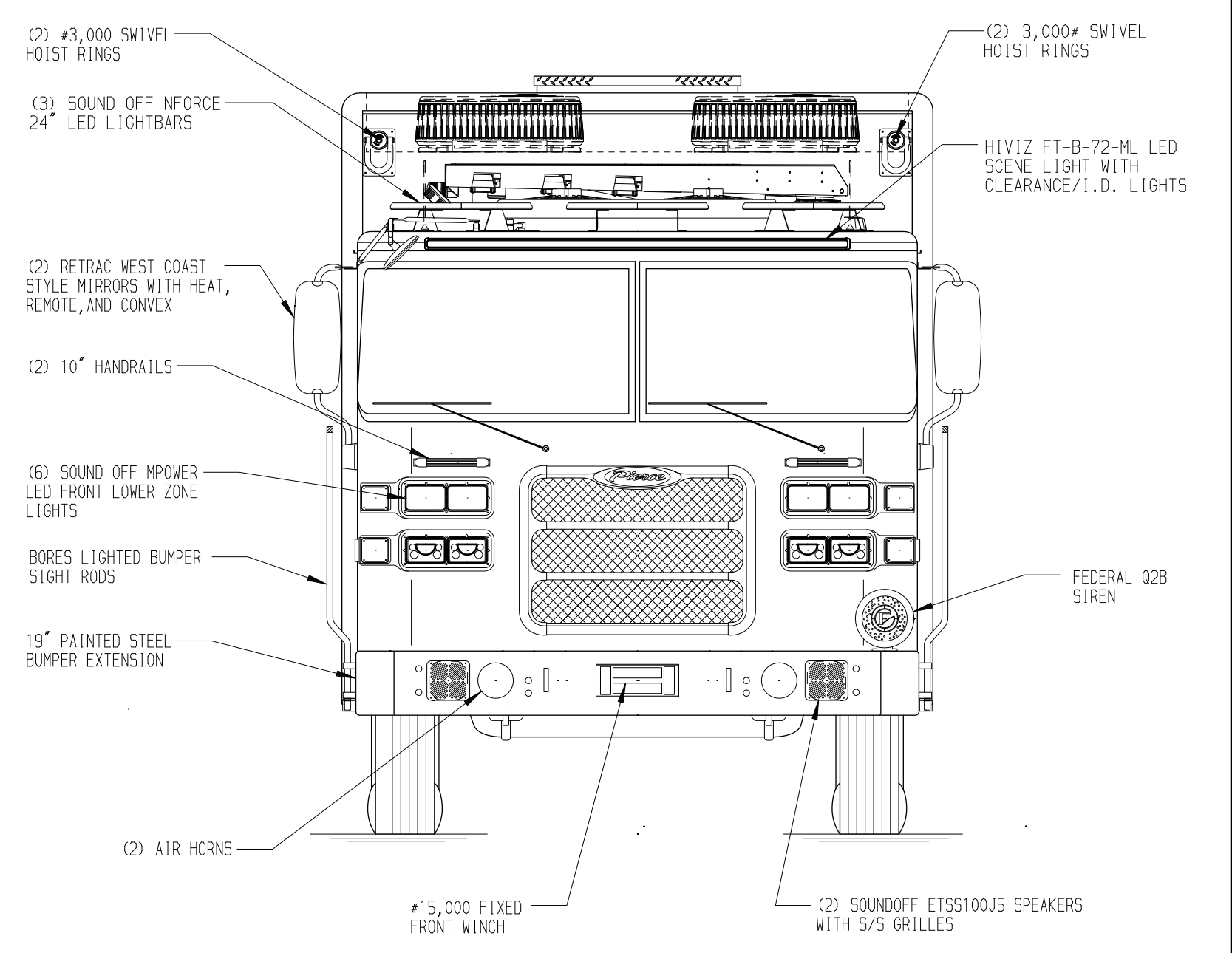
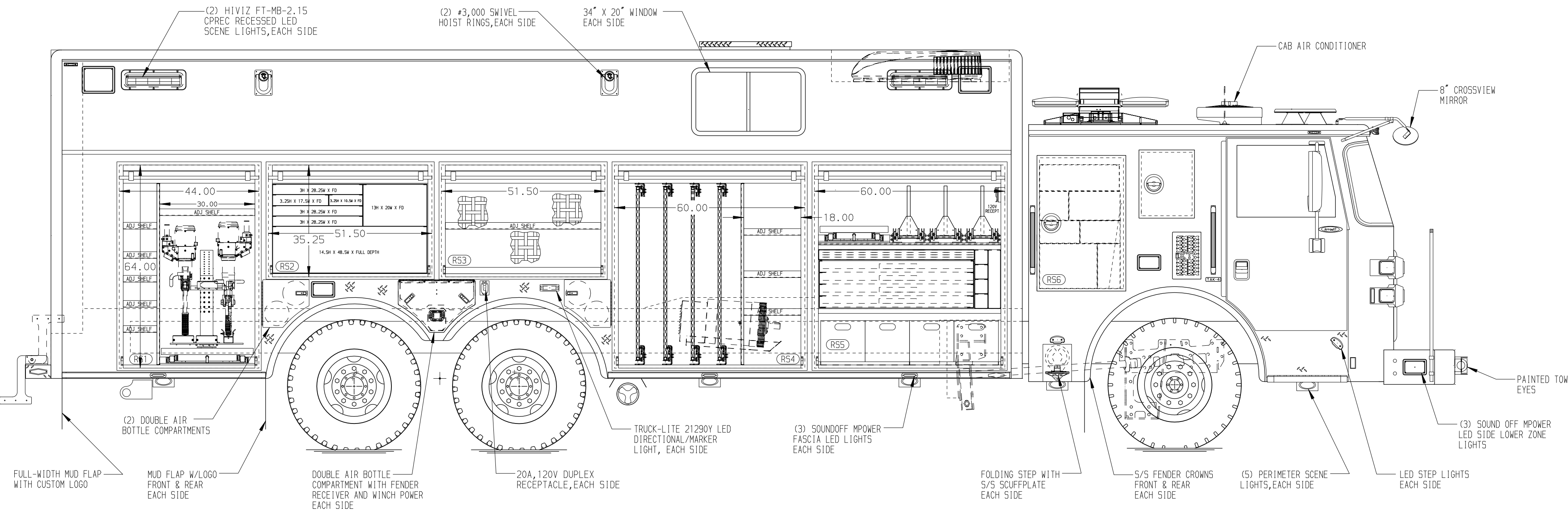
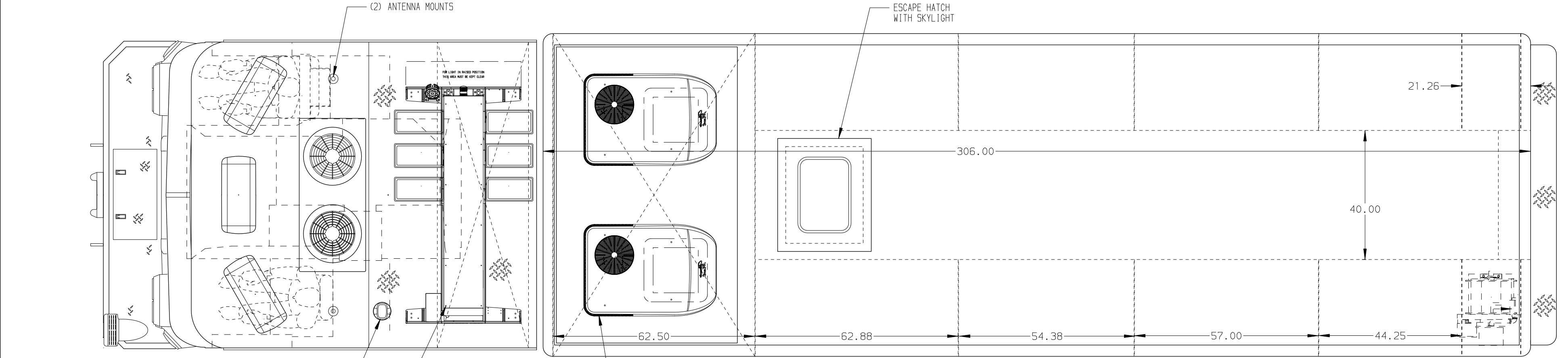


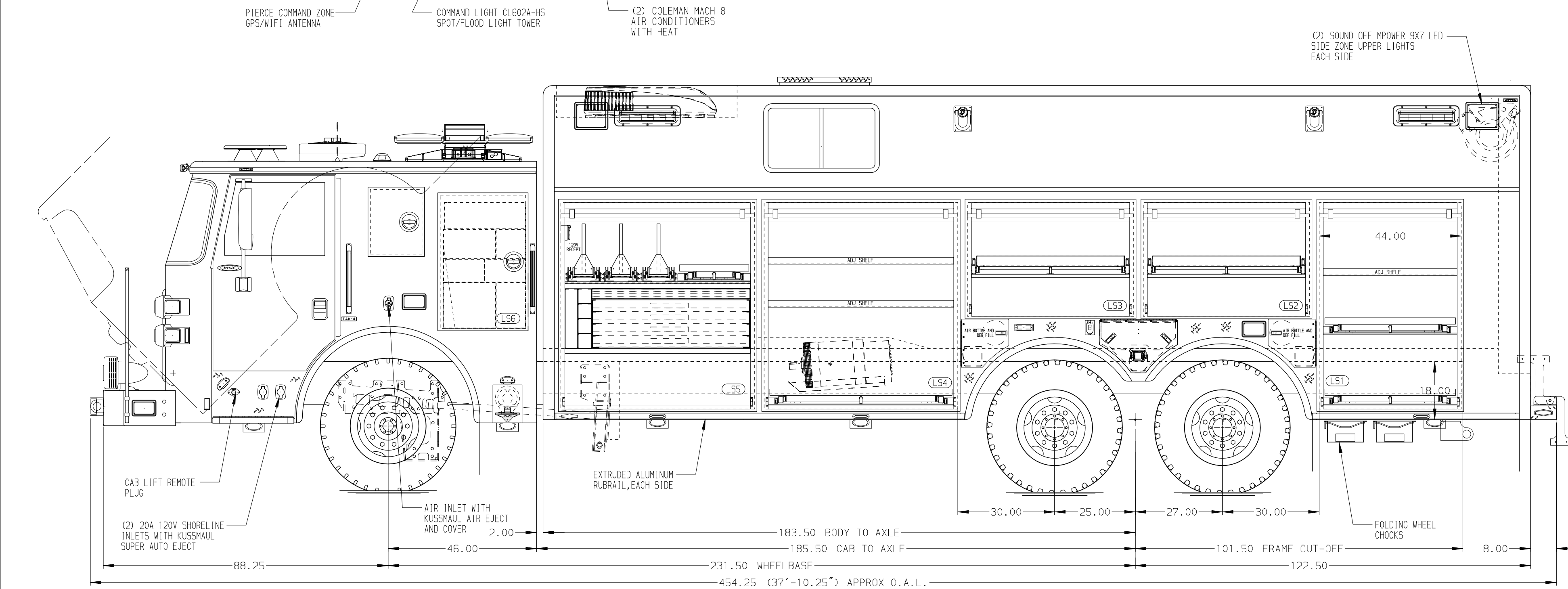
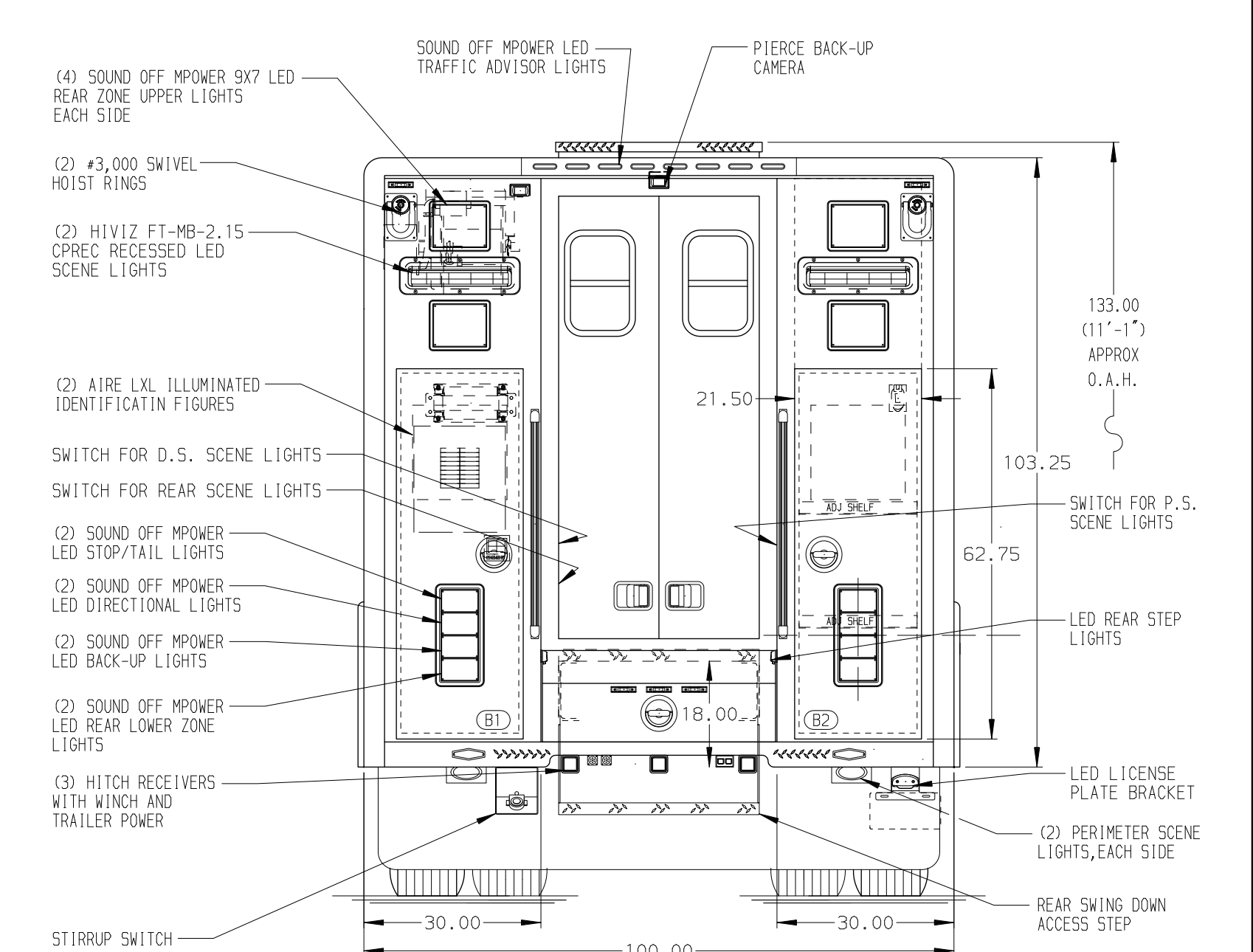
- RIGHT SIDE COMPARTMENTS CONTAIN THE FOLLOWING:**
- COMPARTMENT RS1 CONTAINS:
    - (1) VERTICAL COMPARTMENT DIVIDER
    - (6) STD DEPTH ADJ SHELVES
    - (1) TOOL MOUNTING TURN TABLE WITH SLIDE OUT TRAY
  - COMPARTMENT RS2 CONTAINS:
    - (1) RACK FOR 7 AIR BAGS
  - COMPARTMENT RS3 CONTAINS:
    - (1) STD DEPTH ADJ SHELF WITH ANGLED FLOOR
    - ANGLED TREADPLATE FLOOR FOR CRIBBING
    - CARGO RETENTION NETTING
  - COMPARTMENT RS4 CONTAINS:
    - (1) VERTICAL COMPARTMENT DIVIDER
    - (3) STD DEPTH ADJ SHELVES
    - (4) STD DEPTH ADJ SLIDE OUT TOOLBOARDS
  - COMPARTMENT RS5 CONTAINS:
    - (1) HORIZONTAL FLOOR EXTENSION
    - (1) RACK FOR FOUR FIN FORM BOARDS
    - (1) PLYWOOD RACK
    - (1) 1/2 DEPTH FLOOR MTD SLIDEMASTER TRAY
    - (3) 2-WAY FLOOR MTD SLIDE OUT TOOLBOARDS
    - (4) POLY TOOL BOXES
    - (1) 15/20A, 120V DUPLEX RECEPTACLE
    - (1) TRANSVERSE REINFORCED FALSE FLOOR
    - (1) RACK FOR 5 STORAGE SLOTS
  - COMPARTMENT RS6 CONTAINS:
    - (1) RACK WITH 9 EQUIPMENT TROUGHS



- REAR COMPARTMENTS CONTAIN THE FOLLOWING:**
- COMPARTMENT B1 CONTAINS:
    - PEGBOARD ON REAR AND SIDE WALLS
    - (1) ELECTRIC CORD REEL WITH 200' OF 10/4 YELLOW CORD
    - (1) FOLD-OUT ROLLER GUIDE
    - (1) CIRCUIT BREAKER PANEL
    - (1) GENERATOR METER PANEL
    - (1) COMMAND LIGHT CONTROLLER
  - COMPARTMENT B2 CONTAINS:
    - PEGBOARD ON REAR AND SIDE WALLS
    - (2) SPECIAL DEPTH ADJ SHELVES
    - (1) 15/20A, 120V DUPLEX RECEPTACLE



- LEFT SIDE COMPARTMENTS CONTAIN THE FOLLOWING:**
- COMPARTMENT LS1 CONTAINS:
    - (1) STD DEPTH ADJ SHELF
    - (1) STD DEPTH ADJ SLIDEMASTER TRAY
    - (1) STD DEPTH FLOOR MTD SLIDEMASTER TRAY
  - COMPARTMENT LS2 CONTAINS:
    - (1) STD DEPTH ADJ SLIDEMASTER TILT TRAY
  - COMPARTMENT LS3 CONTAINS:
    - (1) STD DEPTH ADJ SLIDEMASTER TILT TRAY
  - COMPARTMENT LS4 CONTAINS:
    - (2) STD DEPTH ADJ SHELVES
    - (1) STD DEPTH FLOOR MTD SLIDEMASTER TRAY
  - COMPARTMENT LS5 CONTAINS:
    - (1) RACK FOR 5 STORAGE SLOTS
    - (1) HORIZONTAL FLOOR EXTENSION
    - (1) RACK FOR FOUR FIN FORM BOARDS
    - (1) PLYWOOD RACK
    - (1) 1/2 DEPTH FLOOR MTD SLIDEMASTER TRAY
    - (3) 2-WAY FLOOR MTD SLIDE OUT TOOLBOARDS
    - (1) 3-DRAWER C-TECH CABINET
    - (1) 2-DRAWER C-TECH CABINET
    - (1) 15/20A, 120V DUPLEX RECEPTACLE
    - (1) TRANSVERSE REINFORCED FALSE FLOOR
  - COMPARTMENT LS6 CONTAINS:
    - (1) RACK WITH 9 EQUIPMENT TROUGHS



**NOTE**  
DIMENSIONS SHOWN ARE APPROXIMATE AND ARE SUBJECT TO MINOR DEVIATIONS AS MAY OCCUR OR BE NECESSARY IN CONSTRUCTION. MINOR DETAILS NOT SHOWN.

- NOTES:**
- BRUSHED S/S SCUFFPLATE LOCATED ON CAB DOOR JAMBS
  - ALUMINUM TREADPLATE ON CAB ROOF
  - ALUMINUM TREADPLATE ON FLOOR OF CAB
  - BATTERY CHARGE INDICATOR LOCATED ON THE DRIVER'S SEAT WITH BRACKET
  - S/S GUARDS ON ALL BODY ROLL-UP DOORS
  - BRUSHED S/S SCUFFPLATES INSIDE B1, B2, LS6, AND RS6 DOORS
  - AMOR LED LIGHTS IN ALL BODY COMPARTMENTS
  - ALUMINUM TREADPLATE ON BODY FENDER PANELS
  - ONAN 25KW SINGLE PHASE PTO DRIVEN GENERATOR LOCATED BETWEEN THE FRAME RAILS
  - KUSSMAUL CHIEF BATTERY CHARGER LOCATED BEHIND THE DRIVER'S SEAT

CLEAR DOOR WIDTH KEY				CHASSIS DATA
AMOR ROLL UP DOORS:	-2 1/4"	20MAY24	DHE AZU	MAKE
GORTITE ROLL UP DOORS:	-2 1/2"	08MAR24	DHE AZU	PIERCE
PIERCE DOUBLE LAP DOORS:	-4 1/4"	04JAN24	DHE CDK	MODEL
PIERCE LIFT-UP LAP DOORS:	-1 1/2"			REV
(EX: 60" F-F - 2 1/4" = 57 3/4" CLEAR)		DATE	BY	CH
				AX4600

<b>Pierce MANUFACTURING INC.</b>		JOB NO. 39079
TITLE HEAVY DUTY RESCUE WALKIN		SCALE 1:24 DATE
FOR CITY OF NORTH MYRTLE BEACH		DRAWN BY DHE 13DEC23
PID #656		CHECKED BY AZU 14DEC23
DWG NO. 39079AD-SH1		SHEET SIZE D SHEET NO. 1 OF 1
ALAN AXSON		