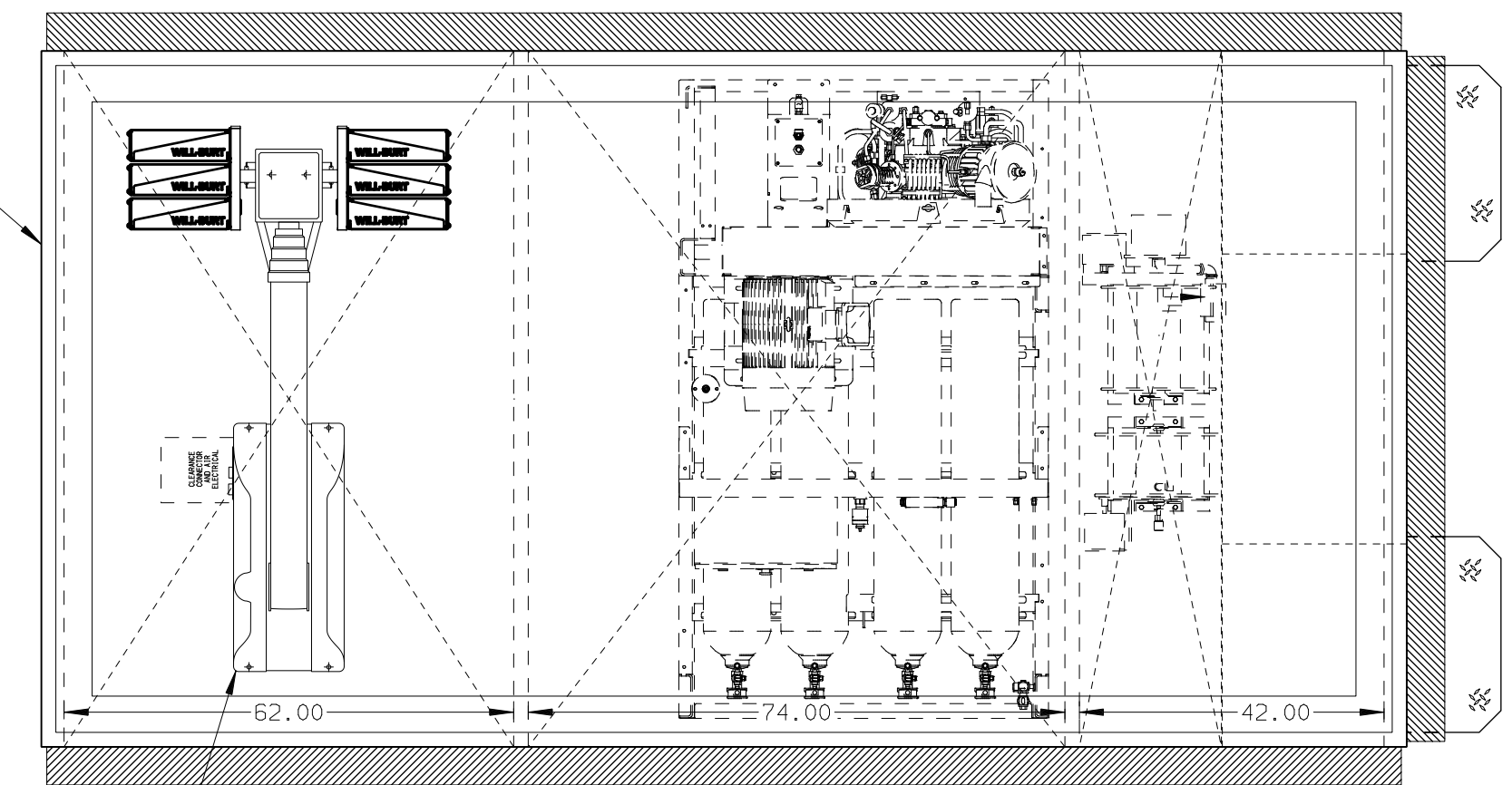
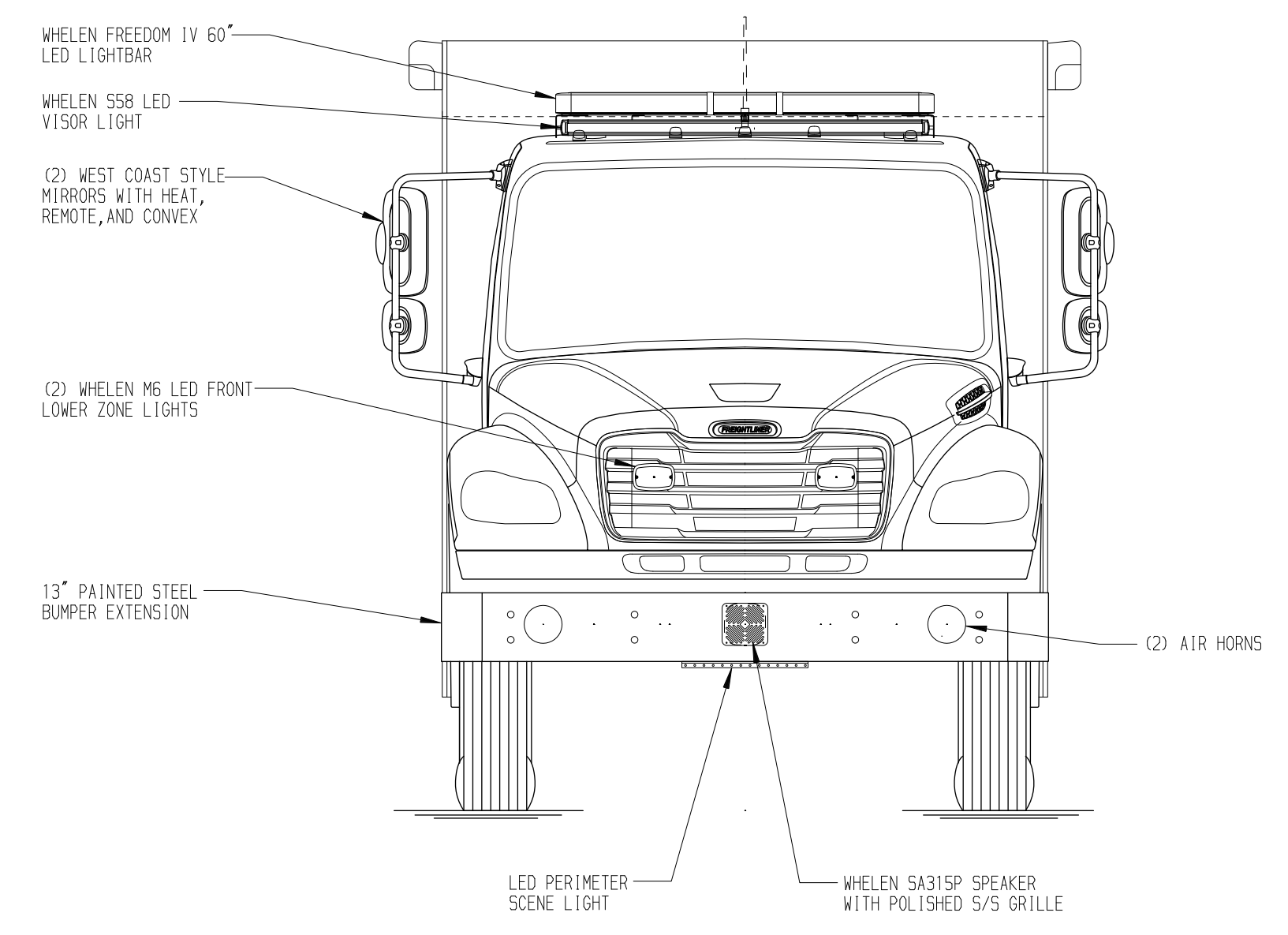
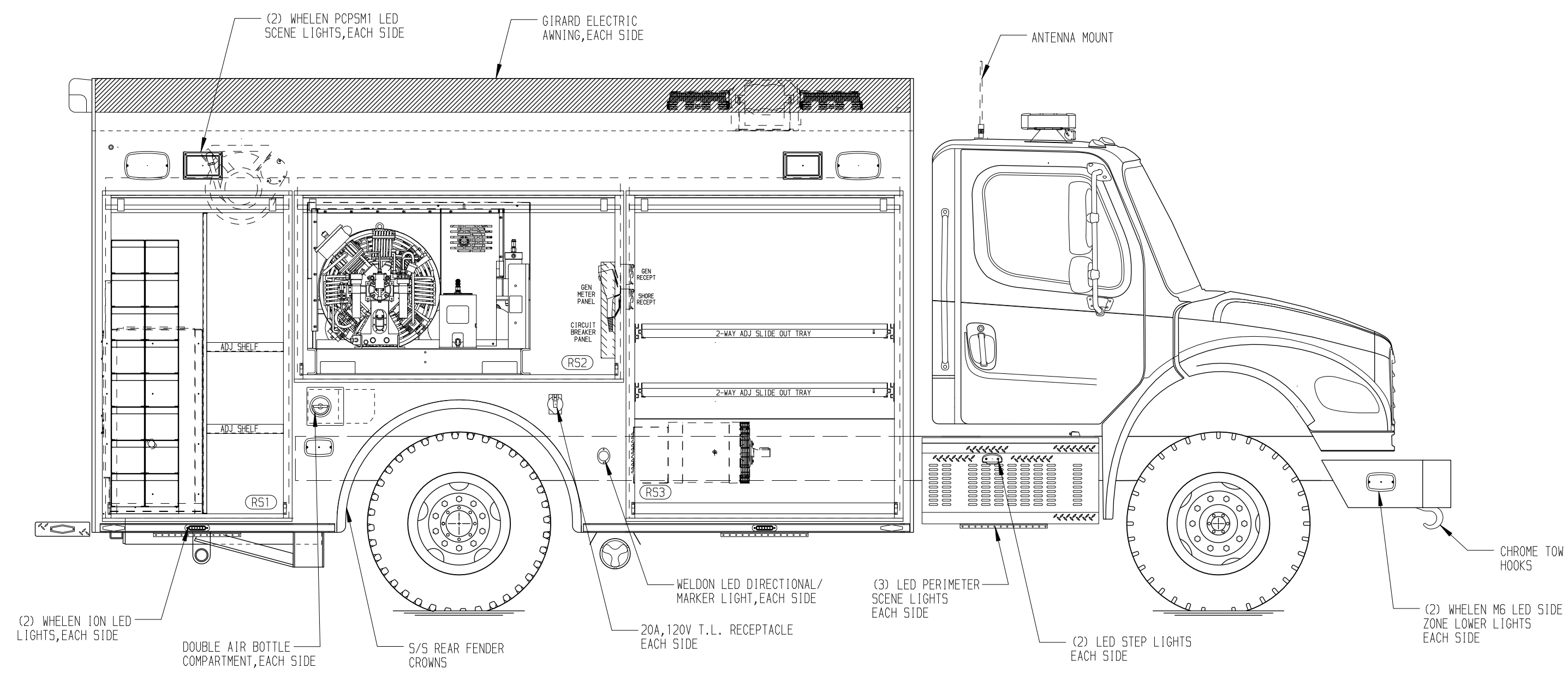
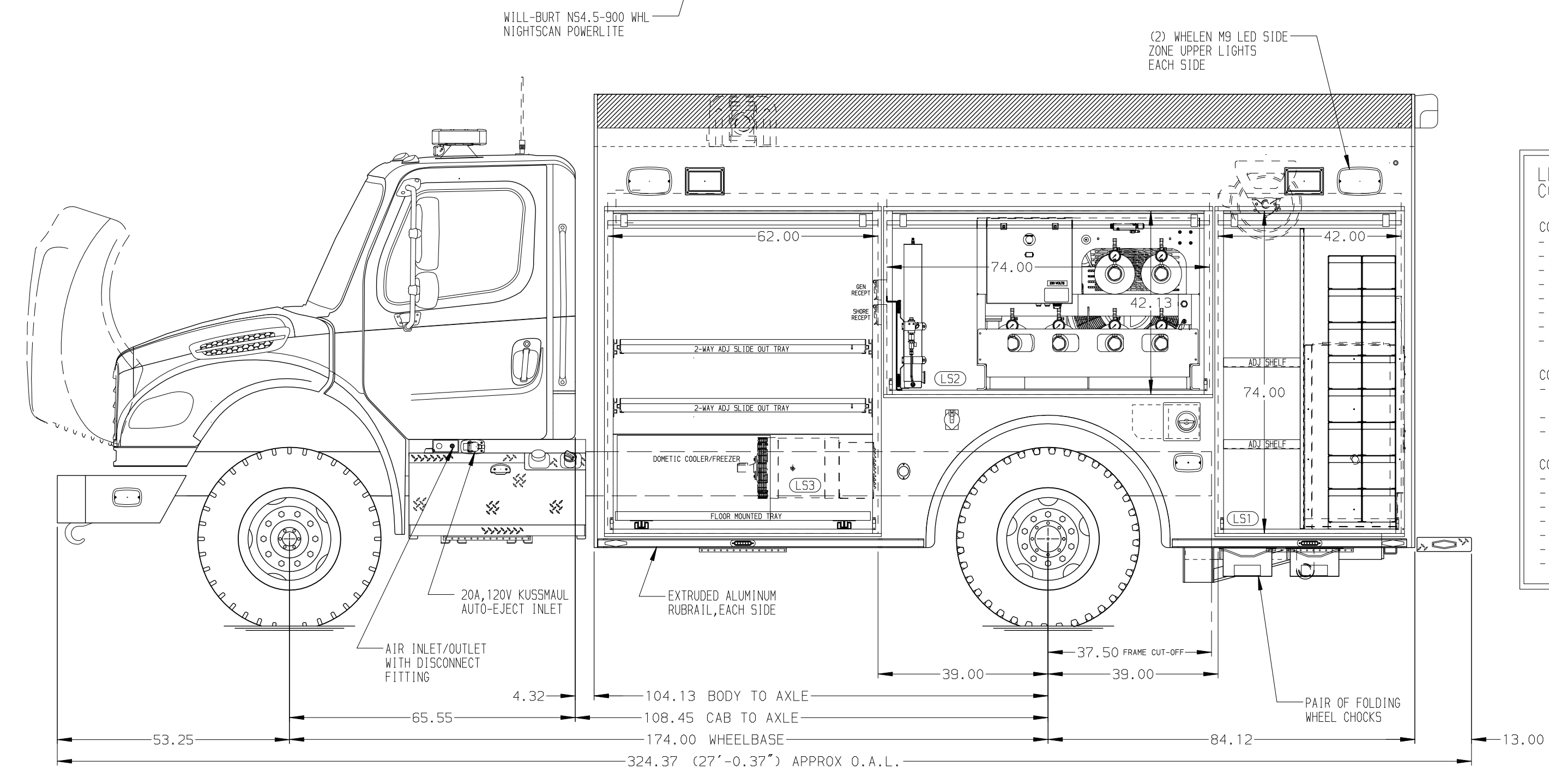


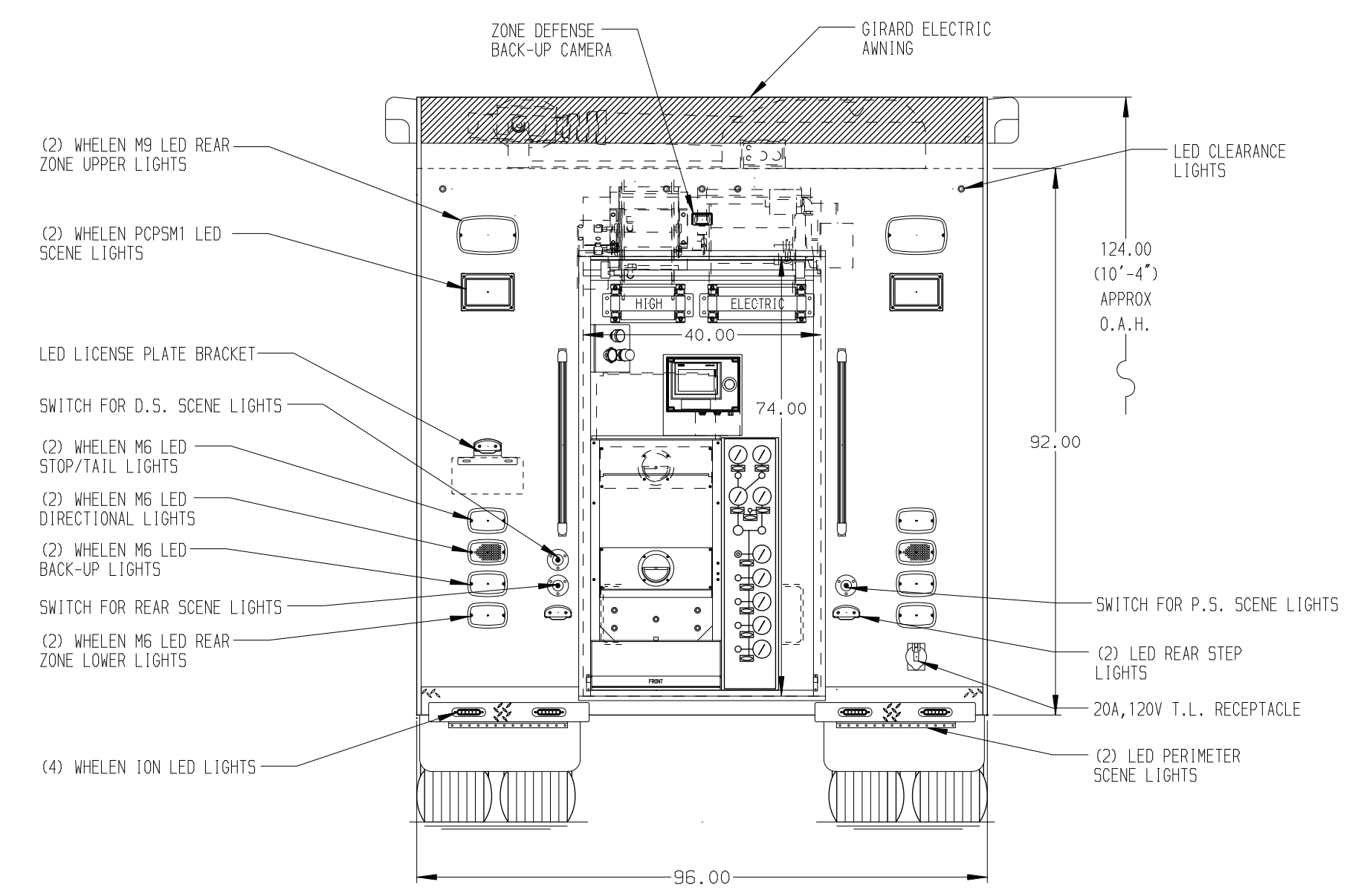
- RIGHT SIDE COMPARTMENTS CONTAIN THE FOLLOWING:**
- COMPARTMENT R51 CONTAINS:**
- (1) VERTICAL COMPARTMENT DIVIDER
 - (1) RACK FOR 16 SCBA BOTTLES
 - (2) 2-WAY ADJ SHELVES
 - (1) PARTIAL REAR WALL DIVIDER
 - BLACK POLY FLOOR IN TRANSVERSE SECTION
- COMPARTMENT R52 CONTAINS:**
- (1) BAUER K12.14-10-E3 BREATHING AIR COMPRESSOR
 - (1) CIRCUIT BREAKER PANEL
 - (1) GENERATOR METER PANEL
 - (1) NIGHTSCAN CONTROLLER
- COMPARTMENT R53 CONTAINS:**
- (2) 2-WAY ADJ SLIDE OUT TRAYS
 - (1) 20A, 120V DUPLEX RECEPTACLE (GEN)
 - (1) 20A, 120V DUPLEX RECEPTACLE (SHORE)
 - SLANTED COMPARTMENT FLOOR



- REAR COMPARTMENT CONTAINS THE FOLLOWING:**
- COMPARTMENT B1 CONTAINS:**
- (1) "SPACE SAVER" 4-BOTTLE FILL ENCLOSURE
 - (1) CASCADE SYSTEM CONTROL PANEL
 - (1) BREATHING AIR COMPRESSOR CONTROLLER
 - (1) HIGH PRESSURE BREATHING AIR REEL WITH 300' OF HOSE
 - (1) ELECTRIC CORD REEL WITH 300' OF 10/4 YELLOW CORD



- LEFT SIDE COMPARTMENTS CONTAIN THE FOLLOWING:**
- COMPARTMENT L51 CONTAINS:**
- (1) VERTICAL COMPARTMENT DIVIDER
 - (1) RACK FOR 16 SCBA BOTTLES
 - (2) 2-WAY ADJ SHELVES
 - (1) PARTIAL REAR WALL DIVIDER
 - BLACK POLY FLOOR IN TRANSVERSE SECTION
- COMPARTMENT L52 CONTAINS:**
- (1) BAUER K12.14-10-E3 BREATHING AIR COMPRESSOR
 - BREATHING AIR PURIFIERS
- COMPARTMENT L53 CONTAINS:**
- (2) 2-WAY ADJ SLIDE OUT TRAYS
 - (1) 20A, 120V DUPLEX RECEPTACLE (GEN)
 - (1) 20A, 120V DUPLEX RECEPTACLE (SHORE)
 - (1) FLOOR MOUNTED TRAY
 - (1) DOMETIC DUAL ZONE COOLER



NOTE
DIMENSIONS SHOWN ARE APPROXIMATE AND ARE SUBJECT TO MINOR DEVIATIONS AS MAY OCCUR OR BE NECESSARY IN CONSTRUCTION. MINOR DETAILS NOT SHOWN.

- NOTES:**
- ONAN 40kW THREE PHASE PTO DRIVEN GENERATOR LOCATED BETWEEN THE FRAME RAILS WITH SPLASH GUARD
 - DAVID CLARK 2-POSITION INTERCOM SYSTEM
 - S/S GUARDS ON ALL BODY ROLL-UP DOORS
 - AMOR LED LIGHTS IN ALL BODY COMPARTMENTS

REV	DATE	BY	CH	CHASSIS DATA
1	28MAY24	DHE	CDK	MAKE
2	22MAR24	DHE	CDK	FREIGHTLINER
3	20MAR24	DHE	CDK	MODEL
4	25JAN24	DHE	CDK	M2-106

MANUFACTURING INC.	JOB NO.	39058
	SCALE	1:24
TITLE	ENCORE RESCUE VEHICLE	DATE
FOR	SPOTSYLVANIA COUNTY FIRE, RESCUE & EMERGENCY MGT	DRAWN BY
DWG NO.	BID #605	DHE
	YANCEY, MICHAEL	CHECKED BY
		CDK
		SHEET SIZE
		D
		SHEET NO.
		1 OF 1

39058AD