

PUMPER BODY

Long Aluminum 2nd Gen Pumper

CHASSIS

Enforcer Chassis

CHASSIS AXLE, FRONT, CUSTOM

18,000 Lb Dana Axle

AXLE, REAR

31,000 Lb Dana Axle

ENGINE

450 HP Cummins L9 Engine

TRANSMISSION

Allison 6th Gen, 3000 EVS P

BUMPER

Non Extended Painted Steel

CAB

6010 Enforcer Cab

BODY TOTAL TANK CAPACITY

1020 Gallon Poly Water Tank

WATER CAPACITY

1000 Gallons of Water

FOAM CELL

20 Gallon Foam Cell, Not Reduced Water

COMPT, PUMPER, REAR

43.50" FF Space Saver Rear Compt

COMPT, PUMPER, LEFT SIDE

161" Lap, Full Height & Depth Front & Rear

COMPT, PUMPER, RIGHT SIDE

161" Lap Full Height Front & Rear FDLER

FIRE SUPPRESSION PUMPHOUSE

48" Control Zone Side Mount

PUMP

1250 GPM Waterous CS

CROSSLAYS, 1.50"

(2) 1.50" Standard Capacity

CROSSLAYS, 2.50"

2.50" Crosslay Not Required

SPEEDLAYS

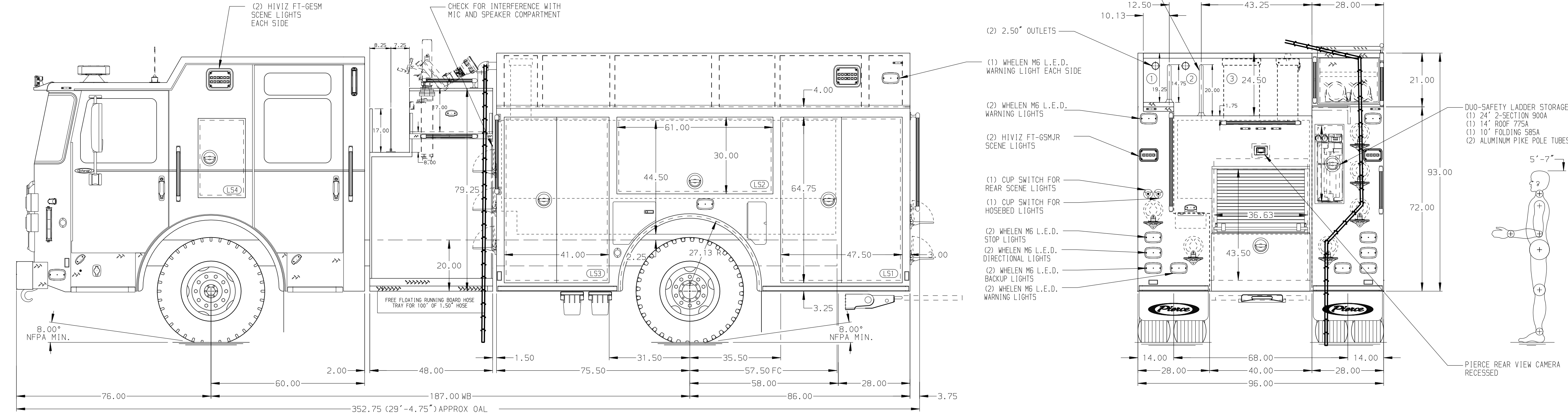
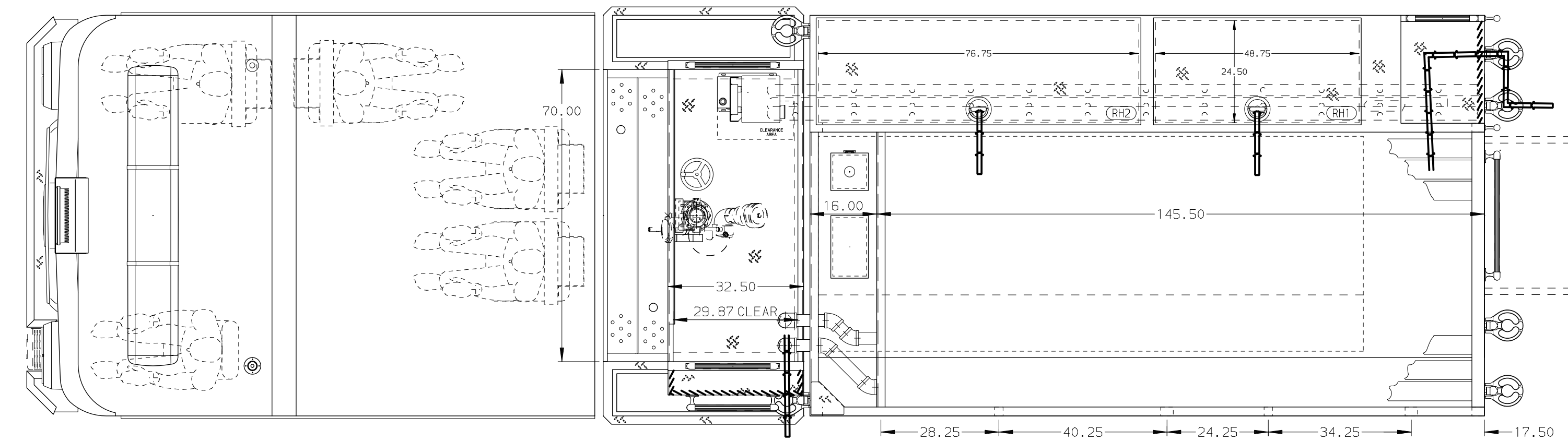
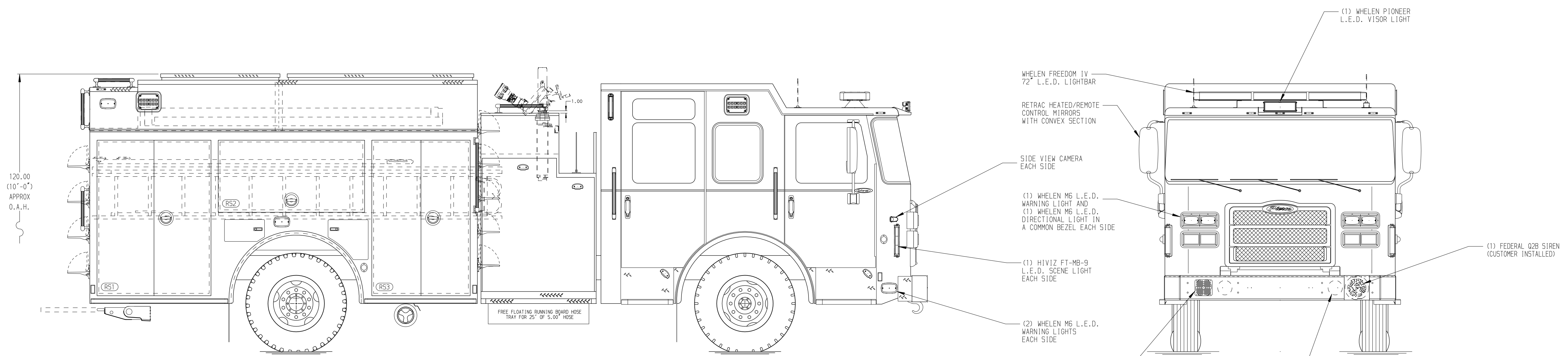
SpeedLays Not Required

GENERATOR

Generator Not Required

FOAM SYSTEM

Husky 3 Single Agent Foam System



MAXIMUM O.A.H. 120.00"

NOTE
 DIMENSIONS SHOWN ARE APPROXIMATE AND ARE SUBJECT TO MINOR DEVIATIONS AS MAY OCCUR OR BE NECESSARY IN CONSTRUCTION. MINOR DETAILS NOT SHOWN.

1. AUTOMATIC TIRE CHAINS
2. SHORELINE RECEPTACLE WITH KUSSMAUL SUPER AUTO-EJECT LOCATED ON DRIVER SIDE STEP WELL
3. AIR INLET WITH DISCONNECT COUPLING IN THE DRIVER SIDE STEPWELL
4. BATTERY CHARGER LOCATED IN COMPARTMENT PER SHOP ORDER
5. BATTERY CHARGE INDICATOR LOCATED PER SHOP ORDER
6. SIX ADJUSTABLE SHELVES IN COMPARTMENTS PER SHOP ORDER
7. TWO FLOOR MOUNTED SLIDE-OUT TRAY IN COMPARTMENT PER SHOP ORDER
8. ONE SWING-OUT TOOLBOARD LOCATED PER SHOP ORDER
9. ONE SLIDE-OUT TRAY LOCATED PER SHOP ORDER
10. PAC TRAC LOCATED THE BACK WALLS OF COMPARTMENTS LOCATED PER SHOP ORDER

| REV | DATE | BY | CH | ENFORCER |
|---------|------|-----|----|--------------|
| 22APR24 | JJB | JLL | | CHASSIS DATA |
| 22APR24 | JJB | JLL | | PIERCE |
| 20FEB24 | JJB | JLL | | MODEL |

| | | | |
|---------|--------------------------------|------------|-----------|
| | | JOB NO. | 39039 |
| | | SCALE | DATE |
| TITLE | Pierce Pumper Approval Drawing | DRAWN BY | JJB |
| FOR | Newport Fire Department | CHECKED BY | MMF |
| DWG NO. | 39039AD | SHEET SIZE | SHEET NO. |
| | | D | 1 OF 1 |