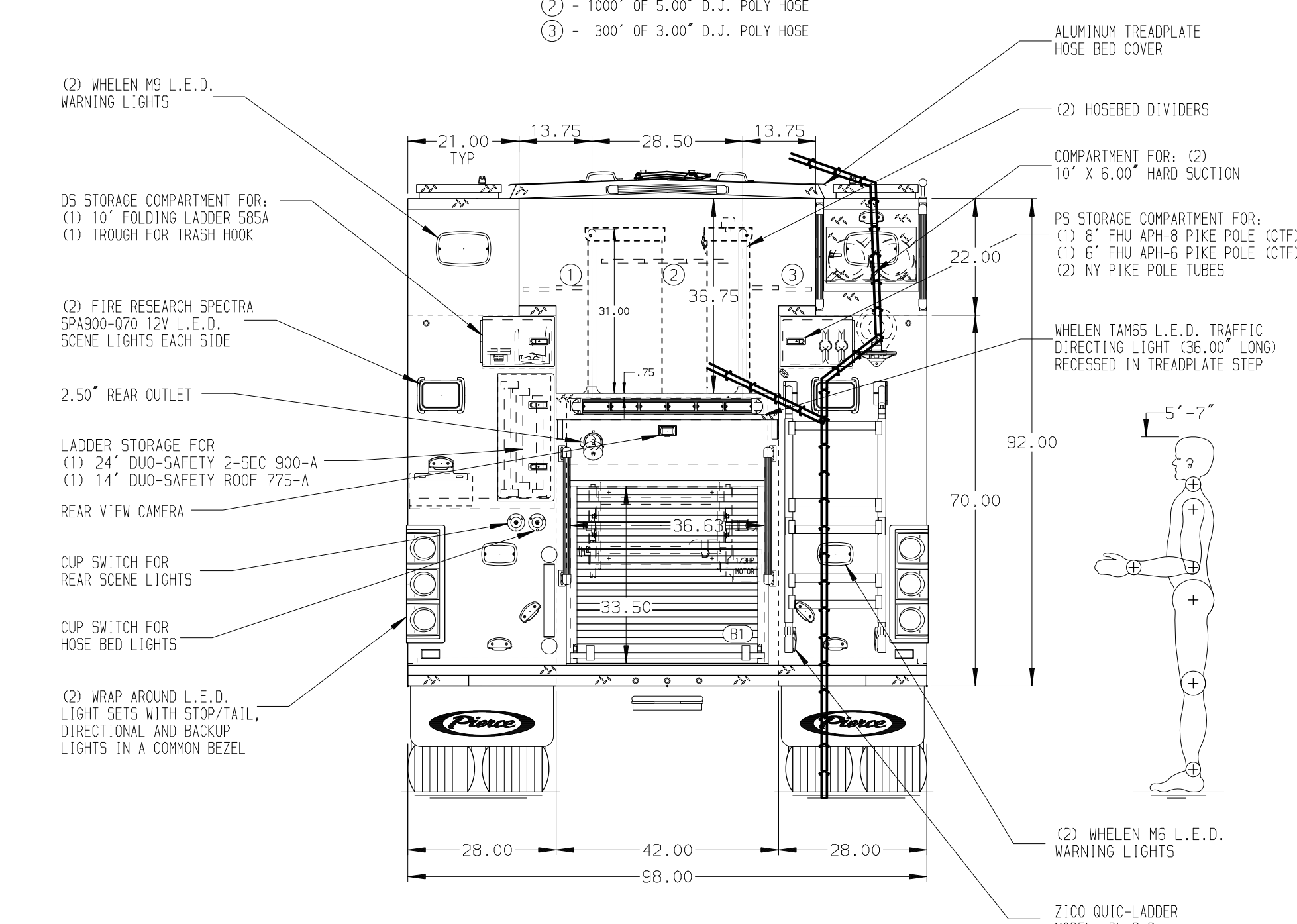
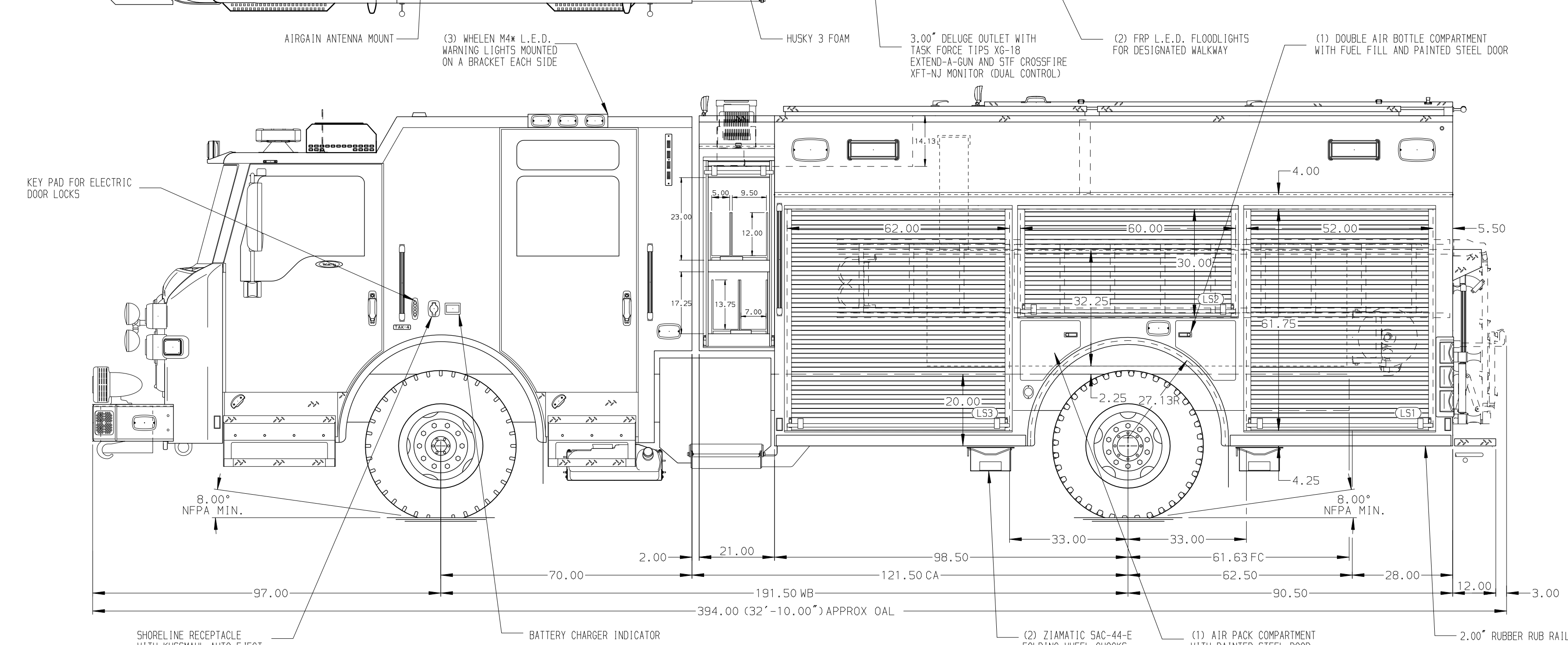


SURFACE DESIGNATION AND PATHWAY MARKINGS

- HOSEBED CAPACITIES
- ① - 300' OF 3.00" D.J. POLY HOSE
 - ② - 1000' OF 5.00" D.J. POLY HOSE
 - ③ - 300' OF 3.00" D.J. POLY HOSE



ALUMINUM BODY MAXIMUM O.A.L. 410.00" SIDE ROLL AND FRONTAL IMPACT PROTECTION

NOTE
DIMENSIONS SHOWN ARE APPROXIMATE AND ARE SUBJECT TO MINOR DEVIATIONS AS MAY OCCUR OR BE NECESSARY IN CONSTRUCTION. MINOR DETAILS NOT SHOWN.

1. DEF TANK MOUNTED UNDER CAB ON THE DRIVER'S SIDE
2. DUAL L.E.D. LIGHT STRIPS LOCATED IN HOSE BED
3. ONE HANNAY EFG4130-17-18 ELECTRIC REWIND BOOSTER REEL WITH CAPACITY FOR 150' OF 0.75" HOSE IN COMPARTMENT B1
4. MODEL T3 LITTLE GIANT LADDER (CTF) IN RS2

REV	DATE	BY	CH	VELOCITY FR	CHASSIS DATA	TITLE
29JUL24	JJB	CHR			MAKE	1500 GPM, 525G TANK, 500G WATER, 25G FOAM
26JUN24	JJB	CHR			MODEL	189" PUC PUMPER, PACCAR
					FOR	WILLIAMSON COUNTY ESD #2 - SAM BASS FIRE DEPARTMENT ROUND ROCK, TEXAS
					DWG NO.	39022AD

Pierce MANUFACTURING INC.

JOB NO. 39022

SCALE 1:24 DATE

DRAWN BY JJB 19APR24

CHECKED BY SJS 19APR24

SHEET SIZE D SHEET NO. 1 OF 1