

PUMPER BODY

Long Aluminum 2nd Gen Pumper

CHASSIS

Enforcer Chassis

CHASSIS AXLE, FRONT, CUSTOM

22,800 Lb TAK-4 Axle

AXLE, REAR

31,000 Lb Dana Axle

ENGINE

500 HP Cummins X12 Engine

TRANSMISSION

Allison 6th Gen, 4000 EVS P

BUMPER

19" Extended Stainless Steel

CAB

6010 Enforcer Cab

BODY

TOTAL TANK CAPACITY

750 Gallon Poly Tank

WATER CAPACITY

730 Gallons of Water

FOAM CELL

20 Gallon Foam Cell

COMPT, PUMPER, REAR

37.75" FF RollUp Rear Compt

COMPT, PUMPER, LEFT SIDE

161" LAP Full Height & Depth Front & Rear

COMPT, PUMPER, RIGHT SIDE

161" LAP Full Height Front & Rear FDLER

FIRE SUPPRESSION PUMPHOUSE

48" Control Zone Side Mount

PUMP

1500 GPM Waterous CSU

CROSSLAYS, 1.50"

(2) 1.50" Standard Capacity

CROSSLAYS, 2.50"

2.50" Crosslay Not Required

SPEEDLAYS

SpeedLays Not Required

GENERATOR

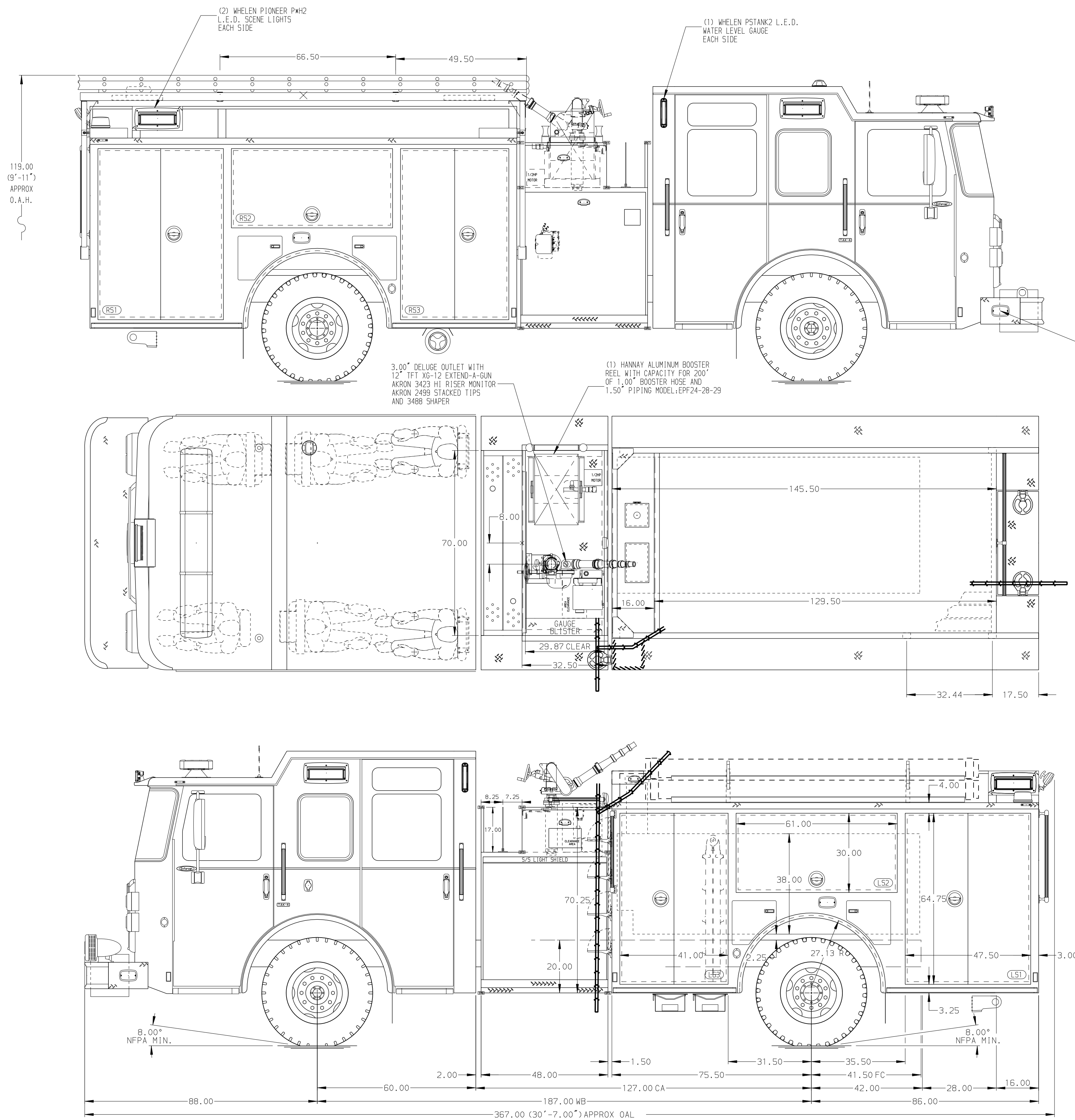
Generator Not Required

FOAM SYSTEM

Husky 3 Single Agent Foam System

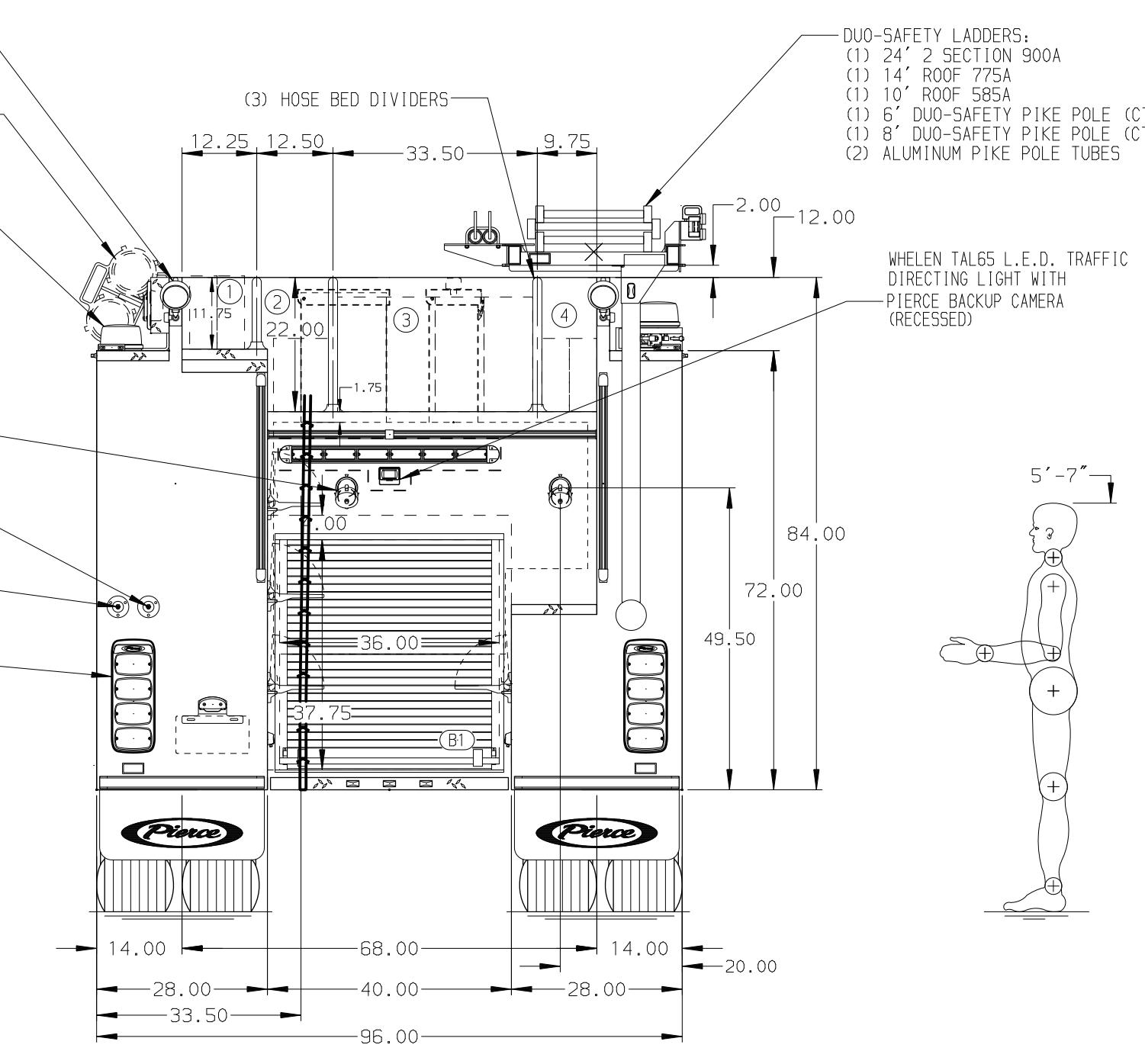
SAFETY

Side Roll and Frontal Impact Protection



HOSEBED CAPACITY

BED 1	300' OF 2.50" D.J. POLY HOSE
BED 2	300' OF 2.50" D.J. POLY HOSE
BED 3	1000' OF 5.00" D.J. POLY HOSE
BED 4	300' OF 2.50" D.J. POLY HOSE



NOTE
DIMENSIONS SHOWN ARE APPROXIMATE AND ARE SUBJECT TO MINOR DEVIATIONS AS MAY OCCUR OR BE NECESSARY IN CONSTRUCTION. MINOR DETAILS NOT SHOWN.

- ONE 1.50 OUTLET WITH 2.00 PIPING AND SWIVEL LOCATED IN CENTER BUMPER TRAY
- SHORELINE RECEPTACLE WITH KUSSMAUL SUPER AUTO-EJECT LOCATED ON DRIVER SIDE STEPWELL
- AIR INLET WITH DISCONNECT COUPLING IN THE DRIVER SIDE STEPWELL
- BATTERY CHARGER LOCATED PER ORDER
- EIGHT ADJUSTABLE SHELVES LOCATED PER ORDER
- THREE FLOOR MOUNTED SLIDE-OUT TRAY LOCATED PER ORDER
- ONE SWING-OUT TOOLBOARD LOCATED PER ORDER
- ONSPOT AUTOMATIC FIRE CHAINS TO BE PROVIDED AT REAR
- BATTERY CHARGER INDICATOR LOCATED ON DRIVER SEAT RISER
- LITTLE GIANT LADDER LOCATED IN COMPARTMENT PER ORDER

REV	DATE	BY	CH	ENFORCER
1	10DEC24	JAM	GKH	MAKE
2	09SEP24	JAM	GKH	PIERCE
3	12JUL24	JAM	GKH	MODEL

Pierce MANUFACTURING INC.		JOB NO.	38994
TITLE		SCALE	DATE
Pierce Pumper Approval Drawing		1:24	
FOR		DRAWN BY	06NOV23
Upper Pine Fire Protection District		CHECKED BY	07NOV23
DWG NO.		SHEET SIZE	SHEET NO.
38994AD		D	1 OF 1