

RIGHT SIDE COMPARTMENTS CONTAIN THE FOLLOWING:

COMPARTMENT R51 CONTAINS:

- (1) STD DEPTH ADJ SHELF
- (2) STD DEPTH ADJ SLIDE OUT/TILT TRAYS
- (1) FLOOR MOUNTED TRAY
- (6) POLY TOOL BOXES
- (2) HYDRAULIC TOOL MOUNTING BRACKETS
- (1) 15/20A, 120V 4-PLACE RECEPTACLE

COMPARTMENT R52 CONTAINS:

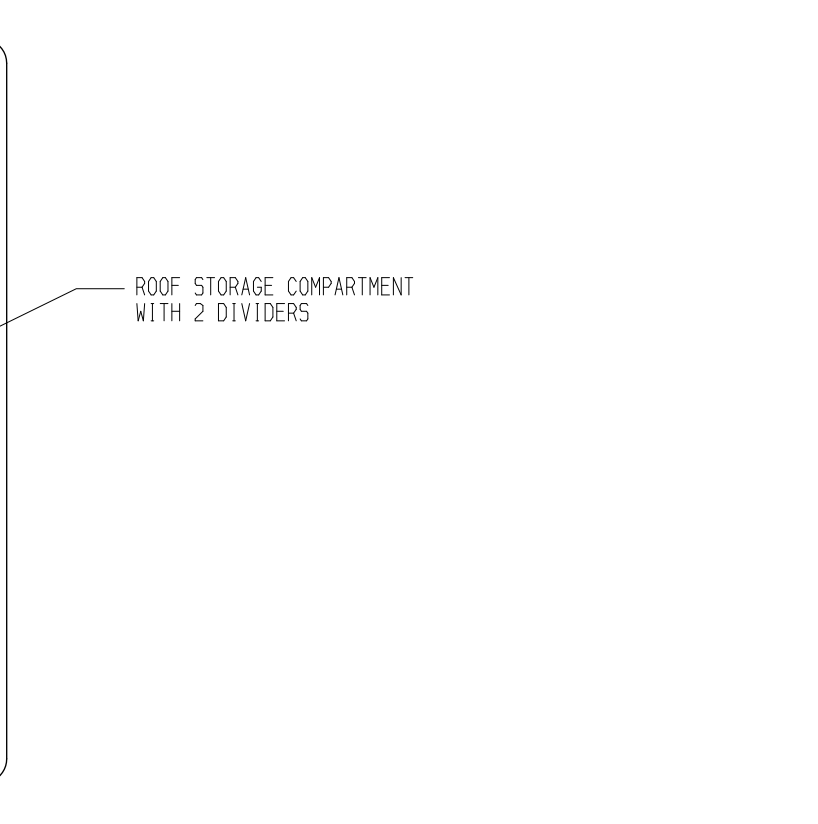
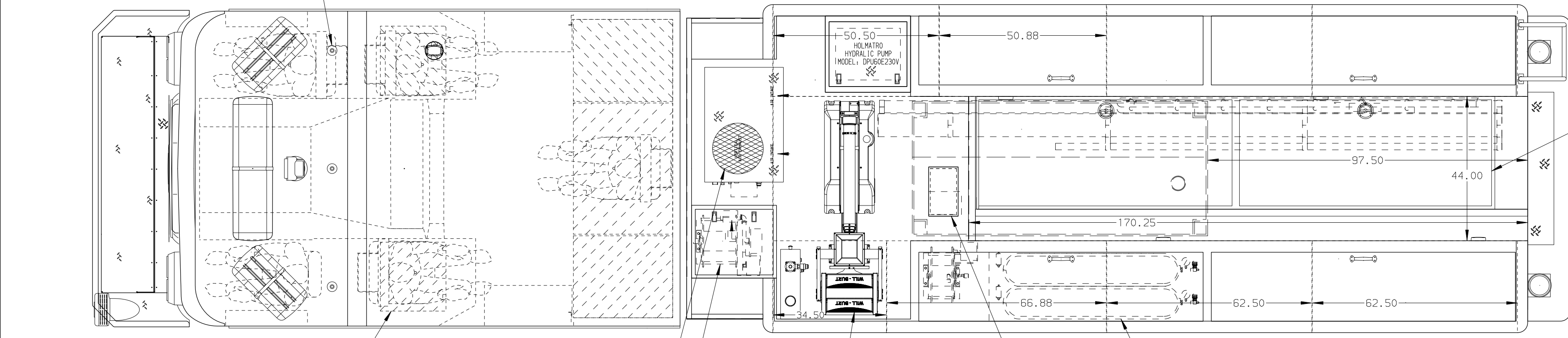
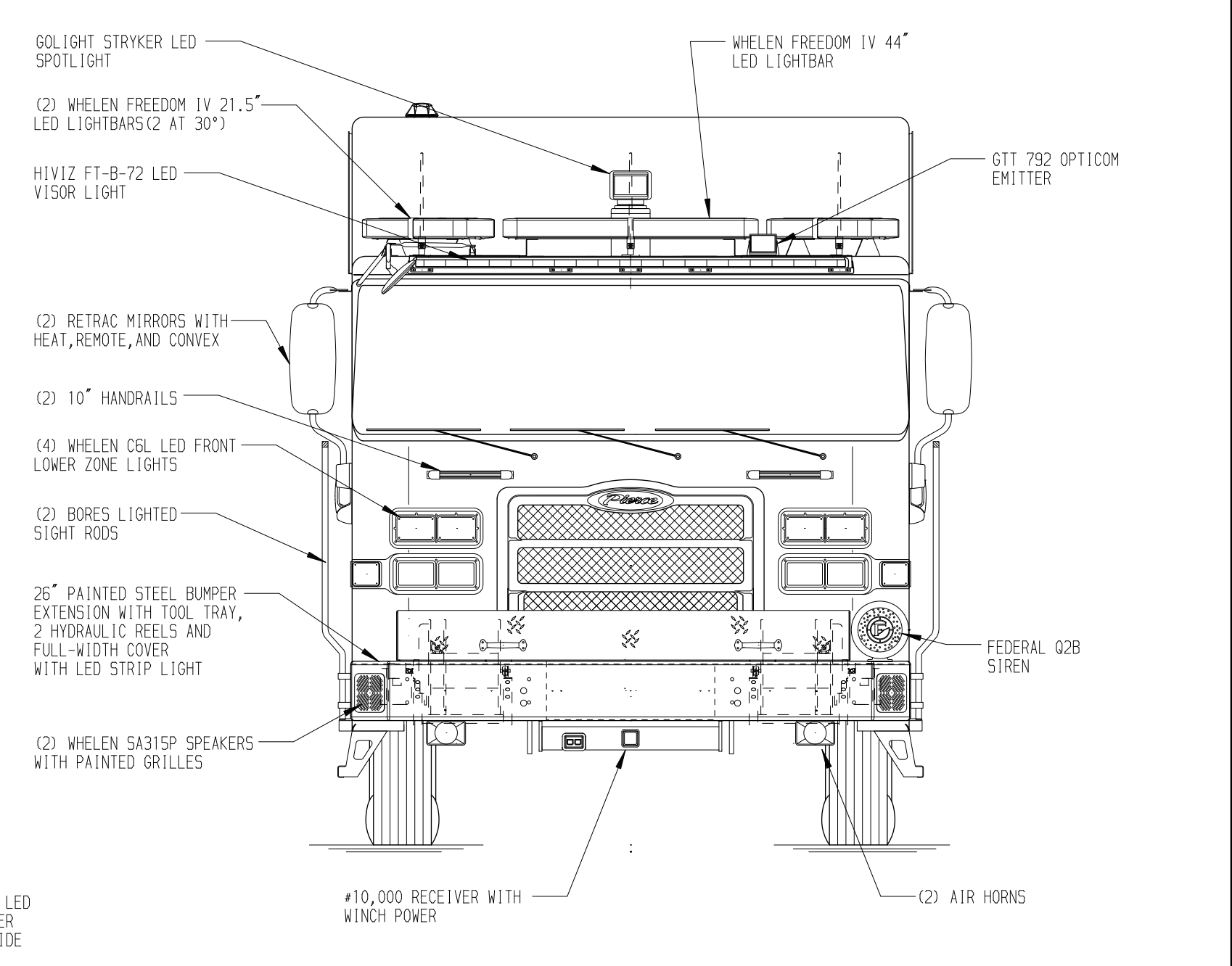
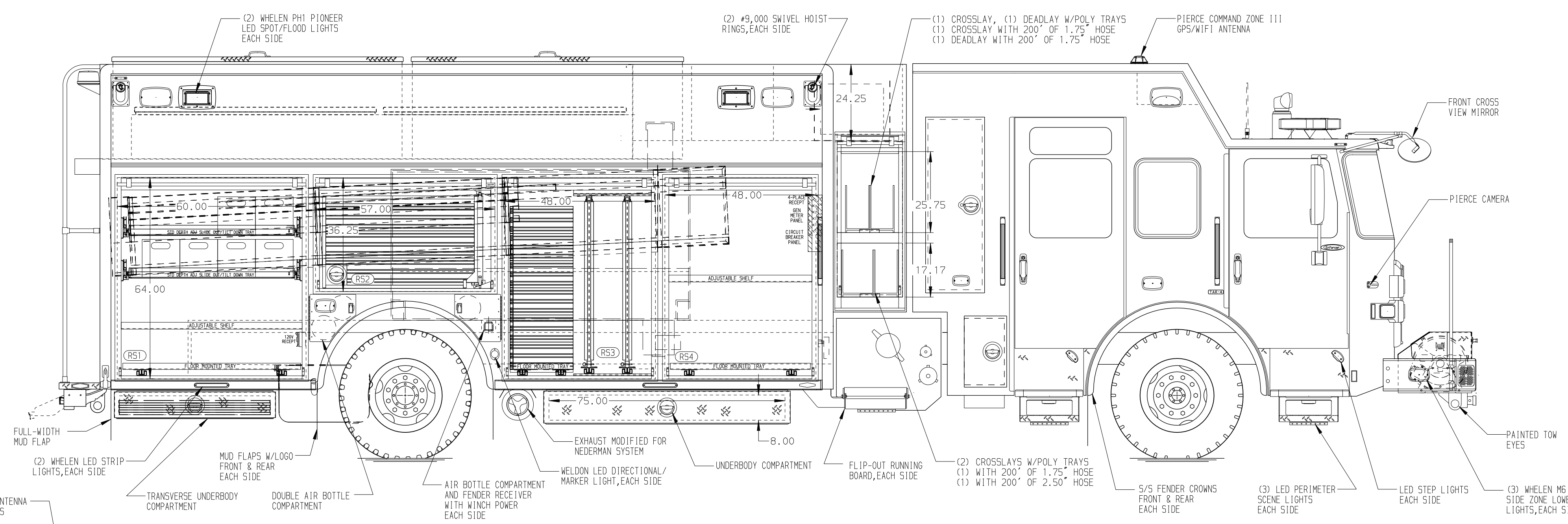
- (2) SWING OUT TOOLBOARDS W/PAC-TRAC
- PAC-TRAC ON BACK WALL OF COMPARTMENT

COMPARTMENT R53 CONTAINS:

- (1) STD DEPTH FLOOR MTD TRAY WITH DOWNTURNED FRONT LIP AND PAC-TRAC
- PAC-TRAC ON RIGHT WALL OF COMPARTMENT
- (1) STD DEPTH SLIDE OUT TOOLBOARD WITH PAC-TRAC

COMPARTMENT R54 CONTAINS:

- (1) CAB LIFT CONTROLLER
- (1) STD DEPTH ADJ SHELF
- (1) FLOOR MOUNTED TRAY
- (1) CIRCUIT BREAKER PANEL
- (1) GENERATOR METER PANEL
- (1) 15/20A, 120V 4-PLACE RECEPTACLE

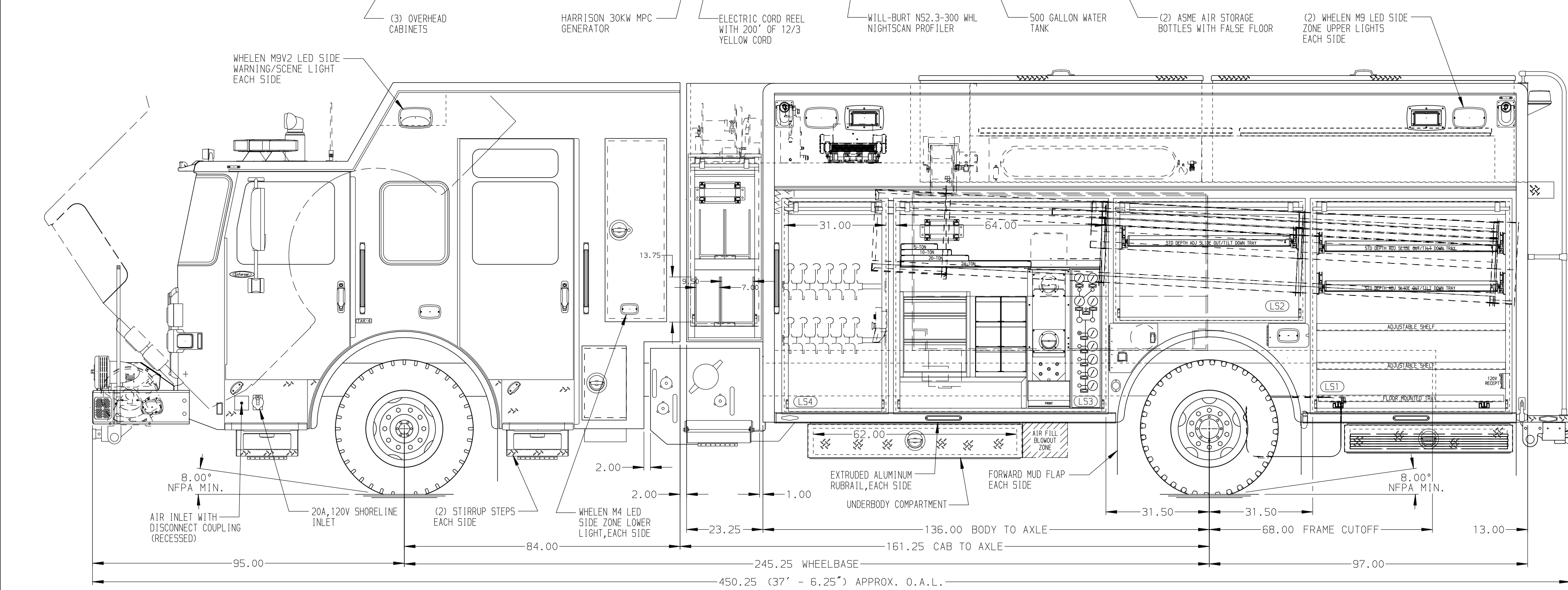


REAR COMPARTMENT CONTAINS THE FOLLOWING:

COMPARTMENT B1 CONTAINS:

- (1) HORIZONTAL FLOOR EXTENSION
- (1) RACK FOR THE FOLLOWING:
 - (1) 28" 2-SECTION LADDER
 - (1) 16" ROOF LADDER
- (1) FLOOR MOUNTED TRAY
- (2) STORAGE TROUGHS FOR TRENCH PANELS
- (1) STORAGE TROUGH AS LARGE AS POSSIBLE
- (1) RACK FOR 10 STORAGE TROUGHS
- (1) 90"DP FLOOR MTD SLIDEMASTER TRAY WITH TOOLBOARD
- (1) VERTICAL COMPARTMENT DIVIDER

HOSEBED CAPACITIES
(A) 500' OF 4.00" D.J. POLY HOSE



LEFT SIDE COMPARTMENTS CONTAIN THE FOLLOWING:

COMPARTMENT L51 CONTAINS:

- (2) STD DEPTH ADJ SHELVES
- (2) STD DEPTH ADJ SLIDE OUT/TILT TRAYS
- (1) FLOOR MOUNTED TRAY
- (1) 15/20A, 120V DUPLEX RECEPTACLE

COMPARTMENT L52 CONTAINS:

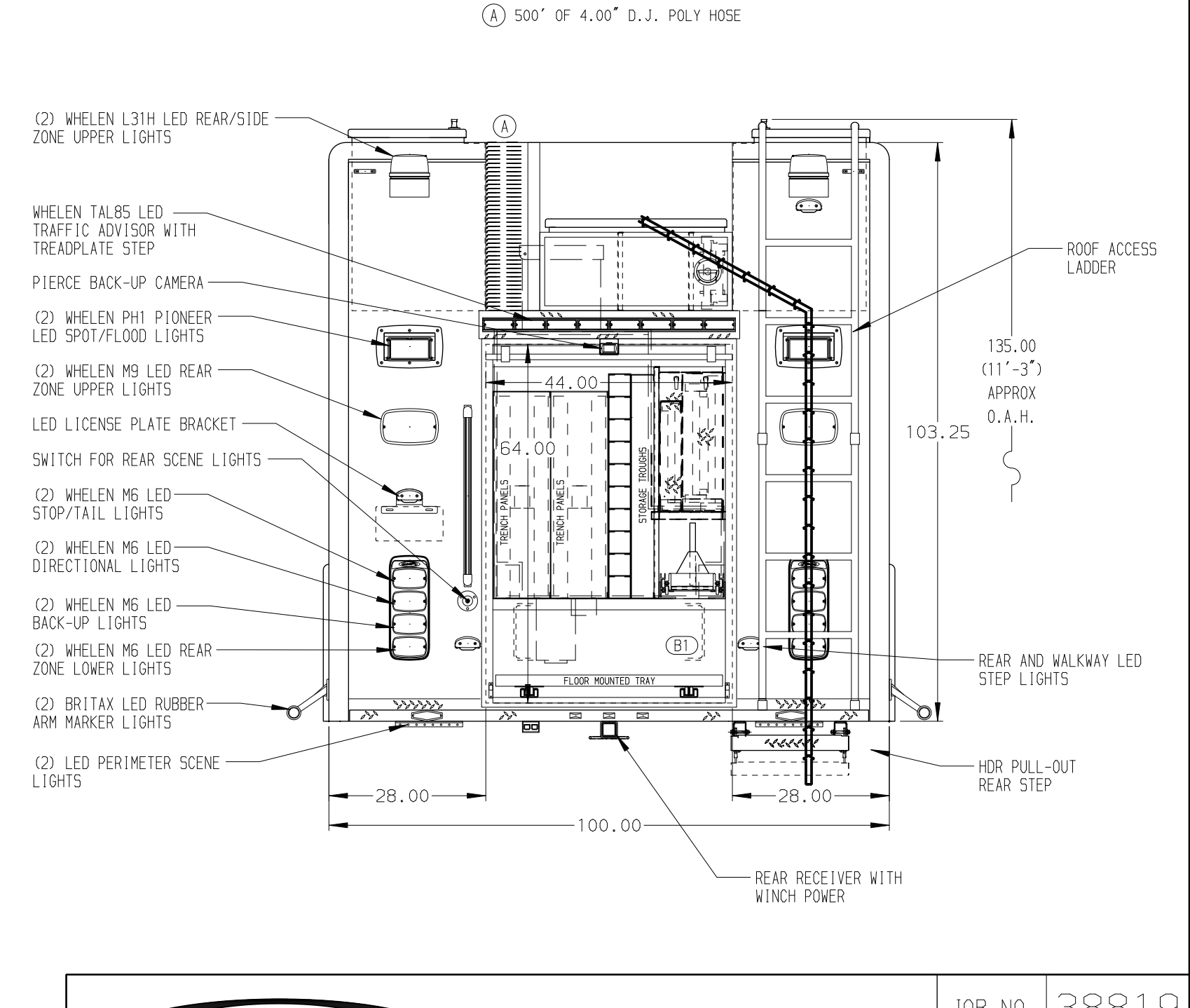
- (1) STD DEPTH ADJ SLIDE OUT/TILT TRAY
- PAC TRAC ON RIGHT & LEFT WALLS OF COMPARTMENT

COMPARTMENT L53 CONTAINS:

- (1) SPECIAL FLOOR EXTENSION
- (1) RACK FOR 4 AIR BAGS
- (1) RACK FOR 6 SCBA BOTTLES
- (1) STD DEPTH ADJ SHELF WITHOUT FRONT LIP
- (1) C-TECH 3-DRAWER CABINET
- (1) CASCADE SYSTEM CONTROL PANEL
- (1) "SPACE SAVER" 2-BOTTLE FILL ENCLOSURE
- (1) HIGH PRESSURE AIR REEL WITH 200' OF HOSE

COMPARTMENT L54 CONTAINS:

- (1) ANDOR LIFT-UP LAP DOORS
- (1) LIGHT TOWER CONTROLS



NOTE

DIMENSIONS SHOWN ARE APPROXIMATE AND ARE SUBJECT TO MINOR DEVIATIONS AS MAY OCCUR OR BE NECESSARY IN CONSTRUCTION. MINOR DETAILS NOT SHOWN.

- NOTE:**
- PIERCE 1500 GPM SINGLE STAGE PUC PUMP
 - POLISHED S/S SCUFFPLATES ON CAB AND CREW CAB DOOR JAMBS
 - FLOOR IN CAB AND CREW CAB TO BE PADDED RUBBER
 - 15/20A, 120V RECEPTACLE IN EACH FORWARD FACING EMS CABINET
 - BATTERY CHARGE INDICATOR LOCATED ON DRIVER'S SEAT RISER
 - S/S GUARDS ON ALL BODY ROLL-UP DOORS
 - ANDOR LED STRIP LIGHTS IN ALL BODY AND HATCH COMPARTMENTS

SIDE ROLL AND FRONTAL IMPACT PROTECTION

CLEAR DOOR WIDTH KEY

ANDOR ROLL UP DOORS:	-2 1/4"	03MAY24	DHE	AZU	CHASSIS DATA
CORTITE ROLL UP DOORS:	-2 1/2"	23APR24	SHD	AZU	MAKE
PIERCE DOUBLE LIP DOORS:	-4 1/4"	19FEB24	DHE	AZU	PIERCE
PIERCE LIFT-UP LAP DOORS:	-1 1/2"	16FEB24	DHE	AZU	MODEL
(EX: 60" F-F - 2 1/4" = 57 3/4" CLEAR)		29NOV23	DHE	AZU	REV
(F-F) = FRAME TO FRAME					DATE
					BY
					CH
					EN8424

		JOB NO.	38819
		SCALE	DATE
TITLE	HEAVY DUTY RESCUE WALKIN	DRAWN BY	DHE
FOR	LINCOLNSHIRE-RIVERWOOD F.P.D.	CHECKED BY	AZU
DWG NO.	BID #1028	SHEET SIZE	SHEET NO.
	RUDNICKI, DAN		1 OF 1