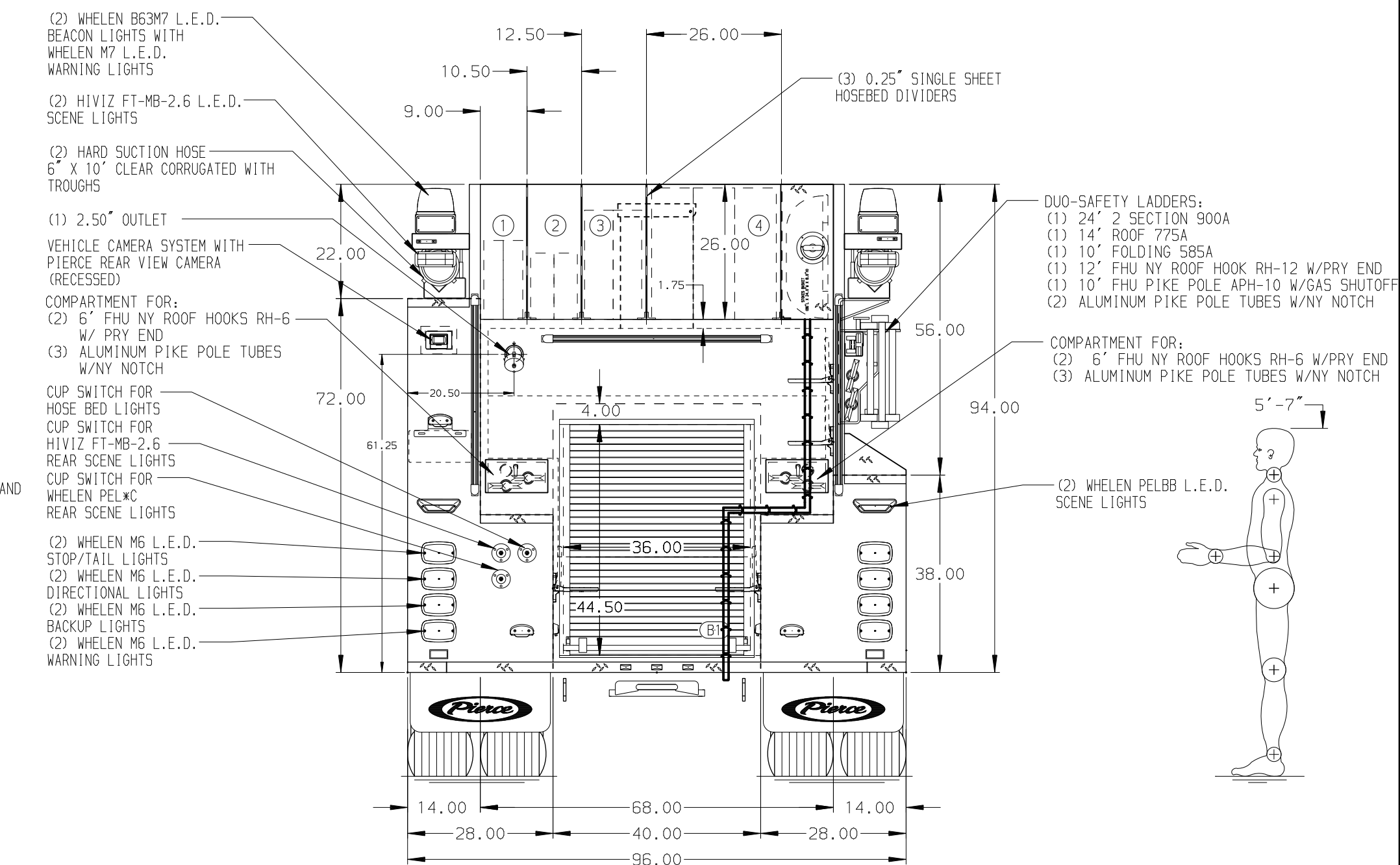
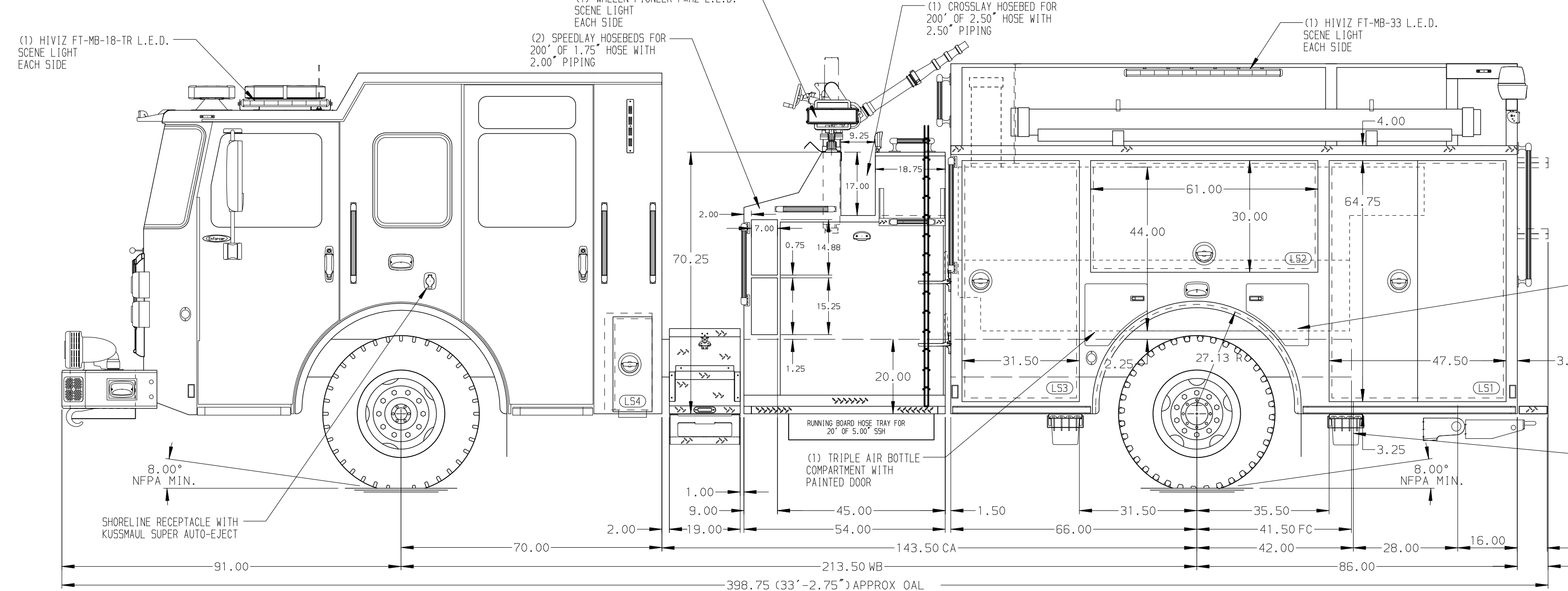


- HOSEBED CAPACITIES
- ① - 400' OF 2.00\"/>
 - ② - 300' OF 2.50\"/>
 - ③ - 500' OF 3.00\"/>
 - ④ - 950' OF 5.00\"/>



ALUMINUM BODY

MAXIMUM O.A.L. 400.00"

SIDE ROLL PROTECTION

NOTE
DIMENSIONS SHOWN ARE APPROXIMATE AND ARE SUBJECT TO MINOR DEVIATIONS AS MAY OCCUR OR BE NECESSARY IN CONSTRUCTION. MINOR DETAILS NOT SHOWN.

1. ONSPOT AUTOMATIC TIRE CHAINS TO BE PROVIDED AT REAR
2. AIR INLET WITH DISCONNECT COUPLING LOCATED IN DRIVER'S SIDE STEPWELL
3. AIR OUTLET WITH SHUT OFF VALVE LOCATED AT DRIVER'S SIDE PUMP PANEL
4. KUSSMAIL AIR COMPRESSOR LOCATED BEHIND DRIVER'S SEAT
5. BATTERY CHARGER LOCATED BEHIND DRIVER SEAT
6. BATTERY CHARGER INDICATOR LOCATED ON DRIVER'S SEAT RISE
7. LITTLE GIANT LADDER VELOCITY MODEL: 13 LOCATED IN RS1 PER ORDER
8. MIC & SPEAKER COMPARTMENT LOCATED BY OPERATOR'S PANEL

REV	DATE	BY	CH	ENFORCER	MODEL	MAKE	CHASSIS DATA	TITLE
010CT24		SAM	PHA					2000GPM, 1000G TANK, 1000G WATER 152" PUMPER, HARDWIRED
14JUN24		SAM	COS					
24MAY24		SAM	COS		PIERCE			SPARTA TOWNSHIP FIRE DEPARTMENT SPARTA, NEW JERSEY
22MAR24		SAM	PHA					

		JOB NO.	38768
		SCALE	DATE
		DRAWN BY	15MAR24
		CHECKED BY	15MAR24
		SHEET SIZE	SHEET NO.
		DWG NO.	1 OF 1

38768AD