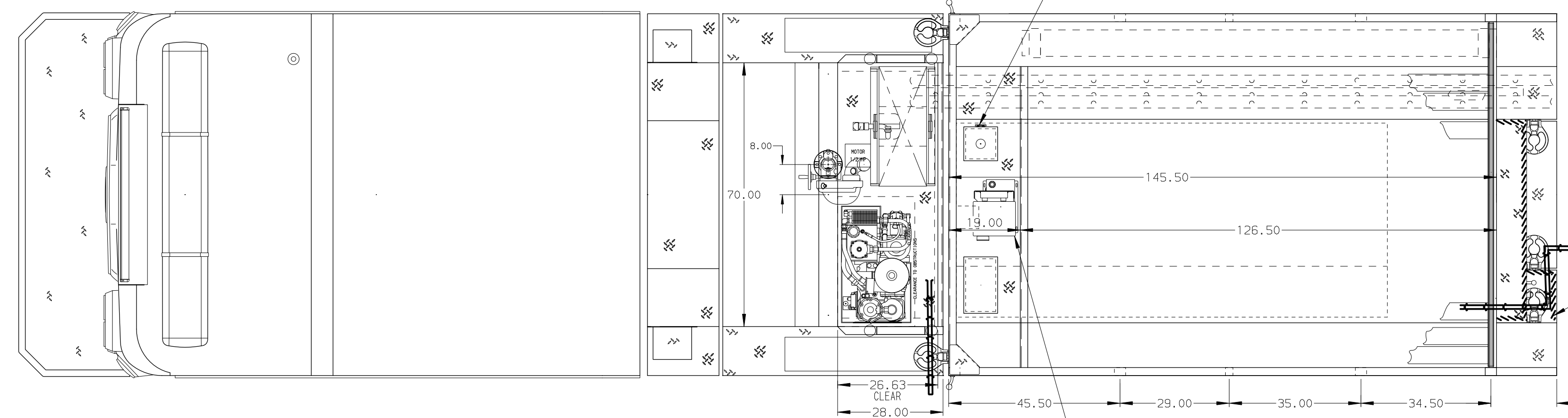


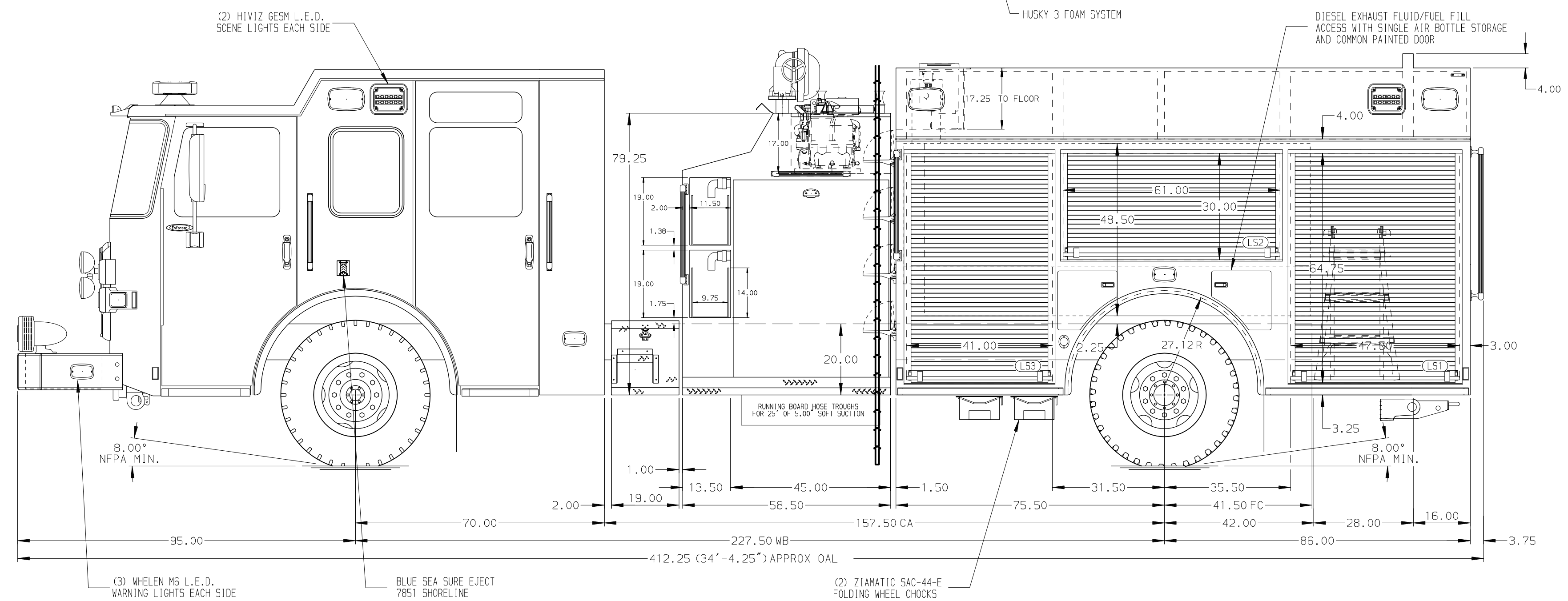
(1) TRIPLE AIR BOTTLE COMPARTMENT WITH PAINTED DOOR  
 (1) AIR PACK COMPARTMENT WITH PAINTED DOOR EACH SIDE

(2) SPEEDLAY HOSEBEDS WITH TRAYS FOR 200' OF 1.75\"/>

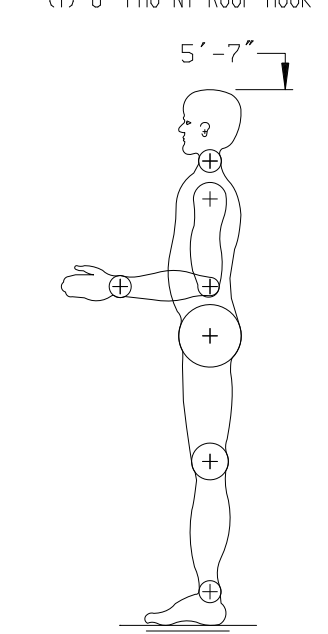
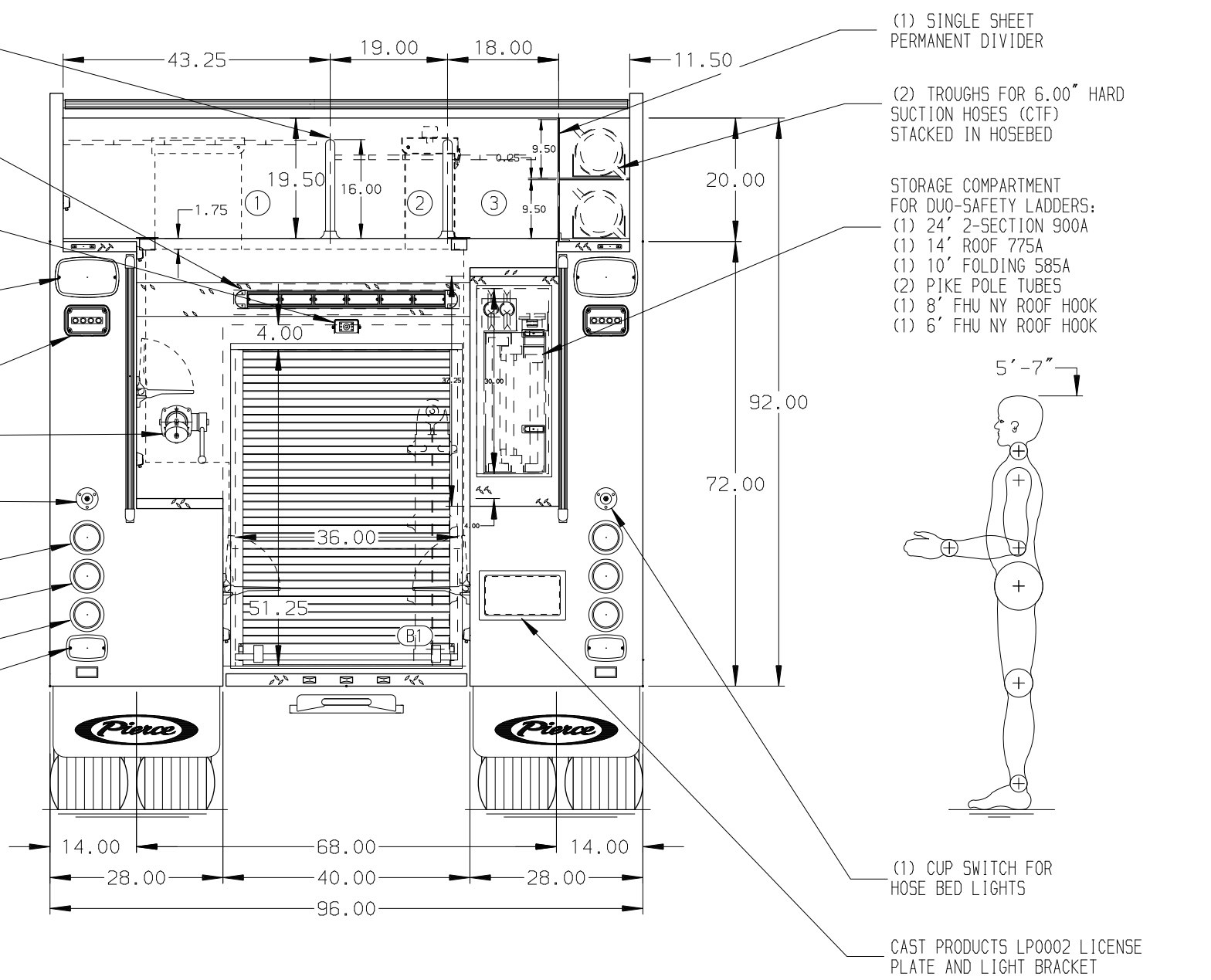


SURFACE DESIGNATION AND PATHWAY MARKINGS

HOSEBED CAPACITIES  
 ① - 1000' OF 5.00\"/>



(2) HOSEBED DIVIDERS  
 WHELEN TALS L.E.D. TRAFFIC DIRECTING LIGHT RECESSED IN TREADPLATE STEP  
 VEHICLE CAMERA SYSTEM PIERCE REAR VIEW CAMERA  
 (2) WHELEN M9 L.E.D. WARNING LIGHTS  
 (2) H1VIZ 65MJR L.E.D. SCENE LIGHTS  
 (1) 2.50\"/>



ALUMINUM BODY

SIDE ROLL AND FRONTAL IMPACT PROTECTION

NOTE  
 DIMENSIONS SHOWN ARE APPROXIMATE AND ARE SUBJECT TO MINOR DEVIATIONS AS MAY OCCUR OR BE NECESSARY IN CONSTRUCTION. MINOR DETAILS NOT SHOWN.

- AIR INLET WITH DISCONNECT COUPLINGS UNDER DS OF BUMPER EXTENSION
- BATTERY CHARGER LOCATED PER SHOP ORDER
- SIX FULL WIDTH/DEPTH ADJUSTABLE SHELVES PER SHOP ORDER
- FOUR FLOOR MOUNTED SLIDE-OUT TRAYS PER SHOP ORDER
- ONE SWING-OUT ALUMINUM TOOL BOARD PER SHOP ORDER
- 140 CFM COMPRESSED AIR FOAM SYSTEM
- HANNAY BOOSTER REEL (EP20-33-34) FOR CAPACITY OF 200' OF 1.00\"/>

- ONE SLIDE-OUT TRAY PER SHOP ORDER
- ZIAMATIC SAC-44-E FOLDING WHEEL CHOCKS

		JOB NO.	38767
		SCALE	DATE
<b>Pierce</b> MANUFACTURING INC.		TITLE	1750 GPM, 1000G TANK, 980G WATER, 20G FOAM 161\"/>
		FOR	HARLINGEN FIRE DEPARTMENT HARLINGEN, TEXAS
		DWG NO.	38767AD
		SHEET NO.	1 OF 1