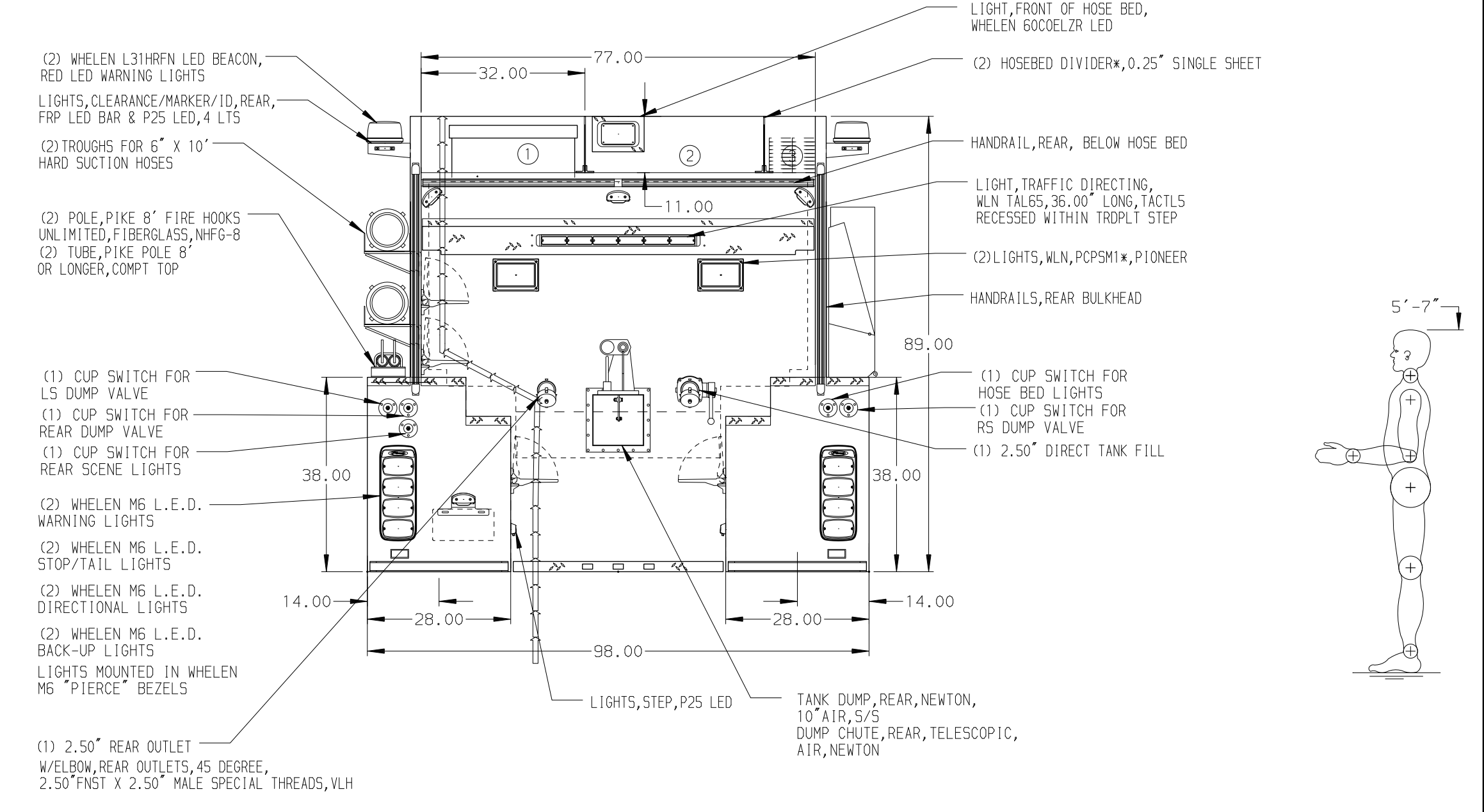
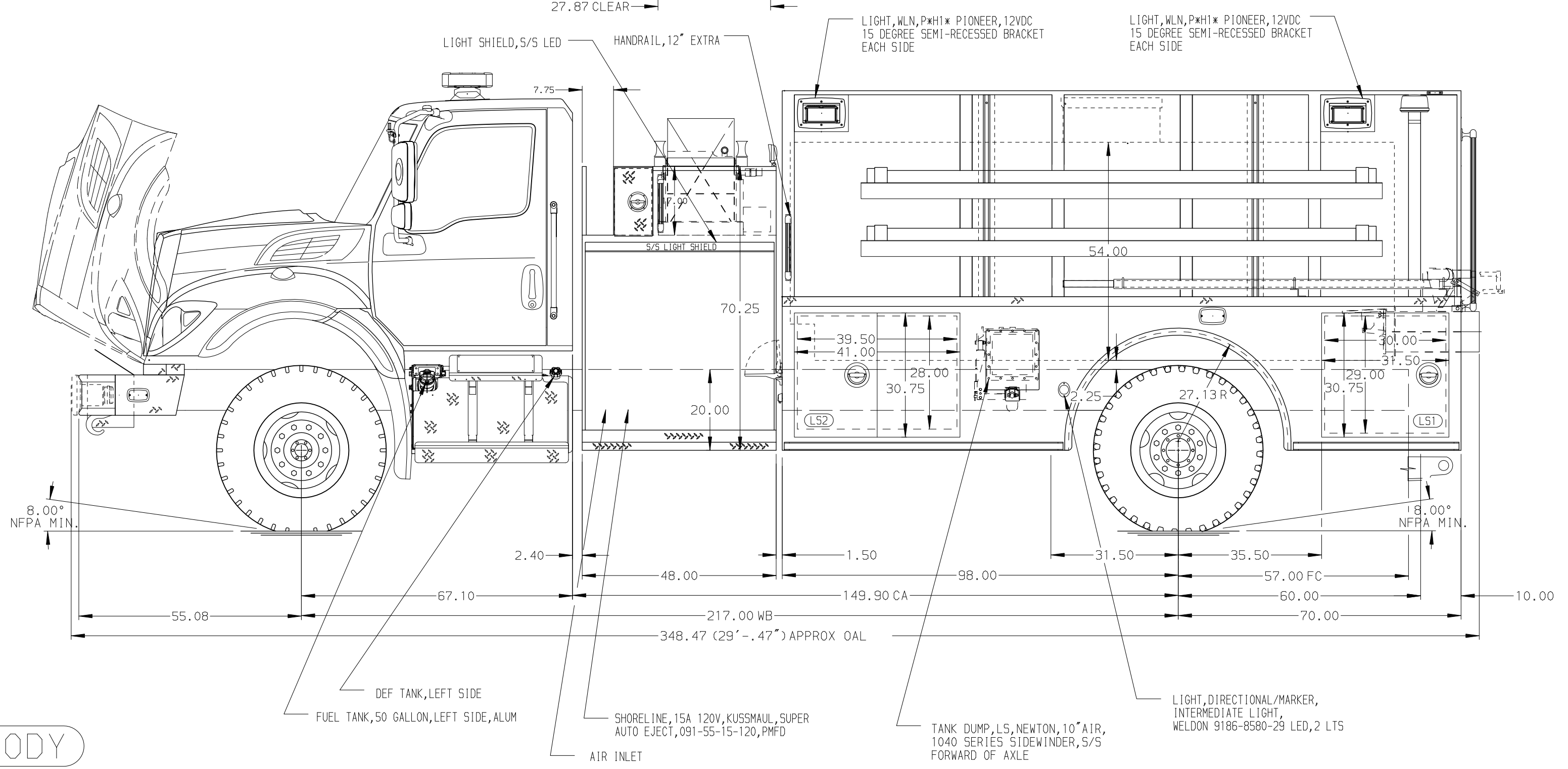


HOSEBED CAPACITY	
BED 1	OPEN - NO HOSE REQUIRED
BED 2	OPEN - NO HOSE REQUIRED
BED 3	200' OF 2.50" D.J. POLY HOSE



ALUMINUM BODY

NOTE  
DIMENSIONS SHOWN ARE APPROXIMATE AND ARE SUBJECT TO MINOR DEVIATIONS AS MAY OCCUR OR BE NECESSARY IN CONSTRUCTION. MINOR DETAILS NOT SHOWN.

REV	DATE	BY	CH	HV607
030C23	RWR	CCS	DATA	
21JUL23	RHU	CCS	MAKE	
20JUL23	RHU	CCS	IHC	
31MAY23	RHU	AJA	MODEL	

		JOB NO.	38761
		SCALE	DATE
TITLE	1000-D-2000 POLY 168" LAP, LOW, 2G, DRYSIDE BODY	DRAWN BY	17MAY23
FOR	48" SIDE CONTROL, (1) CROSSLAY MONTE VISTA FIRE PROTECTION DISTRICT	CHECKED BY	18MAY23
DWG NO.	38761AD	SHEET SIZE	SHEET NO.
		D	1 OF 1