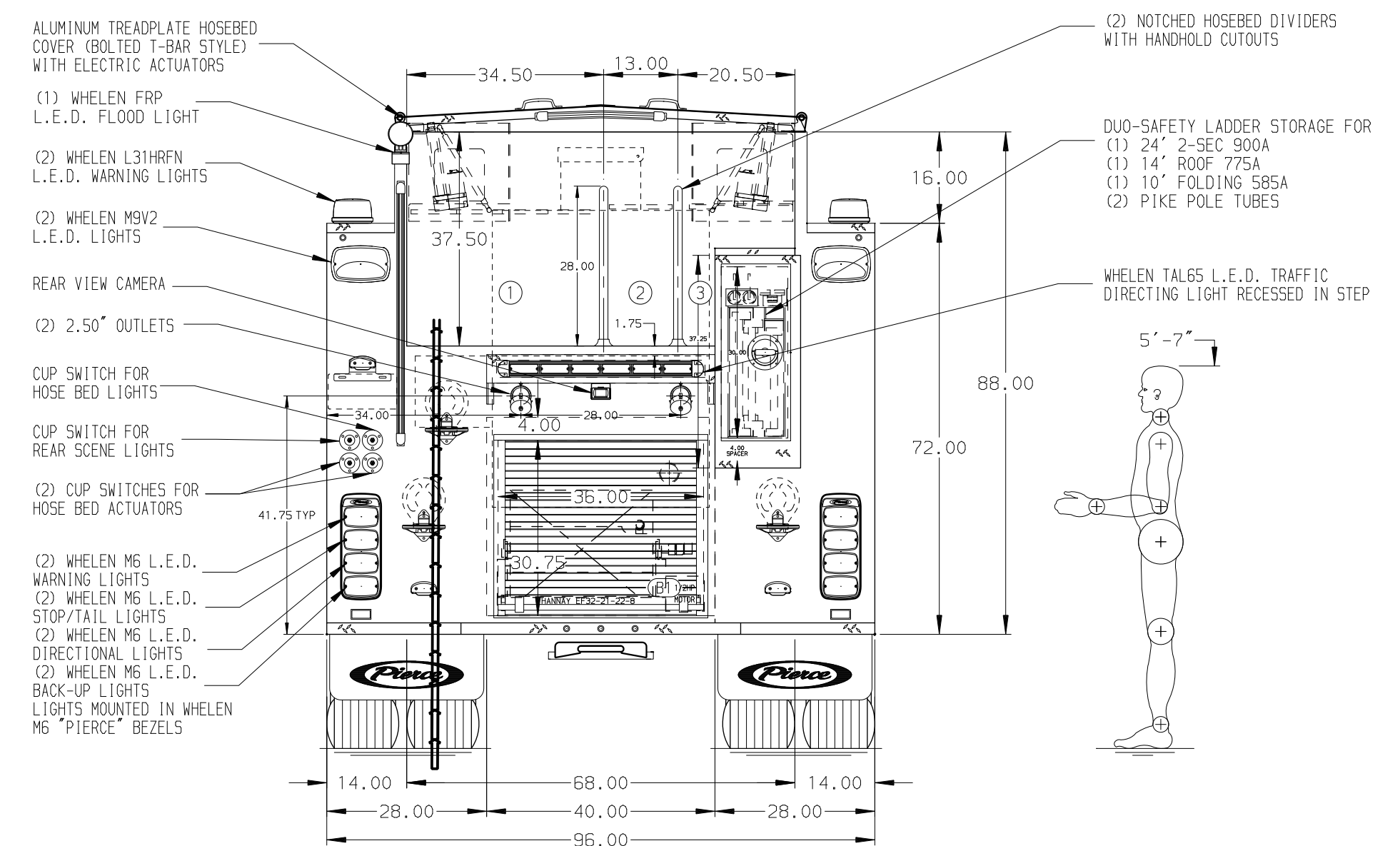
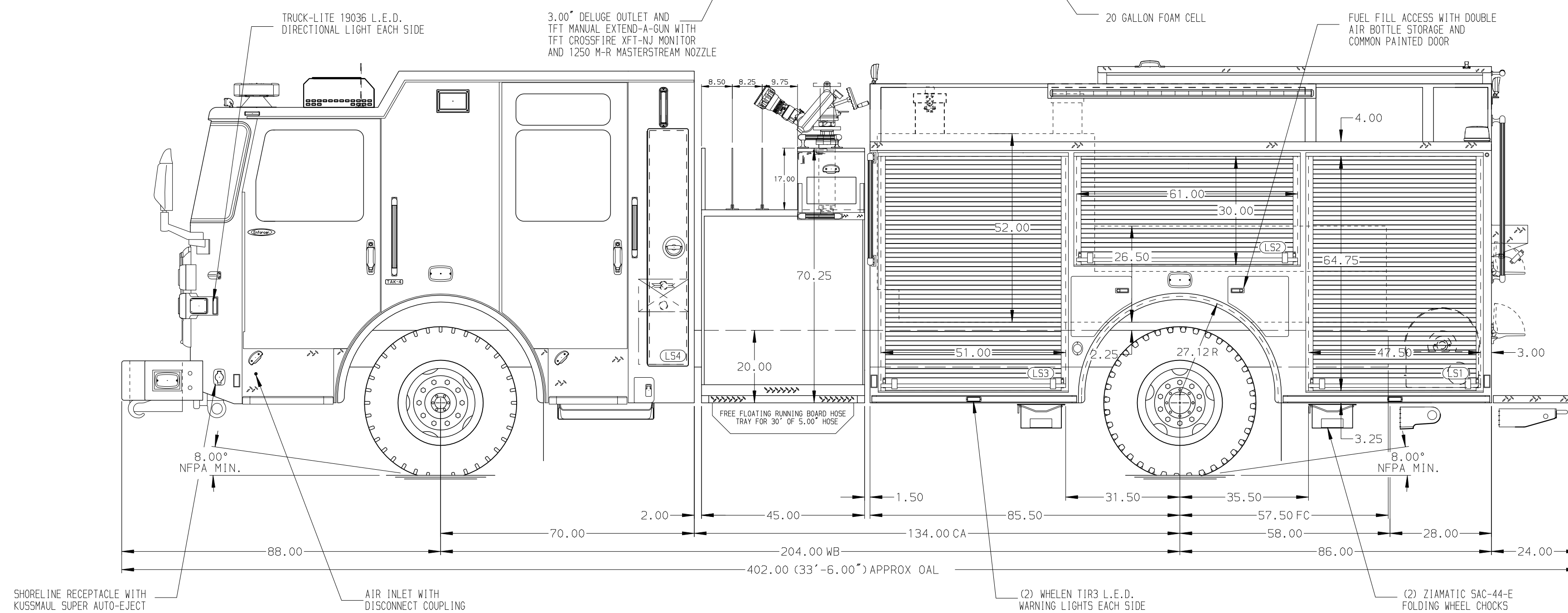


- HOSEBED CAPACITIES
- ① - 1000' OF 5.00" D.J. POLY HOSE
 - ② - 500' OF 3.00" D.J. POLY HOSE
 - ③ - 500' OF 2.50" D.J. POLY HOSE



ALUMINUM BODY

SIDE ROLL AND FRONTAL IMPACT PROTECTION

NOTE
DIMENSIONS SHOWN ARE APPROXIMATE AND ARE SUBJECT TO MINOR DEVIATIONS AS MAY OCCUR OR BE NECESSARY IN CONSTRUCTION. MINOR DETAILS NOT SHOWN.

- 1. FOAM PRO 2001 SYSTEM LOCATED PER SHOP ORDER
- 2. DUAL L.E.D. LIGHT STRIPS LOCATED IN HOSE BED
- 3. (2) PIKE POLE TUBES LOCATED IN CAB TRANSVERSE COMPARTMENT
- 4. BATTERY CHARGER LOCATED PER ORDER
- 5. HANNAY BOOSTER REEL (MODEL: EP32-21-22-B) FOR 200' OF 1.00" HOSE LOCATED IN THE B1 COMPARTMENT

REV	DATE	BY	CH	ENFORCER
01APR24	JJB	CHR		
15FEB24	JJB	CHR		
15DEC23	JJB	WKL		

		JOB NO.	38738
		SCALE	DATE
TITLE	2000-D-770P, 750G WATER W/ 20G FOAM, 171" FDLER BODY LADDERS BTWN TANK & SS, (3) CROSSLAYS, DELUGE		
FOR	HARRIS COUNTY ESD #17 - LITTLE YORK VFD HOUSTON, TEXAS		
DWG NO.	38738AD-SH1		
	DRAWN BY	JJB	11DEC23
	CHECKED BY	WKL	12DEC23
	SHEET SIZE	D	SHEET NO. 1 OF 2