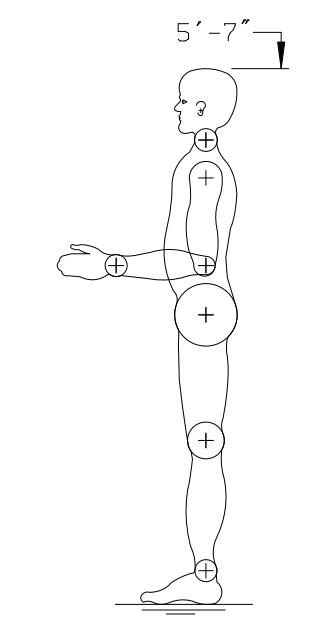
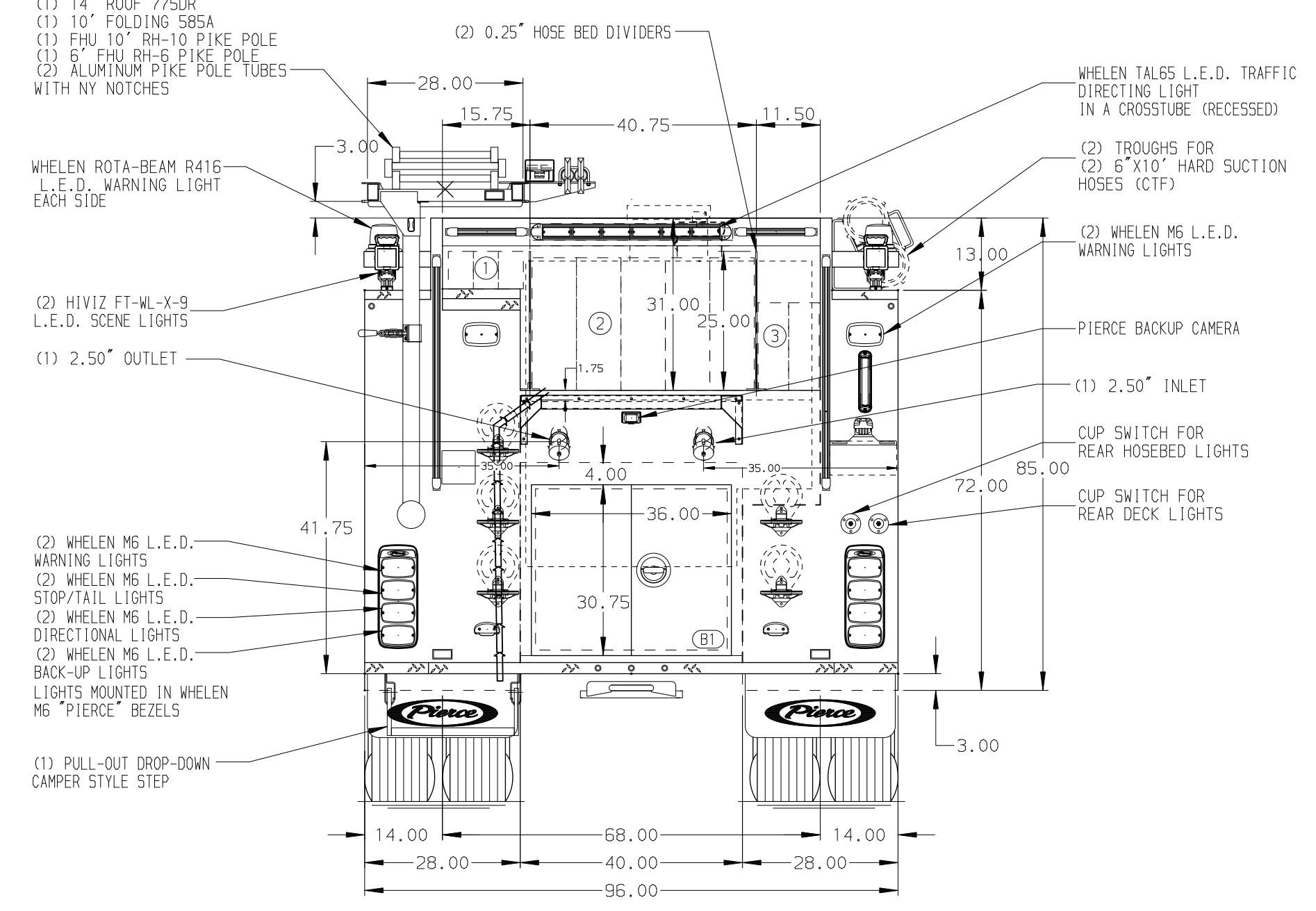
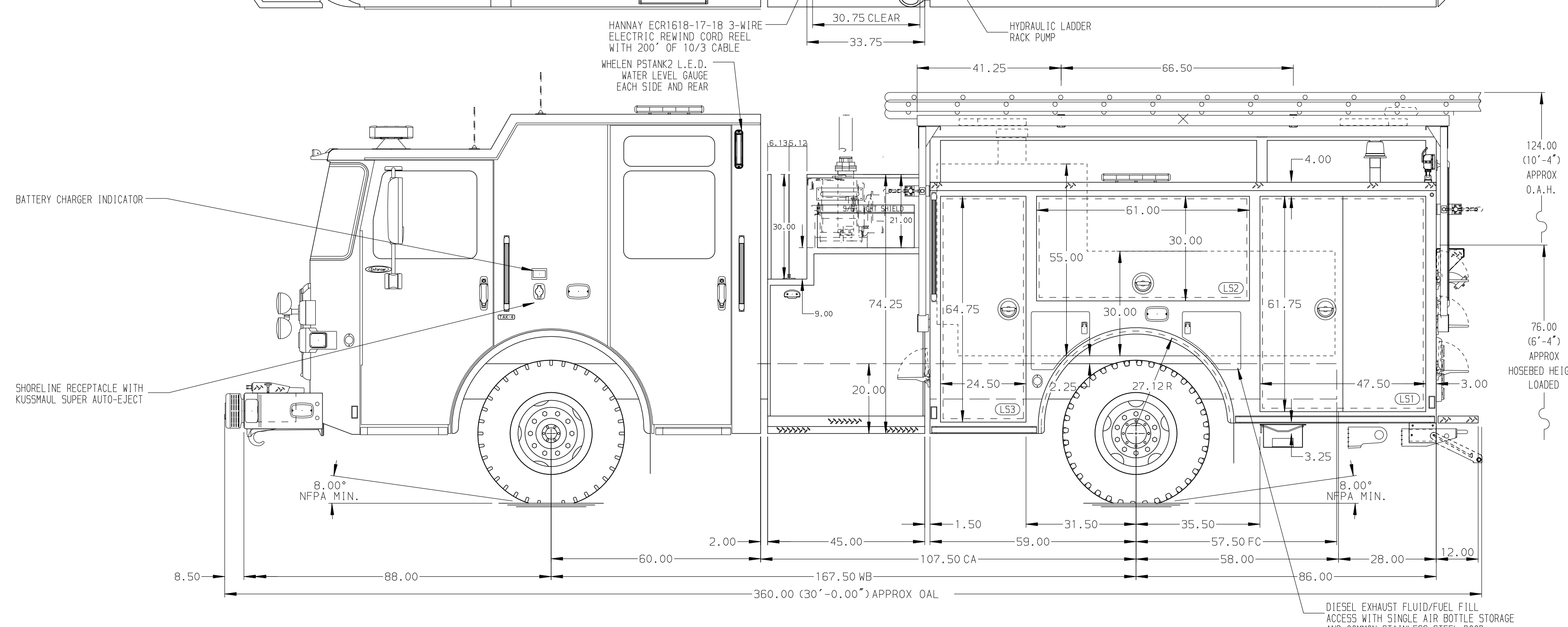


- HOSEBED CAPACITIES
- ① 200' OF 2.50" D.J. POLY HOSE
  - ② 1200' OF 5.00" D.J. POLY HOSE
  - ③ 300' OF 3.00" D.J. POLY HOSE

- DUO- SAFETY LADDERS
- (1) 24' 2-SECTION 900A
  - (1) 14' ROOF 775DR
  - (1) 10' FOLDING 585A
  - (1) FHU 10" RH-10 PIKE POLE
  - (1) 6' FHU RH-6 PIKE POLE
  - (2) ALUMINUM PIKE POLE TUBES WITH NY NOTCHES



ALUMINUM BODY

MAXIMUM O.A.H. 126.00"

SIDE ROLL AND FRONTAL IMPACT PROTECTION

NOTE  
DIMENSIONS SHOWN ARE APPROXIMATE AND ARE SUBJECT TO MINOR DEVIATIONS AS MAY OCCUR OR BE NECESSARY IN CONSTRUCTION. MINOR DETAILS NOT SHOWN.

- 1. BATTERY CHARGER LOCATED BEHIND DRIVER'S SEAT
- 2. DUAL L.E.D. LIGHT STRIPS LOCATED IN HOSE BED

REV	DATE	BY	CH	ENFORCER
29APR24	JAM	GKH		
15MAR24	KLE	GKH		
25JAN24	CDU	CDU		

		JOB NO.	38471
		SCALE	DATE
CHASSIS DATA TITLE MAKE MODEL FOR	1500-D-750P, 750G W OG F, 145" LAP FH&FD LS, FDLER RS (2) X-LAYS, DELUGE, GENERATOR, CABLE REEL, HLR CHEROKEE FIRE RESCUE CHEROKEE, NORTH CAROLINA	DRAWN BY	01DEC23
		CHECKED BY	05JAN24
DWG NO.	38471AD	SHEET SIZE	SHEET NO.
		D	1 OF 1