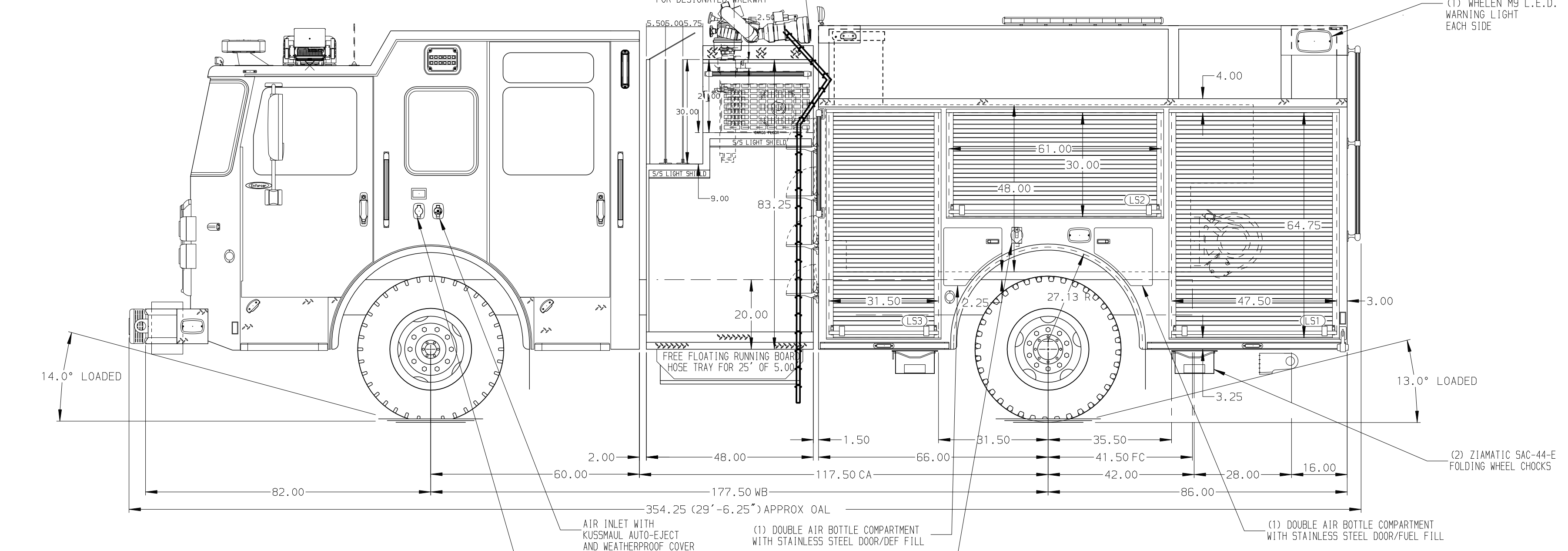
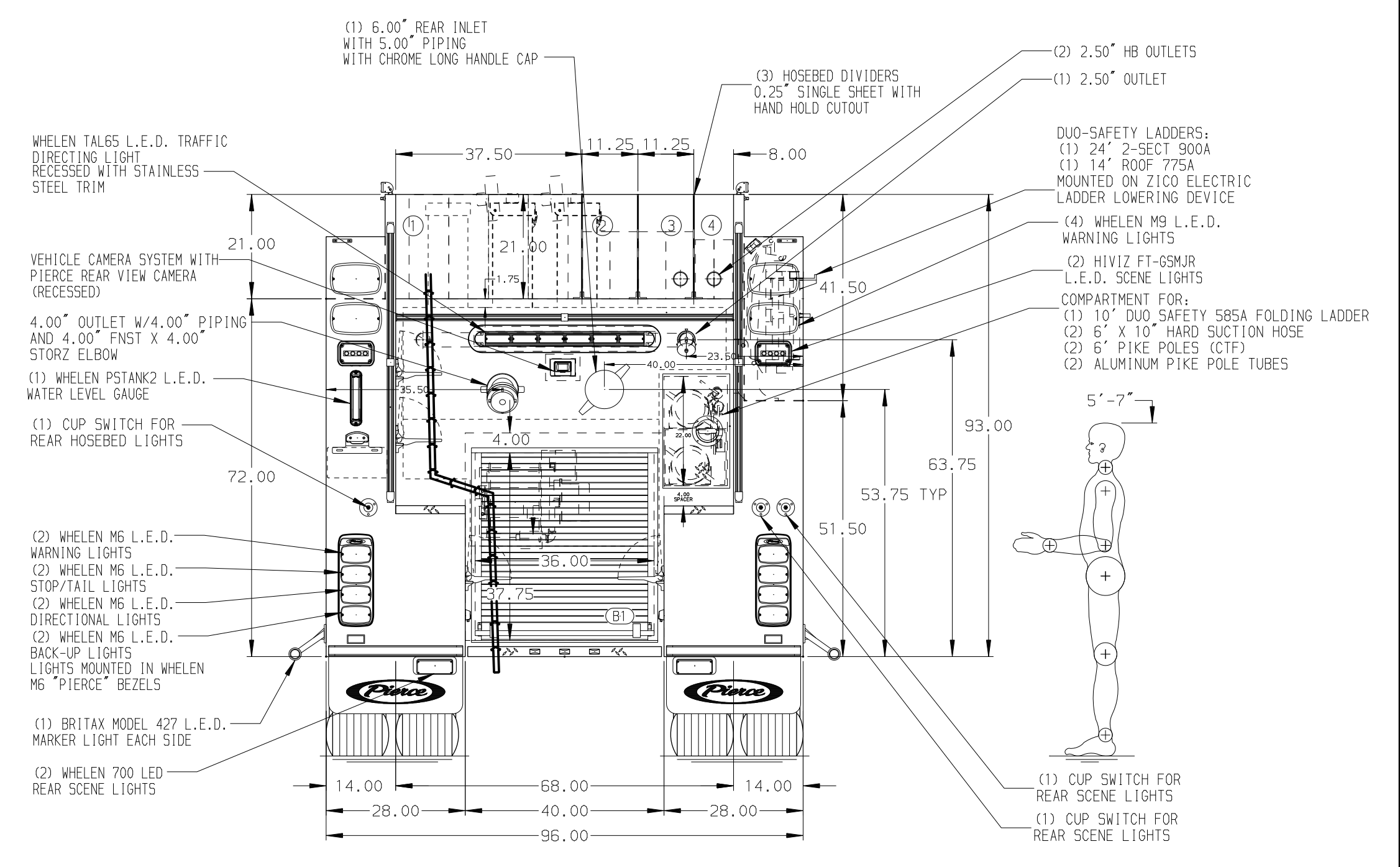
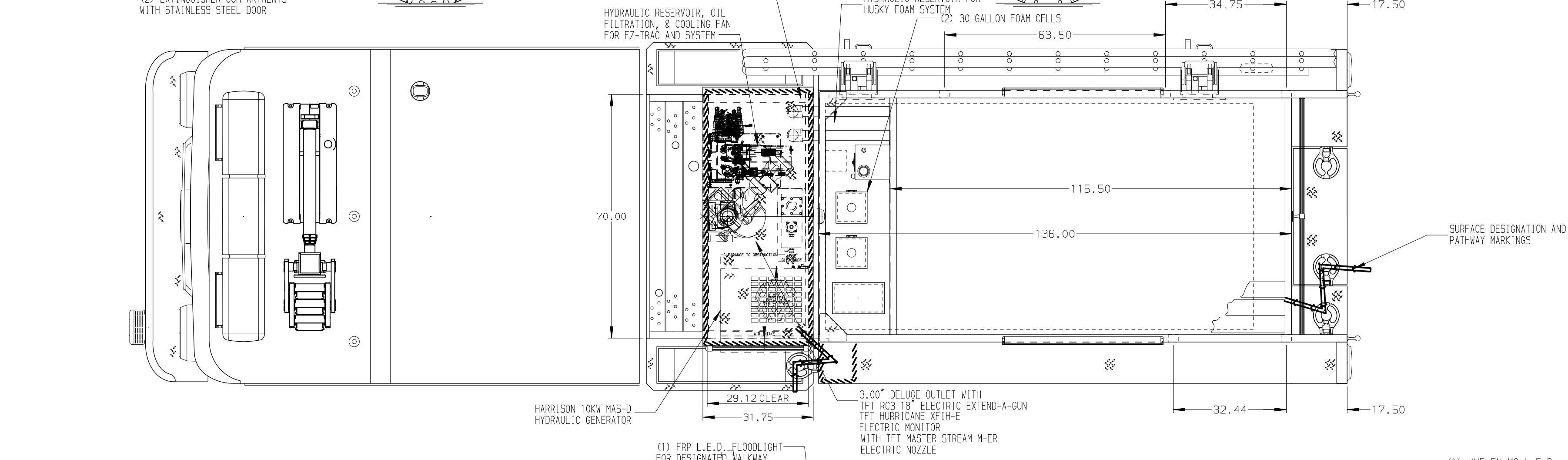


- HOSEBED CAPACITIES**
- ① 1200' OF 5.00\"/>



ALUMINUM BODY

FRONTAL IMPACT PROTECTION

		JOB NO.	38424
		SCALE	DATE
TITLE 1500-D-1030P, 970G WATER (2) 30G FOAM, 152\"/>		DRAWN BY	JAM
		CHECKED BY	PHA
FOR NORTH QUEENSBURY FIRE CO. INC. CLEVELDALE, NEW YORK		SHEET SIZE	SHEET NO.
		DWG NO.	38424AD

**NOTE**  
 DIMENSIONS SHOWN ARE APPROXIMATE AND ARE SUBJECT TO MINOR DEVIATIONS AS MAY OCCUR OR BE NECESSARY IN CONSTRUCTION. MINOR DETAILS NOT SHOWN.

1. BATTERY CHARGER LOCATED BEHIND DRIVER SEAT
2. CIRCUIT BREAKER PANEL IN COMPARTMENT L53
3. ONE HANNAY ELECTRIC REWIND CORD REEL MODEL 1618-17-18 LOCATED IN B1
4. LIGHT TOWER CONTROLLER LOCATED IN COMPARTMENT L53

REV	DATE	BY	CH	ENFORCER
1	11DEC24	JAM	CSH	CHASSIS DATA
2	10DEC24	JAM	CSH	CHASSIS DATA
3	04DEC24	JAM	CSH	MAKE
4	04NOV24	JAM	CSH	PIERCE
5	09OCT24	JAM	CSH	MODEL