

CARE™

Carcinogen Awareness & Reduction to Exposure





Carcinogen Awareness
and Reduction to Exposure

Protection is an action that goes beyond the fire and the truck.

Pierce partnered with the Firefighter Cancer Support Network and developed the CARE™ initiative. The program is designed to raise awareness about how damaging carcinogens are to firefighters. Taking precautions can lessen their chances of being diagnosed with cancer in the future.

What is a clean cab?

A clean cab contains options that reduce firefighters' exposure to carcinogens. Not only does it apply to the cab interior, but also to other options on the exterior. There are numerous options to consider when designing an apparatus.

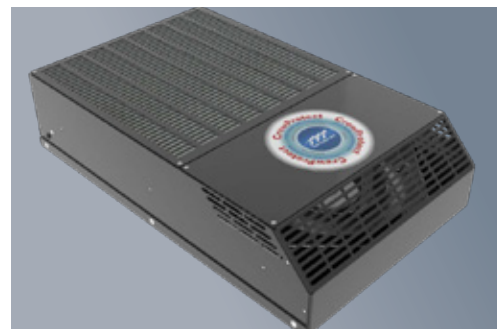
What Pierce is doing:

- Sustaining the partnership with the Fire Cancer Support Network
- Decontamination buckets provided on 1,500 apparatus
- 250+ sales reps nationwide trained by members of the Florida Firefighter Safety & Health Collaborative on "Clean Cab Initiatives"
- Continually adding apparatus options to keep firefighters safe



What the Firefighter Cancer Support Network is doing:

- Providing assistance to firefighters who have been diagnosed with cancer
- Offering mentoring support by cancer survivors in the fire industry
- Providing occupational cancer awareness and prevention training to thousands of firefighters across the nation
- Connecting to local resources



Stay clean and safe.

Keeping contaminants out of the cab creates a safer environment for firefighters. There are a variety of options that make it easier to disinfect the cab. Air filtration systems are also available to lessen the harmful chemicals in the air. The list of options is evolving as the industry continues to learn what can be done to keep firefighters safe.

There are two main objectives that departments look to obtain with their clean cab environment:

- Choosing surfaces that are easy to clean
- Keeping the air clean



HVAC filtration.

The heating, ventilation, and air conditioning (HVAC) system can be modified to filter carcinogens from the cab.

HEPA filters are standard on the Enforcer™, Impel®, Saber® and Velocity® cabs.



Cabinet vents & fans.

Cabinet seals keep contaminated air from entering the cab.

In addition, fans (pictured here) can be added in EMS cabinets to create a pressure vacuum that vents outside the cab, keeping contaminated air away from the cab occupants.

Cab air filtration with CrewProtect.

The CrewProtect system filters the air in the cab every 3.5 minutes, which exceeds the air exchange rate of operating rooms in hospitals.

It purifies the air by removing particulates and VOCs - the two greatest contributors to firefighter cancer. It also removes aerosols that carry viruses and bacteria.

It is available on all Pierce custom chassis.



Vinyl interior.

Smooth vinyl surfaces trap less dirt and contaminants and are easier to clean than cloth.

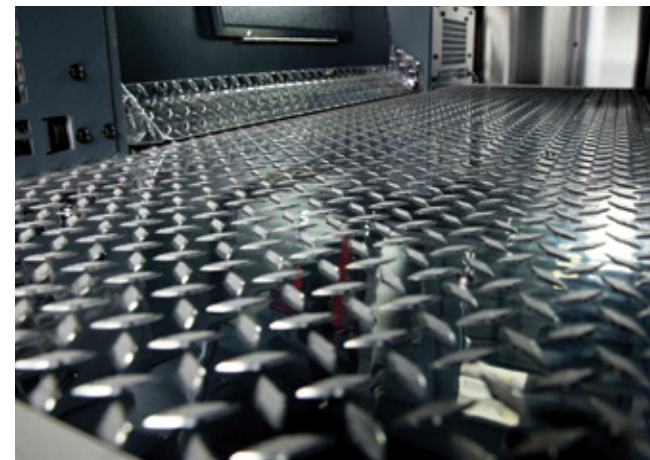
The seats, headliner, walls, engine tunnel cover, and HVAC drain tubs can be covered in vinyl.



Painted surfaces.

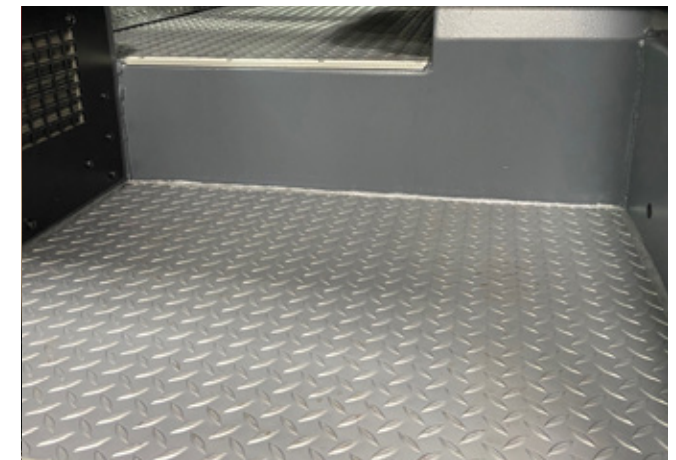
Cab interior surfaces can be painted, making them easier to clean.

The headliner, walls, engine tunnel cover, and HVAC drain tubs can be painted.



Aluminum treadplate floor.

Treadplate flooring does not absorb carcinogens or dirt and is easy to clean.



LonSeal flooring.

LonSeal flooring is a durable, vinyl material that is easy to clean. It comes in a variety of patterns and colors.



Consider moving SCBAs out of the cab.

A fundamental element of the CARE™ initiative is reducing carcinogen exposure. Removing SCBA brackets from the cab decreases the amount of carcinogens in the cab, and there are numerous alternate storage options to consider.



Fender compartment.

SCBA tanks can be stored in fender compartments.



Tilt-out tray.

Trays can be specifically designed to house SCBA tanks. The tilt-out option makes them easier to access.



Cab extension.

Compartments can be designed behind the cab to save room in the body and can store an SCBA bottle and other miscellaneous gear on both sides.



EMS cabinet.

SCBA tanks can be stored in EMS compartments, which can be designed to be accessed from the exterior only.



Pull-out tool board.

A pull-out tool board can be specifically designed to house SCBAs or turnout gear. Firefighters can put the SCBA on directly from the tool board.



Body compartment.

SCBAs can be stored on brackets mounted in body compartments. The brackets can be moved side to side, based on storage needs.



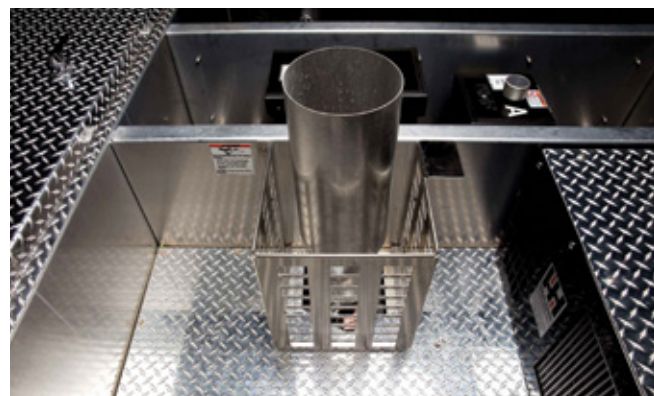
It all starts at the scene.

At fire scenes, firefighters are exposed to harmful chemicals, ranging from vehicle exhaust to carcinogens from the fire.

Vertical exhaust.

Traditional exhaust systems are routed to the underside of the truck, which results in pump operators breathing in harmful fumes. Changing to vertical exhaust moves the exhaust farther away from the firefighter.

Each vertical exhaust system is engineered based on the truck specifications. Apparatus with PUC™ pumps are routed through the top of the truck while traditional configurations are routed up the side of the pump house.



Shown on a PUC™ configuration.



Shown with a traditional pump house configuration.

Keep the cab carcinogen-free.

Keeping dirty gear out of the cab greatly reduces carcinogen exposure. Departments have the option to store their gear somewhere other than the cab after working a fire scene. Storage options continue to evolve as departments get creative with apparatus compartmentation, which range from hatch to transverse compartments and pullout trays.



Hatch compartment.

Departments can allocate space in hatch compartments for dirty gear. Gear can be stored in various compartments on the apparatus.



Quickly clean your gear.

Keeping dirty gear out of the cab is not the only way firefighters can combat carcinogen exposure. Departments can choose apparatus options that allow them to clean their gear and themselves at the scene. There are a variety of options that are currently available at Pierce.

Use the Command Zone™ System to maintain your vehicle.

The Command Zone Advanced Electronics System can be programmed for filter changes and cleaning cab/compartment reminders. This adds another layer of protection that allows for ease of maintenance and piece of mind that the vehicle will continue to run at an optimal level.



Water rinse outlet.

This outlet provides low pressure water on scene to rinse off after the call. The system has its own water tank with a low level sensor so the pump does not burn out.

Tank heaters are available to provide warm water on scene.



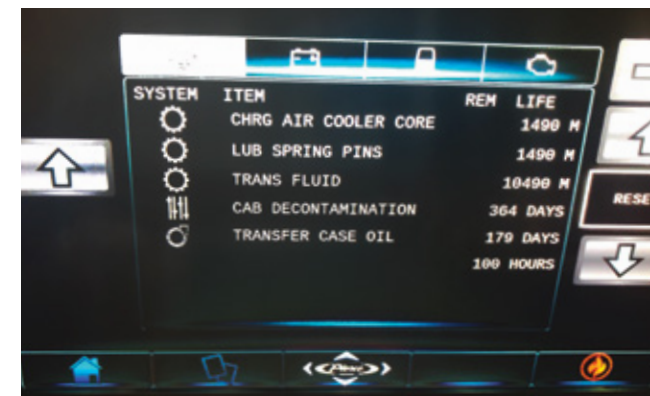
Shower head outlet.

The shower head outlet is fed from the water pump and provides a pressure protection valve to keep the pressure low.



Garden hose outlet.

The garden hose outlet is gravity fed from the water tank or water pump to rinse off on scene.



www.piercemfg.com



PERFORM. LIKE NO OTHER.™

Pierce Manufacturing Inc., An Oshkosh Corporation Company
P.O. Box 2017, Appleton WI 54912-2017 USA

Specifications, descriptions, and illustrative material in this literature are as accurate as known at the time of publication, but are subject to change without notice. Illustrations may include optional equipment and accessories and may not include all standard equipment. All measurements are nominal values.
© Pierce Manufacturing Inc., Pierce, the Pierce logo, Impel, Saber, and Velocity are registered trademarks, CARE, Command Zone, and Enforcer are trademarks; and Perform. Like No Other. is a service mark of Pierce Manufacturing Inc., Appleton, WI. Printed in U.S.A.

All other trademarks are the property of their respective owners.

P-0148-CAREBR 7/21