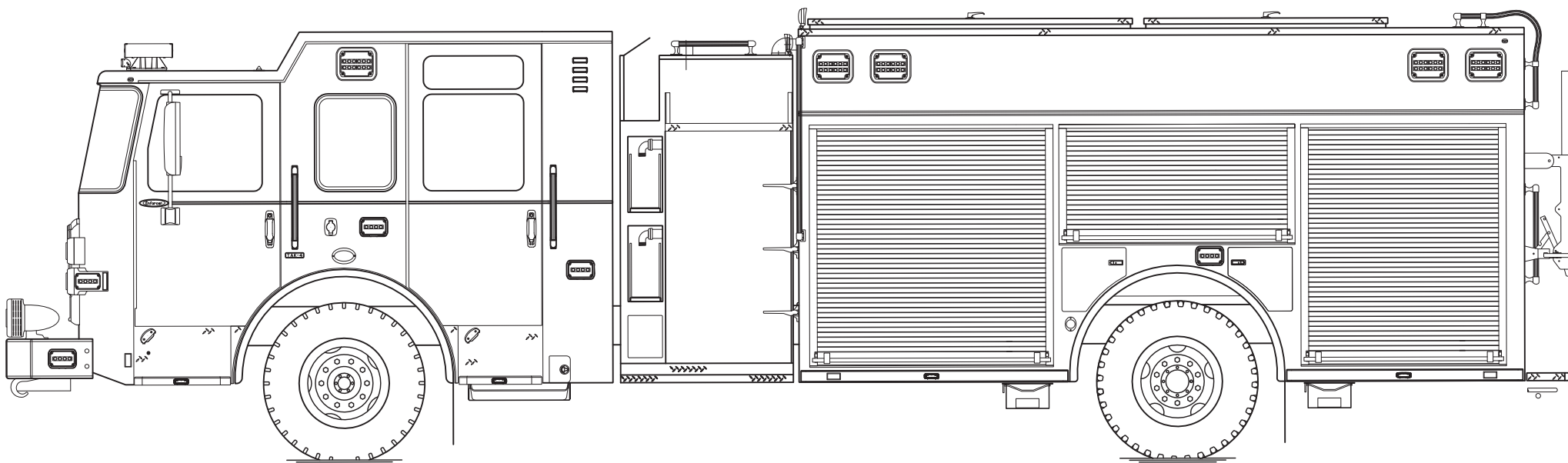




PERFORM. LIKE NO OTHER.™

# Enforcer™ Heavy-Duty Rescue Pumper

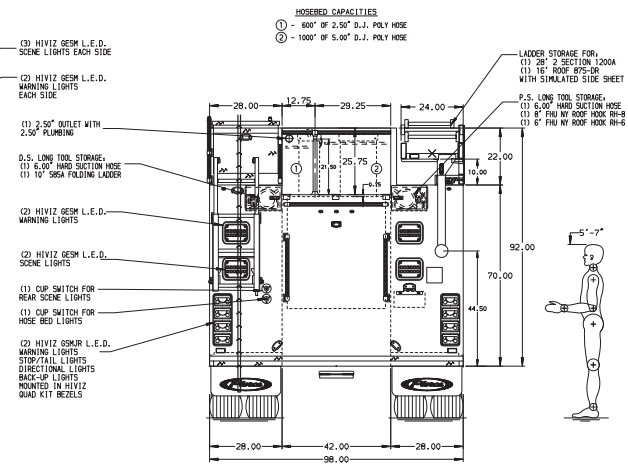
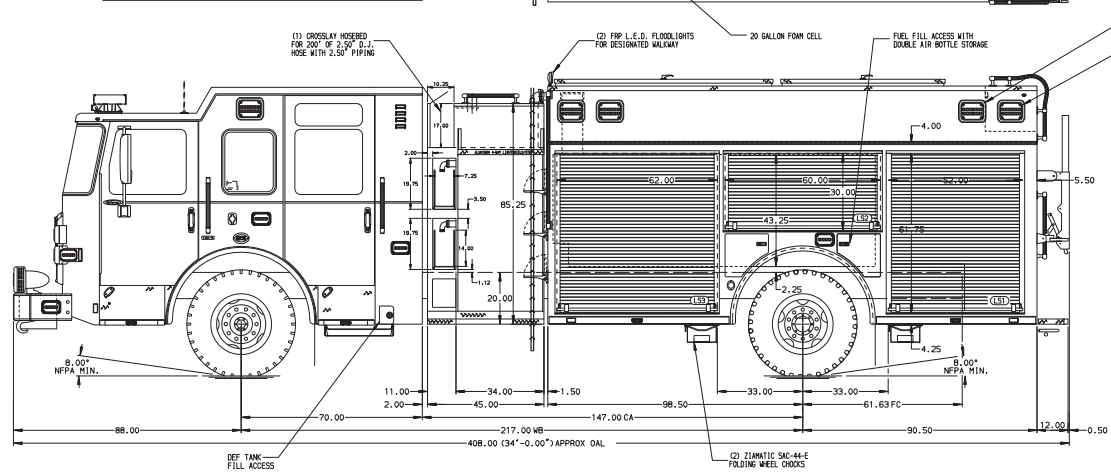
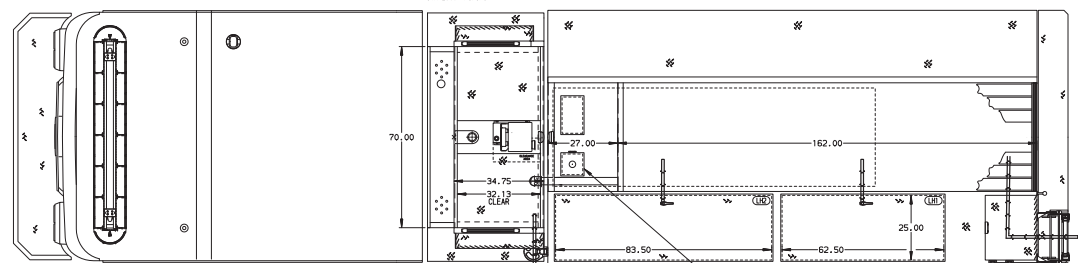
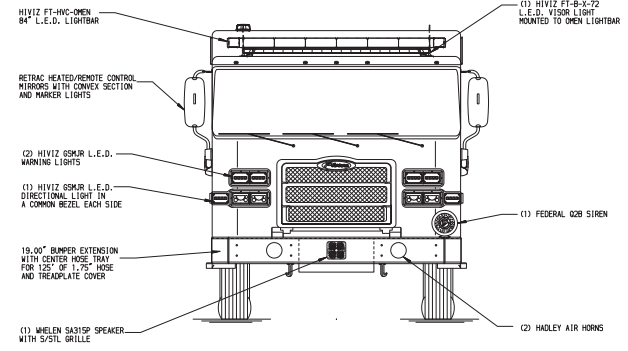
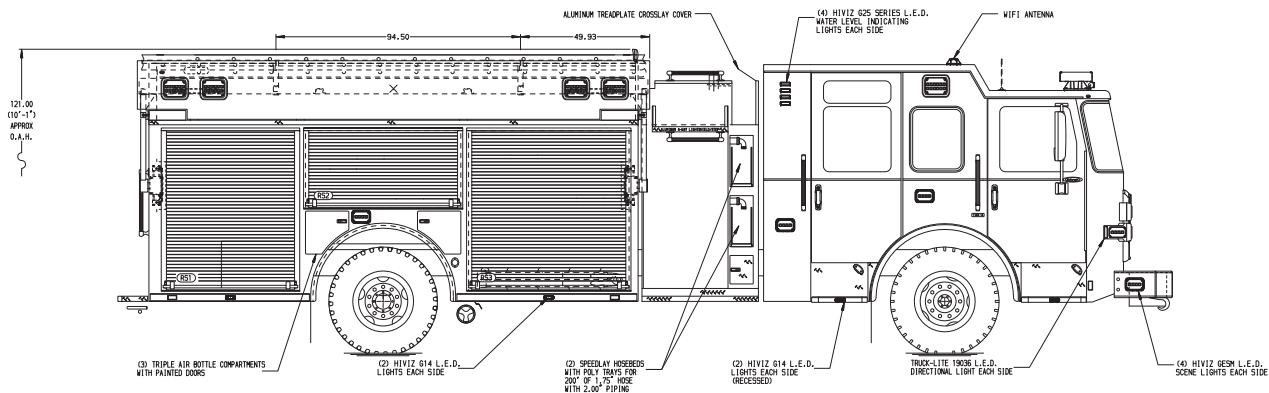


## Chassis

|                   |   |
|-------------------|---|
| Chassis           | 70" <b>Enforcer™</b> cab w/10" raised roof  |
| Seating Capacity  | 6   |
| Overall Height    | 10' 1"  |
| Overall Length    | 34'   |
| GVW Rating        | 53,800 lb   |
| Safety            | <b>Side Roll and Frontal Impact Protection</b>  |
| Front Axle        | <b>TAK-4® Independent Front Suspension</b> , 22,800 lb  |
| Rear Axle         | Dana S30-190, 31,000 lb   |
| Engine            | <b>PACCAR MX13</b> , 510 hp, 1850 lb-ft   |
| Electrical System | <b>Command Zone™ Advanced Electronics System</b><br><b>Collision Avoidance Mitigation System (CAMS)</b> |

## Body

|                  |   |
|------------------|---|
| Material         | Aluminum  |
| Compartmentation | 189" long body full height/full depth<br>w/full transverse        |
| Doors            | Rollup  |
| Pump             | Waterous, 1,500 gpm   |
| Tank             | 750 gallons   |
| Pump Panel       | <b>Pierce® Control Zone™</b><br>34" pump panel w/ speedlay module |
| Foam System      | <b>Husky™ 3 Foam System</b>                                       |
| Foam Cell        | 20 gallons  |



ALUMINUM BODY

SIDE ROLL AND FRONTAL IMPACT PROTECTION

NOTE  
 DIMENSIONS SHOWN ARE APPROXIMATE AND ARE SUBJECT TO MINOR DEVIATIONS AS MAY OCCUR OR BE NECESSARY IN CONSTRUCTION.  
 MINOR DETAILS NOT SHOWN.

- ONE 1.50" OUTLET WITH 2.00" PIPING AND SHIVEL LOCATED IN CENTER BUMPER TRAY
- SHOULDER RECEPTACLE WITH ORIGINAL SUPER AUTO-REST LOCATED ON DRIVER SIDE OF THE CAB
- AIR INLET WITH DISCONNECT COUPLING IN THE DRIVER SIDE STEPMPELL
- BATTERY CHARGE INDICATOR LOCATED ON THE DRIVER SIDE THROUGH WINDOW DISPLAY
- BATTERY CHARGE INDICATOR LOCATED ON THE DRIVER SIDE THROUGH WINDOW DISPLAY

| REV     | DATE | BY  | CHK | ENFORCER |
|---------|------|-----|-----|----------|
| 070C124 | JJB  | AST |     |          |
| 22JUL24 | JJB  | AST |     |          |
| 17JUL24 | JJB  | KLH |     |          |

| CHASSIS DATA | TITLE                                     | JOB NO.          |
|--------------|---|------------------|
| MAKE         | 1500 GPM, 770G TANK, 750G WATER, 20G FOAM | 43052            |
| PIERCE       | 189" HDRP, MUX                            | SCALE 1:24       |
| MODEL        | PIERCE FIELD UNIT                         | DATE 25JUN24     |
| CH           | APPLETON, WISCONSIN                       | DRAWN BY JJB     |
|              |   | CHECKED BY KLH   |
|              |   | DATE 26JUN24     |
|              |   | SHEET NO. D      |
|              |   | SHEET NO. 1 of 2 |

**Pierce MANUFACTURING INC.**

43052AD-SH1