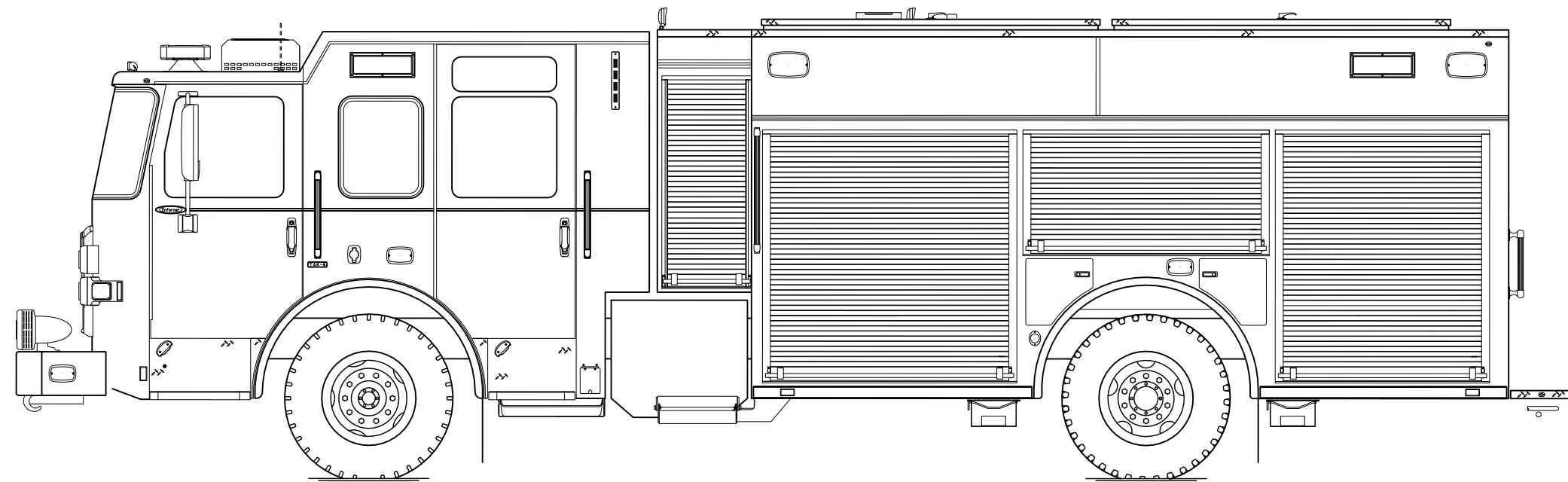




PERFORM. LIKE NO OTHER.™

Enforcer™ PUC™ Pumper



Chassis

Chassis	70" Enforcer cab w/10" raised roof
Seating Capacity	5
Overall Height	10' 1"
Overall Length	32' 4.5"
GVW Rating	46,500 lb
Front Axle	TAK-4® Independent Front Suspension , 19,500 lb
Rear Axle	Meritor RS26-185, 27,000 lb
Engine	PACCAR MX13 , 510 hp, 1850 lb-ft
Electrical System	Command Zone™ Advanced Electronics System

Body

Material	Aluminum
Compartmentation	189" long body full height/full depth
Doors	Rollup
Pump Tank	Pierce PUC™ , 2,000 gpm 750 gallons w/low hosebed approximately 69" from ground
Pump Panel	Pierce® Control Zone™ 31" fully enclosed pump panel
Foam System	Husky™ 3 Foam System
Foam Cell	20 gallons

D

C

B

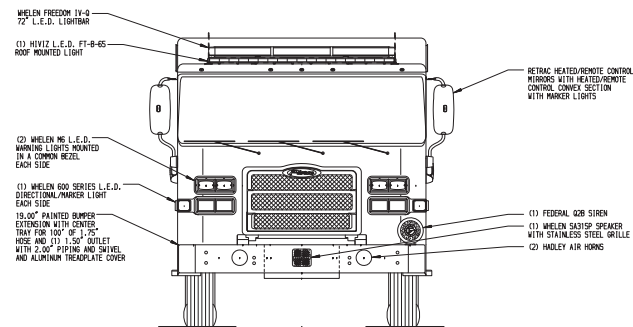
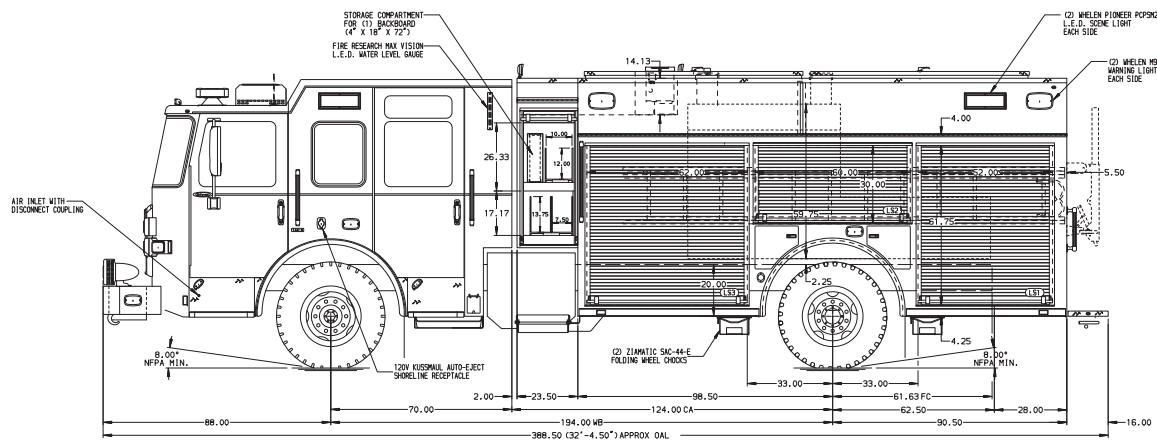
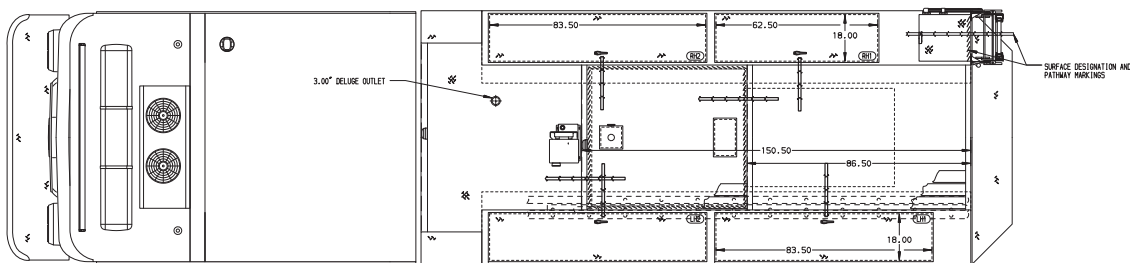
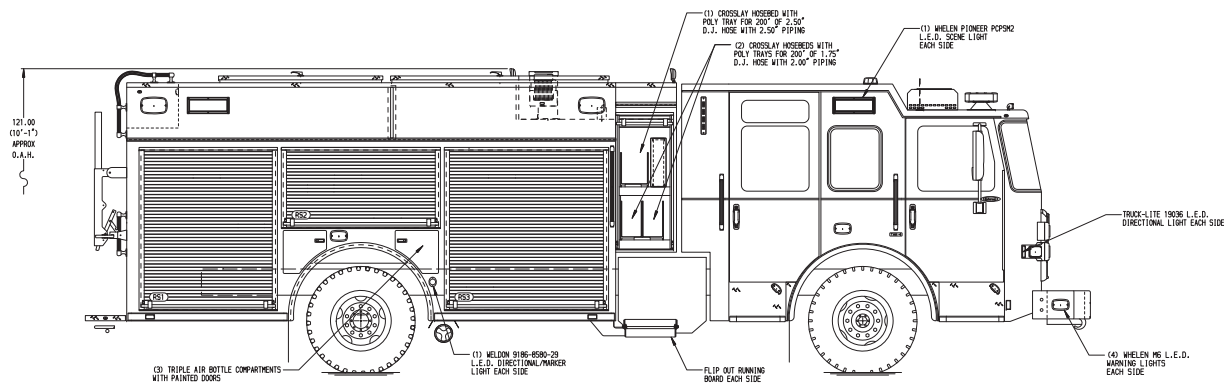
A

D

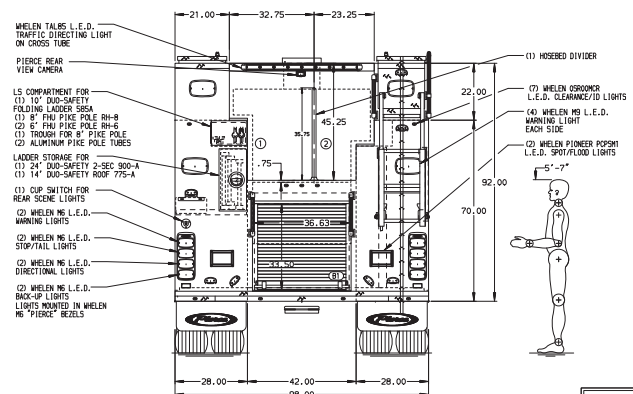
C

B

A



HOSEBED CAPACITIES
① 1000' OF 5.00" D.J. HOSE
② 600' OF 2.50" D.J. HOSE



ALUMINUM BODY

NOTE

DIMENSIONS SHOWN ARE APPROXIMATE AND ARE SUBJECT TO MINOR DEVIATIONS AS MAY OCCUR OR BE NECESSARY IN CONSTRUCTION. MINOR DETAILS NOT SHOWN.

1. BATTERY CHARGER LOCATED BEHIND THE DRIVER'S SEAT
2. BATTERY CHARGER INDICATOR LOCATED ON DRIVER'S SEAT RISER
3. 3/4" L.E.D. LIGHT STRIPS LOCATED ON HOSE BED
4. SIX FULL WIDTH/DEPTH ADJUSTABLE SHELVES LOCATED PER ORDER
5. TWO FLOOR MOUNTED SLIDE-OUT TRAYS WITH SIDE SLIDES LOCATED PER ORDER
6. TWO SLIDE-OUT ALUMINUM TOOL BAYS LOCATED PER ORDER
7. PARTITION BETWEEN L30/80 AND R30/80

CUSTOMER APPROVAL

APPROVED BY:

DATE:

REV	DATE	BY	CHK	ENFORCER
1	03/03/24	MMF	AST	CH



TITLE: 1500-D-750P, 189" PUC RESCUE
(3) CROSSLAYS, HUSKY 3, LADDERS THRU BODY
FOR PIERCE FIELD UNIT
APPLETON, WISCONSIN
DWG NO. 42733AD

NFPA 1900
(2024)
COMPLIANT

JOB NO.	42733
SCALE	1:24
DATE	30JUL24
DRAWN BY	MMF
CHECKED BY	AST
SHEET NO.	31JUL24
SHEET SIZE	D
SHEET NO.	1 of 1