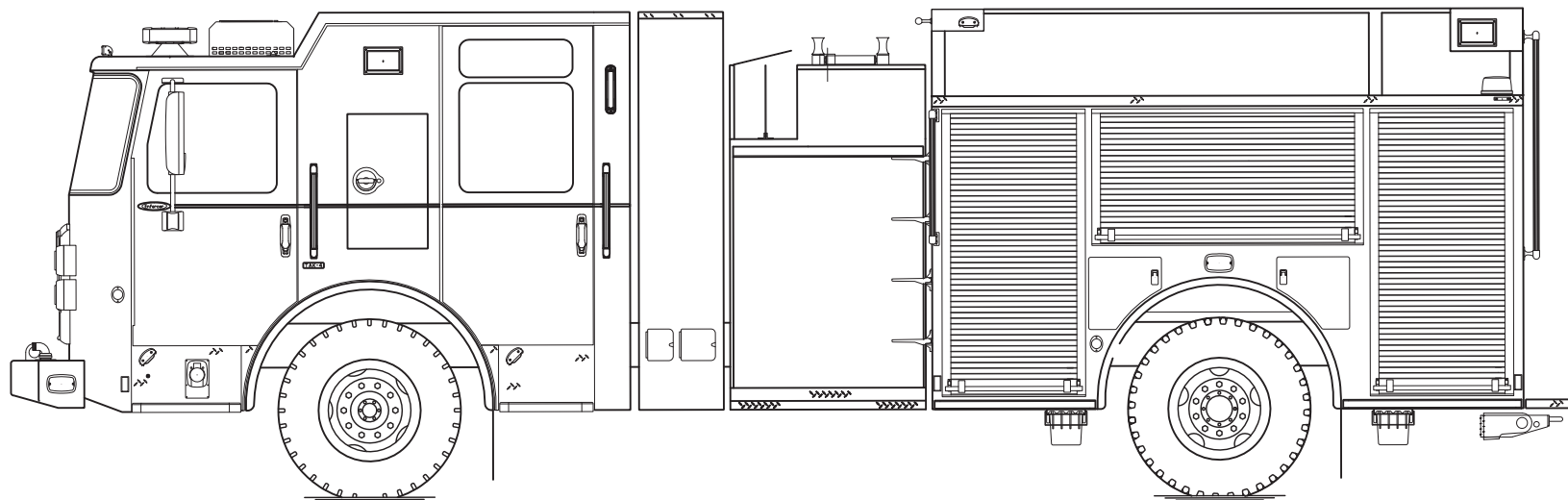




PERFORM. LIKE NO OTHER.™

Enforcer® Volterra™ Pumper

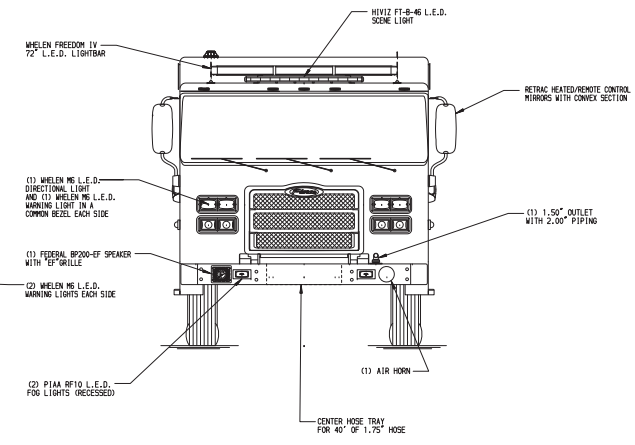
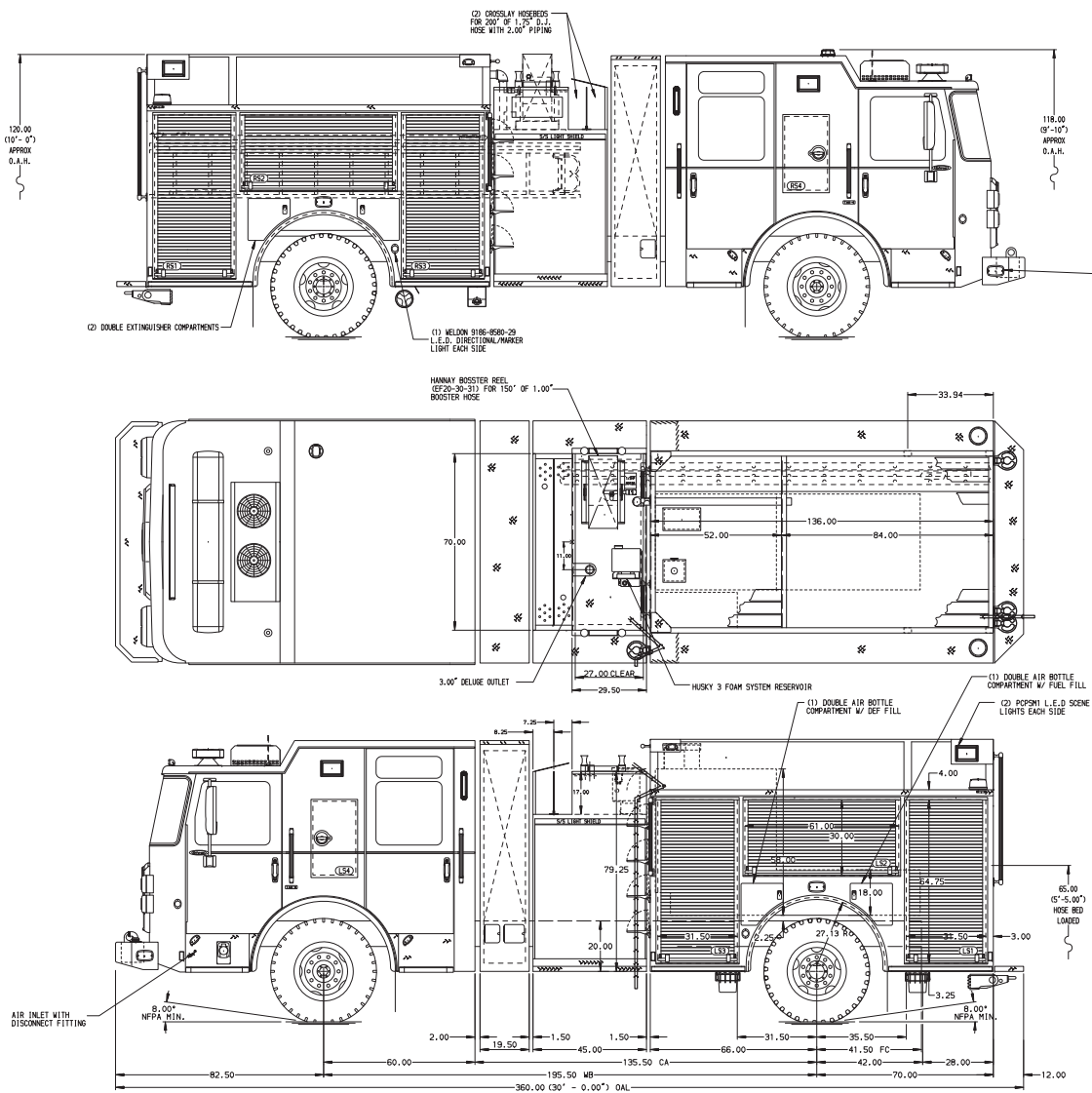


Chassis

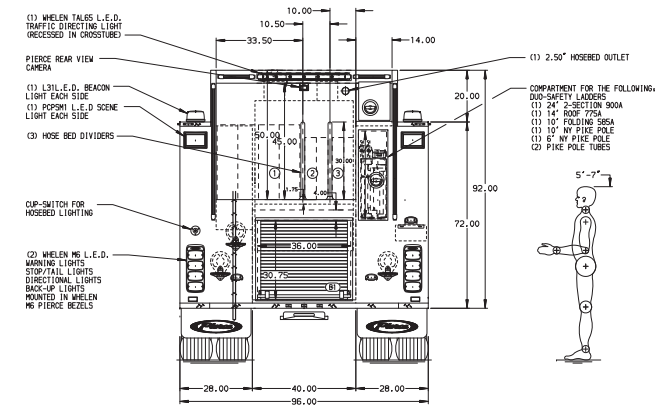
Chassis	60" Enforcer cab w/10" raised roof
Seating Capacity	4
Overall Height	10'
Overall Length	30'
GVW Rating	49,800 lb
Safety	Side Roll and Frontal Impact Protection
Front Axle	TAK-4® Independent Front Suspension , 22,800 lb
Rear Axle	Meritor RS25-160, 27,000 lb
Engine	Cummins B6.7, EPA 2024 Certified
Transmission	Oshkosh patented Electro-Mechanical Infinitely Variable Transmission (EMIVT) w/ integrated regenerative braking
Electrical System	Centralized integration of HV batteries and HV components Command Zone™ Advanced Electronics System

Body

Material	Aluminum
Shelving	Adjustable, up to 500 lb
Doors	Rollup
Pump	Waterous, 1,500 gpm Continuous, fully rated pump performance in electric mode, uninterrupted in backup ICE mode
Tank	500 gallons
Pump Panel	Pierce® Control Zone™ 45" pump panel
Foam System	Husky™ 3 Foam System
Foam Cell	20 gallons



- HOSERED CAPACITIES**
- ① 1000' OF 5.00" D.I.J. HOSE
 - ② 400' OF 2.50" D.I.J. HOSE
 - ③ 400' OF 2.50" D.I.J. HOSE



ALUMINUM BODY

SIDE ROLL AND FRONTAL PROTECTION

NOTE
DIMENSIONS SHOWN ARE APPROXIMATE AND ARE SUBJECT TO MINOR DEVIATIONS AS MAY OCCUR OR BE NECESSARY IN CONSTRUCTION. MINOR DETAILS NOT SHOWN.

1. SHOULDER RECEPTACLE WITH KUESMAIL SUPER AUTO-EJECT LOCATED ON DRIVER SIDE IN STEP WELL
2. AIR OUTLET WITH SHUT OFF VALVE ON THE DRIVER SIDE PUMP PANEL
3. BATTERY CHARGER LOCATED IN COMPARTMENT PER SHOP ORDER
4. EIGHT ADJUSTABLE SHELVE IN COMPARTMENTS PER SHOP ORDER
5. FOUR FLOOR MOUNTED SLIDE-OUT TRAY IN COMPARTMENT PER SHOP ORDER

CUSTOMER APPROVAL				JOB NO. 41724	
APPROVED BY:				SCALE 1:24	DATE
DATE:				DRAWN BY	
CHASSIS DATA				TITLE	1500-D-520P, 500 GAL WATER W/20 GAL FOAM, 136" BODY
MAKE				FOR	(2) XLAYS, LADDERS BUILT INTO BODY, HUSKY 3
PIERCE				PIERCE FIELD UNIT	CHECKED BY
MODEL				APPLETON, WISCONSIN	CDU
REV 24JUL24				DWG NO.	41724AD
BY				SHEET SIZE	D
AST				SHEET NO.	1 OF 1
CH					
ENFORCER					