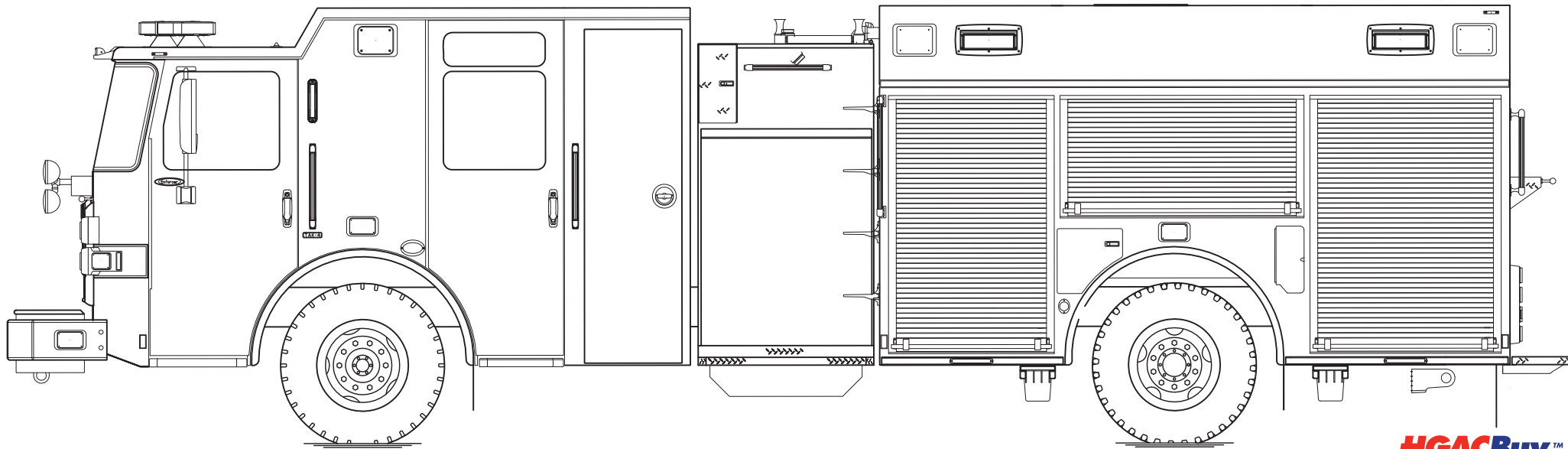




PERFORM. LIKE NO OTHER.™

Pelham Batesville Fire Department, SC

Enforcer™ Pumper



HGACBuy™
THE SMART PURCHASING SOLUTION

Chassis

Chassis	84" Enforcer cab w/10" raised roof
Seating Capacity	4
Overall Height	9' 11"
Overall Length	33' 5"
GVW Rating	46,500 lb
Safety	Side Roll and Frontal Impact Protection
Front Axle	TAK-4® Independent Front Suspension , 19,500 lb
Rear Axle	Meritor RS26-185, 27,000 lb
Engine	PACCAR MX13 , 510 hp, 1850 lb-ft

Body

Material	Aluminum
Compartmentation	161" long body full height
Doors	Rollup
Pump	Waterous, 1,500 gpm
Tank	750 gallons w/low hosebed approximately 71" from ground
Pump Panel	Pierce® Control Zone™ 45" pump panel

PUMPER BODY

Long Aluminum 2nd Gen Pumper
CHASSIS
 Enforcer Chassis

CHASSIS AXLE, FRONT, CUSTOM
 19,500 Lb TAK-4 Axle

AXLE, REAR
 27,000 Lb Meritor Axle

ENGINE
 510 HP Paccar MX13 Engine

TRANSMISSION
 Allison 6th Gen, 4000 EVS P

BUMPER
 22" Extended Painted Steel

CAB
 8410 Enforcer Cab

BODY TOTAL TANK CAPACITY
 750 Gallon New York Style Poly Tank

WATER CAPACITY
 750 Gallons of Water

FOAM CELL
 Foam Cell Not Required

COMPT, PUMPER, REAR
 30.75" FF RollUp Rear Compt

COMPT, PUMPER, LEFT SIDE
 161" RollUp Full Height Front & Rear FOLER

COMPT, PUMPER, RIGHT SIDE
 161" RollUp Full Height Front & Rear FOLER

FIRE SUPPRESSION PUMPHOUSE

45" Control Zone Side Mount

PUMP
 1500 GPM Waterous CSU

CROSSLAYS, 1.50"
 1.50" Crosslays Not Required

CROSSLAYS, 2.50"
 2.50" Crosslay Not Required

SPEEDLAYS
 Speedlays Not Required

GENERATOR
 Generator Not Required

FOAM SYSTEM
 Foam System Not Required

SAFETY

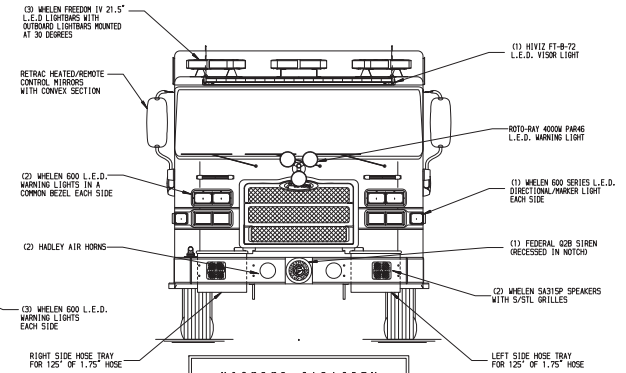
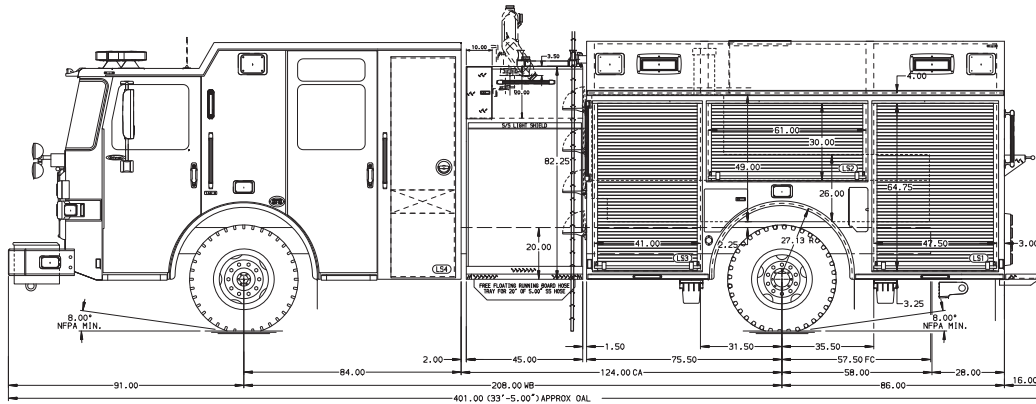
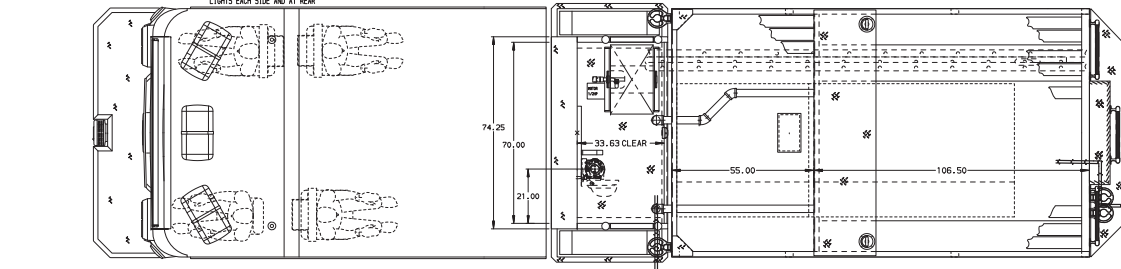
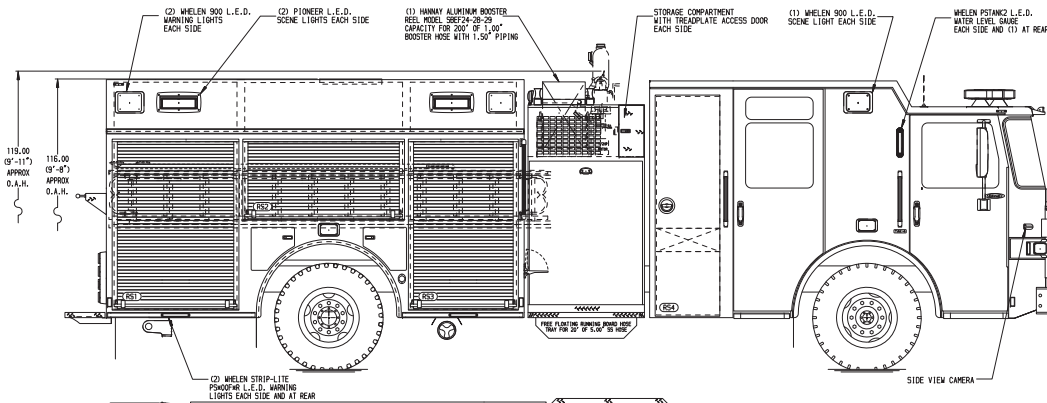
Side Roll and Frontal Impact Protection

NOTE

DIMENSIONS SHOWN ARE APPROXIMATE AND ARE SUBJECT TO MINOR DEVIATIONS AS MAY OCCUR OR BE NECESSARY IN CONSTRUCTION.
 MINOR DETAILS NOT SHOWN.

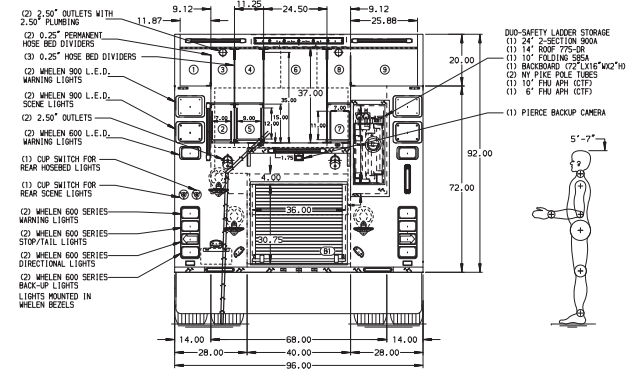
- ONE 1.50" OUTLET WITH 2.00" PIPING AND SKIVEL LOCATED ON TOP RIGHT BUMPER
- LOW SHROULDER RECEPTACLE (SAR) LOCATED IN US STEP WELL
- AIR INLET WITH DISCONNECT COUPLING ON THE US PUMP PANEL
- BATTERY CHARGER LOCATED PER ORDER
- BATTERY CHARGE INDICATOR LOCATED ON DRIVER SEAT RISER
- SEVEN ADJUSTABLE SHELVES LOCATED PER ORDER
- FOUR FLOOR MOUNTED SLIDE-OUT TRAYS LOCATED PER ORDER
- STOWABLE TIRE CHAINS
- ONE TRESH THREE DRAWER ASSEMBLY LOCATED PER ORDER
- ONE SWING-OUT TOOLBOX WITH NO HOLES LOCATED PER ORDER

11. ONE FLAT TOP SHELF LOCATED PER ORDER



HOSEBED CAPACITY

BED 1	150' OF 1.25" D.J. POLY HOSE
BED 2	200' OF 1.75" D.J. POLY HOSE (IN 84" L. TRAY)
BED 3	200' OF 2.50" D.J. POLY HOSE
BED 4	400' OF 3.00" D.J. POLY HOSE
BED 5	200' OF 2.50" D.J. POLY HOSE (IN FULL LENGTH TRAY)
BED 6	1100' OF 5.00" D.J. POLY HOSE
BED 7	200' OF 1.75" D.J. POLY HOSE (IN 84" L. TRAY)
BED 8	200' OF 2.50" D.J. POLY HOSE
BED 9	300' OF 3.00" D.J. POLY HOSE



Pierce MANUFACTURING INC.

JOB NO.	40659
SCALE	1:24
DATE	
DRAWN BY	JJB
CHECKED BY	MMF
JOB	25ARRP24
MODEL	25ARRP24
FOR	Pelham Batesville Fire Department
DWG NO.	40659AD
SHEET NO.	1 OF 1